

Trailer 6'x18', metal frame, wood floor, sides, electric lights, \$350. 610/353-1209.


Tri-axle 1983 Ford, 290 Cummins, many new parts, very good condition, \$25,000. 215-442-0680

Volvo truck parts, F613 F614. 717/354-3105.

WANTED: 7x14 enclosed trailer, tandem axle, must be in excellent condition. 717-938-3517.

1980 IH 24' Jerr-Dan Rollback, 3208 Cat, 5+2, 35,000 GVW \$10,500 717-438-3562

MOTORS New & Rebuilt 350, 366, 427, 454 6.2 Diesels Rebuilt & Used Will Install Roll Back Service, (at cost) 717-762-6415



15 Ft. Steel Dump Bed w/Heavy Duty Hoist w/grain sides \$2,300
717-733-3720

JONES

Goodwrench ENGINE HEADQUARTERS



GM GOODWRENCH 350 V8 1973-85 Part Number 10067353 New Engine - Not Rebuilt 36 Month or 50,000 Mile Warranty
\$1199⁰⁰
New Engine - No Core Fee

WE'LL MATCH ANY COMPETITOR'S PRICE!

6.5L GOODWRENCH DIESELS From \$3,100

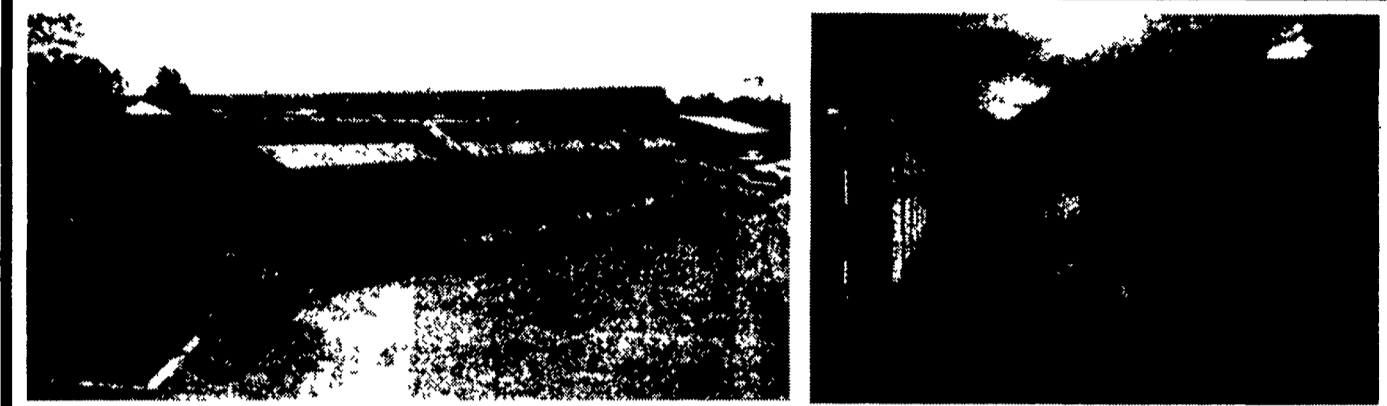
Call 394-0711 for prices on other New or Remanufactured Goodwrench Engines. 2.5 Liter thru 454 cid. Gas and Diesel

Chevrolet - Pontiac - Olds - Buick - Cadillac - GMC

JONES GM PARTS CENTER

1335 Manheim Pike, Lancaster, PA 17604
Easily Located on Rt. 72 Just off of Rts. 283 & 30
Hours: Mon-Fri 7:30 a.m. - 9 p.m. Sat 7:30-3
(717) 394-0711

GM PERFORMANCE PARTS



2 - 60' Modular Offices

Could be used for office space or Hunting Camp.
Restroom, phone and electric Set up.
Available Sept/October

\$9,000 for both or \$4,700 each

CALL THE JONES GMC TRUCK DEPT FOR DETAILS 717-394-0711

JONES BEST BUY 4X4'S TRUCKS

JONES

PONTIAC • HONDA GMC TRUCK

1335 Manheim Pike, Lancaster

717-394-0711

Largest Stocking & Selling Extended Cab GMC Dealer in 7 States

Prices based on straight sale, Tax & Tags extra. Trades accepted at actual cash value. Must present this ad at time of purchase for sale price.

 <p>'93 CHEV ASTRO ALL WHEEL DRIVE AT, AC, V6, 8 Pass. #7345 Was \$13,300 SALE \$10,845</p>	 <p>'87 GMC SUBURBAN SLE, AT, AC, V8, Clean #7390 Was \$8,700 SALE \$6,430</p>	 <p>'89 MITSUBISHI 4x4 5 Spd., 4 Cyl., Clean #7354 Was \$6,900 SALE \$5,150</p>	 <p>'95 CHEV 3/4 X CAB 4x4 5 Spd., Silverado, 350, AC, 8600 GVW Was \$23,100 SALE \$21,230</p>	 <p>NEW '97 GMC K25 X CAB 4x4 AT, SLE, 6.5 Turbo, 6' Bed #17627 Was \$31,482 SALE \$29,227</p>
 <p>95 GMC K15 4x4 AT, AC, SLE, 4.3 Vortec #7339 Was \$19,735 SALE \$17,183</p>	 <p>'93 DODGE GRAND CARAVAN LE AT, AC, V6, 7 Pass #7371 Was \$13,400 SALE \$10,700</p>	 <p>'91 CHEV K15 4x4 Sportside, AT, AC, V8, Silverado #7368 Was \$13,900 SALE \$11,700</p>	 <p>'95 CHEV BEAUVILLE VAN AT, AC, 6.5 Turbo #7364 Was \$19,931 SALE \$18,100</p>	 <p>NEW '97 GMC K30 4x4 DUMP AT, 6.5 Turbo, 8' Body #17517 Was \$33,191 SALE \$29,171</p>
 <p>'93 CHEV CONVERSION VAN AT, AC, V8, TV, VCP, 41,000 Miles #7362 Was \$18,700 SALE \$14,780</p>	 <p>'94 GMC SUBURBAN 4x4 AT, AC, V8, SLE #7366 Was \$19,700 SALE \$17,850</p>	 <p>'92 GMC SUBURBAN 4x4 AT, AC, V8, SLE #7360 Was \$17,480 SALE \$15,900</p>	 <p>'93 CHEV CONVERSION VAN Hitop, AT, AC, V8, TV #7362 Was \$18,900 SALE \$16,300</p>	 <p>'88 CHEV K15 4x4 V8, AT, AC, Silverado #7369 Was \$11,700 SALE \$9,480</p>
 <p>'86 CHEV K15 4x4 Snow Plow, V8, AT, AC, Silverado, 58,000 Miles #7383 Was \$9,700 SALE \$7,800</p>	 <p>'95 GMC SUBURBAN 4x4 AT, AC, V8, SLE #7382 Was \$28,700 SALE \$25,300</p>	 <p>'94 GMC SAFARI SLT AWD AC, V6, AT, Loaded #7363 Was \$15,489 SALE \$13,500</p>	 <p>'91 JEEP GRAND WAGONEER 4x4 AT, AC, V8, Loaded #7225 Was \$11,200 SALE \$8,400</p>	 <p>'95 CHEVY K15 4x4 AT, AC, V8, Silverado, 24,000 Miles #7330 Was \$19,730 SALE \$18,728</p>

Prices based on straight sales, Tax & Tags extra. Trades accepted at actual cash value. Must present this ad at time of purchase for sale price.