

1977 RD-600 Mack 6 wheeler dump truck, 6 cylinder, diesel, 5 speed trans, air brakes, 10' snow plow and tailgate sander, DOT inspected, minor rust, \$5,900. Naudain Enterprises, (302)239-6840.

1975 Int cattle truck in poor condition or for parts, good motor, \$300. (717)536-3597.

1976 IH Cargostar-A 18' flatbed, needs fuel line work, engine turns, good rubber, make offer. 717/374-7623.

1985 Mack tractor, R model, 350 hp, E-6 engine, 10 speed trans, Mack pedigree engine, 11 months old, lost contract, must sell! 610-562-7801 leave message.

1985 Western Star, new rebuilt 400hp CAT engine w/only 25,000 miles, good condition. 717-892-1556

LEFEVER BROS. CHEVROLET CHEVY TRUCKS GEO.

YOUR DIRECT LINE TO GENUINE GM PARTS

(800) 533-3837

When you call the number listed above, you'll reach our wholesale parts specialists, who can help you keep your GM repair work moving quickly.

Ask about:

- Specializing in GM Medium Duty Trucks, Current and Obsolete.
- \$500,000 Parts Inventory.
- Parts Locator for Those Hard to Find Items.
- We Ship Anywhere, Local Delivery Available.
- Experienced, Knowledgeable Personnel.

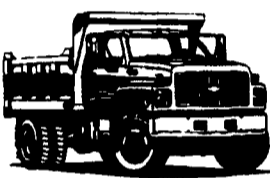
Mon., Tues., Thurs., Fri.
7:30 a.m.-4:30 p.m.

Weds. 7:30 a.m.-8:30 p.m.
Major Credit Cards Accepted

(717) 432-9697

Quality Dealer Since 1921
406 U.S. Rt. 15, Dillsburg, PA 17019

GM Goodwrench Service



Kodiak Chevy Trucks CAT DIESEL POWER



1993 Ford Aerostar Van XLT
All Wheel Drive, 18,000 Miles, Loaded
\$15,900

Wineland Equipment
Martinsburg Pa
814/793-2109



Pumper - Septic or manure. Mack Diesel, 5-speed, 2250 gal., Vac/Press. pump. Land Application Systems.
6 a.m. - 5 p.m.

610-269-3494

KEYSTONE PETERBILT

1467 Manheim Pike • Lancaster, PA 17604
717 299-6630 • 800 243-2458



90 White/Volvo, W1A42T, 560 Detroit 400 HP, RTX 14609B Trans, Single Axle 4.11 Rear, Air Ride Susp.



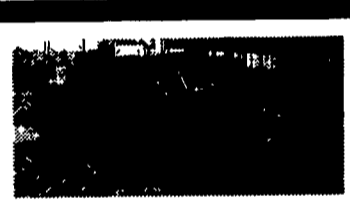
1989, 1990 & 1992 Peterbilt 378's with Matched Specs; 3406B CAT; 350; Jake Brake; 9 Spd. Fuller; 4:11 Ratio; 215" WB; PB; Air Ride Susp.; 12K FA; 40K RA; 11R22.5 Lo-Pro Rubber (Virgin, All Have 36" Slprs.)



1989 Peterbilt Conv. 377-63" Low; 3406-425 HP RTX 15715 Trans; DS 402-4.11 R. Axle; Air Susp.

USED TRUCK INVENTORY

YEAR	MAKE	MODEL	ENGINE	TRANS.	R AXLE	SUSP
1990	F-liner	FLA10464T	3406-310	9-spd	SQ-100-3 55 Air Ride	
1988	Peterbilt	378-119-36" SBFA	3406B PEEC 350	RTO 14609B	DS402-4 11	Low Air
1986	Kenworth	T-600 42" sleeper	NTC400	9-spd OD	40,000	KW air



95 FORD F350 CREW CAB DUALY
Power Stroke Diesel, Centurion Conversion Pkg, 5-Spd., Loaded, 25,000 Miles, Forest Green w/Gold Striping



95 FORD F350 CONTRACTORS DUMP
460 EFI, 5-Spd., AM/FM, PS, PB, only 21,000 Miles, Red. #F615



95 FORD F250 XL
4x4, Power Stroke Diesel, AT, A/C, PS, PB, 41,000 Miles, 8,600 GVW, White/Blue Int. #F626



93 DODGE RAM 350 12 FT. STAKE BODY
Cummins Turbo Diesel, 5 Spd., PS, PB, 59,000 Miles, 11,000 GVW #D162



88 FORD F350 12 FT. STAKE BODY DUMP
351 V8, AT, PS, PB, AM/FM, 51,000 Miles, Steel Floor #F621



90 DODGE RAM 350 - HI-TOP UTILITY BODY
Dual Wheel, 4x4 AT, 360 V8, PS, PB, 87,000 Miles, Good Heavy Work Truck #D202

OVER 120 TRUCKS
Preferred Warranties Available on Most Trucks

Bobby Gerhart's Truck Warehouse



95 DODGE RAM 2500 4x4, Cummins Turbo Diesel, AT, A/C, SLT Laramie, 37,000 Miles, White/Grey Int. #D201



95 GMC 3500 EXTENDED CAB
Dually 4x4, Blue & Silver, Auto, A/C, SLE Loaded, 10,000 GVW, 39,000 mi 6.5 Turbo #G175



94 DODGE RAM 3500 DUALY, 4x4
Laramie SLT, Cummins Turbo Diesel, AT, A/C, PW, PL, 38,000 Miles. #D183



94 DODGE RAM 3500 4x4 w/L-PAK DUMP
360 V8, AT, Tool Boxes, Only 36,000 Miles, White #D198



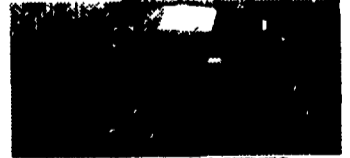
90 FORD F350 CREW CAB
4x4, 460 EFI w/Auto OD, AT, A/C, Dual Tanks, Alum Wheels, 80,000 Miles, Maroon #F619



94 GMC SUBURBAN 2500, 4x4
6.5 Turbo Diesel, AT, Dual Air, Loaded, White, Leather Interior, 48,000 Miles, Barn Doors #G179



96 FORD F250 XLT SUPERCAB 4x4
Power Stroke Diesel, AT, A/C, PW, PL, Only 22,000 Miles, Black & Silver, Like New #F632



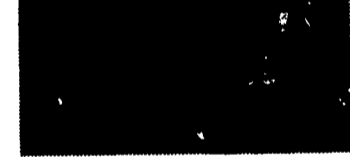
91 CHEVY 3500 SERIES
Ext Cab Dually w/Western Hauler Pkg., AT, 454 V8, A/C, PW, PL, 44,000 Miles, Ready to Pull Your Trailer, Blue



96 CHEVY K2500 EXTENDED CAB
4x4 w/6.5 turbo diesel, Auto, A/C, Silverado package, only 16,000 mi. black & gold. #C403



94 FORD E350 XL SUPER CLUB VAN
15 Passenger, 7.3L Diesel, AT, Dual Heat/Air, PS, PB, Blue/Blue Int., 36,000 Miles, #F624



95 DODGE RAM 2500 4x4
AT, A/C, V10, 69,000 Miles, AM/FM Stereo, Red w/Charcoal Interior, 8600 GVW #D203



93 CHEV K3500 4x4 DUMP TRUCK
350 V8, 5-Spd., 70,000 Miles, PS, PB, Rare Find, Ready To Work, Red



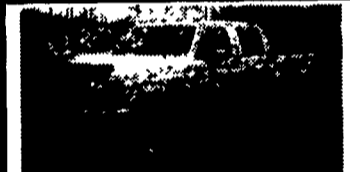
89 CHEV K3500 4x4 CREW CAB DUALY
AT, 454 V8, A/C, PW, PL, High Miles, But Looks & Runs Good, 2-Tone Charcoal & Red



92 CHEV K2500 H.D. 4x4, SILVERADO
6.5L Turbo-Diesel, Power Angle Plow, AT, PW, PL, A/C, 2-tone Blue & Silver #C411



92 DODGE CLUB CAB 3500 DUALY
Cummins Turbo Diesel, AT w/Auto OD, LE Pkg., A/C, High Miles but Looks & Runs Good #D200.



96 FORD F250 CREW CAB 4x4
Power Stroke Diesel, XLT, Loaded, AT, A/C, Short Bed, 11,000 Miles, White #F627



95 CHEV K3500 EXT. CAB 4x4 DUALY
6.5 Turbo Diesel, Silverado Pkg., Loaded, Teal, 28,000 miles #C407



95 FORD F250 4x4 SUPER CAB XLT LARIAT
Power Stroke Diesel, 5-spd., A/C, Loaded, 56,000 Miles



95 GMC YUKON 4x4
6.5 Turbo Diesel, AT, A/C, SLE Pkg., Loaded, Alum. Wheels, Only 27,000 Miles, Black, Absolutely Beautiful #G178



88 FORD F350 CREW CAB DUALY
7.3L Turbo Diesel, XLT Lariat Pkg., 5-Spd., 2-Spd. Rear, A/C, Loaded, Trailer Tow Pkgs., 5th Wheel, F630 High Miles but ready to work.



88 INTERNATIONAL PALLET CRANE STAKE BODY
DT 466 Fresh Rebuilt, 6-Spd., PS, PB, Ex. Cond., Under CDL GVW #110