

1990 450 Super Duty 7.3 diesel, automatic, 10' flatbed stake body, gooseneck and pintle hitch, break control, running boards, good tires, good condition, \$10,000. (717)477-5215.

1989 Ford F450 Super Duty, 460 FI, 5-spd manual, w/9' utility body, needs clutch, \$4500 OBO. Montgomery Co., PA 610/584-0494.

(3) Aluminum tankers, 9000+ gallon capacity, 4x5 compartments. Ideal for storage, water or manure hauling, \$3000 OBO. Franklin Co. 717-263-6231

(2) Aluminum dump Body-ier, (1)-16', (1)-17' high sides, \$3500/ea. Reefer box 20' diesel unit, good condition, \$2000. 610-944-9871 after 6PM.

1987 Ford LTL 9000 tractor w/42" sleeper, air ride suspension, 400 CAT engine, 13 spd trans, must see to appreciate. Call Bill Martz or Joe Sheetz. (717)755-2911

Lancaster Farming, Saturday, June 14, 1997-D29

1988 F-350 Turbo diesel dually, crew cab and chassis, XLT Lariat, loaded, fresh red paint, \$10,500. (717)684-0090 leave message.

1979 White w/20' dump grain body, tandem axle, power steering, A/C, 300 Mack, \$12,500 OBO. (215)794-8457.

1985 Ford F-350 flatbed dump, 2WD, 4spd w/6.9 diesel engine, good cond. Call Bill Martz or Joe Sheetz. (717)755-2911

1985 GMC step van, chest cooler freezer, great for market route, roadside stand, 150,000 miles, good condition, \$3495 OBO. 610/845-7826.

1988 Timple 46' refrigerated trailer, Thermoking w/cycle sentry, swing doors, sliding tandem, \$3,995. (717)560-4901.

1989 16' R&S steel dump body, good condition, \$2500 OBO. 717-359-9423 after 6pm.

LESHER Mack SALES & SERVICE

27th & Cumberland St. Lebanon, Pa 17042
Route 422 West



(M) (1) 1993 Mack CH 613 E7-350 V-Mac, RTX 14709H, 12 Ft., 38 Rear, Air Ride, 4:11 Ratio, 192" WB, St-Disc Wheels, 42" Sleeper



1990 Mack R Model E6-350, 4VH, Out Of Frame Overhaul At 397,698, Trans: Fuller RTF 11609A 9-Speed, Rears: Mack Camel Back, 36,000 Lbs., 3.65 Ratio; 200" Wheelbase, 36" Sleeper Box w/Air Ride, Sliding 5th Wheel, 11-R-22.5 Alum. Budd Steering, 11-R-22.5 Spoke Drive Axles, 556,500 Miles.

717-273-4535

Highspire Auto & Truck Repair Corp.

575 South Front Street, Steelton, PA
Near I-81/I-83 and PA Turnpike (Harrisburg, PA)
717-939-9527 HOUSE ACCOUNTS WELCOME
1-800-564-6869

\$\$\$ SPECIALS \$\$\$
PA. STATE INSPECTION \$5.00 OFF
With This Ad
Expires June 30, 1997

Federal D.O.T. Inspection
PA State Inspection Station
Local and Long Distance Towing

- Complete Truck & Trailer Repair
- Collision Repair & Frame Straightening
- Lower Labor Rate than Dealers
- Spring & Suspension Repair
- Fully Stocked Portable Shop for On-Site Repairs
- 24 Hour - 7 Day Road Service
- Accident Recovery
- Welding (Steel & Aluminum)
- Gas & Diesel Repairs
- Free Estimates

QUALITY SERVICE AT REASONABLE PRICES SINCE 1975

BICYCLE CARRIERS
SAVE \$5
FREE UPS
1-800-884-8873
1-800-882-8873

TRUCKS

The Best Selection of New & Used Trucks is At Pennsylvania's Leading Truck Source

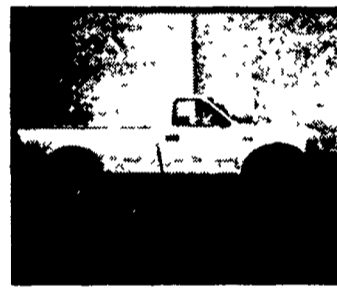
NEW HOLLAND FORD



1997 FORD F250 4X4

V8 Engine, 5 Speed Transmission, Four Wheel Drive, Power Steering, Power Brakes, Air Conditioning, AM/FM Stereo, 8500 GVW with HD Front; Suspension #F7339

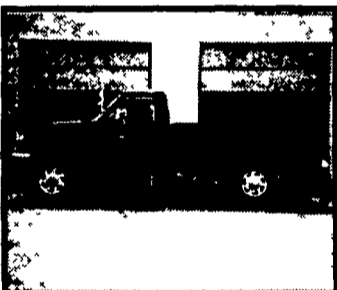
\$19,997



1997 FORD F150 4X4

V6 Engine, 5 speed Transmission, Four Wheel Drive, Air Conditioning, AM/FM Stereo/Cassette, Chrome Bumpers, Styled Wheels #F7778

\$17,993



1997 FORD F350 4x4

7.5 V-8, Great Plow or Work Truck, Automatic Transmission, Four Wheel Drive, Power Steering, Power Brakes, Air Conditioning, AM/FM Stereo/Cassette #F7347

\$22,983



1974 FORD F-600 12' STAKE BODY DUMP

w/Grain Chute! V8, 4 spd, 19200 GVW, Runs strong, Great Farm Truck! Only

\$3,450



1988 ISUZU NPR TURBO DIESEL

w/14' Morgan Van Body! PS, PB, Low Miles! Super Work Vehicle, Super Economy, Hurry Only

\$10,998

WHITMOYER

FORD • MERCURY

YOUR FARM & PERSONAL TRUCK HEADQUARTERS

1995 CHEVY S BLAZER
Red, Full Power
\$17,900



1996 Ford F150 4x4
Automatic, 5,000 Miles, Just Arrived



1993 FORD CLUB WAGON
Lt. Blue
\$17,900



1996 FORD F150
Green/Silver PW, PL, AC, 21,000 miles
\$21,900



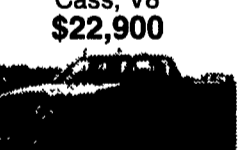
1997 Ford F150 4x4 AC, Red, One Owner
\$17,900



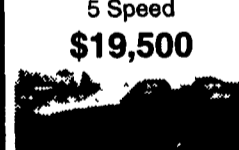
1986 CHEVY BLAZER 4x4
Dk. Blue, AC, Cass
\$5,900



1997 Ford F150 Super Cab
4x4, Green, AT, AC, Cass, V8
\$22,900



1996 Dodge Ram 2500
3/4 Ton 4x4 V-8, AC, 5 Speed
\$19,500



1994 Olds Bravada
White, Tan Leather, loaded w/equipment, top of the line sport utility
\$17,900



1994 Mercury Villager Dk Green,
44,000 miles, V6, AT, AC, PW, PL, Nice One Owner
\$14,900



1994 FORD EXPLORER
Green, XLT, PW, PL, Cass.
\$18,900



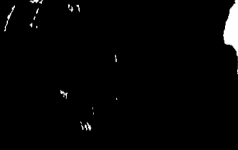
1988 Ford Taurus
Dk Brown, LX, PW, PL, Cass, CC
\$4,900



1986 Dodge 600
White, AT, AC
\$1,900



1991 Ford Bronco Eddie Bauer, Red, PW, PL, AT AC, CASS
\$9,900



1995 Ford Bronco Eddie Bauer, Dk. Green, lots of equipment, 31,000 miles
\$21,900



1994 Nissan X-Cab
4x4, Burg, AC, 5 Spd
\$13,900



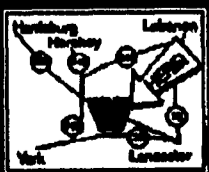
CUSTOMER SATISFACTION WORTH DRIVING FOR



Whitmoyer
FORD • MERCURY

Rt. 283 & 3rd Avenue, Town East, Elizabethtown
Sales Hr. M-F 8:30 am - 9 pm, SAT 9 am - 5 pm

717-367-7022 or 1-800-267-2088



New Holland

FORD & ISUZU TRUCKS

Route 23, New Holland PA

717-354-4901 • 800-642-8605