

'92 Chevy Cheyenne 1500 WT, 1/2 ton, 4.3 V6, auto, PS, PB, AM-FM, 64,000 one owner miles, new radials, red, excellent condition, \$8,300. 717-733-2873

'92 Chevy Scottsdale HD 2500, 6.5 turbo diesel, auto, PS, PB, air, AM-FM, towing package, 8,600 GVW, new radials, 60,000 one owner miles, excellent condition, \$12,500. 717-733-2873

'91 Ford XLT E150 club wagon, 7 passenger, 302 EFI, auto, PS, PB, PW, PDL, cruise, tilt, dual air, AM-FM cassette, 2 tone blue, privacy glass, new radials, one owner, excellent condition, \$8,900. 717-733-2873

'92 Ford F150, A/C, 6 cylinder, 5 speed, aluminum tool box. Asking \$6,850. (610)347-0688.

**ENGINES FOR SALE:**  
Mack 285 237  
Cat 3208 & DT 466 Int.  
DETROIT: 6V53 318, 8V92; V671 & 671.  
Gas Engine: Ford 391; 361; Chevy 366; 427; 350.  
Many other parts at reasonable prices.  
**HAP'S TRUCKS & PARTS**  
1-800-839-3338

Engine for sale: Chevy 6.2, very low miles. 3208 Cat, very low miles. Also other engines & parts.  
610-944-9871 after 6pm

93 F150 Pickup, super cab, 4-spd, 6-cyl., 7' bed, runs good. \$8,500. 610/353-1209.

Carrier Eagle Plus trailer units, avg. condition, Kubota powered, working units, \$2750 OBO. 717/538-2324.

Ford B700, 1975, 23,000 GVW, 391, V8, Allison, air brakes, 45,000 miles, new tires, \$1450. 609-799-7008


1990 Chevy 4x4, 350, auto, 8600 GVW, 127,000 miles, \$5995. 717-273-6105

For Sale: 1977 Int. 1800 Loadstar, Midwest dump, 345 gas, new paint, new tires, new insp. 610/562-8940 leave message.

Frehauf dump trailer, 24' aluminum, good condition, \$2500. 215-442-0680

Late 1970 Mercedes 16' stake body w/dump and straps for round bales. 610-469-9633

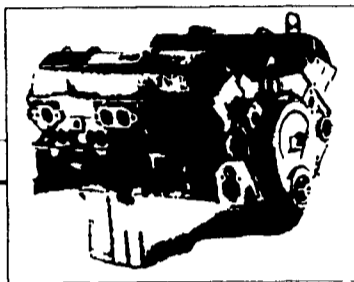
**MACK PARTS FOR SALE:**  
Engines, blocks, heads & cranks, cabs, hoods & doors, trans, rears,  
**ALL MACK PARTS**  
**REASONABLE PRICES**  
**MACK TRUCKS BOUGHT**  
(complete or parts)  
888-625-6485.



**1985 Ford F350**  
7.3 Turbo Diesel, 5-Spd. with US Gear  
Auxiliary, 84" Cab to Axle, Good  
Condition \$4,495  
**1988 Chevrolet K30, 4x4,**  
6.2 Turbo Diesel, Automatic, 84" Cab  
to Axle, Good Condition \$8,495  
(717) 361-9296

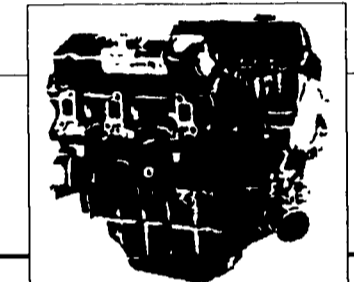
Join The Goodwrench Power Team!

# WHY BUY REBUILT? CHECK OUR PRICES ON GM/GOODWRENCH BRAND NEW ENGINES!



350 LD <sup>NEW</sup>  
ONLY \$1195

Call for pricing on 350 MD



4.3L V6 Remanufactured  
1985-1991  
ONLY \$1585

2.8L V6 <sup>NEW</sup>  
ONLY \$1495

Many others priced comparatively low

Covered by General Motors 3 Year/50,000 Mile Warranty

<b>COMPLETE GM CAR &amp; TRUCK PARTS DEPARTMENT</b> We Ship Anywhere!	<b>SAME DAY DELIVERY</b> on many GM & A/C Delco parts	<i>Free</i> <b>PARTS LOCATER SYSTEM</b> for hard-to-find parts	<b>MOTOR HOME &amp; RV PARTS</b> available for all models
--	---	---	---

## DAN PHELPS



100 S. Museum Road,  
Shillington, PA 19607



**Goodwrench  
Service**

610-777-1300 or 800-397-4041  
SERVICE DEPT'S. HOURS: MON. - FRI. 8 AM - 5 PM

## F.M.I NOW DOES TRUCK WORK!

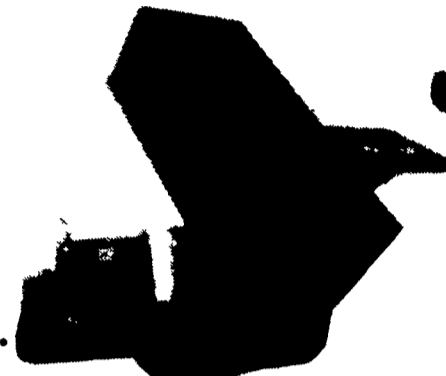
- Truck Bodies Mounted
- Frame Work Done
- Axle Moved
- Hydraulic Systems Installed and Serviced
- Custom Fabrication and Welding

717-626-2680 F.M.I.

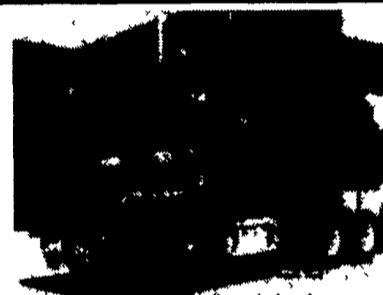
**Feedmobile Inc.** SALES • PARTS • SERVICE

For Over 30 Years

727 Furnace Hills Pike, Lititz, PA 17543



1990 Freightliner 350 HP CAT,  
9 spd. trans. with air ride  
\$15,000.00



(2) 1987 Freightliners 350 HP  
CAT, 9 spd. trans. with air ride  
\$15,000.00/EA.



1947 Auto Car  
gas engine  
\$750.00



1975 N. Reading Road  
Denver, PA 17517

(800) 422-8384

Ask for Ken Martin  
or Jim Zimmerman

### LOAD BOSS TRAILERS



Heavy Duty Highway  
Dumps, All Sizes,  
Quality Workmanship,  
Free Wireless Remote  
Control



\* NEW \* Roll-Off  
Container Trailers,  
Great For Small  
Refuse, Recycling,  
Builders, Construction  
Work, Etc.



Many different sizes  
Built To Suit Your  
Working Needs

Buy From The  
Factory And  
Save \$  
814-623-8696  
OR  
814-623-8696

## EBY USED EQUIPMENT

### BODIES

- (3) 10' Eby Cattle Bodies
- (1) 12' Eby Cattle Bodies
- (1) 14' Eby Cattle Body
- (1) 16' Wooden Cattle Body

### GOOSENECK

- 1992 Kiefer 16'x6'x7'3" 2  
Horse GN
- 1983 Big B Alum 18'x8'x7'
- 1978 Eby 22'x8'x6'6"
- 1988 Barrett 26' x 8' x 7'  
w/4' Tack Room
- 1988 Featherlite  
22'x8'x6'6"
- 1988 Featherlite  
20'x7'x6'6"

### BUMPER HITCH

1995 Featherlite Aluminum  
Stock Trailer

### M.H. Eby, Inc.

1194 Main Street (Route 23)  
Blue Ball, PA 17506  
(717) 354-4971 (800) 292-4752  
FAX: (717) 355-2114  
4435 State Route 29  
West Jefferson, OH 43162  
(614) 879-6901 (800) 752-0507  
FAX: (614) 879-6904

## IN ALUMINUM BODIES EBY BUILDS IT

M H Eby custom-builds aluminum truck bodies for the agri-transportation market Nobody offers more sizes and options in:

- FLATBED BODIES - Lengths to 32', choice of 5 widths
- GRAIN BODIES - Lengths to 24', landscape and general purpose dumps to 12'
- LANDSCAPE BODIES - Lengths to 12', We'll build to your specs!

For greater payload capacity, Eby's aluminum design is equal in strength to steel and up to 40% lighter. Our corrosion-resistant components never need painting. That means minimum maintenance, improved appearance and higher resale value

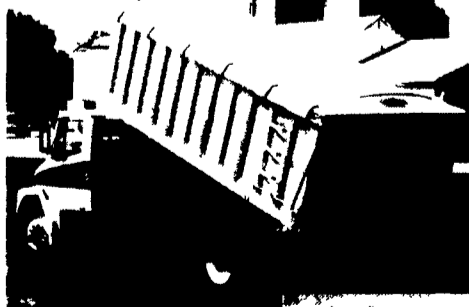
Eby products have superior standard features And we offer customer options for virtually any application Agriculture is your business - building bodies to haul it is ours.



1194 Main Street  
Blue Ball, PA 17506



Let EBY  
custom build  
one for you.



800-292-4752