

1989 IH F2575, 260K Mi, 12 F, 38R, 9 speed, 350 Cummins, Jake, Wetline, Good Condition
\$15,500 • (717) 382-4881



1987 Ford F-700 C+C
 370-2V engine, 72" C/A, 5 Speed w/2 speed, very clean truck, **\$4,800**
(610) 932-6111

83 Ford F150 4x4, \$2500;
 78 Ford F150, rebuilt motor, new brakes, \$2500.
 717/569-1345.

'75 Ford F600 cattle truck, new paint, new tires, good condition. 610/746-1824.

'89 Dodge Ram Utility Reading body, 97,000 miles, \$7000.
 717/768-3769,
 717/354-5651.

1980 VW Rabbit PU, Diesel 4 spd only 70,000 miles 1 owner like new cond. Call for details **\$3,800 OBO**

1995 Dodge Ram 1500 SLT 318 V8, AT, AC, PW, PL, Fiberglass Topper Chrome wheels, one owner 36,500 miles Green Finish \$16,500

1994 Dodge Ram 3500 Dually Diesel AT, AC, PW, PL, 55,000 miles stainless covers conversion \$19,500

1984 Chevrolet G20 low top conversion van 350 V8, AT, AC, Red/Silver, PW, PL, Low Miles only 76,000 miles very clean only \$4,900

1993 Ford F150 XLT 302 V8, AT/OD, PW, PL, TLT, CC, Tutone Brown Fiberglass Topper very clean very straight 1 owner truck Alloys \$13,500

1992 Bronco Eddie Bauer 4x4 302, AT/OD, PW, PL, leather, alloys, cass, maroon/tan \$15,900

'90 Chevy Scottsdale 2500, 3/4 ton, 2WD, 350 EFI, auto, PS, PB, AM-FM cassette, 46,000 miles, burgundy & silver, \$10,500. 717-733-2873

'90 Chevy Silverado 3500, 8600 GVW, 4x4, 454 EFI, 4 speed, PS, PB, AC, 86,500 miles, dark blue, \$11,000. 717-867-4995

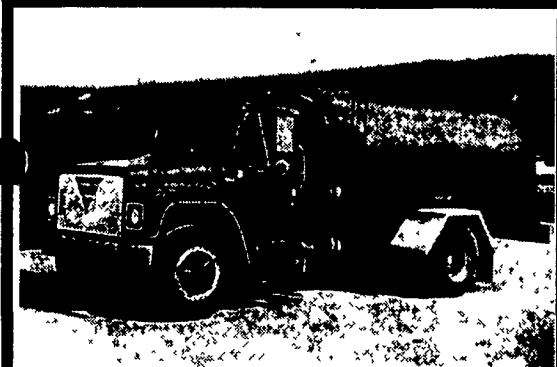
'90 Dodge B350, 15 passenger, 360 auto, PS, PB, air, AM-FM cassette, running boards, latest inspection, high miles, \$4,600. 717-733-2873

'91 Dodge 150, 1/2 ton pickup, 318 EFI, auto, PS, PB, AM-FM cassette, 50,000 one owner miles, charcoal & silver, excellent condition, \$7,950. 717-733-2873

'91 Ford XL E350 club wagon, 12 passenger, 351 EFI, auto, PS, PB, PW, PDL, cruise, tilt, dual air, privacy glass, AM-FM, 63,000 one owner miles, excellent condition, \$10,500. 717-733-2873

'85 Montone dump trailer, 32', 76" sides w/rollover tarp and bows, tubeless tires, only used for grain hauling, good cond. (301)898-9169

'78 GMC Astro, 100,000 miles on new 8V 92 Detroit engine, 13-spd trans, wet line, \$4500. Lehigh Co. 610/767-2153.



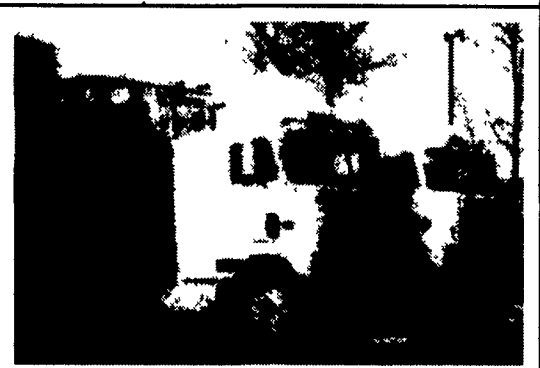
1980 Int. Tanker Truck, 2,850 Gal., 26,500 GVW
\$4,900



1996 Int. 4700 LP w/19' steel rollback & towbar "NEW"
REDUCED! MUST GO \$36,900



1979 Int. F2654, DT466 210 HP, 13-Spd, 50,000 GVW, w/ITM Crane & 22 ft. Body
\$12,500



TRUCK NO.	YEAR	MAKE	MODEL	SERIAL NO.	
62	1981	INT	9670	GA19704	
63	SOLD	1981	INT	9670	HB19835
58	1985	INT	9670	HB25248	
59	SOLD	1985	INT	9670	HB10539
60	1986	INT	9670	HB18059	
61	SOLD	1985	INT	9670	HB19190
64	1987	INT	9670	HB32843	
65	1987	INT	9670	H52842	
67	1987	INT	9670	H760652	
68	1988	INT	9670	H575062	
74	1988	INT	9670	H619987	

SPEC. 9670 Cabover Tandem axle (80,000 CGW), 350 BC-3 and 350 BC-4 Cummins, RT12510 transmissions, A/C and Heater, Rear Ratio 355 and 373, Spring suspension (40,000 lb), Front axle (12,000 lb) Rockwell, Fontane 5th Wheel, 11r22.5 low profile tire, Budd Front, Dayton rear Steel, White with tan interior, Aluminum fuel tanks, 110 to 160 Gallon

FOR SALE
(2) USED
18 ft.
REEFER BOXES

E-TOWN DODGE

1997 Dodge 3500
 Cab, Chassis, Long Wheelbase, 4WD, 5-Speed, Air

'96 GMC Sierra Super Cab, 4x4
 Maroon, 26,000 miles

(25) 1997 Dodge Dakota's Here!

(6) New Style Dodge Pickups,
 used

(2) 1994 Ford F150 Super Cab

4x4, 8 Cyl., AC, Auto, Tilt, Cruise

(35) '97 CLUB CABS Diesel & Gas

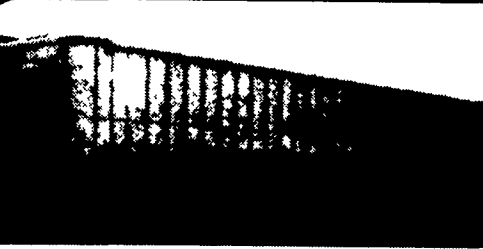
ASK FOR MILTON HESS

Certified Truck Specialist
717-367-6644
717-653-6667
 Elizabethtown, PA




Mack 300, 13-spd, 4800 gal. vac. tank, 8" load unload, Deutz 4cyl. w/blower
 44,000 Rears 18,000 front
\$41,500

1 year old Balzer 4200 Magnum pull-type flotation tank w/Incorporators
717/464-0841




1974 LUFKIN 42 FT. aluminum Potato vegetable grain conveyor trailer.
 Aluminum wheels, Rollover Tarp, Inspected. Light weight, Great Shape
\$6,750 OBO
(610) 286-9510

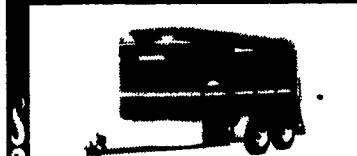
HOSTETLER
Truck Bodies & Trailers
717-667-3921
 Milroy, PA - Located between Lewistown And State College on Rt. 322 in PA.



Grain Bodies, Removable Sides, Various Rears Available, With or Without Hoist 16' w/40" Sides Not Installed
\$2,550



Tool Boxes, 36"x18"x18" **\$147**
 24"x18"x18" **\$132** 42"x18"x18" **\$155**
 30"x18"x18" **\$140** 48"x18"x18" **\$163**



Moritz Slant Load Horse Combo Trailers, Rubber Torsion Axles, Swing Open Divider and Dressing Room Wall
 6'x13' 2 Horse **\$3,395**
 6'x16' 3 Horse **\$3,695**



Hostetler 16' All Purpose Trailer, 10,000 GVW Radial Tires, 5' Ramps Adj. Coupler, Swivel Jack
 was **\$2,795** NOW **\$2,555**

Financing Available for Individuals
Leasing Available for Business or Farm Use



1985 GMC 7000, 5&2 Speed, 28,000# GVW, 396 V8, Dump Body with Tool Box, Low Miles
 Was \$8,500 **NOW \$7,500**




New Designed Corn Pro Bumper Pull Livestock Trailers, Rubber Torsion Axles, Treated Pine Floor
 6'x16' 3500# Axles **\$3,399**
 6'8" Wide x 16' Long 3500# Axles **\$3,495**
 6'8" Wide x 16' Long 6000# Axles **\$3,795**



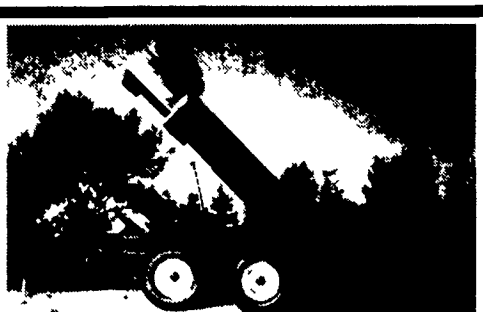
Single and Dual Wheel Pick Up Flatbeds Bulkhead Outside Pockets, Rear Skirt, With or Without Gooseneck Compartments Starting At
\$770



5'x8' Single Axle, 5000# GVW, Dump Thru Gate, Complete
NOW \$2,650



Moritz Bumper Pull Livestock Trailers Torsion Axles, Flat Front.
 6'x6'1/2"x16' 7000# GVW **\$3,399**
 6'x6'8"x16' 7000# GVW **\$3,495**



6-TON DUMP TRAILERS
Direct from Manufacturer

- 10 ft. x 7 ft.
- Floating Tandem Axle
- 3 ft. Front, 3 ft. Tailgate & Grain Chute
- 16 in. Extendable Sides
- 10 ga. Floor & Sides
- 11Lx15 Flotation Tires
- 2-Way 4 in. x 24 in. Hydraulic Cylinder includes hoses

Price \$3,200 FREE Delivery To Northeast USA
Phone (519) 765-4230
 Fax 519-765-4507