

LANCASTER COUNTY LIVESTOCK MARKET AUCTION

Lancaster County Weekly

Lancaster, Pa.

Friday, June 6, 1997

Lancaster Livestock

LANCASTER, PA
JUNE 2, 1997

	Cattle	Calves	Hogs	Sheep	Goats
TODAY	1001	48	90	428	244
LAST MONDAY	781	27	69	257	153
LAST YEAR	924	75	420	641	371

CATTLE [USDA] Slaughter steers and cows steady, sl heifers 50 to 1.00 lower, bullocks firm to 1.00 higher, bulls 1.00 to 2.00 higher [Supply included 69% slaughter steers, 12% slaughter heifers, 8% cows with the balance bulls]

SLAUGHTER STEERS High Choice & Prime 2-4 1240/1450 lbs 68 10-69 25, couple lots 1130/1150 lbs 67 50-67 60, Choice 2-3 1100/1450 lbs 65 10-68 50, Select and Low Choice 2-3 1100/1400 lbs 60 75-65 00

HOLSTEINS High Choice & Prime 2-3 1400/1700 lbs 59 75-62 85, Choice 2-3 1250/1550 lbs 64 25-69 00, Select 1-3 1150/1450 lbs 51 00-54 25

SLAUGHTER HEIFERS couple lots Choice & Prime 2-3 1200/1300 lbs 66 85, Choice 2-3 1100/1300 lbs 62 50-66 00, Select 2-3 980/1200 lbs 57 75-62 50

COWS LO DRESSING BULK HI DRESSING Breaking Utility and Commercial 2-3 40 00-44 00 44 00-45 50 Cutter and Boning Utility 1-3 38 00-42 00 42 00-44 00 Canner and low Cutter 1-2 27 75-32 00 32 00-35 00

BULLOCKS Choice 2-3 1300/1500 lbs 65 75-67 00, few Select 1-3 950/1300 lbs 50 00-52 50

BULLS Yield Grade No 1 1200/2100 lbs 49 00-55 00, several 57 50-62 75, No 2 1200/1600 lbs 46 00-48 75

CALVES Vealers steady, small supply slaughter calves steady

VEALERS High Good and Low Choice 180/350 lbs 65 00-72 00

SLAUGHTER CALVES Good and Choice 300/450 lbs 50 00-65 00

HOGS Barrows and gilts steady

BARROWS AND GILTS US 2-3 270/300 lbs 50 00-53 00

SHEEP Slaughter lambs steady 5 00 to 8 00 lower, slaughter ewes steady Supply included 50% New Crop lambs with the balance slaughter ewes

NEW CROP LAMBS Choice 1-2 30/50 lbs 105 00-112 00, 50/80 lbs 92 00-104 00, 80/110 lbs 90 00-96 00

SLAUGHTER EWES Utility & Good 1-2 38 00-45 00, 2-3 25 00-32 00

GOATS [All sold by the head]

BILLIES Large 100 00-115 00, few 125 00-144 00, Medium 70 00-90 00

NANNIES Medium and Large 45 00-65 00

KIDS Choice 40 00-58 00, Good 30 00-40 00, Utility 20 00-30 00 — Boundary (ID y8fcCoWCbXpCO5AM jHkDCg)—

Vintage Livestock

PARADISE, PA
JUNE 3, 1997

	Cattle	Calves	Sheep	Goats
TODAY	604	706	6	0
LAST TUESDAY	587	663	4	1
LAST YEAR	548	745	10	2

CATTLE [USDA] [Supply included 31% slaughter steers and 60% cows] Average Choice to Prime sl steers fully steady, Select to Average Choice steady to 50 lower, although closing steady, sl heifers scarce, cows 1 00 to 2 00 lower, most decline on Cutter and Boning Utility, bulls not fully tested

SLAUGHTER STEERS Choice & Prime 2-3 1175/1450 lbs 67 75-70 10, six head 70 50-71 50, Choice 2-3 1125/1460 lbs 65 00-68 35, few lots early 64 50-65 00, Select and Low Choice 2-3 1100/1450 lbs 62 75-65 00

HOLSTEINS Choice 2-3 1300/1450 lbs 57 75-58 25, one lot High Choice and Prime 1500 lbs @ 61 25, one lot Select 1400 lbs @ 50 50

HEIFERS few Choice 2-3 1170/1225 lbs 62 25-64 50, couple Choice and Prime 2 1130/1295 lbs 68 25-69 50

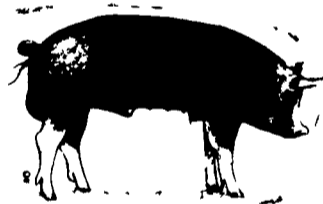
COWS Breaking Utility and Commercial 2-3 bulk 37 00-40 00, high dressing 41 00-44 50, Cutter and Boning Utility 1-3 low dressing 35 00-38 00, bulk 38 00-40 00, high dressing 40 00-44 00, Canner and Low Cutter 1-2 low dressing 27 00-30 00, bulk 30 00-35 00

CALVES Vealers steady Supply included 569 in graded sale of which 87% sold to return to farm

VEALERS few Choice 200/275 lbs 79 00-87 00, High Good and Low Choice 160/320 lbs 60 00-72 00, 80/115 lbs 35 00-50 00, Standard and Low Good 60/85 lbs 20 00-32 00

RETURNED TO FARM 20 head 120/125 lbs Holstein bulls 116 00, 165 head 95/115 lbs 126 00-135 00, 50 head 85/90 lbs 87 00-99 00 and 15 head 80 lbs 40 00, 110 head small frame 95/115 lbs 93 00-98 00, 40 head 90/95 lbs 60 00 and 25 head 80/85 lbs 45 00, 30 head 90/120 lbs Holstein heifers 120 00-137 00 and 15 head 80/85 lbs 99 00, 15 head small frame 90/105 lbs 92 00 and 15 head 70/75 lbs 25 00

SHEEP NO MARKET TEST!
GOATS NO MARKET TEST!



Lancaster Livestock Auction

Wednesday's market report has been discontinued until further notice because of unsubstantial receipts.

Mercer Livestock

MERCER, PA
JUNE 3, 1997

CATTLE 505 [PDA] Compared with last week's sale slaughter steers mostly steady, cows 25 to 1 50 lower

STEERS few High Choice and Prime 1250/1300 lbs 65 50-67 00, Choice 1075/1650 lbs 63 00-67 00, Select 55 50-63 25, Standard 44 75-48 50

HOLSTEINS few Choice 1200/1575 lbs 55 00-63 25, few Select 51 00-55 25, few Standard 46 25-50 00

HEIFERS Choice 960/1475 lbs 62 00-64 75, Select 54 25-61 25, Standard 45 50-54 50

COWS Breaking Utility and Commercial 39 00-42 50, couple 45 25, Cutter and Boning Utility 34 25-40 00, Canner and Low Cutter 30 25-36 25 Shells down to 22 00

BULLS Yield Grade No 1 1000/2150 lbs 44 50-53 25, few No 2 950/1550 lbs 39 00-46 25

FEEDER CATTLE STEERS: Medium Frame No 1 225/875 lbs 65 00-77 00, few to 86 00, Large Frame No 2 275/875 lbs 49 00-64 50, HEIFERS: Large Frame No 1 450/825 lbs 62 00-72 50, Medium Frame No 1 325/800 lbs 62 50-79 00, Large Frame No 2 475/830 lbs 37 00-51 00, Medium Frame No 2 225/600 lbs 55 00-66 00, BULLS: few Large Frame No 1 425/700 lbs 64 00-84 00, Medium Frame No 1 250/700 lbs 60 00-82 00, Large Frame No 2 420/675 lbs 40 00-57 00, Medium Frame No 2 275/800 lbs 50 00-69 00

CALVES 150 VEALERS Standard and Good 75/125 lbs 30 00-40 00, Utility 60/90 lbs 10 00-25 00

FARM CALVES: No 1 Holstein bulls 90/130 lbs 100 00-128 00, No 2 80/130 lbs 42 00-92 00, few No 1 Holstein heifers 85/100 lbs 110 00-126 00, No 2 70/110 lbs 40 00-110 00 Beef cross bulls and heifers 75/195 lbs 40 00-103 00.

HOGS 64 BARROWS AND GILTS few US 1-2 250/260 lbs 57 00-57 25, US 1-3 220/260 lbs 55 75-56 25, US 2-3 200/300 lbs 52 75-54 75 SOWS US 1-3 380/680 lbs 47 00-51 50

BOARS few 200/660 lbs 35 50-39 75

FEEDER PIGS 0 NO MARKET TEST!

SHEEP 1 NO MARKET TEST!
GOATS 4 Couple Small 20 00 & 23 00, couple Small Kids @ 16 00 — per head

New Holland Livestock

New Holland, Pa.
Thursday, June 5, 1997
Report Supplied by USDA

	Cattle	Calves	Sheep	Goats
Today	1658	767	306	309
Last Thursday	1393	670	378	444
Last Year	1295	548	239	243

CATTLE: SLAUGHTER STEERS GENERALLY 1.00-1.50 LOWER; SLAUGHTER HEIFERS NOT WELL TESTED TO ESTABLISH A TREND; COWS STEADY TO 1.00 LOWER; BULLS STEADY TO FIRM IN LIGHT TEST. SUPPLY INCLUDED 55 PERCENT SLAUGHTER STEERS, 6 PERCENT SLAUGHTER HEIFERS, 28 PERCENT COWS, 3 PERCENT BULLS, WITH THE BALANCE FEEDERS.

SLAUGHTER STEERS: HIGH CHOICE AND PRIME 2-3 1150-1450 LB. 66.25-68.75, WITH A FEW 68.85-69.00; CHOICE 2-3 1075-1525 LB. 64.00-66.00; SELECT AND LOW CHOICE 2-4 1035-1600 LB. 58.75-64.25.

HOLSTEINS: CHOICE 2-3 1275-1590 LB. 55.50-59.00; SELECT AND LOW CHOICE 2-4 1200-1475 LB. 50.00-55.00.

SLAUGHTER HEIFERS: FEW CHOICE AND PRIME 2-3 1000-1375 LB. 61.00-65.75.

COWS: BREAKING UTILITY AND COMMERCIAL 2-3 BULK 36.00-40.50, HIGH DRESSING 41.00-45.75; CUTTER AND BONING UTILITY 1-3 LOW DRESSING 34.00-36.50, BULK 37.00-39.00, HIGH DRESSING 40.00-43.50; CANNER AND LOW CUTTER 1-2 LOW DRESSING 26.50-29.50, BULK 30.00-34.00.

BULLS: YIELD GRADE 1-2 1200-2395 LB. 41.75-48.50.

CALVES: VEALERS 5.00-10.00 LOWER.

VEALERS: CHOICE 200-400 LB. 80.00-90.00; GOOD AND LOW CHOICE 200-400 LB. 65.00-80.00, 80-110 LB. 40.00-50.00; STANDARD AND LOW GOOD 60-80 LB. 15.00-40.00.

RETURNED TO FARM: HOLSTEIN BULLS 90-120 LB. 75.00-145.00; SMALL FRAME 80-90 LB. 50.00-75.00. HOLSTEIN HEIFERS 90-110 LB. 50.00-110.00.

SHEEP: SLAUGHTER LAMBS 10.00 LOWER; SLAUGHTER EWES MOSTLY STEADY.

NEW CROP LAMBS: CHOICE 1-2 20-60 LB. 100.00-120.00, 60-80 LB. 100.00-110.00, 80-110 LB. NOT TESTED.

SLAUGHTER EWES: UTILITY AND GOOD 1-3 30.00-50.00.

GOATS: ALL GOATS SOLD BY THE HEAD. BILLIES: MEDIUM AND LARGE 75.00-100.00, WITH A FEW LARGE 100.00-150.00. MUTTON: MEDIUM AND LARGE 70.00-90.00;

This Week Cattle 3265 Calves 10
Last Week 2817 14
Last Year 2764 1368

CATTLE: SLAUGHTER STEERS WERE GENERALLY 1.00-1.50 LOWER FOR THE WEEK; SLAUGHTER HEIFERS TRADED STEADY ON A LIGHT TEST; COW PRICES CLOSED STEADY TO 2.00 LOWER, WITH THE MOST DECLINE FOR CUTTER AND BONING UTILITY; BULLOCKS WERE NOT ADEQUATELY TESTED TO ESTABLISH A TREND; BULL PRICES WERE MOSTLY STEADY THROUGHOUT THE WEEK. SUPPLY INCLUDED 55 PERCENT SLAUGHTER STEERS, 6 PERCENT SLAUGHTER HEIFERS, 28 PERCENT COWS, 6 PERCENT BULLS, WITH THE BALANCE FEEDERS.

SLAUGHTER STEERS: HIGH CHOICE AND PRIME 2-4 1150-1450 LB. 59.75-62.85; CHOICE 2-3 1075-1550 LB. 55.50-59.00; SELECT AND LOW CHOICE 2-3 1025-1600 LB. 50.00-55.00

HOLSTEINS: HIGH CHOICE AND PRIME 2-3 1400-1700 LB. 59.75-69.50; CHOICE 1265-1590 LB. 61.00-66.00; SELECT 1150-1450 LB. 57.75-62.50.

SLAUGHTER HEIFERS: HIGH CHOICE AND PRIME 2-3 1130-1300 LB. 65.75-69.50; CHOICE 2-3 1000-1300 LB. 61.00-66.00; SELECT 2-3 980-1200 LB. 57.75-62.50.

COWS: BREAKING UTILITY AND COMMERCIAL 2-3 BULK 36.00-44.00, HIGH DRESSING 41.00-45.75; CUTTER AND BONING UTILITY 1-3 LOW DRESSING 34.00-36.50, BULK 37.00-42.00, HIGH DRESSING 40.00-44.00; CANNER AND LOW CUTTER 1-2 LOW DRESSING 26.50-32.00, BULK 30.00-35.00.

BULLS: YIELD GRADE 1 1200-2395 LB. 41.75-55.00, SEVERAL 57.50-62.75; YIELD GRADE 2 995-1600 LB. 38.75-48.75.

CALVES: VEALERS AND SLAUGHTER CALVES TRADED STEADY THROUGHOUT MOST OF THE WEEK.

VEALERS: CHOICE 200-400 LB. 79.00-90.00; HIGH GOOD AND LOW CHOICE 200-400 LB. 65.00-80.00, 160-350 LB. 60.00-72.00, 80-115 LB. 35.00-50.00; STANDARD AND LOW GOOD 60-80 LB. 15.00-40.00.

RETURNED TO FARM: BULK 90-120 LB. HOLSTEIN BULLS 75.00-145.00, 80-90 LB. 87.00-99.00; SMALL FRAME 80-115 LB. 50.00-98.00, BULK 90-120 LB. HOLSTEIN HEIFERS 99.00-137.00, 80-90 LB. 50.00-92.00.

NANNIES: MEDIUM AND LARGE 50.00-70.00; YEARLINGS: GOOD AND CHOICE 50.00-90.00; KIDS: CHOICE 40.00-60.00; GOOD 20.00-40.00.

KIRKWOOD HAY AUCTION
Hay, Straw and Grain Auction
EVERY TUESDAY 11:00
Located Rt 472 5 miles south of Quarryville or 6 miles north of Oxford corner of Rt 472 and Noble Road
Lloyd H. Kreider, Auctioneer
AU 000513L
No out of state checks

B&R CATTLE CO
RD 1, Marietta, PA 17547
Office Phone (717)653-8164
Specializing in Stockers & Feeders
JOHN BOWMAN (717)653-5728
RON RANCK (717)656-9849

HAY, STRAW, & CORN — SALE —
Sale Starts Every Friday at 10 AM
GREEN DRAGON MARKET & AUCTION
955 N. State St.
Ephrata, Pa. (717) 738-1117
1 mile North of Ephrata on N. State St.
Out of State Buyers-Cash or Certified Check Only

QUALITY FEEDER CATTLE
Financing Available
* Fixed Interest Rates * Interest Due when Cattle Are Sold * No Monthly Payments
SCARFF BROS. INC.
Cattle Dealers • Licensed & Bonded
2300 Fallston Road • Fallston MD 21047

Lance N. Scarff Farm (410) 877-0370 Fax (410) 877-7802	C. Howard Scarff, II Home (717) 445-4355 Fax (717) 445-7237 Mobile (717) 940-2633	W. Conly Scarff Home (410) 838-5883 Mobile (410) 790-2650
--	--	---

Contract Feeding Programs • Marketing of Finished Cattle • Dairy Heifers

Get more capacity and better service from Chore-Time's New Next Generation bin

Contracts available call for information
■ Turkey ■ Broiler
Call for our free brochure "What is contract production?"

Replace your bulbs and save electricity with **SCREW IN FLUORESCENT LIGHTS**
5-7-9 Watts | 13 Watts
5.49 ea. | 5.79 ea.

Light Bulbs 25 to 100 Watts **35¢ Ea.**
Brass Base - 5000 Hrs.

High Capacity 40" roof (left) allows more storage and stays cleaner than conventional 30" roof (right)

Hydro-Shield™ Weather Guard prevents water from running down hopper

ACCESS PLUS™ permits easy clean out of the bin from the ground.

Northeast Agri Systems, Inc.
Flyway Business Park
139A West Airport Road
Lititz, PA 17543
Ph (717) 569 2702
1-800-673-2580

Dalmanova Store
305 University Ave
Ferrydale, MD
(Formerly Long Lumber)
1-800-735-6361

VINTAGE SALES STABLES, INC.

SALE TUESDAYS

10:30 A.M. SLAUGHTER CATTLE AUCTION- STEERS, BULLS, HEIFERS, COWS, FEEDER CATTLE

6:15 P.M. CALVES, SHEEP, GOATS •GET CALVES IN EARLY- OUR STATE GRADER STARTS AT 10:30 A.M.

Selling Feeders Every Tuesday At Approx. 1 PM

FOR MORE INFORMATION CONTACT

L. ROBERT FRAME, SR., PRESIDENT
BUS (717) 442-4181 BUS (717) 768-8204
HOME (610) 458-8518
IRWIN MARTIN, FIELD REP.
(717) 733-7434
KENNETH E. HERSHEY, FIELD REP.
(717) 442-4874

TRUCKING SERVICE AVAIL-LOCAL & LONG DISTANCE (RT. 30, 10 MILES EAST OF LANCASTER IN PARADISE, PA)