

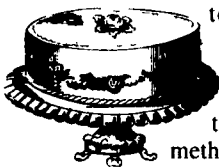


JUNE 2-8, 1997

ORTHODOX ASCENSION, JUNE 5.

**HAPPY BIRTHDAY, SOCRATES!**

June 5 marks the birthday of Socrates (in around 469 B.C.), a man who was once considered the wisest in Greece. Though a great philosopher, he never wrote about his life or his ideas but left it to his student Plato. His father was a sculptor and his mother a midwife. In teaching his students, one of Socrates' major tenets was that conscience should be above the law, an idea that later made its way into the mainstream of Christianity. His method of teaching was notable for its use of questions and careful cross-examination, rather than lectures or an imparting of knowledge. He expected his students to think and reason.



*No evil can happen to a good man . . .*

- Socrates

**TIP OF THE WEEK**

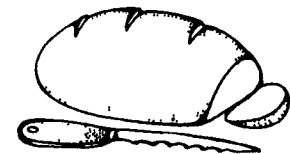
Plain yogurt on a damp cloth works well for cleaning piano keys.

**PEACEMAKER SANDWICH**

- 2 long loaves French bread
- 1/2 teaspoon cayenne
- 1/2 cup minced fresh parsley
- 1 pound butter, melted
- 2 quarts large oysters (about 4 dozen)
- 2 lemons, thinly sliced

carding crumbs, warm loaves in oven. Add cayenne and parsley to butter and dip oysters in it. Place dipped oysters on broiler pan, and broil 4 inches from heat, turning once, until they are just browned — about 2 minutes for each side. Place oysters in hollowed bread and top with lemon slices. Replace bread slices over top and cut each loaf into quarters, to serve as sandwiches.

Makes 8 servings.



**The OLD FARMER'S WEATHER PROVERBS**



*Wet June, dry September.*

*If on the 8th of June it rain, it foretells a wet harvest, men sain.*

*A summer fog for fair,  
 A winter fog for rain,  
 A fact most everywhere,  
 In valley and on plain.*

**Special Offer**  
 Handy chart full of interesting weather proverbs Send \$3 to Weather Chart, Dept UF, The Old Farmer's Almanac, P.O. Box 520, Dublin, NH 03444

**Carlisle Livestock**

Carlisle, Pa. May 27, 1997

SLAUGHTER CATTLE: STEERS, HOLSTEINS CHOICE 59.50-60.00; COWS BREAKING UTILITY AND COMMERCIAL 40.00-43.00; CUTTER AND BONING UTILITY 37.00-42.00; CANNER AND LOW CUTTER 33.00-36.75; BIG MIDDLE 36.50-39.50; SHELLY 31.00 AND DOWN.

BULLS: 1020-2020 LBS. 42.75-54.00. FEEDER CATTLE: ACTIVE! FEEDER STEERS MEDIUM AND LARGE #1 300-850 LBS. 70.00-79.00, HOLSTEINS/DAIRY TYPES 60.00-71.00; MEDIUM AND LARGE #2 300-850 LBS. 50.50-69.00.

FEEDER HEIFERS: MEIDUM AND LARGE #1 300-850 LBS. 65.00-73.00; HOLSTEINS/DAIRY TYPES 38.00-70.00; MEDIUM AND LARGE #2 300-850 LBS. 53.00-64.00.

FEEDER BULLS: MEIDUM AND LARGE #1 400-700 LBS. 61.00-67.00; #2 650-1010 LBS. 49.50-57.00.

CALVES: VEALERS STANDARD AND GOOD 41.00-80.00; CALVES RETURNING TO THE FARM, ACTIVE! HOSLSTEIN BULLS #1 90-140 LBS. 98.00-130.00; HOLSTEIN HEIFERS #1 90-130 LBS. 112.50-135.00; BEEF X BULLS TO 77.50; BEEF X HEIFERS TO 80.00.

SWINE: HOGS US#1-3 220-270 LBS. 56.25-57.00; SOWS US#1-3 300-600 LBS. 42.75-50.25; THIN/WEAK/ROUGH TO 41.50; BOARS 40.00-40.25; FEEDER PIGS BY THE HEAD 12-25 LBS. 19.00-30.00; 30-45 LBS. 28.00-43.00.

GOATS: BY THE HEAD, MEDIUM TO LARGE NANNIES 67.50-75.00; FLESHY KIDS 40.00-65.00.

LAMBS: CHOICE 40-80 LBS. 117.50-135.00.

SHEEP: ALL WEIGHTS 30.00-49.00. SALE EVERY TUES. 5 P.M. FOR RABBITS, POULTRY AND EGGS, 6:30 P.M. FOR LIVESTOCK, STARTING WITH CALVES.

EARLYBIRD PENS FOR CATTLE, COWS, AND HOGS CLOSE EVERY TUES. AT 2 P.M. FOR PREMIUM PRICES, USE THESE PENS.

NEXT SPECIAL FEEDER CATTLE SALE TUES., JUNE 17. SALE TIME APPROX. 7:30 P.M.

NEXT SPECIAL FED CATTLE SALE TUES., JUNE 3 AND 17. PEN LOTS OF CATTLE WILL BE SOLD IN ORDER RECEIVED.

NEXT STATE GRADED FEEDER PIG SALE FRIDAY, JUNE 13 AND 27. RECEIVING 7-11 A.M. SALT TIME 1:30 P.M.

**OK City Feeder Cattle**

OKLAHOMA CITY, OK MAY 28, 1997

Compared to last week: Feeder cattle and calves fully steady. Demand very good for light post Holiday receipts. Conditions and quality an improvement from last week. Quality of supply average to attractive. Flesh conditions of feeder cattle medium to slightly fleshy. Weigh-ups gaunt to average. Slaughter cows steady to 1.00 lower with moderate demand. Slaughter bulls steady with light to moderate demand. 215 cows and bulls sold with 70 percent to packers. Receipts this week 5,400; last week 15,714; last year 5,048. Supply consisted of 84 percent yearlings over 600 lbs; 12 percent calves and light yearlings under 600 lbs; 4 percent cows and bulls. Prices follow with weighted average weight and price in parenthesis. Feeder Steers Medium and Large 1: few 250-350 lbs (306 lbs) 114.00; 400-450 lbs (417 lbs) 92.50-109.50 (103.94); 450-500 lbs (466 lbs) 90.00-101.00 (95.49); 500-550 lbs (518 lbs) 89.00-91.00 (89.38); 550-600 lbs (577 lbs) 84.75-93.00 (91.73); 600-650 lbs (626 lbs) 83.25-88.50 (85.79); load 615 lbs thin 89.50; 650-700 lbs (681 lbs) 79.25-85.00 (81.91); thin 81.00-86.00 (83.95); 700-750 lbs (721 lbs) 76.50-84.25 (79.18); 750-800 lbs (773 lbs) 76.25-80.00 (78.54); 800-850 lbs (828 lbs) 74.00-78.25 (76.51); 850-900 lbs (871 lbs) 73.75-76.75 (75.87); 900-1000 lbs (950 lbs) 73.00-75.00 (73.44). Holsteins Large 2: 700-900 lbs 61.00-64.25.

Feeder Heifers: Medium and Large 1: 400-500 lbs (450 lbs) 80.00-85.00 (82.14); 500-600 lbs (550 lbs) 78.25-80.35 (79.47); 600-700 lbs (650 lbs) 73.25-78.75 (76.31); 700-800 lbs (750 lbs) 72.25-77.00 (75.25); 800-900 lbs (850 lbs) 69.00-74.00 (72.55).

Slaughter Cows: Average dressing: Cutters and boning Utility 38.00-41.50, breaking Utility 41.00-43.00; hi dressing: Cutters and boners 39.50-43.00, breakers 43.00-44.50; lo dressing: Cutters 35.00-36.50, boners 37.00-37.50, breakers 35.50-41.00. Few Canners 31.00-32.25.

Estimated dressed cost at Oklahoma National Stockyards: Cutter 82.35; Boners 80.05; Breakers 79.00; few Canners 74.30; Bulls 86.60.

Slaughter Bulls: Yield Grade 1 1300-2300 lbs average dressing 47.50-50.00; hi dressing 48.00-52.00; hi dressing/hi boning 54.00-54.50; lo dressing 43.50-47.50.

**New Holland Horses**

New Holland Sales Stables  
 New Holland, PA  
 Monday, May 26, 1997  
 Report Supplied By Auction  
 401 HEAD. STEADY MARKET.  
 WORK 885.00-1025.00.  
 DRIVING 435.00-950.00.

RIDING 460.00-900.00.  
 BETTER RIDING 1010.00-1500.00.  
 REGISTERED RIDING  
 485.00-1750.00, 2 AT 2500.00 AND 3050.00.  
 KILLERS, 4 HEAD 900.00-935.00,  
 HEAVYWEIGHTS 675.00-860.00,  
 LIGHTWEIGHTS 400.00-600.00.  
 PONIES 140.00-435.00.  
 LARGE PONIES 525.00-650.00.  
 COLTS 165.00-485.00.

**New Holland Dairy**

New Holland Sales Stables  
 Wednesday, May 28, 1997  
 Report supplied by auction  
 111 DAIRY COWS; 213 HEIFERS; 15 BULLS. MARKET STRONGER.  
 LOCAL FRESH 500.00-1285.00.  
 LOCAL SPRINGERS 475.00-1025.00.  
 FRESH HEIFERS 675.00-1275.00.  
 UPSTATE LOADS FRESH 1025.00-1550.00.  
 BETTER FRESH COWS 1385.00-1550.00.  
 HERD OF PUREBREDS, ALL STAGES, 775.00-2400.00, HEIFERS 535.00-1325.00.  
 SPRINGING HEIFERS LARGE 975.00-1150.00, SMALL 410.00-810.00.  
 SHORTBRED HEIFER 425.00-975.00.  
 OPEN BREEDING AGE HEIFERS 580.00-775.00.  
 SMALL OPEN HEIFERS 410.00-525.00, SMALLER 150.00-335.00.  
 BULLS 435.00-725.00, PUREBREDS 635.00-700.00.

**North Jersey Livestock**

Hackettstown, NJ  
 Report Supplied by Auction  
 Tuesday, May 27, 1997  
 CALVES .18-1.30.  
 COWS 23-44%.  
 EASY COWS 21-34  
 FEEDERS 300-600 LBS. .18-.95.  
 HEIFERS 34-.63.  
 BULLS .36-.57.  
 STEERS 40-.64.  
 ROASTING PIGS EA. 38.00.  
 BOARS .44.  
 SHEEP .10-.61.  
 LAMBS EACH 16.00-71.00.  
 LAMBS PER LB. 41-1.29.  
 GOATS EACH 33.00-122.50.  
 KIDS EACH 5.00-83.00.  
 TOTAL: 722.

**WANTED**

**SOW PRODUCERS**

- Existing Farms
- New Construction

**WE OFFER:**



**GUARANTEED PRICE**

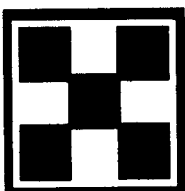
5 to 7 Year Contracts



**RECORDKEEPING AND ON FARM SERVICE**



**FINANCING AVAILABLE**  
 to Qualified Producers



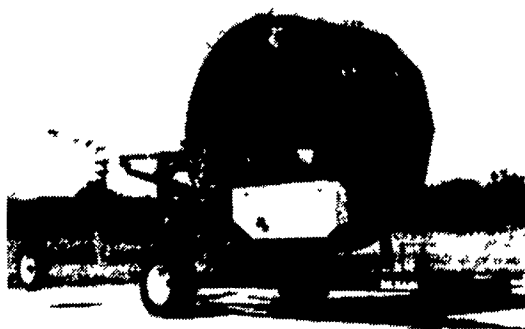
**PURINA MILLS, Inc.**  
 800-873-5300

Manufacturing Facilities: Lancaster, Harrisburg, Hagerstown (2/97), Wyalusing and Knoxville



**IRRIGATION SEASON IS COMING**

We specialize in irrigation design and engineering. If you are looking for sprinkler systems, traveling guns, a drip system or a slurry system, call us. We will design a system for you



**Travelers**

- AG-Rain
- Cadman
- Evergreen
- ABI

**Pumps**

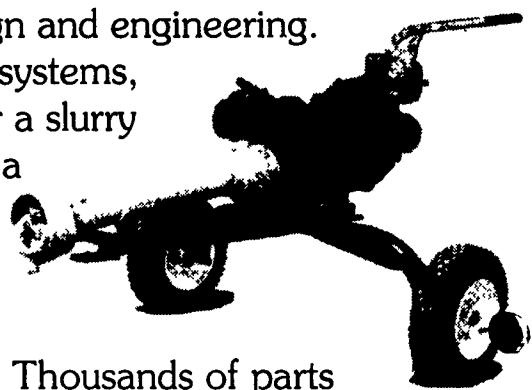
- Kifco Caprari
- Cornell
- Monarch
- Marlou

**Sprinklers & Guns**

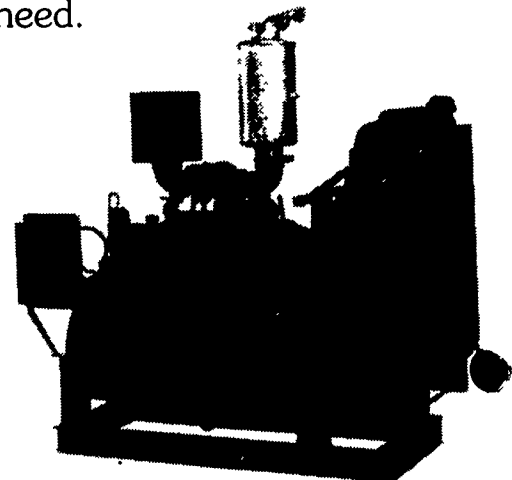
- Rainbird
- Nelson

**Power Units**

- John Deere
- Cat.



Thousands of parts in stock to fabricate any part you may need.



**ZIMMERMAN IRRIGATION INC.**

RD #3, Box 309, Mifflinburg, Pa. 17844

**1-800-452-5699**