

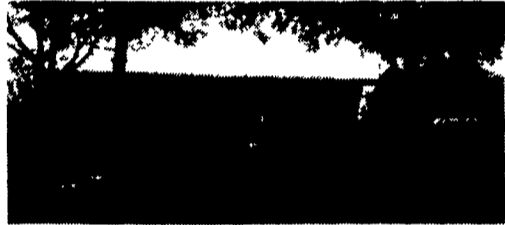
CIVIL WAR ERA FARM

Brick two story home built circa 1847. Expertly remodeled. Improvements include re-plastered walls, new porches, updated wiring, plumbing. Large bank barn, stream on property. Chambersburg area. \$179,000. Ask for John Baker.



SURROUNDED BY NATURE

78 acres of beauty, over 2000 feet of stream on this property. Road frontage on two sides. original home built 1850, hill top chalet is 3 br with loft. Acreage is tillable with pasture and woods. Located in Willow Hill with unobstructed views down the valley. Call John for details.



\$89,000 FAIRLY NEW 4-HORSE FARM

on 8.7 ac. with stream. Well-maintained property. Near Newburg. Call Phyllis



\$260,000 ONE-OF-A-KIND: PROPERTY

ON 22 acres. Restored 1800 Limestone Farmhouse with exposed stone walls, brick fireplace in master bedroom, stone fireplace in living room, hardwood floors, french doors in dining room to patio, plus many more renovations. Large bank barn Near PA Turnpike & Rt. #75 Willow Hill. Call Phyllis



\$230,000 FARM 100 ACRES

Limestone soils bounded by the west branch of the Conococheague Creek Large barn Large family home. Near the PA turnpike and Rt. #75 at Willow Hill Call Phyllis for details.

* Cumberland County \$219,000 farm. Presently a working dairy farm. 3 silos, manure storage, freestall barn, bank barn, poll barn and other outbuildings. 2-story 5 bedroom all brick farmhouse. Shippensburg area. 25 acres - more land to purchase or rent is available. Owner financing also available. Call Lane Thrush at RE/MAX Realty Agency, Inc. 717-267-0011 or home 717-532-9442.

* Cumberland County 94-acre limestone soil. Set up for beef and hog finishing. Bank barn, large pole barn and shop, small grain storage and 2-story 4-bedroom home. Offered at \$475,000. Call Lane Thrush at RE/MAX Realty Agency, Inc. 717-267-0011 or home 717-532-9442.

RE/MAX realty agency, inc.

370 ACRE CROP FARM AND GARDEN CENTER: 350 tillable, all in large adjoining fields. 2 Barns for hay storage, 2 garages for equipment repair and storage. 3 bay pole barn for equipment storage. 50 ton Cat Bin with dryer. Grainery with hammer mill and seed cleaner. Loafing shed for heifers and beefers. Lots of new fences. Nice little ranch style home. Brand new Garden Center with 26' x 50' store, 8 bay pole barn, 3 loading docks for pick ups. Drilled well with working Wind Mill. This is a nice, neat operation in a long growing season area. Asking \$159,900. Some owner financing possible.

Dairy of Distinction 60 Cow Free Stall. 290 acres, 150 tillable (all excellent Alfalfa ground). Bou-matic Flat Parlor. Mueller bulk tank. 3 Harvestore Silos, Slurry Store. Beautiful and totally remodeled, 5 Bedroom 2 full baths, with large Sunroom. Worried about not enough Land. How about this, 250 tillable acres that adjoin the Farm RENT FREE. And did I mention this Farm adjoins State Game Lands. \$199,000.

405 Acres, 150 tillable, 150 pasture (some of it's brushy), balance woods. 50 stall barn, with addition for heifers and calves. 800 gallon bulk tank. 10 year old 20x70 silo, 18 yr. old house, nice, 6 bedroom, 2 full bath home with large attached garage. Owner's health forces Sale. Asking only \$97,500.

20 other Dairy, Beef, and Hobby Farms from \$67,500 to \$149,000.

Finley Real Estate
Rural Properties, Farms Residential, Business
207 Montgomery St. - Ogdensburg, NY 13669
RUSSEL J. FINLEY
BROKER - OWNER
24 Hour Phone # 315-393-6325

CENTRAL PENNSYLVANIA RURAL PROPERTIES

MIFFLIN CO.

GENERAL STORE - with a 50x70 2-story building located in the heart of Amish country in the Village of Allensville. Recently remodeled second story apartment with 1500 sq. ft. of living area. Complete with all operating equipment and inventory. \$125,000.

WAYNE TOWNSHIP - 191+ acre former dairy farm approximately 20 miles west of Lewistown with frontage on U.S. Route 22. Stream and excellent spring on the property. Acreage is 120+ cropland, 65+ acres pasture and woodland, and 3 acres farmstead. Priced at \$270,000.

WAYNE TOWNSHIP - 131+ acres approximately 20 miles west of Lewistown with a 40x48 wood bank type barn and old log house. Acreage is 54+ acres pasture, 48+ acres woodland, and 28+ acres cropland. Ideal recreation area. Priced at \$165,000

CENTRE COUNTY

STATE COLLEGE FARMETTE - Lovely, fully restored 10-acre horse farmette located in Harris Township. Property offers large 3-bedroom, 2-bath home, oversized 2-car garage, summer kitchen, smokehouse, 4-stall barn with turnout area and lovely views. \$289,900.

SHINGLETOWN ROAD - 36.12 acres with farmhouse built in 1844, barn, and outbuildings. Small stream flows across property. Excellent location. \$415,000

CENTRE HALL AREA - 15 acres to be developed or make a beautiful home site. Wooded acreage. \$125,000

DEVELOPMENT LAND - 203 acres with 2200 feet of road frontage on Fox Hill Road across from University Park Airport. Call for further information.

PATTON TOWNSHIP - 127.81 acres, mostly all wooded, a few open acres. A portion borders land of the Toftrees Golf Resort.

CENTRE HALL - 15.22 acres, some trees. Allows horses. Convenient to State college. Great views. \$98,500

LAUREL RUN ROAD - Located in Port Matilda, this ranch home offers beautiful 270 degree views of the mountains. Only 15 minutes to State college. 3 bedrooms, 2 baths, 10 acres. \$124,900

POE VALLEY AREA - Attractive, well-maintained A-frame camp. Ready to move in. All furniture and appliances included. Deck surrounds camp. Utility building and workshop. Situated on 1.83 acres and only 2 miles from state park. Only \$74,900.

PREMIUM HORSE PROPERTY - High amenity custom home. Light and spacious. 4 bedrooms, 3.5 baths, 2 family rooms, a/c, hardwood, extensive landscaping. Fantastic 8-stall barn with living quarters, equipment shed with 2 stalls, turnout and overhead storage, lighted sand ring. \$379,900

FERGUSON TOWNSHIP Rt. 45 - 205 acres mostly wooded with stream. Approximately 20 acres open pasture. \$499,000.

FERGUSON TOWNSHIP - Gatesburg Road, 31 acres all wooded. \$150,000.

BELLEFONTE - 85± acres on Buffalo Run Road in process of being subdivided. Gently rolling land with million dollar views of the valley and countryside. \$465,000.

HALFMOON TOWNSHIP - 10.7 acres, approved for horses. Call today! \$96,300

237 ACRE - Farm w/ 2 story farmette, 42x72 pole building, 4 stall barn. All in very good condition. Plus a bi-level on 10 acres. \$599,900 Reduced to \$449,500

HARRIS TOWNSHIP - Laurel Meadows located between Boalsburg and Potters Mills off Route #322. Building lots range from 2.4 to 13.74 acres. SCASD, public street, community sewage, well needed, restrictive covenants, horses permitted on select lots. Priced \$67,900 to \$141,100.

HUNTINGDON COUNTY

MCALLEVY'S FORT AREA - Cape cod home on 3.3 acres. 3 bedrooms, 2 baths, 2 two-car garages, fireplace, hot tub. \$159,000

PETERSBURG - Custom log home with beautiful wood floors, open floor plan. On 10+ acres with small pond one-stall barn with electric and water. \$169,900

JACKSON TOWNSHIP - Wooded lot of 22.935 acres. Only 16 miles from State College. Has a small building with approximately 134 feet of road frontage. Excellent view of Stone Valley and McAleveys Fort area. \$99,900

OTHER LAND PARCELS AVAILABLE.

CALL OR WRITE FOR A FREE LIST.

WANTED: Rural land and farms. Have buyers, will list.

Farm and Land Division
Fred Strouse (814) 234-4000
Mel Rocky (814) 466-6688
Ronald S. Gilligan (814) 237-0189
James Harpster (814) 238-2525

KISSINGER BIGATEL & BROWER
Realtors

2300 South Atherton
State College, PA 16801
800-876-3395
(814) 234-4000
Fax 814-234-1332

The Professionals in Farm Real Estate Service

Historical late 1700 rustic stone mill, registered with the Lancaster County Historical Society, presently used as an antique craft & furniture outlet in the heart of Lancaster Co.

2 1/2 miles east of Intercourse on Rt. 772

717-442-9799

9 a.m.-5 p.m.

For Sale By Owner - Lewis Co., NY

400+ Acre dairy farm, 325 acres tillable, 45 acres plus rotational grazing. Remainder woodland. 100 free stalls, 120' feed bunks, double six parallel parlor, 12 Surge units, with 1,000 gal. bulk tank and plate cooler, liquid manure, silage & haylage bunks, 20x60 Harvestore w/Goliath unloader, presently used for high moisture corn. 2-story frame farmhouse with 1-1/2 baths. Outside wood furnace in shed, combination hot water & hot air heat for house. Concrete pad with hookup for house trailer. \$275,000 \$250,000

315-376-6123 No Sunday Calls, Please

Turnkey price with 80 cows, 30 heifers, full line of farm machinery... \$375,000

BEAUTIFUL FINGER LAKES AREA

COMMERCIAL PLAZA POTENTIAL: 24.608 acres, track of land in Village of Bath, NY, Village electric, sewer, water, and gas. Steuben County. Partially developed. Off expressway 17, exits 38 & 39, also State Route 54, near expressway 390, High traffic count.

HOBBY FARM: 4/5 bdrm Raised Ranch w/finished lower level, 16x24 living rm, 10x14 Country kitchen w/quality appliances, Lg. lawn. 40x60 insulated block repair shop w/14' ceilings. 12x12 insulated overhead door. 220 wiring conduit, Spray booth with down draft ventilation system. Two furnaces, Oil forced air and wood. 3 wells on property. All this and more on 115 +/- acres near Corning/PA border. All this and more for a very reasonable price! #3687

DAIRY FARM: 436.7 acres, 70 acre pasture, 250 acre tillable, 70 acres wooded, pond, barn, barn bldgs, machine shed, double four milking parlor, some piping and feeders. Older 2 bdrm house. OWNER SAYS BRING ME AN OFFER! Asking \$240,000 #3714

238+/- ACRE DAIRY FARM: 200+/- Acres Tillable, 5+/- Acres Wooded, Balance Pasture. 3600 Sq. Ft. main House Needs Completion, 5 Bdrms/3 baths, 2nd house new modular ranch w/28x32 garage. 72x90 Dairy barn, excellent condition. 72 cow ties, drinking cups, 32'x66' Heifer barn, machine shop 36x48 new, 38x22 feed room, 20x24 calf room. 150 feed lot capacity Everything BRAND NEW buildings and all! #3742

500+/- ACRE DAIRY FARM: 250+/- Acre tillable, 150 A pasture, 78x172 main barn, 150 freestall, 120 cow ties, automatic take offs, 3 homes, main house 2 story, 10 rooms, 3 bdrms, 2nd house ranch, 2 bdrm, 1 bath, third home mobile in excellent condition, 2 bdrms, 1 bath. Call Tony for more information. #3740.

SOUTHERN TIER, NY: 3 farms totaling 700+/- acres, First farm - 350 A, Lg Barn bldgs, 4 bdrm home. Second farm - 160 A, 4 bdrm home, third farm - 200 acre Cash crop farm, barn bldgs. #3636.

CAMERON, NY: 4 bdrm house, barn bldgs., 296+/- acres, part forest, part tillable, pond, streams. \$215,000 #3643

BATH, NY: 500+/- acres, many streams, many outbldgs, abandoned house, 3 deeds, part forest. #3647.

VALLEY DAIRY/STEER FARM: 112 acres, 4 bdrm house, barn bldgs, Harvestore, silos w/unloader, level land, 70 acres tillable, balance pasture, Campbell, NY \$189,000 #3695

PINE CITY, NY: 123+/- acres, 18 acres woods, balance tillable, stream, 4 bdrm house, general barn 36x104', panoramic view. Buildings set back 1,000 ft back from the hardtop road Double road frontage, 6 miles to PA Border #3744.

MAKITRA REAL ESTATE, INC.

4 STEUBEN STREET WEST, BATH, N.Y.

14810

OFFICE (607) 776-2468/6665 or (800) 977-2468 After Hours (607) 776-2386