

NH 555 skid loader, cab enclosure, 3000 hrs., \$7900. (717)369-4115

NH 56 hayrake, excellent condition, \$1,100. (717)548-2944.

NH 56 rake, excellent condition, shedded, \$1050. 717/993-6226.

NH 770 forage harvester, 2RW, com head and Super Sweep, pickup head, excellent condition, \$1995. 301-842-3282.

NH 855 round baler, excellent condition, Hesston 7160 field chopper, 3RN, 7' pickup, good condition; MM 1350 tractor. 301-662-5563

NH 273 baler with thrower, good condition, \$2,750. NH 479 haybine \$600. IH 430 baler \$500. JD 2 bottom plow \$175. Chore Time feed bin approx. 2 1/2 ton, assembled but never used \$600. York Co. (717)225-3060.

New Holland 1033, 105 bale wagon, \$5,300. Randolph Scott, Hunt, VA, (804)656-1471.

New Holland 316 baler with model 75 pan kicker, elect controls, like new, used very little, asking \$8,000 obo. Day (610)933-8530 Eve. (610)933-4827

NH 258 Rake w/dolly wheels, like new, \$2850; Pequea 710 tedder, new, \$1450; NH 477 7' haybine, nice, \$2450; JD 6R 3pt cultivator, \$875. 610/562-4464.

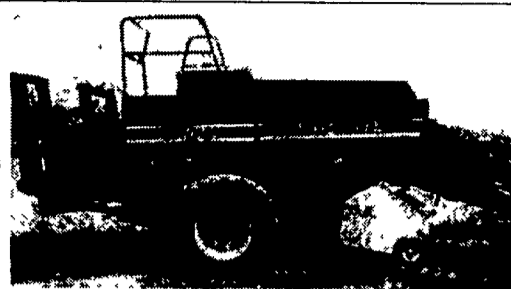
Perkins 6.354
Our Specialty
Rebuilding
Exchanging

**MF Tractor
Splitting Stands
For Rent**

GLICK'S ENGINES
717-656-4842
After 6 pm
Amos Glick

NH 320 square baler w/ elec. thrower, \$4,250. (717)369-4115

NH 489 haybine w/new rolls, \$2200; JD 245 loader, like new, \$3200. 814/766-3687.



NH 2000 Lg. Sq. Baler 1992 Model,
Bale command, used lightly for
only "5" seasons.

Excellent Condition
(610) 298-2870 days
(610) -298-3014 eves



Case 830 Tractor 65 PTO Horsepower, 5700 hrs. good solid tractor. Contact Frank Claypoole at the Westminster, MD store.

D.W. OGG

5149 Cap Stine Rd. 961 Leister's Church Rd.
Frederick, MD 21703 Westminster, MD 21157
301/473-4250 410/848-4585
301/293-6833 410/876-2121

MasterCard VISA

We now offer financing & lease programs

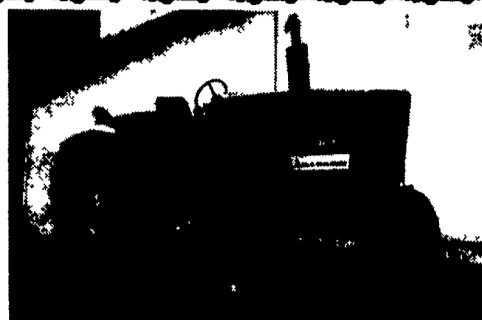
IH 1466 cab,	\$8,950
Int 1086 cab New T/A, injection pump, Tires.....	\$13,000
White 2-105, 4WD, cab.....	\$11,500
JD 4230 cab.....	\$11,500
JD 4010 Cab.....	CALL
MF 1080, new clutch & multipower & paint.....	\$7,500
JD 2840 w/loader.....	\$11,750
Ford 7600.....	\$10,750
Kubota M 7950, 4WD w/loader.....	\$18,500
JD 2640 rebuilt engine.....	\$12,500
IH 624 w/Ldr.....	\$3,000
IH 674D, new engine, clutch, painted.....	CALL
CIH 585, 4WD.....	\$14,500
JD 2355 4WD w/loader.....	\$18,000
Leyland 262.....	\$6,000
Case 1190, low hours, turf tires.....	\$6,000
Int. 504G, WF, Low Hrs.....	\$4,500
Case 530 w/Ldr, fresh engine overhaul.....	CALL
CIH 485, 4WD, cab, loader.....	\$16,500
AC WD45, B, C.....	CALL
IH B275.....	\$2,500
Ford 8N, 9N, F Cub Farmall M, TO20.....	CALL
Case 1845 diesel, skid loader.....	\$6,000
Case 1835C Skid Loader, Fresh Overhaul & Paint.....	\$11,500
CIH 2250 QT loader.....	\$3,250
JD 420.....	\$3,800
JD F930 mower & Snowblower.....	\$7,500
NH 492 haybine.....	\$6,500
NH 479.....	\$1,800
Hesston 5530 round baler.....	\$4,800
NI 3810 "V" Spreader.....	\$2,000
Int. 700 5 bottom plow.....	\$1,500
Brillion cultipacker.....	\$3,000
Brillion 15' transport packer.....	\$2,500
White 14' disc.....	\$2,500
NH #38 flail chopper.....	\$1,950
AG Tec 400 pc mist blower.....	\$8,000
Princeton Tree/Shrub Planter w/5 Shoes.....	\$2,000
Irafrance Irrigation System, Complete w/Traveller, Pump, Pipe, Etc., Ex. Cond.....	\$18,000
Round bale transport wagon, holds 6 blades, hyd. load & unload.....	\$2,000
(4) Tree & shrub digger heads, 20"-40".....	CALL
(2) Tree & Shrub planters.....	CALL
Rogers Lo-Boy trailer.....	\$3,500

LOG BARN Equipment

109 Quarry Dr., Bloomsburg, Pa. 17815
(717) 387-1779

Shop power unit w/40hp VM diesel, w/12 GPM hydraulic system, 5hp air compressor, 1-1/2" line shaft & bearings, mounted on 5'x8' steel frame. 7' 1 7 - 6 8 7 - 0 1 8 6 8am-8:15am

SICKLE MOWER, JD, 2ph, 7' cut, Model 8, extra knives, Pitman, etc., \$300; BRUSH HOG, JD, heavy duty 5', override clutch, 3ph, category 1&2, \$350. Both for \$550. Can deliver. 717/774-2803.



AC6080, Good Condition, New Clutch
\$7,900 \$8,500 obo
301/895-4056

AGCO FILTERS

- Our filters are 99% guts
- Designed for heavy duty applications
- Made to OEM specifications



MARSHALL MACHINERY, INC.

Rt. 652, Midway Between Indian Orchard and Beach Lake
5 Miles East of Honesdale
RR 4, Honesdale, PA 18431
(717) 729-7117
Hours: 8 AM to 5 PM Monday-Saturday
We Ship Parts Daily By UPS

AG INDUSTRIAL INC.

50 North Greenmont Road, Rising Sun, MD 21911
410-658-5568 800-442-5043



NH 855
Net Wrap, Round Baler, 1989
w/Bale Command



CASE 585 TRACTOR
1988 w/Alamo Boom Arm
Mower 5' Flail Cut

TRACTORS & LOADERS

- Ford TW15 tractor 4WD
- Ford 1520 23 HP 4WD
- Ford 841 Gas
- Ford 4630 55 HP
- Ford 5000 Tractor w/ Cab
- Ford 6610, 72 HP
- (2) Ford 6640S, 76 HP
- Ford 7710 2WD, 86 HP
- Ford 3000 Tractor
- Ford 957 Dexter Diesel Tractor
- Ford 655 TLB 4WD, Cab w/A/C
- Ford 345 C w/Loader
- Ford 445 w/Loader
- Ford 777 B Loader Attachment
- Ford A62 Loader
- Ford 8240 SLE Tractor
- NH 553 Skid Steer
- (3) NH L555 Deluxe Skid Steer
- (2) NH L785 Skid Steer
- AC 190 XT Tractor w/ Loader
- AC 5040 Tractor
- AC 6080 Tractor
- AC 6080 w/Loader
- Case 5120 2WD Tractor w/Cab
- Case 585 Tractor w/Alamo Rear Mount Boom Flail Mower
- Case 580B Tractor Loader
- Hyster 8000 lb Forklift
- Int. 656 Gas Tractor
- Int 986 Tractor w/ Loader
- IH 2424 2WD, Gas
- JD 2010 Gas Tractor
- JD 2440, 60 HP
- JD F912, Frit Cut Mower w/60" Deck
- Kubota G5200 w/48" Mower, 14 HP
- MF 2135 Gas, 32 HP
- Mitsubishi 650G Tractor w/ Front Blade
- Yale Forklift, 5000 Lb Lift

- NH 320 Baler w/58 Thrower
- NH 415 Discbine w/Swivel Hitch
- NH 469 Haybine
- NH 474 Haybine, 7' Cut
- NH 488 Haybine
- (2) NH 489 Haybine
- NH 650 Round Baler
- NH 770 Harvester 2RN & WPU
- NH 849 Round Baler
- NH 855 Round Baler w/Net Wrap
- NH 890 Harvester w/3RN Head
- NH 892 Harvester
- NH 30 Blower
- NH 939 N4 Corn Head
- NH 175 Bale Unwinder
- NH 144 Inverter
- Case Int. H Hyd Drive Rake
- Deutz 360 Rake
- Dump Chief Dump Wagon
- Gehl Forage Box
- Hesston 1010 Hydroswing Haybine
- Hesston 1014 Hydroswing Haybine
- Int. Forage Box
- MC Rotary Scythe
- NI 404 Wheel Rake
- NI 402 Rake

MISCELLANEOUS

- BH 257 7' Rotary Mower
- BH 2615 15' Rotary Mower
- BH 307 7' Rotary Mower
- BH 109 Rotary Mower
- BH SQ84 Rotary Mower
- Case Int. 475 12' Rock Flex Disc
- Case Int 3900 H Rock Flex, 23 1/2" Disc
- Cub 4 1/2' Pull Type Disc
- Brillion 12' Packer w/ (2) 5' Pups
- JD 3 Bottom Plow
- Ford 4 Row Cultivator
- JD 4 Bottom Plow
- JD 210 14' Disc
- JD 494 4R Corn Planter
- NH 520 Spreader w/Endgate
- Ber-Vac 24' Field Cultivator
- Woods RM90 Finish Mower

HAY & FORAGE

- 14' Flatbed Wagon w/30" Sides
- NH 1495 Haybine, Gas, Hydro
- NH 1034 Bale Wagon
- NH 256 Rake w/Rubber Teeth
- NH 258 Rake
- (2) NH 276 Baler
- NH 3RN w/Auger Base & Hay Head
- NH 310 Baler
- NH 70 Thrower



NH 415 DISCBINE
1994 Swivel Hitch, 1000 PTO,
Real Sharp

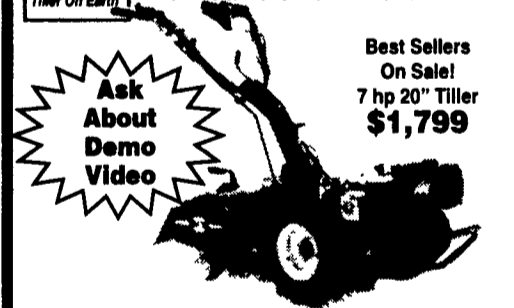


GEHL MODEL BU940
Forage Box w/10 ton Tandem Gear

BCS SPRING SALE DAYS

Save Up To \$500!

90 DAYS SAME AS CASH FINANCING AVAILABLE



Ask About Demo Video

Best Sellers
On Sale!
7 hp 20" Tiller
\$1,799

CHECK OUT THESE FEATURES:

- No Time-Limit Warranty On All-Gear-Drive Transmission
- No Bolts or Chains
- 8 Models From 5 to 14 Horsepower
- Recoil or Electric Start
- Quick-Change Handle Positions
- 50% Higher Tine Speed Than The Competition
- Adjustable Tiller Width from 10"-30"

BUY A TILLER NOW & SAVE ON ATTACHMENTS!



Specials on in stock units only - Limited Supply -

20 Years of Professional Sales & Service
717-738-4215

WES STAUFFER ENGINES & EQUIPMENT

Mon. & Wed. 8-5:30
Tues., Thur., Fri. 8-8 Sat. 8-3
23 Pleasant Valley Rd
East of Ephrata off Rt. 322