

Leinbach's Shippensburg Produce Auction

Shippensburg, PA
Average Prices Of #1 Produce
May 15 & 20
Price Differences are Quality, Size or Days
Open 10 a.m.

Report Supplied by Auction
FLOWERS BY THE FLAT, ALL VARIETIES 4.50-9.50, SMALL POTS, GERANIUMS AND NONSTOP BEGONIAS, .75-1.75, LARGE POTS 1.75-3.50. HANGING BASKETS 8-10", ALL VARIETIES 4.00-9.50. PLANTERS: SM. TO LARGE 3.00-14.50. SHRUBS: SMALL 1.00-4.50, LARGE 3.00-10.50; AZALEAS SM. TO LARGE 1.00-7.25; RHODODENDRONS 6.00-10.50. TREES: FLOWERING 5.00-12.00. VEGETABLE PLANTS: BY THE FLAT 4.50-10.00. TOMATOES BY THE POT: .50-1.50 EACH. ASPARAGUS: 1.25-1.65 LB. RHUBARB: .50-.90 LB. SPRING ONIONS: .35-.50 BUNCH. RADISHES: .40-.45 BUNCH. NEXT WEEK'S SALE DAYS TUES. AND THURS. AT 10 A.M.

Kirkwood Ag Auction Produce

Kirkwood, PA
May 21
10:00 A.M.
Report Supplied by Auction
ASPARAGUS: 1.00-1.30 12 OZ. RHUBARB: .65-.75 BUNCH. SPRING ONIONS: 9.00 40 CT. STRAWBERRIES: 9.60-17.00 FLAT. TOMATOES: 8.50-10.50 25 LBS. ASSORTED VEGETABLE PLANTS, BY THE FLAT 1.00-6.00 FLAT; TOMATOES 6.00-7.00, SMALL POTTED .30 EACH. ASSORTED PERENNIALS POTTED: .55-1.50 EACH. ASSORTED ANNUALS: FLATS 2.00-6.00, POTS .25-2.25. GERANIUMS: BY THE POT, 1.00-1.40. ASSORTED HOUSE PLANTS: BY THE POT, 3.75-4.50. HANGING BASKETS: 4.00-10.50. PLANTERS: 3.50-7.50 EACH. TREES: CYPRESS 7.00; PINE 6.50-16.00; ALBERTA SPRUCE 17.00; DOGWOOD 16.00; JAPANESE MAPLE 19.00. SHRUBS: RHODODENDRONS 6.00-11.50. NEXT WEEK'S SALE DAY IS WED. AT 10 A.M.

Cumberland Valley Produce Auction

Shippensburg, Pa.
May 13, 15, 16
Report Supplied by Auction
ASPARAGUS BUNCH: .20-1.70 BUNCH. CABBAGE PLANTS: 2.00. RADISHES: .15-.20 BUNCH. RHUBARB: .30 BUNCH. IMPATIENS: BASKET 3.50, FLAT 2.00-8.75, POT .25-1.60. PETUNIAS: BASKET 5.00-11.75, FLAT 4.00-8.50, POT .30-.70. VEGETABLE PLANTS: FLAT 4.00-8.00. FLOWERS: FLATS, ALYSSUM 2.00-7.70, SNAPDRAGON 5.00-8.00, MARI-GOLD 2.50-8.00, BEGONIA 3.00-9.00; POTS, DAHLIAS .70-2.10, GERANIUMS .80-2.30, BEGONIA .60-1.40; BASKETS, GERANIUMS 3.00-8.00, FUSCHIA 5.50-9.00, BEGONIA 3.00-7.00. SALE DAYS HELD TUES., THURS., FRI., 9:30 A.M.

Morrison Cove Produce Auction

Roaring Spring, PA
May 20 & 22, 1997
Report Supplied by Auction
FLOWERS: FLAT, IMPATIENS 5.00-6.25, PETUNIAS 4.50-6.50, MARI-

GOLDS 5.00-7.25, SALVIA 5.00-6.75, BEGONIA 4.75-6.75, SNAPDRAGONS 4.75-5.75, ALYSSUM 2.50-6.50, BY THE POT, .50-2.50. HANGING BASKETS: 3.25-10.00. COMBINATION BOWLS: 6.00-9.50. VEGETABLE PLANTS: BY THE FLAT, TOMATOES 3.75-5.00, PEPPERS 5.50-6.00; POTTED, TOMATOES 3.50-4.00. ASPARAGUS: 1.00 BUNCH. ONIONS: .30-.40 BUNCH. RHUBARB: .40-.50 BUNCH. TOMATOES: GREENHOUSE 6.50-8.00 10 LBS, HYDROPONIC 12.00-15.00 10 LBS. SALE DAYS TUES. AND THURS. AT 10 A.M.

Buffalo Valley Produce Auction

Mifflinburg, PA
Week of May 20, 1997
Report Supplied by Auction
FLOWERS: FLATS 6.00-8.50; POTS, DALHIA, GERBERA DAISY, NEW GUINEA NON-STOP BEGONIAS 5.00-4.00. TREES, SHADE AND FRUIT TREES: 7.50-25.00. PERENNIALS: .50-2.50. ASPARAGUS: 1.00-2.00 LB. RHUBARB: .50-1.00 LB. AZALEAS: 2.00-6.00. AUCTION DAYS TUES. AND THURS. AT 10 A.M.

Valley Stockyards

Athens, Pa.
May 19, 1997
Report Supplied by Auction
HOLSTEIN HEIFER CALVES TO 141.00. VEAL CALVES, NONE. VEALER BULL CALVES TO 135.00. SLAUGHTER CALVES 44.00 AND DOWN. GRASSERS AND FEEDERS 20.00-63.50. LAMBS TO 135.00. SHEEP 23.00-42.00. HOGS, 200-250, 49.50-55.00. SOWS TO 42.50. BOARS TO 40.00. PIGS NONE. HEIFERS TO 49.00. STEERS TO 47.50. STEERS, FEEDER, TO 70.50. BULLS TO 49.50. COWS, GOOD, 37.00-45.00, TOP 50.00. COWS, MEDIUM, 31.00-36.50. COWS, POOR OR SMALL, 30.25 AND DOWN. HORSES TO 800.00. PONIES NONE. GOATS 40.00-72.50.

North Jersey Livestock

Hackettstown, NJ
Report Supplied by Auction
Tuesday, May 20, 1997
CALVES 24-1.25
COWS 29%-.45.
EASY COWS .20-.42%
FEEDERS 300-600 LBS. .10-.91.
HEIFERS .30-.64.
BULLS .37%-.63.
STEERS .35-.67.
HOGS .42-.56.
ROASTING PIGS EA. 12.00-25.00.
SOWS .25-.43.
SHEEP .16-.64.
LAMBS EACH 33.00-70.00.
LAMBS PER LB. .12-1.56.
GOATS EACH 30.00-180.00.
KIDS EACH 9.00-58.00.
HIDES EACH 36.00.
TOTAL: 940.

New Holland Horses

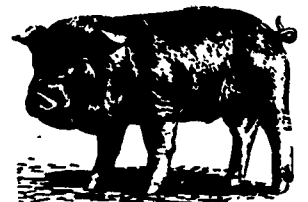
New Holland Sales Stables
New Holland, PA
Monday, May 19, 1997
Report Supplied by Auction
314 HEAD. RIDING HORSE MARKET STEADY; KILLERS LOWER. WORK 735.00-985.00. DRIVING 485.00-1100.00. RIDING 560.00-925.00. BETTER RIDING 1000.00-1750.00, 1 AT 2500.00. REGISTERED RIDING 660.00-1475.00, 2 AT 2200.00 AND 2950.00. KILLERS, 4 HEAD 1010.00-1040.00. HEAVYWEIGHTS 740.00-910.00. LIGHTWEIGHTS 410.00-600.00. PONIES 140.00-435.00. LARGE PONIES 500.00-585.00, 2 AT 650.00 AND 720.00. COLTS 190.00-485.00.

Special Sale Work, Driving Horses, Mules, Ponies

New Holland Sales Stables
New Holland, PA
Saturday, May 17, 1997
Report Supplied by Auction
233 HEAD. DRIVING HORSES: OHIO 725.00-4100.00; OHIO 850.00-3400.00; KENTUCKY 725.00-2400.00; NEW YORK: 775.00-1500.00; NEW YORK: 875.00-1350.00; PA.: 750.00-2300.00; PA.: 810.00-1450.00. NEW JERSEY: 800.00-1100.00. LOCAL DRIVING: 700.00-2200.00. WORK HORSES, LOCAL PAIRS 1850.00-3350.00, SINGLES 800.00-1625.00; MULES, PAIRS 2850.00-3650.00, SINGLES 675.00-900.00; PONIES: 550.00-875.00.

New Wilmington Livestock

NEW WILMINGTON, PA
MAY 19, 1997
CATTLE 156 [PDA] Compared with last week's sale cows steady to 100 higher
HOLSTEINS one High Choice and Prime 1560 lbs @ 63.75, Standard and Select 42.75-51.75
HEIFERS few Standard 44.00-50.00
COWS Breaking Utility and Commercial 38.00-42.75, one 45.00, Cutter and Boning Utility 32.25-40.00, few Canner and Low Cutter 25.00-30.75 Shells down to 17.00
BULLOCKS couple Select 1315/1375 lbs @ 45.00
BULLS few Yield Grade No 1 1550/2125 lbs 42.00 43.75
FEEDER CATTLE STEERS few Medium Frame No 1 445/420 lbs 74.00, HEIFERS Medium Frame No 1 & 2 275/750 lbs 53.50-66.50, Large Frame No 2 390/830 lbs 38.00 55.00, BULLS few Medium Frame No 2 375/500 lbs 69.00-79.00, few Large Frame No 2 500/975 lbs 39.00-54.50, few Medium Frame No 2 365/600 lbs 53.50-68.00
CALVES 168 VEALERS few Choice 200/230 lbs 89.00-103.00, few Good 150/180 lbs 80.00-90.00, Standard and Good 70/110 lbs 35.00-47.50, Utility 50/75 lbs 10.00-34.00
FARM CALVES No 1 Holstein bulls 90/120 lbs 83.00-102.00, No 2 90/115 lbs 49.00-85.00, No 2 Holstein heifers 75/105 lbs 50.00-132.50 few beef cross bulls and heifers 75/105 lbs 50.00-132.50
HOGS 332 Barrows and gilts 1.00 to 1.50 lower
BARROWS AND GILTS US 1 2 210/260 lbs 59.00-61.85, few to 62.50, US 1-3 220/270 lbs 57.10-58.85, US 2 3 210/275 lbs 56.85 57.85
SOWS few US 1 3 300/410 lbs 43.75-49.50, 500/650 lbs 48.50-52.75
BOARS few 180/230 lbs 37.50-44.50, few 250/575 lbs 42.50-43.75
FEEDER PIGS 22 US 1-3 15/35 lbs 35.00-44.00 — per head
SHEEP 112 SLAUGHTER LAMBS High Choice and Prime 95/120 lbs 110.00-112.00, Choice 40/110 lbs 102.50-120.00, few to 155.00, Good and Choice 30/75 lbs 85.00-102.00
SLAUGHTER SHEEP 25.00-50.00
GOATS 18 Medium and Large 64.00-70.00, Large Kids 27.50-36.00, Small 15.00-20.00 — per head



Philadelphia Potato

PHILADELPHIA
MAY 22, 1997
ONIONS AND POTATOES
---ONIONS DRY: MARKET ABOUT STEADY US#1 OR GENERALLY GOOD QUAL AND COND UNLESS OTHERWISE STATED. Yellow Globe Type NY 50 lb sks med 6.00-7.00 Red NY 25 lb sks lge 8.00 NEW CROP Yellow Granex GA 50 lb ctns jbo 12.00-14.00 mostly 12.00-13.00 Grano AZ 50 lb sks jbo 9.50-10.00 CA 50 lb sks col 11.00-12.00 jbo 9.00-10.00 mostly 9.50-10.00 some 10.50 few 11.00 fr cond 8.50 TX 50 lb sks col fr cond 8.00 jbo 9.50 White CA 50 lb sks jbo 16.00-17.00 mostly 16.00 MX 50 lb sks jbo 15.50 Red AZ 25 lb sks jbo 14.00 CA 40 lb ctns jbo 16.00 med 13.50 25 lb sks jbo 11.00-13.00 few 10.00 YBrj rja 25 lb sks jbo 12.50
---POTATOES: MARKET A25 Burbank ID bld 10 5-lb sks non sz A 6.75-7.50 mostly 7.00 50 lb ctns 50s 8.00-9.00 mostly 9.00 60s 8.00-9.00 mostly 9.00 70s 7.50-9.00 mostly 8.50-9.00 80s 8.00-9.00 mostly 8.00-8.50 some 7.50 90s 7.50-8.50 mostly 7.50-8.00 some 7.00 100s 7.00-8.00 mostly 7.00-7.50 some 6.50 120s 7.00 Round White CD Prince Edward Island CDOne 50 lb sks 5.50 lge 6.00 NY 50 lb sks lge 5.50-6.00 NEW CROP Round Red AZ 50 lb ctns 12.00 sz B 15.00 FL bld 10 5-lb sks 11.00 50 lb sks 8.00-9.00 some 10.00-12.00 sz B 15.00-16.00 Round White FL bld 5 10-lb sks 14.75 bld 10 5-lb sks 15.75 50 lb sks 10.00-12.00 mostly 12.00 some 12.50 fr qual 7.50-8.00 sz B 9.00



A LESSON WELL LEARNED... LANCASTER FARMING'S CLASSIFIED ADS GET RESULTS!

HAY, STRAW & GRAIN SALE

Every Thursday at 12 NOON

Vintage Sales Stables, Inc.
(Rt. 30, 10 miles east of Lancaster in Paradise, PA)

For info. (717) 442-4181 bus. (610) 458-8518 home

LEBANON VALLEY LIVESTOCK MARKET, INC.

1 mile East of Frederickburg along Rt. 22
Every Tues. and Fri. (Starting Jan. 3) at 1:30 pm
Cattle Sale
2nd & 4th Tues.
Special Fed Cattle Sale
Dave Brubaker
(717) 865-2881

TANCO AUTOWRAP

THE WRAPPER THAT WRAPS BALES OTHERS WON'T

A complete range of Round, Square & Rectangular Wrappers.



Patented advantages like the unique "Deep Cradle" continuous full width belt, and fully supported turntable where four polyurethane wheels provide Tanco's renowned even and balanced operation, even with overweight and misshapen bales. Quality wrapping and quality machines that has made Tanco among the World's leading manufacturers.

Why spend your dollars on a "job shop" type machine that requires a large tractor, needs near perfect bales to work properly, and is scary to see in operation. Don't forget: "Penny wise, pound foolish". It takes a quality product to do quality work.

For further information on Tanco bale wrappers, silage wrapping, and your nearest dealer, contact:



CUMMINGS and BRICKER, Inc. Wholesale Distributors

100-120 Lehigh Ave. • P.O. Box 928
Batavia, New York 14021-0928
716/343-5411
Serving Farmers Through Farm Equipment Dealers Since 1961

100 Stover Drive
Carlisle, PA 17013
717/249-6720

QUALITY LINE OF LOADER ATTACHMENTS
Made To Fit More Than 200 Makes & Models

TODD FARM EQUIP. INC.
Hagerstown, MD
301-791-0122
Fax 301-791-2118