

1991 Featherlite aluminum trailer, 20', \$6490. Gettysburg area. 717-642-6187 301-827-5253.

(2) 900x20 tires, bias, \$150/pr, like new; 900x20 radial tires, \$75/pr. 717-394-0975

(7) Aluminum dump Body (1)-18', (1)-17' high sides, \$3500/ea. Reefer box 20' diesel unit, good condition, \$2000. 610-944-9871 after 6PM.

3208 Cat, 210hp, complete, \$2600 no core; 6V82 Detroit, complete in frame w/radiator, \$1250; Eaton 23,000 rear on air susp, cut off, \$1200; (2) 900x20 General steering on Dayton, \$150; (3) 900x20 lug on Dayton, \$150. 814/942-3821.

38' Fruehauf water tanker, tandem axle. 1978 Kenworth, 180" WB, double bunk, 400 Cummins, 13 speed, jake brake, excellent condition. 1976 1/2 ton Dodge pickup, 6cyl. stick. (610)779-3284.

Ford F800 stake body dump truck /sale, \$3,500 OBO. Lancaster. (717)394-6343.

'65 Montone dump trailer, 32', 76" sides w/rollover tarp and bows, tubeless tires, only used for grain hauling, good cond. (301)898-9169

6V53 diesel, totally rebuilt down to the starter, \$3,000. (609)825-4216

'76 GMC tandem Detroit diesel engine, runs good, \$4000 OBO. 717-739-4650

'79 White Roadboss, 10-wheel dump, 14' steel, double framed, 60,000 GVW, rebuilt 350 Cummins engine, Jake brake, 10-speed Roadranger, mechanically good, needs paint, inspected, \$16,500. 717-754-3009

'83 Isuzu 4x4 diesel pickup, mechanically good, 84,000 miles, \$500. (717)445-5438.

'85 GMC tri-axle, 6V92 de-120,000 mi., 15' steel body, good tires, new clutch, \$25,000/obo. (610)689-4988

'86 Dodge Royale SE B150 short whl base, 5 pass., 318 auto, PS, PB, air, AM-FM cassette, good condition, \$3,400. 717-733-2873

'88 Chevy Beauville, 12 passenger van, 350 FI, auto, PS, PB, PW, PDL, cruise, tilt, dual air, AM-FM cassette, privacy glass, 69,000 miles, red & white, excellent condition, \$8,975. 717-733-2873

'88 Int. Eagle, w/42" bunk, all alum. buds, 444 Cummins w/Jake, 13 spd trans w/overdrive and 95 Tmpt grain hopper w/alum. buds, selling as unit. A-1 cond. (301)898-9169

'89 Chevy Silverado 1500 Suburban, 350 FI, auto, PB, PW, PDL, cruise, tilt, air, AM-FM cassette, 63,000 one owner miles, new radials, excellent condition, \$10,900. 717-733-2873

'89 Ford Super duty, 14,500 GVW, 5 speed, 351, V8, gas, 10' flatbed w/tool boxes, 89,000 miles, \$8900. 717-859-3168

'89 GMC low pro 14' dump truck, diesel w/6 speed, 26,000 miles, 20,000 GVWR. 717-836-3387 evenings.

'90 Chevy Scottsdale 2500, 3/4 ton, 2WD, 350 EFI, auto, PS, PB, AM-FM cassette, 46,000 miles, burgundy & silver, \$10,500. 717-733-2873

'90 Dodge B350, 15 passenger, 360 auto, PS, PB, air, AM-FM cassette, running boards, latest inspection, high miles, \$4,600. 717-733-2873

'91 Ford XL E350 club wagon, 12 passenger, 351 EFI, auto, PS, PB, PW, PDL, cruise, tilt, dual air, privacy glass, AM-FM, 63,000 one owner miles, excellent condition, \$10,500. 717-733-2873

## Used Truck Bodies



Installed on NEW or Old Truck  
"Makes your Old Truck Look Like NEW!"  
• Dry Van Bodies 10' to 24' • Reefer Bodies  
• Flat Bodies  
(Completely Refurnished Bodies in Most Cases  
- Same Day Service!)

Phone 717-898-0683  
**CHARTER ENTERPRISES, LTD.**  
270 Hostetter Road, Manheim, Pa

## LESHER Mack SALES & SERVICE

27th & Cumberland St. Lebanon, Pa  
Route 422 West Lebanon, Pa 17042



(6) 1993 Mack CH 613 E7-350 V-Mac, RTX 14709H, 12 Frt., 38 Rear, Air Ride, 4:11 Ratio, 192" WB, St-Disc Wheels, 42" Sleeper



1990 Mack R Model E6-350, 4VH, Out Of Frame Overhaul At 397,698, Trans: Fuller RTF 11609A 9-Speed, Rears. Mack Camel Back, 36,000 Lbs., 3.65 Ratio; 200" Wheelbase, 36" Sleeper Box w/Air Ride, Sliding 5th Wheel, 11-R-22.5 Alum. Budd Steering, 11-R-22.5 Spoke Drive Axles, 556,500 Miles.

717-273-4535

## PULLTARPS THE ONE MINUTE TARP SYSTEM MFG

### Truck Covers



This is the new PULLTARPS System. Lighter yet stronger than the Original design.

And it's smaller, easier to install and better looking too. This new System comes with an "Exclusive External Spring Tensioner." You won't tarp your loads the old fashioned way every again!

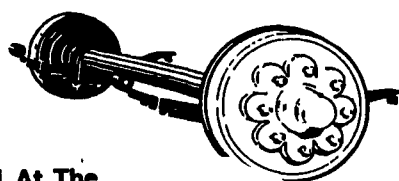
The One Minute Tarp System

## See Us For Your Axle Replacement Parts and Complete Axle Assemblies

2,000-22,500 Lb. Axles & Suspensions  
Metal Trailer Components  
Lights & Electrical Supplies  
Brakes, Tires & Wheels

Jacks, Couplers & Hitches  
Hardwood Accessories & Much More

Ask For Dean



#1 At The Right Price

Try Binkley & Hurst For Many Trailer Replacement Parts In Stock!  
Check Our Prices On Receiver Hitches!  
Buy Where The Quality Is

## BINKLEY & HURST BROS. INC.

133 Rothsville Station Rd. (717) 628-4708  
P.O. Box 0396 1-800-414-4708  
LMBZ, PA 17643-0396 FAX 717-628-0888



1989 Dodge Ram, excellent condition, 42,000 miles, 5-spd, \$5800. 717/765-0365, 717/334-4619.

1990 Dodge Pickup, Cummins diesel, 5-spd, two tone gray, nice. 717/725-2354.

24' alum. dump trailer, Parker, decent shape, \$6,000. (610)381-2911

28' GN stock trailer, excellent condition, \$2850 OBO. Call daytime Mike 410-557-9504; evenings 410-692-5117.

Lancaster Farming, Saturday, May 17, 1997-D25

1996 Int. 4700 22' Jerr-dan rollback, DT466, 7 speed, 25,200 GVW. 1979 F700 Ford 20' Grove rollback. 1979 Chevy 4x4, twin line wheel lift wrecker. Nussbaum's (717)684-0189.

28' Gooseneck trailer, gross 18,000, side rails and gate, \$1200; Axle from 40' trailer, 15" Dayton air brakes, \$500. 717/535-6389.

## Twin Pine Auto Sales

PLEASE CHECK OUR PRICES BEFORE YOU BUY



96 CHEV K3500 4x4 CREW CAB DUALY  
6.5L Diesel, AT, A/C, Silverado, CD Player, 39,000 Miles, Like New, Champagne \$26,900



95 FORD F150 4x4 EXT. CAB, FLARESIDE  
302 V8, 5-Spd., A/C, Loaded, 46,000 Miles, Black \$19,900



94 GMC K2500 EXT. CAB, LONG BED  
350 V8, AT, A/C, Loaded, Blue, 40,000 Miles (4-3/4 Ton Trucks In Stock) \$19,500



96 GMC JIMMY SLE 4X4  
4 Door, 4.3 V6, Loaded, CD Player, Leather Power Seats, 12,000 Miles, Dark Green, Like New \$22,900



93 JEEP GRAND CHEROKEE LAREDO 4X4  
6 Cyl., AT, A/C, Loaded, 59,000 Miles, Driftwood Color (5-Grand Cherokee's In Stock) \$15,900



96 CHEV C1500 4x2 EXT. CAB, LONG BED  
V8, 5 Spd., A/C, PS, PB, PL, TC, Stereo Cass., 12,000 Miles, Dark Green \$16,900



95 ACURA INTEGRA GSR  
V-Tech, 5-Spd., A/C, Loaded, Power Moon Roof, 7,000 Miles, Black w/Black Leather Int., Like New \$17,900



95 VOLKSWAGEN JETTA GLS, 4 DOOR  
4 Cyl., 5 Spd., A/C, Loaded, 12,000 Miles, Red \$14,900



95 BUICK LESABRE CUSTOM  
4.3 V6, AT, A/C, Loaded, Stereo Cass., 21,000 Miles, Solid Black w/Gray Int., Power Seat \$15,900



'91 F-150 Ex Cab XLT  
4WD, Air, High Miles, Nice \$7,995



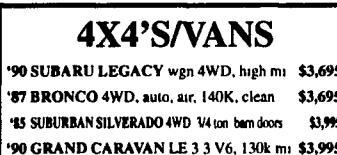
Mon-Sat 10-8 CALL FOR DIRECTIONS  
(717) 945-4X4's (4947) or 945-7461  
3 YEAR/45,000 MILE WARRANTY AVAILABLE ON MOST VEHICLES



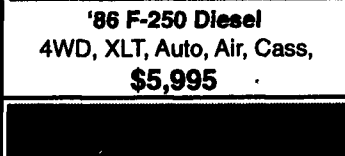
'91 F-250 Diesel  
4WD, Air, 105K mi, clean \$9,995



'86 F-250 Diesel  
4WD, XLT, Auto, Air, Cass, \$5,995



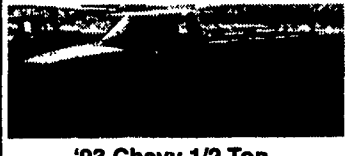
- '90 SUBARU LEGACY wgn 4WD, high mi \$3,695
- '87 BRONCO 4WD, auto, air, 140K, clean \$3,695
- '85 SUBURBAN SILVERADO 4WD 14 ton barn doors \$3,995
- '90 GRAND CARAVAN LE 3 3 V6, 130k mi \$3,995
- '90 GRAND CARAVAN LE 3 3 V6, 120k \$3,995
- '93 SUBARU LOYALE wgn 4WD, high mi \$4,295
- '88 CHEROKEE Laredo, 4WD, air, 114K \$4,659
- '88 BLAZER SILVERADO 4WD, air \$4,695
- '87 WRANGLER hardtop, 4WD, 6-cyl., 5 spd \$4,995
- '88 DODGE CONVERSION VAN, TV indge, very clean \$4,995
- '90 WRANGLER, soft top, 4WD, 4 cyl \$4,995
- '94 GEO TRACKER 4WD, 5-spd., hi mi \$4,995
- '90 GRAND CARAVAN LE, 1 3 V6, 79K \$5,695
- '92 AEROSTAR extended van 4WD, high mi \$5,995
- '88 SUBURBAN Silverado, 4WD, 8-pass \$5,995
- '89 JEEP CHEROKEE LTD., 100K, 4WD \$5,995
- '90 BLAZER Silverado 4WD, 4 sp, air, cass \$5,995
- '89 JEEP WRANGLER, 6 cyl, auto, 4WD hard top \$5,995
- '92 S10 BLAZER 4WD, 4 3 V6 127K clean \$5,695
- '89 BLAZER SILVERADO 4WD, 90K Mi Sharp \$5,995
- '92 WRANGLER hardtop, 4WD, alloy whls \$6,495
- '91 S10 BLAZER 4WD, 4 3, 4 dr 101K, nice \$6,495
- '90 BRONCO Eddie Bauer, 4WD, auto red/tan \$6,495
- '90 JEEP CHEROKEE LTD 4WD, Leather \$6,995
- '91 FORD EXPLORER XLT 4WD, XLT nice \$6,995
- '92 GRAND CARAVAN LE 4WD, White \$6,995
- '91 JEEP CHEROKEE sport 4dr 4WD 74k \$6,995
- '93 S10 BLAZER4 dr 4WD, 1 owner, hi mi \$7,995
- '92 S10 BLAZER 4-dr, 4WD, 70K blue \$7,995
- '92 FORD 22 pass tour bus TV/VCR high miles \$7,995
- '94 GRAND CHEROKEE Laredo 4WD 90K \$11,995



'91 F-250 Diesel  
Ex. Cab, 2WD, 5 spd, XL, air, 122K \$6,995



'92 S-10 Ex Cab  
4WD, 4.3 V6, Air, Cass, High Miles \$5,995

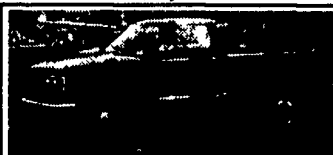


'93 Chevy 1/2 Ton  
4WD, Auto, High Miles, Red, \$6,995

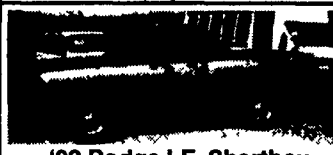


'89 Dodge Diesel  
Dually, utility body, 4WD, 85K \$9,995

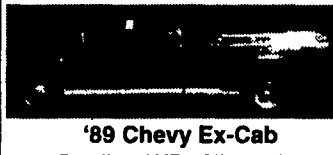
- ### TRUCKS
- '86 F150 SHORT BOX 4WD nice \$3,695
  - '85 F-150 short box stepside, 4x4 6 cyl \$3,995
  - '90 CHEVY S-10, ext. cab Baja, humi., 4x4 \$3,995
  - '88 F150 4WD 4-Spd maroon/whit clean \$4,295
  - '88 F150 XLT 4WD v8, auto, air, hi mi clean \$4,995
  - '86 F-350, 70K, Clean, 4WD \$4,995
  - '88 CHEVY, 1/2 Ton, 4WD, Stuck, 80K \$4,995
  - '90 SCOTTSDALE 4WD air, hi mi, clean \$6,995
  - '92 CHEVY short box, Silverado \$7,995
  - '91 F150 XLT 4WD, V8, auto, 69K, air \$8,995
  - '89 F-350, dsl dually, 4WD \$10,995



'89 Chevy Shortbox  
4WD, Air, 84,000 Miles \$6,995



'92 Dodge LE Shortbox  
4WD, Air, High Miles, Sharp \$7,995



'89 Chevy Ex-Cab  
Dually, 4WD, Silverado, 454, V-8 \$12,995



'91 F-250 Ex Cab  
4WD, V8, Auto, Air, Cass, Clean \$9,995



'91 Toyota  
4WD, 5 spd, Air, White, sharp \$5,995

20 Miles North of Scranton