

Friend's Stockyard Inc.

Accident, Md. 21520
Report Supplied by Auction
May 5, 1997

STOCK BULLS AND STEERS (200-500 LBS.) 50.00-86.50.

STOCK HEIFERS: 45.00-71.00.
SLAUGHTER STEERS: GOOD TO CHOICE 64.00-68.10; MEDIUM TO GOOD 57.00-63.50, HEAVY CHOICE OVER 1450 LB. 55.00-65.50.

HOLSTEIN STEERS: HEAVY CHOICE 40.00-53.50, LIGHT 34.00-44.00.

SLAUGHTER HEIFERS: GOOD TO CHOICE 62.50-68.60; MEDIUM TO GOOD 50.00-62.00.

BULLS: HEAVY 41.00-53.00, LIGHT 35.00-47.00.

COWS: UTILITY (HOLSTEIN) 35.00-44.00, COMMERCIAL TO GOOD 28.00-34.50, CULL COWS 28.00 AND DOWN.

VEALS: GOOD TO CHOICE 40.00-70.00, MEDIUM TO GOOD 20.00-44.00.

BOB CALVES: 25.00 AND DOWN. HOLSTEIN BULL CALVES — RETURN TO FARM (90 TO 120 LB.)- 60.00-110.00.

HOLSTEIN HEIFER CALVES — RETURN TO FARM (90 TO 120 LB.)- UP TO 155.00.

BEEF CROSS CALVES — RETURN TO FARM UP TO 80.00.

HOGS: TOP QUALITY UP TO 57.00, HEAVY UP TO 54.50, LIGHT 30.00-45.00.

SOWS: 35.00-44.50.

MALE HOGS: 24.00-38.00.

LAMBS, LIGHT, 90.00-100.00; FEEDER LAMBS, NONE AVAILABLE.

SHEEP: 15.00-42.00.

LIVESTOCK PRICES ARE ALL GIVEN PER HUNDRED WEIGHT!

St. Louis Cattle, Hogs

SPRINGFIELD, IL
MAY 5, 1997

SLAUGHTER CATTLE AUCTION: 300 head, last week 275, and last year 500 head. Compared with last week, slaughter steers and heifers mostly 2.00 higher, except holstein steers 1.00 higher. Slaughter cows firm to 1.00 higher. Slaughter bulls fully steady. Supply mainly Choice and mixed Select and Choice slaughter steers and heifers. Moderate supply of holstein steers. Around 20% cows.

SLAUGHTER STEERS: Choice 2-4 1025-1450 lbs. 64.00-66.00; 2-3 1075-1475 lbs. 66.00-67.00; Yield Grade 2 and Black and Black Baldies 2-4 1175-1350 lbs. 67.00-68.25, package mixed steers and heifers 1460 lbs. at 68.75; Select and Choice 2-3 950-1250 lbs. 61.00-64.00; Select 2-3 900-1300 lbs. 58.00-61.00. Holstein Steers: Choice 2-3 1350-1800 lbs. 62.00-65.00, few up to 66.00; Select and Choice 2-3 1200-1400 lbs. 58.00-62.00; Select 2-3 1125-1300 lbs. 52.00-58.00.

SLAUGHTER HEIFERS: Choice 2-4 950-1225 lbs. 64.00-66.00; 2-3 1025-1250 lbs. 66.00-67.00; Yield Grade 2 and Black and Black Baldies 2-4 1100-1300 lbs. 67.00-68.00; Select and Choice 2-3 900-1150 lbs. 61.00-64.00; Select 2-3 900-1100 lbs. 58.00-61.00.

SLAUGHTER COWS: Cutter, Boning and Breaking Utility 1-4 38.00-41.00; High Yielding 41.00-43.00; High Yielding Boning and Breaking Utility 2-3 42.00-45.00, few up to 46.00; Canner and Low Cutter 1-2 35.00-38.00; Shelly Canner 1-2 30.00-35.00. Low Yielding 700-800 lbs. 25.00-30.00.

BULLS: Yield Grade 1-2 1125-2550 lbs. 42.00-46.00; Couple Gaunt Yield Grade 1 1450-1800 lbs. 48.00-49.50.

Morrison Cove Livestock

Martinsburg, Pa.
May 5, 1997

Report supplied by auction

CATTLE 245. STEERS CHOICE 65.00-70.00; GOOD 61.00-64.00. HEIFERS: CHOICE 64.00-67.00; GOOD 58.00-61.00.

COWS: UTILITY & COMMERCIAL 36.00-47.00; CANNER & LOW CUTTER 22.00-35.00.

BULLOCKS: GOOD & CHOICE 43.00-55.00.

BULLS: YIELD GRADE NO. 1 40.00-55.00.

FEEDER CATTLE: STEERS 45.00-62.00; BULLS 42.00-60.00; HEIFERS 35.00-55.00.

CALVES 104. PRIME, NO MKT. TEST; CHOICE 75.00-85.00; GOOD 52.00-63.00; STANDARD 15.00-40.00; HOLSTEIN BULLS 90-130 LBS. 75.00-100.00; HOLSTEIN HEIFERS 90-130 LBS. 80.00-120.00.

HOGS: 206. US NO. 1-2 56.00-57.00; US NO. 1-3 52.00-55.00.

SOWS: US NO. 1-3 40.00-48.00.

BOARS: 37.00-41.00.

FEEDER PIGS: 44 HEAD. US#1&3 20-50 LBS. 26.00-49.00.

SHEEP: 41 HEAD. CHOICE LAMBS 120.00-130.00; GOOD LAMBS 90.00-110.00; SLAUGHTER EWES 27.00-38.00.

GOATS: 42.00-90.00.

8 LOADS OF HAY. ALFALFA 122.50-167.50 PER TON; GRASS 120.00-150.00 PER TON; MIXED 85.00-89.00 PER TON.

2LOADS OF STRAW 75.00-99.00 PER TON.

Shenandoah Valley Livestock

Harrisonburg, Va.
May 3, 1997

Report supplied by auction

300-499 LB. STEERS 50.00-95.50, HEIFERS 50.00-75.00, BULLS 50.00-80.00; 500-699 LB. STEERS 48.00-90.00, HEIFERS 45.00-70.00, BULLS 45.00-70.00; 700-1000 LB. STEERS 45.00-70.00, HEIFERS 40.00-63.00, BULLS 38.00-48.00.

HOLSTEIN STEERS 3-499 74.00; 5-699 59.00; 7-1100 52.50.

STOCK COWS BEEF 300.00-675.00; BABY CALVES 20.00-88.00; SLAUGHTER COWS 33.00-44.00; SLAUGHTER BULLS 25.00-48.75.

SLAUGHTER LAMBS CHOICE AND PRIME YG#1-3 BLUE O 114.50-121.50 LIGHT; GOOD AND FEW CHOICE YG#1-2 RED O 121.00.

FEEDER LAMBS MED. AND LGE. 1&2 70-84 LBS. RED SH 121.50.

SLAUGHTER EWES 26.00-46.00.

BOARS: 28.50.

VEALS 72.50.

SLAUGHTER CALVES: 60.00-65.00.

Slaughter (Est. Daily)

WASHINGTON, D.C.

MAY 7, 1997

Cattle Calves Hogs Sheep

Wednesday 05/07/97 (est) 131,000

6,000 314,000 14,000
Week ago (est) 133,000 7,000 333,000 15,000
Year ago (act) 131,000 6,000 332,000 16,000
Week to date (est) 402,000 19,000 909,000 39,000
Same Period Last Week (est) 391,000 19,000 955,000 40,000
Same Period Last Year (est) 392,000 19,000 1,002,000 44,000
Previous Day Estimated Steer and Heifer Cow and Bull
Tuesday 112,000 26,000
*Revision on Tuesday Cattle Slaughter ... 138,000
*Revision on Tuesday Hog Slaughter ... 307,000

New Holland Horses

New Holland Sales Stables
New Holland, PA

Monday, May 5, 1997

Report Supplied By Auction

308 HEAD. MARKET STRONGER. WORK 910.00-1185.00.

DRIVING 610.00-950.00. RIDING 450.00-890.00.

BETTER RIDING 1060.00-1300.00. REGISTERED RIDING 800.00-1675.00 2 AT 1525.00-1775.00.

KILLERS, 10 HEAD 960.00-1300.00. HEAVYWEIGHTS 835.00-910.00. LIGHTWEIGHTS 410.00-700.00.

PONIES 135.00-485.00.

LARGE PONIES 505.00-575.00, 3 HEAD 610.00-725.00.

COLTS 210.00-485.00.



WHAT'S AHEAD FOR CATTLE & HOG FUTURES

- We Deal Exclusively in Commodity Futures & Options
- 25 Years of Trading & Hedging Experience
- We Handle Commercial & Personal Accounts

For Free Information or For A Personal Consultation, Please Call...

(610) 366-7979 or 800-543-8939

LEHIGH VALLEY FUTURES INC.

Commerce Plaza, Suite 249, 5000 Tilghman Street, Allentown, Pa 18104

The risk of loss in trading futures and options on futures can be substantial. Futures and options trading may not be suitable for everyone. You should carefully consider the risks in light of your financial condition in deciding whether to trade.

CR Rotary Tedder Rake

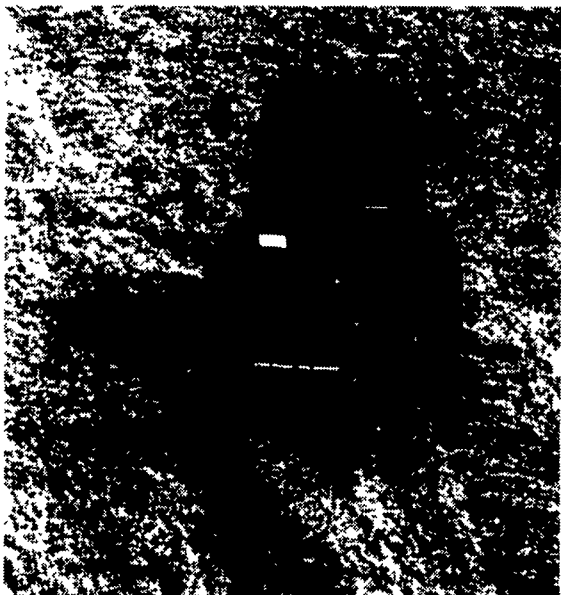
100% good clean raking

The CR Rotary Tedder Rake provides effective windrowing of two swaths up to 7". It also windrows spread crop into one wall-shaped and stable swath.

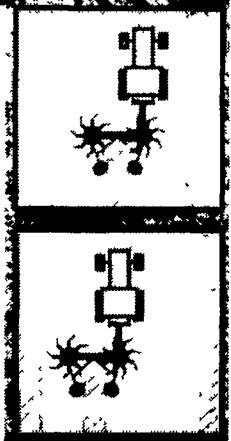
Unique swath rollers

JF's patented swath rollers form a perfect swath for baler or forage harvesters.

Adjusting from spreading to raking is quick & easy - simply change the position of the rake tines by using a spring loaded pin.



Working width, raking	9'10"
Working width, spreading	10'6"
Transport width	8'10"
Working speed, max.	10 MPH
Power consumption	16 HP
Weight	715 lbs.
Tire dimension	400x8-4
Number of rake tines	2x8



SOLD AND SERVICED BY THE FOLLOWING J-F DEALERS

- | | |
|---|--|
| ANTIETAM FORD TRACTOR
Hagerstown, MD
301-791-1200 | GEORGE N. GROSS, INC.
Dover, PA
717-292-1673 |
| BINKLEY & HURST BROS.
Lititz, PA
717-626-4705 | GRUMELLI FARM SERVICE
Quarryville, PA
717-786-7318 |
| CARLYLE & ANDERSON, INC.
Hamilton, VA
540-338-4177 | HINES EQUIPMENT
Union Bridge, MD
410-775-2629 |
| CARLYLE & ANDERSON, INC.
Winchester, VA
540-722-6638 | WALTEMYER'S SALES & SERVICE
Red Lion, PA
717-244-4168 |
| GLADHILL BROTHERS
Damascus, MD
301-253-2141 | WERTZ FARM EQUIPMENT
Lineboro, MD
410-374-2672 |

NEW HOLLAND SALES STABLES INC. THE ACTION AUCTION

Livestock Is Our Only Business

MONDAY

**SLAUGHTER HOGS
EARLY BIRD HOG SALE
7:30 A.M.**

Sell Your Hogs At New Holland Sales Stables, Inc
See them weighed, sold and pickup your check



**10:00 A.M.
HORSES
MULES**



**10:00 A.M.
SHEEP, GOATS &
CALVES**



**1:30 P.M.
BEEF SALE**

THURSDAY

Beef Auction 10:00 A.M.

**BULLS, STEERS,
BEEF COWS**



**1:00 P.M.
STOCKERS & FEEDERS**



**10:30 A.M.
GOATS, SHEEP
CALVES**



WEDNESDAY

**HEIFER SALE 11:00 A.M.
COW SALE 12:00 NOON**

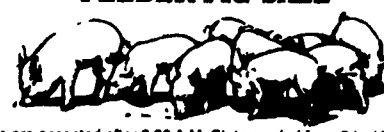
**HEIFERS
BULLS**



**DAIRY
COWS**

We have the usual run of 50 to 100 Heifers, all ages
Loads of fresh cows and springers from our regular
shippers. Also some local fresh cows and springers

**1:30 P.M.
FEEDER PIG SALE**



Pigs are accepted after 8:30 A.M. State graded from 8 to 12. Dairy
Barn and Feeder Pig Barn are cleaned and disinfected weekly for
your protection

NEW HOLLAND SALES STABLES, INC.
12 Miles East of Lancaster Off Route 23, New Holland, Penna.

MANAGERS

Norman & David Kolb- 717-397-5538

Sale Barn Office Manager:

Roger Floyd- 717-354-4341

FAX #717-355-0706

Order Buyer:

Paul Good - 215-445-8882

Field Representatives For Beef and Feeders:

Luke Eberly - 215-267-6608 738-1666

Homer Eberly- 215-267-3047

Nevin Martin 717-354-7188

Ron Ranok - 717-656-8849

Field Representatives For Goats, Sheep & Calves:

Ken Smoker - 810-583-2123