

## Celebration Of Music, Arts At Recreation Area

WYOMISSING (Berks Co.) — The Berks County Parks and Recreation Department will present the 16th Annual Celebration of Music and the Arts at Gring's Mill Recreation Area, Wyomissing, on Sunday, August 3, from noon-8 p.m.

The day will feature a variety of musical groups, craft demonstrations, jugglers, activities for children, and much more. There is no

admission to this event.

Listen to the beautiful bells of Cast in Bronze, a portable carillon. Enjoy the delightful music of the historic Ringgold Band, which was established during the Civil War. The Reading Pops Orchestra will present the final concert, beginning at 6 p.m.

Talented artists will be demonstrated and selling their crafts from noon-6 p.m. Children are

invited to create their own art at craft funshops. Entries to the Senior Arts Contest will be on display. Residents of Berks County 55 years or over, are encouraged to enter. Call (610) 374-8839 to receive an entry form.

Food and refreshments will be available. A \$2 parking donation will be collected. Visitors are encouraged to bring a chair or blanket.

## Northeastern Farm Credit Introduces Manager

LEWISBURG (Union Co.) — Northeastern Farm Credit, ACA has introduced Kevin D. Rimmey as new area manager on its two northern divisions.

Rimmey, a 15-year veteran of the Farm Credit system, comes to northeastern Pennsylvania from Farm Credit Services of Mid-America in Washington Court House, Ohio where he was employed as SAM department manager.

Rimmey began his Farm Credit career in 1982 as a field representative/loan officer in the Upper Chesapeake Farm Credit, ACA in Bel Air, Md. He quickly moved up to senior loan officer in 1985 and the following year became vice

president of credit/operations.

In 1986, he relocated to Pennsylvania and Penn West Farm Credit, ACA. Within four years he became branch manager and in 1994 became executive marketing officer. In 1995, Rimmey became part of Farm Credit Services of Mid-America in Ohio.

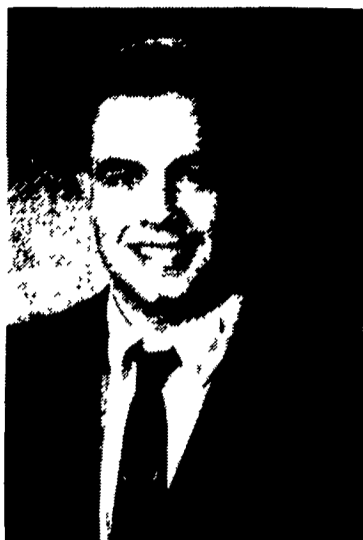
A graduate of Penn State, Rimmey has a bachelor's degree in agricultural mechanization. He has continued his education and training through more than 400 hours of professional improvement seminars in the areas of leadership, finance, marketing, and professional development.

Also, Brian J. Dygert returns to Northeastern Farm Credit, ACA's

Towanda branch following a five-month absence.

Dygert, a New York native, had left Pennsylvania in November 1996 and was working for Farm Credit of Western New York, Hornell, N.Y. as a loan officer. Previously he had been working as a loan officer in the Towanda branch office of Northeastern Farm Credit since April 1993.

With his return, Dygert will be attending various new trainings that have been implemented since his departure. Dygert attended the State University of New York at Fredonia in Fredonia, N.Y., where he earned a bachelor's degree in business administration in May 1991.



Oscar Sipler



Rick Ellerson

## Dairy Sales Team Adds Two

LANCASTER (Lancaster Co.) — Pennfield Corporation has announced the addition of Oscar Sipler and Rick Ellerson to its dairy feed sales team as dairy feed consultants.

Sipler, a graduate of the University of Maryland with a bachelor's in animal science, worked as an intern for the University of Maryland on a rate of gain study in heifers. As a Pennfield dairy consultant, Sipler will be responsible for

covering southern Lebanon and Dauphin counties.

Ellerson, a graduate of S.U.N.Y. at Cobleskill with a degree in animal science, will be a dairy consultant for Pennfield Feeds in New York, covering Cortland and Onondago counties, as well as parts of Chenango and Madison counties. Ellerson has had experience as an independent nutritionist for nine years. He has also been a herdsman and manager on dairy farms.

## Farmers First Names V.P.

LITITZ (Lancaster Co.) — Farmers First Bank has recently named Andrew C. Terrell as vice president of agricultural lending.

Prior to working with Farmers First, Terrell was a vice president of corporate lending with Meridian Bank and CoreStates Bank. He has also held positions with the USDA Crop Reporting Service and the Lancaster Farm Credit Service.

Terrell was graduated from

Penn State and earned his bachelor's degree in agricultural business management. He has also completed numerous courses through the American Banking Association and Robert Morris Association.

Outside of banking, he has been involved in the Lancaster Red Rose Sertoma, Lancaster and Lebanon chambers of commerce, and the Welsh Mountain Medical Center.

## Chemgro Seeks To Market DuPont Product

DES MOINES, Iowa — DuPont Agricultural Products and Chemgro Seeds announced that Chemgro Seeds will be marketing seed capable of producing DuPont Optimum® High Oil Corn during 1998.

"DuPont is pleased to offer Optimum® High Oil Corn to customers of Chemgro Seeds. This partnership makes it possible for producers to harvest more value per acre, provide feed for livestock, or both. High oil corn also provides producers and grain handlers more control of their marketing options," said Soren Raveling, sales specialist, DuPont Quality Grains of Des Moines, Iowa. Quality Grains is a unit of DuPont Agricultural Products, Wilmington,

Del.

"We are excited about our relationship with DuPont. Our field trial results with the Top Cross Grain Production System have demonstrated potential for our customers to harvest more end-use value per acre with Optimum High Oil Corn. It offers us the opportunity to provide our customers with a superior feed product that can help their bottom line," said Chemgro's Jim Bowersox.

Optimum High Oil Corn, which has an oil content as high as 8.5 percent compared with four percent or less in typical dent corn varieties, was harvested from approximately 350,000 acres in 1996. Nearly 1 million acres are expected to be planted in 1997, Raveling said.

## New Loader Means More Uses For Tractors

RACINE, Wis. — With the introduction of the new Case IH 890 loader, farmers will get even more use from their 8900 Series Magnum™ tractors, according to Roger Lewno, Case Corporation marketing specialist, tractors.

"Fully utilizing a Magnum means using the tractor for more than pulling implements," he said. "There are a host of attachments to make the loader and tractor combo as versatile as possible, and new attachments are continually being introduced to meet farmers' needs."

The 890 loader is self-leveling and features a low-profile design that helps keep sight lines clear during operation for excellent visibility to the work area and increased safety. It has a lift capacity of 4,100 pounds (1,859 kg), a breakout force of 6,700 pounds (3,039 kg), and a lift height of 14.2 feet (4.32 m).

Available in a mid-mount style that features a quick attach/detach mechanism, the 890 hoses connect to the tractor remote hydraulics



Equipped with the new Case IH 890 loader, an 8900 Series Magnum™ tractor can tackle dozens of applications, including handling bales, transporting pallets, moving snow and dirt, carrying manure, and stocking the feedlot and feed bunks.

rear outlets and a quick-disconnect point of the loader mounting brackets. The mid-mount style has the option of a single-lever joystick with either two or three functions. Other features of the mid-mount style include an integral grille guard, built-in weight frame and a bucket-level indicator.

The 890 is also available in a rear-mount style in which the hos-

es simply connect to the tractor remote hydraulics rear outlets.

"Case offers attachments to make the 890 loader and Magnum tractor combo an integral part of any farming operation," Lewno said. "Productivity and efficiency are enhanced, and, because the tractor is handling multiple tasks, the need for new equipment purchases is reduced."

Attachments currently available through Case IH dealerships include:

- Two heavy-duty buckets, available in 96- and 108-inch sizes, for light- and heavy-load duties, such as snow removal and carrying gravel or dirt.
- Bale spikes for the handling of round straw or hay bales.
- Pallet forks to transport pallets and crates of seed, fertilizer, etc.
- Manure tines that attach to the 96-inch bucket for feedlot chores.
- Bale grapples, available for both sizes of buckets, for moving bales of hay, straw or silage to the feedlot or feed bunks.

## Insect Protection Technology

SHAWNEE MISSION, Kan. — A longtime leader in alfalfa research and development, AgriPro Seeds, Inc. has introduced two new alfalfas for the 1997 growing season — one with revolutionary bred-in insect protection and the other with an outstanding package of disease resistance and continuous grazing tolerance.

New AgriPro Interceptor is a fall dormancy 3 alfalfa with bred-in AlfaGuard™ insect protection technology. Glandular hairs tipped with sticky resin protrude from stems of Interceptor plants to ward off the No. 1 insect pest in alfalfa — potato leafhopper.

"Our researchers have invested more than 10 years developing the AlfaGuard technology that produces glandular hair," said Dr. Mark Jacques, manager of product development at AgriPro. "It is a

significant, bred-in advantage that will help alfalfa growers maintain the quality and quantity of forage produced."

According to Dr. Jim Moutray, director of alfalfa research at AgriPro, "Interceptor and future AgriPro alfalfas protected by AlfaGuard technology can reduce the need to apply foliar insecticides for control of potato leafhoppers while providing the high yields and quality of our conventional alfalfas.

"Interceptor has an upright growth habit with dark green foliage, good drought stress tolerance, winterhardiness and stand persistence," Moutray said. "The complete package of outstanding disease resistance, glandular hair insect protection and high yield potential should make it a con-

sideration for growers in any area that has a potential for potato leafhopper infestation."

New Feast from AgriPro is a top-of-the-line grazing alfalfa that was developed under actual grazing conditions to survive continuous livestock feeding and traffic.

"Feast has an outstanding package of disease resistance and grazing tolerance that will allow growers and livestock producers the flexibility and cost savings associated with a haying or grazing alfalfa — with the added benefit of excellent persistence under rotational grazing," Moutray said.

"It has aggressive upright growth and large crowns that help it recover quickly after cutting or grazing and it will withstand mismanagement better than standard haying varieties," he said.

**MILK  
AMERICA'S HEALTH KICK**