



HOG MARKETS

New Holland Feeder Pigs

New Holland, PA
Wed., April 30, 1997
Report Supplied by USDA
TODAY 801 HEAD
LAST WEDNESDAY 594
LAST YEAR 935 HEAD
TREND: COMPARED TO LAST WED. FEEDER PIGS MOSTLY STEADY. SUPPLY INCLUDED 58 PERCENT SOLD FOR SLAUGHTER. ALL PIGS WEIGHED ON ARRIVAL AND SOLD BY THE HUNDRED WEIGHT.
US#1-2: 34 HEAD 19-27 LBS. 145.00-175.00, WEIGHTED AVERAGE 25.88, WEIGHTED PRICE 151.99; 67 HEAD 30-36 LBS. 120.00-155.00, WEIGHTED AVERAGE 32.16, WEIGHTED PRICE 142.27; 98 HEAD 40-48 LBS. 130.00-145.00, WEIGHTED AVERAGE 44.54, WEIGHTED PRICE 138.86; 53 HEAD 50-51 LBS. 125.00-137.00, WEIGHTED AVERAGE 50.09, WEIGHTED PRICE 131.40; 42 HEAD 62 LBS. 115.00-120, WEIGHTED AVERAGE 62.00, WEIGHTED PRICE 118.09.
US 2: 39 HEAD 60-66 LBS. 107.00-110.00, WEIGHTED AVERAGE 61.67, WEIGHTED PRICE 109.42.
US 2-3: 15 HEAD 23-35 LBS. 115.00-130.00, WEIGHTED AVERAGE 24.33, WEIGHT PRICE 123.84; 9 HEAD 32-45 LBS. 110.00, WEIGHTED AVERAGE 39.44, WEIGHTED PRICE 110.00.
SLAUGHTER: 92 HEAD 18-37 LBS. 120.00-155.00, WEIGHTED AVERAGE 22.77, WEIGHTED PRICE 142.32.
AS IS: 98 HEAD 21-26 LBS. 105.00-115.00, WEIGHTED AVERAGE 22.77, WEIGHTED PRICE 23.72/109.99; 181 HEAD 33-92 LBS. 55.00-90.00, WEIGHTED AVERAGE 55.14, WEIGHTED PRICE 69.75.
ALL PIGS CONSIGNED TO WED. FEEDER PIGS SALE MUST ORIGINATE FROM A QUALIFIED NEGATIVE OR MONITORED HERD.

State Graded Feeder Pig Sale

Carlisle Livestock Market, Inc.
Friday, April 25, 1997
RESULTS ON 883 PIGS. TREND: COMPARED TO APRIL 11 STATE GRADED SALE, PIGS WERE ACTIVE; ALL PIGS ARE FROM QUALIFIED OR MONITORED HERDS; THEY WERE WEIGHED ON ARRIVAL AND SOLD BY THE HUNDREDWEIGHT.
US#1&2: 558 HEAD. 88 HEAD 44-49 LBS. 130.00-142.00; 297 HEAD 51-59 LBS. 128.00-142.00; 136 HEAD 61-69 LBS. 110.00-137.00; 37 HEAD 78-79 LBS. 114.00.
US#2: 275 HEAD. 100 HEAD 41-49 LBS. 120.00-136.00; 90 HEAD 51-59 LBS. 120.00-129.00; 49 HEAD 64-69 LBS. 110.00; 29 HEAD 79-90 LBS. 101.00; 7 HEAD 95-125 LBS. 79.00-90.00.
US#2&3: 21 HEAD. 12 HEAD 25-29 LBS. 133.00-139.00; 8 HEAD 40-49 LBS. 129.00-141.00; 1 HEAD 80 LBS. 80.00.
AS IS/UTILITIES: 29 HEAD 12-130 LBS. 25.00-40.00.
NEXT STATE GRADER FEEDER PIG SALES FRIDAY MAY 9 and 23. RECEIVING 7 A.M.-11 A.M. SALE 1:30 P.M. SHARP!

Hatfield Direct

Hatfield, Pa.
Reports Supplied by Packer
For Monday, April 28, 1997
And Wednesday, April 30, 1997
MONDAY: 6538
LAST MONDAY: 6325.
TREND: COMPARED TO LAST MONDAY: 1.08 HIGHER.
55.5%-56.4% 216-269 LBS. BASE 58.75.
56.5%-58.4% 216-269 LBS. 59.52-60.29.
58.5%-60.4% 216-269 LBS. 61.06-61.82.
FEW 216-269 LBS. 62.59.
GOOD'S RECEIVING
MONDAY CASH: 57.75
WEDNESDAY
TOTAL HOGS: 6531
LAST WEEK: 6339
TREND: COMPARED TO LAST WEDNESDAY: 1.75 HIGHER.
55.5%-56.4% 216-269 LBS.: BASE: 59.00.
56.5%-58.4% 216-269 LBS.: 59.77-60.54.
58.5%-60.4% 216-269 LBS.: 61.31-62.07.
FEW 216-269 LBS.: 62.84.

New Holland Hogs

Wednesday, April 30, 1997
TODAY 640
LAST MONDAY 674
LAST YEAR 794
BARROWS AND GILTS: 1.00 HIGHER.
US#1-2 220-260 LBS. 58.50-59.50.
US#1-3 215-270 LBS. 57.00-58.00
SOWS: 1.00-2.00 LOWER.
US#1-3 300-450 LBS. 40.00-41.00;
500-625 LBS. 46.00-47.00.
BOARS: 220-260 LBS. 36.00-37.00.

New Holland Hogs

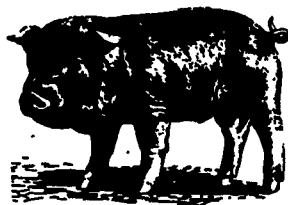
NEW HOLLAND, PA
APRIL 28, 1997
TODAY 923
LAST MONDAY 771
LAST YEAR 1106
TREND: Compared to last Monday barrow and gilts 1.00-1.50 higher.
BARROWS AND GILTS: US 1-2 230-255 lbs 58.10-59.00 US 1 Few 225-245 lbs 59.50-60.00 US 1-3 220-260 lbs 56.75-57.75 200-215 lbs 51.50-53.75 US 3-4 275-290 lb 54.25-55.25.

S & J Villari Livestock Feeder Pig Sale

Millboro, Del.
April 28, 1997
Report Supplied by Auction
441 HEAD
UNDER 30 LBS. 101.00-130.00; 30-39 LBS. 124.00-140.00; 40-49 LBS. 117.00-129.00; 50-59 LBS. 110.00-125.00; 60-69 LBS. 75.00-75.00; 70-79 LBS. 85.00-85.00.

New Holland Sales Stables Goat and Sheep Sale

Monday, April 28, 1997
Calves Sheep Goats
Today 140 836 1043
Last Week 127 2209 1095
CALVES: VEALERS SCARCE; SLAUGHTER CALVES FULLY STEADY.
VEALERS: CHOICE 180-280 LBS. 70.00-80.00
SLAUGHTER CALVES: GOOD AND CHOICE 250-400 LBS. 45.00-70.00, FEW UTILITY 35.00-45.00.
SHEEP: SLAUGHTER LAMBS STEADY; SLAUGHTER EWES FULLY STEADY. SUPPLY INCLUDED 5 PERCENT OLD CROP LAMBS, 75 PERCENT NEW CROP LAMBS WITH THE BALANCE SLAUGHTER EWES.
SLAUGHTER LAMBS: CHOICE 1-2 60-80 LBS. 100.00-115.00.
SHORN LAMBS: GOOD 100-150 LBS. 60.00-90.00.



Carlisle Livestock Market, Inc.
FED CATTLE SALE
Tues., May 6 & 20
Exit 12 off I-81 Turn South
Early Bird Pens
Close 2 P.M.
Market (717) 249-4511
Jim (717) 249-2359

PIGS
STATE GRADED SALE
RECEIVING 7-11 AM
FRIDAY
MAY 19 & 23
1:30 P.M.
AT
Carlisle
LIVESTOCK MARKET, INC.
Exit 12 Off I-81 Turn South
(717) 249-4511 or
Evenings Jim, 249-2359

LEBANON VALLEY LIVESTOCK MARKET, INC.

1 mile East of Fredericksburg along Rt. 22
Every Tues. and Fri. (Starting Jan. 3) at 1:30 pm
Cattle Sale
2nd & 4th Tues.
Special Fed Cattle Sale
Dave Brubaker
(717) 865-2881



HAY & GRAIN MARKETS

Kirkwood Hay Auction

Kirkwood, Pa.
Tuesday, April 29, 1997
Report Supplied by Auction
78 LOADS OF HAY.
MIXED HAY: 1ST CUTTING 80.00-165.00, 2ND CUTTING 52.00-170.00.
TIMOTHY: 80.00-222.00.
ALFALFA: 1ST CUTTING 88.00-175.00, 2ND 190.00-240.00, 3RD CUTTING 100.00-200.00.
OAT HAY: 70.00 TON.
GRASS: 126.00-172.00.
WHEAT STRAW: 66.00-141.00.
CORN FODDER: 53.00-57.00.
SOYBEAN STUBBLE: 52.00.

Regional Hay

April 28, 1997
Eastern Pa.
HAY & STRAW MARKET FOR EASTERN PA. - (ALL HAY NO. 2 AND BETTER. PRICES PAID BY DEALERS AT THE FARM & PER TON.) HAY AND STRAW STEADY TO STRONG.
ALFALFA 90.00-150.00 FEW REPORTED 170.00; MIXED HAY 90.00-150.00 FEW REPORTED 160.00; TIMOTHY 90.00-120.00 FEW REPORTED 150.00; STRAW 60.00-90.00; MULCH 25.00-40.00.
SUMMARY OF LANCASTER CO. HAY AUCTIONS FOR WEEK ENDING 04/25/97. PRICES PER TON: LOADS: 359 HAY, 97 STRAW & 16 EAR CORN.
ALFALFA 125.00-225.00; MIXED HAY 95.00-220.00; TIMOTHY 99.00-186.00; STRAW 80.00-135.00; EAR CORN 90.00-105.00.
SUMMARY OF CENTRAL PA HAY AUCTIONS FOR WEEK ENDING 04/25/97. PRICES PER TON: LOADS: 208 HAY, 19 STRAW & 31 EAR CORN.
ALFALFA 90.00-195.00; MIXED HAY 79.00-160.00; TIMOTHY 71.00-132.00; STRAW 62.00-107.50; EAR CORN 80.00-97.50.

Diffenbach Auction Center

New Holland, Pa.
Monday, April 28, 1997
Report Supplied by Auction
TOTAL LOADS: 116.
ALFALFA: 157.00-276.00.
MIXED HAY: 72.00-230.00.
TIMOTHY: 105.00-212.00.
HAYLAGE: 25.00 BALE.
ORCHARDGRASS: 85.00-160.00.
REEDS CANARYGRASS: 175.00.
STRAW: 60.00-165.00.
EAR CORN: 100.00-102.00.
CORN FODDER: 50.00.

The Windmill

Penn Yan, N.Y.
Friday, April 25, 1997
Report Supplied by Auction
15 LOADS.
ALFALFA TIMOTHY: 1ST CUTTING 122.00-140.00, 2ND CUTTING 147.00-170.00.
GRASS: 1ST CUTTING 70.00-85.00.
TIMOTHY: 1ST CUTTING 127.00-145.00.
STRAW: 105.00-112.00.
SALE EVERY FRIDAY, 9 AM.

Middleburg Hay

Middleburg, PA
Tues., April 29, 1997
Report supplied by PDA
87 LOADS TOTAL, 63 LOADS OF HAY.
ALFALFA: 26 LOTS, 82.00-210.00.
MIXED HAY: 30 LOTS, 55.00-170.00.
TIMOTHY: 3 LOTS, 117.50-132.50.
ORCHARD GRASS: 4 LOTS 100.00-185.00.
STRAW: 4 LOTS, 75.00-102.50.
EAR CORN: 14 LOTS, 82.50-90.00.
OATS: 1 LOT, 2.75-3.60 BU.

Kutztown Produce Auction Hay Auction

Report Supplied by Auction
Saturday, April 26, 1997
TOTAL LOADS: 26.
ALFALFA: 148.00-180.00.
GRASS HAY: 135.00.
MIXED HAY: 80.00-200.00.
TIMOTHY: 132.00-175.00.
WHEAT STRAW: 85.00-135.00.
OATS: 2.90 BU.
HAY, STRAW, FIREWOOD, PRODUCE AND CONSIGNMENTS SOLD EVERY SAT. AT 9 A.M.

North Jersey Market

Hackettstown, N.J.
Report Supplied by Auction
Tuesday, April 29, 1997
Hay—Straw & Grain Report
ALFALFA: 3 LOTS, 1.50-3.60 BALE.
MIXED HAY: 11 LOTS, 1.50-2.70 BALE.
TIMOTHY: 9 LOTS, 1.20-2.50 BALE.
GRASS: 3 LOTS, 1.25-2.60 BALE.
MULCH: 1 LOT AT 1.10.
OAT STRAW: 1 LOT AT 1.30.
RYE STRAW: 3 LOTS, 2.50-2.60 BALE.
SHELLED EAR CORN: 1 LOT AT 6.25 BAG.
GROUND CORN: 2 LOTS, 4.50-5.00 BAG.
34 LOTS TOTAL.

PENNFIELD GRAIN BANK

Pennfield Offers A Sound Program For The Dairy Farmer To Use His Grain "Same As Cash" To Reduce His Monthly Feed Bill And To Avoid Having To Take "Harvest Price" For His Grain

Prices Week Of 5/5/97
Corn \$3.43 Bu.
Soybeans \$8.67 Bu.
Barley \$3.25 Bu.

- No Storage Charges
- Prices Updated Weekly
- Grain Bank Balance Shown On Each Invoice
- No Hidden Charges

For every ton of qualifying dairy feed purchased you will receive one ton of grain back hauled at no charge



INDEX
Four Sections

COLUMNS

Now is the Time..... A10
On Being A Farm Wife..... B 2
All Garden's..... B 3
Ida's Notebook..... B 5
Family Living Focus..... B 9

DEPARTMENTS

Editorial..... A10
Farm Calendar..... A10
Farm Forum..... A10
Futures..... A16
Mailbox Markets..... B22
Sale Reports..... B27
Public Auction Register..... B33
Business News..... C 4, C 7
Classified Ads..... C10, D 2

DAIRY

Dairy Week..... A16
DHIA Focus..... A32
PA DHIA..... C 8

HOME AND YOUTH

Homestead Notes..... B 4
Home On The Range..... B 6
Cook's Question Corner..... B 8
Kid's Korner..... B10
You Ask, You Answer..... B11
FFA Happenings..... B14, B16
4-H Happenings..... B17, B21
Farm Women Societies..... B16

FEATURES

Dairy Expo..... A24
Poultry Science..... A26
Jr. Guernsey..... A28
Fruit Structures..... A30
Nutrient Management..... A36
Blue Halter Show..... A37
Pasture Walks..... A38
Farm Theme..... B 4
Trucks Roll..... B12
4-H Capitol Days..... B17
Cattlemen's Show..... C 6

HERE TODAY • HERE TO STAY
For Buying or Selling Livestock
Call Dunlaps at (717) 397-5136

Slaughter Cattle
Every Monday 9:30 AM

Feeder Cattle
EVERY FRIDAY
DURING APRIL

SPECIAL FEEDER CATTLE SALE
May 16th

Receiving Market Hogs
Wednesday
6:30 AM

Sheep & Goat
Consignments Welcome
for Mondays

New Sheep & Goat Manager ..
Jim Hunsicker
717-397-5136 or 717-656-4264

Graded Sow & Boar Sales

May 6 & 20

(1st & 3rd Tues. of month)
Receiving 6:00 AM to Noon
SALE - 2:00 PM (INDIVIDUALS)
2:30 PM - Large Lots (TELE-AUCTION)



Sows to be graded & weighed in 50 lb increments
PROBLEM SOWS
SOLD SEPARATELY

Walter M. Dunlap and Sons
LANCASTER STOCKYARDS

An Old Line Commission Firm Dedicated to Livestock Marketing for the 21st Century!