

Shenandoah Valley Livestock

Harrisonburg, Va.
April 26, 1997

Report supplied by auction
90-499 LB. STEERS 70.00-91.50,
HEIFERS 50.00-76.00, BULLS
50.00-75.00; 500-699 LB. STEERS
65.00-85.00, HEIFERS 50.00-74.00,
BULLS 48.00-70.00; 700-1000 LB.
STEERS 55.00-75.00, HEIFERS
48.00-60.00, BULLS 50.00-55.00.
HOLSTEIN STEERS 3-499
50.00-65.00; 5-699 36.00-52.00; 7-1100
57.00.
STOCK COWS BEEF 300.00-625.00;
BABY CALVES 22.50-138.00;
SLAUGHTER COWS 31.00-41.75;
SLAUGHTER BULLS 40.00-53.00.
SLAUGHTER LAMBS CHOICE AND
PRIME YG#1-3 BLUE O 124.50; GOOD
AND FEW CHOICE YG#1-2 RED O
125.50.
FEEDER LAMBS MED. AND LGE.
1&2 70-84 LBS. RED SH 125.50; 60-69
LBS. RED BK 124.50.
SLAUGHTER EWES 27.00-46.00.
SOWS: 26.00.
BOARS: 27.50.
PALS 60.00-68.00.
SLAUGHTER CALVES: 55.00-62.00.

New Holland Horses

New Holland Sales Stables
New Holland, PA

Monday, April 28, 1997

Report Supplied By Auction
278 HEAD. MARKET STRONGER.
WORK 885.00-1350.00.
DRIVING 585.00-1350.00.
RIDING 585.00-925.00.
BETTER RIDING 1000.00-1300.00.
REGISTERED RIDING
635.00-1450.00 2 AT 1685.00-1750.00.
MULDS: 910.00-1475.00.
KILLERS, 8 HEAD 1010.00-1325.00,
HEAVYWEIGHTS 750.00-935.00,
LIGHTWEIGHTS 485.00-660.00.
PONIES 150.00-400.00.
LARGE PONIES 450.00-570.00, 3
HEAD 600.00-825.00.
COLTS 135.00-415.00, 1 AT 660.00.

Pennsylvania Livestock

WAYNESBURG, PA
MAY 1, 1997

CATTLE:
SLAUGHTER COWS: Utility & Com-
mercial 36.00-43.50; Cutter & Boning
Utility 30.00-39.50; Canner & Low Cutter
28.00-34.50; Shells 27.00 & down.
BULLS: Yield Grade 1 1500/2000 lbs,
42.00-53.00; Yield Grade 2 1000/1400 lbs,
35.00-51.00.

FEEDER STEERS: M&L 1 300/500
lbs, 50.00-85.50; 250/280 lbs,
48.00-80.00; M 600/900 lbs, 50.00-75.50;
HEIFERS: M 1&L 1 300/500 lbs,
35.00-73.50; L 1400/650 lbs, 38.00-70.00;
BULLS: M&L 1 300/620 lbs, 42.00-80.00.
CALVES: Veal: Prime 40.00-85.00;
Choice 38.00-62.50; Good 35.00-48.00;
Farm Calves: #1 Holstein Bulls 90/120 lbs,
few 35.00-65.00; #2 Holstein Bulls 80/100
lbs, few 20.00-40.00; Beef X Bulls & Hfrs/
Hd 20.00-100.00.

HOGS: Barrows & Gilts #1-2 210/255
lbs, 45.00-54.50; #2-3 255/280 lbs,
45.00-47.50; Sows: #1-3 300/500 lbs,
30.00-48.00; Feeder Pigs: 1-3 15/20 lbs,
5.00-17.00/Hd; 1-3 25/35 lbs,
10.00-45.00/Hd.

LAMBS: High Choice 80/100 lbs,
90.00-123.00; Choice 70/90 lbs,
80.00-108.00; Feeder Lambs: Good
75.00-105.00; Sheep 20.00-58.00; Fat
Sheep 40.00 and down.

GOATS: Large 60.00-85.00/Hd;
Medium 30.00-55.00/Hd; Small
10.00-40.00/Hd.
HORSES: Horses 35.00-64.00; Ponies
20.00-44.50.

Valley Stockyards

Athens, Pa.

April 28, 1997

Report supplied by auction
HOLSTEIN HEIFER CALVES TO

140.00.

VEAL CALVES NONE.
VEALER BULL CALVES TO 120.00.
SLAUGHTER CALVES 43.00 AND
DOWN.
GRASSERS AND FEEDERS TO 60.00.
LAMBS 125.00-137.50.
SHEEP NONE.
HOGS, 200-250, TO 44.00.
SOWS 36.00-43.50.
BOARS 28.50.
PIGS TO 45.00.
HEIFERS FAT TO 36.25.
STEERS TO 47.00.
STEERS, FEEDER, TO 62.00.
BULLS 35.00-44.25.
COWS, GOOD, 35.50-44.25.
COWS, MEDIUM, 29.75-34.25.
COWS, POOR OR SMALL, 28.50 AND
DOWN.
HORSES 235.00-600.00.
GOATS 15.00-50.00.

Slaughter (Est. Daily)

WASHINGTON, D.C.

APRIL 30, 1997

Cattle Calves Hogs Sheep
Wednesday 04/30/97 (est) 133,000
7,000 333,000 15,000
Week ago (est) 134,000 6,000 321,000
14,000
Year ago (act) 132,000 6,000 357,000
17,000
Week to date (est) 391,000 19,000
955,000 40,000
Same Period Last Week (est) 398,000
18,000 946,000 39,000
Same Period Last Year (est) 397,000
19,000 1,054,000 49,000
Previous Day Estimated Steer and Heif-
er Cow and Bull
Tuesday 107,000 22,000

New Holland Dairy

New Holland Sales Stables
Wednesday, April 30, 1997

Report supplied by auction
78 DAIRY COWS; 92 HEIFERS; 4
BULLS. MARKET STRONGER.
LOCAL FRESH 485.00-1285.00.
LOCAL SPRINGERS 710.00-1060.00.
FRESH HEIFERS 650.00-1325.00.
UPSTATE LOADS FRESH
960.00-1525.00, 1 PB AT 1700.00.
SPRINGING HEIFERS LARGE
985.00-1085.00, SMALL 575.00-885.00.
SHORTBRED HEIFERS
760.00-1025.00.
OPEN BREEDING AGE HEIFERS
610.00-750.00.
SMALL OPEN HEIFERS
210.00-585.00.
BULLS 475.00-535.00, PUREBREDS
410.00-525.00.

Westminster Hay

Westminster, Md.

Tuesday, April 29, 1997

Report Supplied by Auction
132 LOADS.
ALFALFA: 1.50-5.10 BALE.
TIMOTHY: .90-1.10 TON, 1.20-3.90
BALE, 26.00 LG RD.
MIXED: 1.50-3.80 BALE.
GRASS: 1.00-3.10 BALE, 26.00 LG
RD.
STRAW: 1.40-2.80 BALE.
MULCH: .60-1.00 BALE.

High Quality, Low Cost
Long Distance
10.9¢ day/night/weekends
6 sec billing - 888 #s
18.9¢ Canada d/n/w
No Service Charge
19¢ Prepaid Calling Cards
Call: Richard Mummau
717-653-6112
800-808-2737

Hard Water Problems?

We have
The Alternative
* 90 Day Guarantee!
* Inexpensive
* Maintenance Free
* Environmentally friendly
* Uses no salts or chemicals
The Strongest, aqua tron
Most Effective
Electronic Descaling
Technology on the
Market Today

We Reclaim Filtering South Systems
Guaranteed Results!
ECO TECH
Call Today 1-800-879-0921

RAY EAGER & SONS

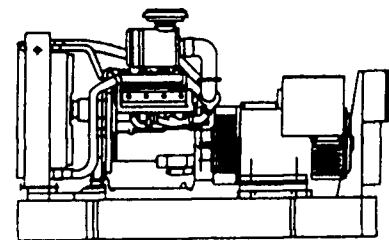


Agricultural Washdowns

717-949-3212

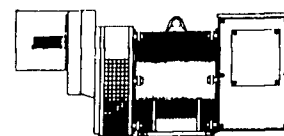
SPECIALIZING IN
Poultry Houses: Layers, Breeders, Broilers
Hog, Veal and Dairy Barns
High Pressure, Low Volume Washing
RD #1 Box 147, Newmanstown, PA 17073

GENERATOR SYSTEMS
1-800-779-8809



New & Used 5 to 2500 KW
Diesel • Propane • Natural Gas

24 Hour Emergency Service
Sales - Installation
Maintenance Contracts • Rentals



Tractor Driven

Generators 10-150 KW
1800 RPM Brushless
New & Used

DYNA TECH[®] Ind.


Dynamic Technologies

DYNA-TECH INDUSTRIES
602 E. Evergreen Rd., Lebanon, PA 17042
717-274-8899 FAX 274-8934

Visit us on The Web Site: <http://www.dynagen.com>
Ask About Our Lightning & Surge Protection Units
Panel Mount • Plug-In • Electric Fence Protection




Leasing Available

When Daniel Massey,  a farmer, first started
serving agriculture by building farm machinery 150 years

ago,  he insisted on superior reliability,

innovation, and service. Today you'll find those same

qualities in every one of more than 140 models of MF

tractors, loaders,  and implements. This

NEVER COMPROMISE™ ethic has made Massey Ferguson

the world's most popular brand of tractor for over **34**

consecutive years. And it's why your

MF Dealer  is celebrating with unprecedented

deals. Stop in for a test drive today.



Massey Ferguson is a wholly owned subsidiary of AGCO Corporation, Duluth, GA

SEE YOUR NEAREST DEALER FOR DETAILS

C.J. WONSIDLER
1975 Trumbauersville Rd.
Quakertown, PA 18851
(215) 536-1835

**LEBANON VALLEY
IMPLEMENT CO.**
700 E. Linden St.
Richland, PA 17087
(717) 866-7518

**NORTHEAST
DIST. & EQUIP.**
Rt. 106
West Clifford, PA 18413
(717) 222-9090
(717) 222-9020

**S.G. LEWIS
AND SON**
West Grove, PA 19390
(610) 869-9440
(610) 869-2214

**D.W. OGG
EQUIPMENT CO.**
5149 Cap Stone Rd.
Frederick, MD 21701
(301) 473-4250
Westminster, MD
(410) 848-4865

M.M. WEAVER & SON
N. Groffdale Rd.
Leola, PA 17540
(717) 655-2321

**PEOPLE'S SALES
& SERVICE**
Oakland Mills, PA 17078
(717) 468-2735

**ECKROTH BROS.
FARM EQUIPMENT**
RD #2, Box 244
New Ringold, PA 17060
(717) 843-2131

**MEYERS
IMPLEMENTS, INC.**
400 North Arliff Way
Greencastle, PA 17225
(717) 587-2178

**FRANK RYMON &
SONS, INC.**
309 Route 31, South
Westampton, NJ 07882
(609) 889-1454

**TEST DRIVE
ONE TODAY!**

4910 Kempsville Rd.
Oxford, PA 19069
(610) 356-2088
807 East Ave.
Bloomsburg, PA 17815
(717) 784-3217

**MILLER
EQUIPMENT CO.**
Sound Road
Bloomsburg, PA 17815
(717) 848-2917

**SCHREFFLER
EQUIPMENT**
Plymouth, PA 17061
(717) 848-7180

