

JD 2840, 80 H.P., Heater, Hi-Lo, Diff Lock,
 Dual Hyd, 1100 Hrs On Eng. Overhaul,
 Clean Midwest Unit **\$9,250**

Also Available:
 JD 2640, Fender, Clean Unit,
 From Minnesota..... **\$9,500**

Financing & Trucking Available
410-833-9091

TRACTOR REPAIRS

- We Have Experienced Ford Tractor Mechanics That Specialize In Ford Tractor Repairs -
- We Specialize In Any Size Ford Tractors And Have Since 1921
- We Specialize in Select-O-Speed Ford Transmissions
- Call For Quotes

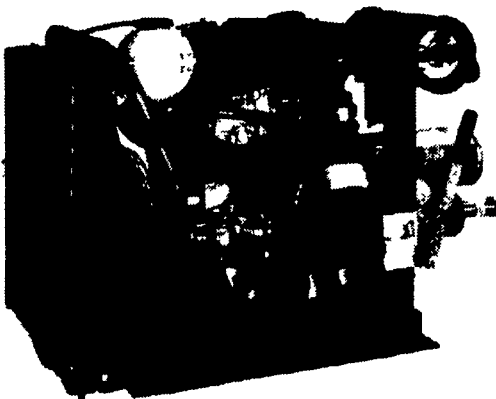
717-949-2000



KELLER BROS.

RD 7 Box 405
 LEBANON, PA

VOLKSWAGEN INDUSTRIAL ENGINES



1.9 LTR. ADG

NATO CERTIFIED
 LIQUID-COOLED NATURALLY ASPIRATED
 DIESEL INDUSTRIAL ENGINE
 58 HP @ 4000 R.P.M., 50 HP @ 3000 R.P.M.
 TOTAL POWER UNIT SHOWN IS 450 LBS.,
 (Wet Weight)

Volkswagen's state-of-the-art engineering has created the 1.9 liter ADE, a liquid-cooled, turbo diesel engine, and the 1.9 liter ADG, a liquid-cooled, naturally aspirated diesel engine. They are the cleanest and quietest engines in their class, with impressive 3.81:1 and 3.31:1 weight to horsepower ratios, respectively. The 1.9 liter ADE engine packs 78 HP, yet weighs a mere 467 pounds in its complete power unit form. The 58 HP, 1.9 liter ADG engine weighs only 450 pounds in its complete power unit form. This kind of responsive engineering is ideal for any customized application need.

PENN DIESEL SERVICE CO.

337 North Fairville Avenue,
 Harrisburg, PA 17112
 (Interstate 81, Exit 27)

(717) 545-4207 • (800) 535-2913
 Fax (717) 545-0015

USED/RENTAL LIQUID MANURE EQUIPMENT

Spreaders
 Houle 2,700 w/16.5x16.1 Tires..... **\$6,500**
 Houle 5,250 gal. w/steering & 28Lx26
 tires..... **Call**
 Houle 3,600 w/23.1x26, rental..... **\$13,499**
 Houle 3,850 w.23.1x26, rental..... **\$14,700**
 Houle 4,800 w/28Lx26', rental..... **\$16,700**
 Balzer 3,350 vacuum 23.1x26
 new..... **\$16,500**
 Calumet 3750, 1992 w/50x21-20
 used..... **CALL**
 Gehl 329 scavenger, excellent
 shape..... **\$10,500**
 WC 3400, used..... **CALL**

Pumps
 Houle 10' - 12' vertical agi-pump,
 new..... **CALL**
 (2) Houle 28" maxi-pumps, (1) 3pt.
 + (1) trailer..... **CALL**
 (2) Houle pto irrigation pumps, rental
 units..... **\$4,500 each**
 Houle 32' lagoon agi-pump,
 rental..... **CALL**
 Houle 42' lagoon agi-pump,
 rental..... **CALL**
 Houle 3 pt. articulated Super Pump,
 1992..... **\$5,000**
 Balzer 43' prop agitator, rental.. **\$5,500**
 Balzer 25' 3 pt prop agitator,
 new..... **\$4,775**

Mid-Atlantic Agri Systems

1950 Barren Rd., Oxford, PA
800-222-2948

PLOW SEASON SPECIAL

ULTRACLEAN OFF-ROAD DIESEL

@ 77.9¢*

PER GALLON

**** ASK ABOUT LUBE SPECIALS ****



CALL 1-800-984-1411

SICO REALIZES YOUR LIVELIHOOD DEPENDS ON
 QUALITY PRODUCTS THAT KEEP YOUR FARM EQUIPMENT
 RUNNING EFFICIENTLY

*NET PRICE/CANNOT BE COMBINED WITH OTHER DISCOUNTS
 *SPECIAL PRICE FOR LIMITED TIME ONLY
 *MUST MENTION AD TO RECEIVE SPECIAL PRICE

Best Buys in Used Equipment

NEEDED - LATE MODEL TRADE-INS

TRACTORS

- Case IH 7120 MFD - \$35,000
- Case 870 w/Loader
- Case 995
- Case 1690
- Case 2090
- Case 2290
- 5140 MFD - Coming In
- IH 140
- IH 154
- IH 404
- IH 560
- IH 84 Hydro w/Loader
- IH 656 Hydro
- IH 966 Hydro
- IH 1086 w/cab
- IH 1256
- IH 2500 w/ Loader
- D.B. 1200
- Farmall 300
- Hesston 6066
- Ford 8N

HAY EQUIPMENT

- Hesston IH 8545 Baler
- Hesston 4750 Baler
- NH 68 Baler
- NH 484 Round Baler
- NI 486 Round Baler
- NI 4845 Round Baler Demo/Rental
- Rack Wagon (like new)
- NH 1495 SP
- NH 1495 Hydro.
- NH 499 Haybine
- IH 1190 Mower Cond.
- Case IH 3 pt. Disc Mower
- Hesston 1150 12 ft. Mower
- Case IH 8330 Windrower

HARVESTING EQUIPMENT

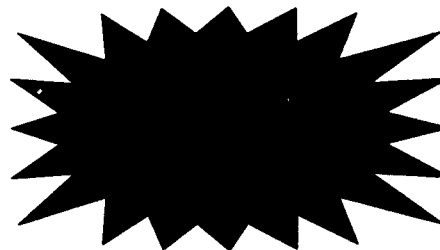
- Gleaner R-52
- NH 1600 Harvester, 3 RN, 7 ft. Hay Head
- NI 803C w/6200 Harvester
- Platform Feeders (Like New)
- NH 3RN Corn Head
- Fox Harvester Heads - 2 RN & 6' Hay
- NI 323 1-Row Cornpicker
- NI 737 Husking Bed
- Badger 950 Forage Wagon
- Dion Wagon (4 yrs. old)
- Gehl 3 Beater Forage Wagon
- JD Forage Wagon

SKID LOADERS

- Case 1818
- Case 1825
- Case 1840
- Case 1845
- (2) Case 1845C
- NH L785
- JD 210C Loader, MFD

MISCELLANEOUS

- Century 1,000 Gal Spray-er Price Reduced
- Used 7' Rotary Mower
- Schoessow Feed Wagon
- Westfield 8x51 Grain Auger
- Gravity Wagon & Gear
- Little Giant 36 ft. Elevator
- Zimmerman 36 ft. Elevator
- 30 ft. Elevators
- (2) Gehl 1580 Blower
- NH 27 Blower
- Gehl 99 Blower
- IH 56 Blower
- Case IH 600 Blower
- White 5100, 6RN Planter
- Century 500 Gal. Sprayer
- 300 Gal. Sprayer
- UFT No-Till Drill
- IH 10 Drill
- JD 8300 Drill - Soybean
- JD 8350 Drill - 21x 7
- JD KBB 13x 7 Drill
- Weaverline 330 Cart
- (2) Weaverline 430 Cart
- Hesston Stack Hand 10
- Gehl 250 Spreader
- NI 3222 Sidekick
- NI 213 Spreader
- NI 3626 Spreader
- Artsway 425 cu. ft. TMR
- IH 1250 Grinder/Mixer
- Automatic Roller Mill
- Oswalt 320 Feed Mixer
- Farm Aid TMR Trailer



ZIMMERMAN'S FARM SERVICE, Inc.

1/2 Mile West Off Rt. 501 On School Rd., Bethel, Pa.

717-933-4114