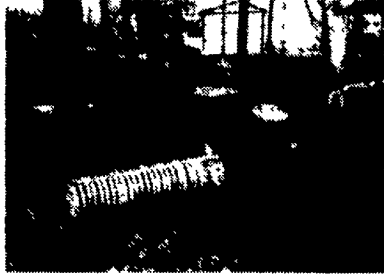




NH 310, Super Sweep, #70  
Thrower w/warranty  
\$3,450



NH 320, Super Sweep, #58  
Thrower w/warranty  
\$4,250

**TRACTORS**

- IH 706 Diesel, Complete Engine, TA Rebuilt, New Rear Tires..... **SOLD** ..... CALL
- Oliver Super 88 Diesel, All Original, Good Runner..... \$2,650
- JD 520 w/PS, 3 pt, Good Rubber (VA Lot)..... \$3,650
- JD 24T Baler w/Bale Chute & Motor, Elec. Start, Shed Kept, Extra Clean..... \$1,650
- IH 400 Air Planter, Local Trade..... CALL

**D. J. IMPLEMENTS - PA**

7:30 - 5:00 PM

(717) 949-3769



**IH TRACTOR PARTS**

Including Crawler & Construction Parts  
**BATES CORPORATION**

14th AND FIR RD., BOURBON, IN 46504

PARTS DISMANTLED, CLEANED & READY FOR SHIPMENT  
WE SHIP UPS, TRUCK, BUS

Best Prices On Factory Rebuilt TA's & Clutches  
**NEW REPLACEMENT PARTS**

CALL THE IH PARTS SPECIALISTS  
TOLL FREE 1-800-248-2955



1300  
Gallon  
Plastic  
Tanks

(610) 269-1298

**MAY HAY DAYS**



**JD AMT 600  
GATOR Utility  
Vehicle**



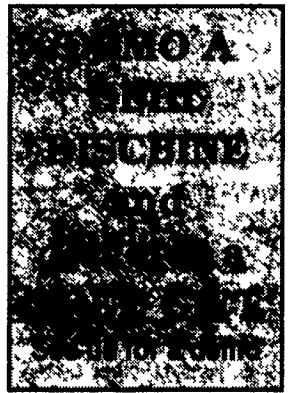
**Husky 22 Ft.  
MANURE PUMP**  
Hyd. Controls,  
PRICE/Call Us For Our Best Deal



**White 5100 6RN  
CORN PLANTER**  
Dry Fert., Insecticide &  
Monitor

**USED HAY & FORAGE EQUIPMENT**

- IH 990 9 ft. Mower Conditioner..... \$895
- Badger 1005 9 ft. Mower Conditioner..... \$1,375
- NH 411 Discbine..... \$5,950
- NH 499 12 ft. Haybine..... \$7,900
- NH 469 9 ft. Haybine..... \$850
- NH 489 9 ft. Haybine..... \$4,450
- JD Self Propelled 2280 14 ft. Windrower..... \$7,500
- NH 816 16 ft. Forage Box w/Roof..... \$5,750
- Dion 16 ft. Forage Box w/Roof..... \$3,575
- Gehl 800 Harvester w/Hay Head, 1000 PTO..... \$3,590
- NH 790 Forage Harvester w/770 Hay Pickup, 824 2RN Corn Head, 540 PTO, Nice..... **CALL**
- Zimmerman 12-Ton Tandem Gear, 12.5L Tires..... \$950
- N.I. 404 7 Wheel, Wheel Rake..... \$895
- Fiberdome 5-Ton Feed Bin..... **GIVE OFFER**



**Umberger's Of Fontana, Inc.**

Rt. 4, Box 545, Lebanon, PA 17042 8 Miles E. of Hershey on Rt. 322  
717-867-5161 or 1-800-261-2106



Hours  
Mon. thru Thurs.  
7:30-6  
Fri. 7:30-8  
Sat. 7:30-4



**LUCK//NOW MIXER FEEDERS "P" SERIES**

Since 1979 **LUCK//NOW** Mixer Feeders have been recognized as one of the most dependable and strongest built mixers in the field.

To enhance its existing line of Mixer Feeders, **LUCK//NOW** introduces the "P" Series of Mixer Feeders with six models ranging in size from the Model 300 with a mixing capacity of 310 cubic ft., to the Model 575 with a mixing capacity of 625 cubic ft.

The Large diameter augers in all the "P" Series Mixer feeders are capable of giving the mix required, from rations with well cured, long stemmed legume-type hay, to mixes with green grass, and mixes with silage and commodities. Better milk production, better weight gains and greatly improved animal health are just some of the results of a finely-tuned feed ration.

**GET DETAILS ON THE ENTIRE RANGE OF LUCK//NOW MIXER FEEDERS**

**CANTON, PA**  
HESS FARM EQUIPMENT  
RR 3, BOX 160

**LEOLA, PA**  
M.M. WEAVER & SONS  
169 NORTH GROFFDALE ROAD

**FREDERICK, MD**  
DOODY MECHANICAL  
SERVICE  
PO BOX 3773

**CLIFFORD, PA**  
NORTHEAST  
DISTRIBUTORS &  
EQUIPMENT  
ROUTE 106, WEST  
CLIFFORD, OFF 181

**LOYSVILLE, PA**  
McMILLEN BROS.  
RD #1 - BOX 134

**LINEBORO, MD**  
WERTZ FARM  
EQUIPMENT  
PO BOX 75

**GREENCASTLE, PA**  
MEYERS IMPLEMENT  
400 N ANTRIM WAY

**MARTINSBURG, PA**  
WINELAND  
EQUIPMENT, INC.  
R.D. #2, ROUTE 164 EAST

**MASSEY, MD**  
JONES DAIRY SERVICE  
12667 MASSEY ROAD

**MIFFLINBURG, PA**  
HESS EQUIPMENT  
SALES & SERVICE  
RR 3, BOX 160



Distributed By:  
**CUMMINGS and BRICKER, Inc.**  
WHOLESALE DISTRIBUTORS

100 Stover Drive  
Carlisle, PA 17013  
717/249-6720

100-120 Lehigh Ave. - P.O. Box 928  
Batavia, New York 14021-0928  
716/343-5411

Serving Farmers Through Farm Equipment Dealers Since 1961

**KUBOTA KUBOTA KUBOTA KUBOTA KUBOTA KUBOTA KUBOTA KUBOTA KUBOTA**

**ERB & HENRY EQUIP., INC. SINCE 1898**

**PARTS - SERVICE - SALES - RENTALS**

**Case IH Parts & Service**

**Check our Parts Prices before you buy!**

- Kubota
- Howard Price
- Grasshopper
- Cub Cadet
- Befco Equip
- Brouwer Turf
- Woods
- Vicon Spreaders
- John Bean Sprayers
- Meyers Snow Plows

**FARM EQUIPMENT IN STOCK**

**DEMO UNITS:**  
CASE IH 415 Packer Mulcher, 10 1/2 ft.  
**NEW KUBOTA TRACTORS IN STOCK -**  
16 HP to 90 HP

**BEFCO 2-STAR & 4-STAR TEDDERS FIELD READY**

**"NEW, USED, RENTAL & DEMO EQUIPMENT"**

- TRACTORS:**
  - Kubota 7580 4WD 75 HP Cab, 250 Hrs., Loader, Big Snow Bucket, 9' Fisher Plow
  - Case 1845C Skid Loader 3100 Hrs.
  - Gehl 4500 Skid Loader
  - IH 140 FH w/Woods 5' Mower & 5' Snow Plow
  - IH 154 Cub Low Boy
  - IH 154 Cub Low Boy w/5 Ft. Sickle Bar
  - IH 404 Gas, Dual Turf Tires, W/O 3 Pt. Hitch
  - IH 684, Ag Tires, Engine Overhauled
  - Oliver 1550 Gas Wide Front, Over & Under
  - 1987 Ford 1310, 2WD w/Ford Loader (Ex. Cond.)
  - Ford 5610, 2wd w/7700 Ford Loader 1400 Hrs. (Nice Shape)
  - MF 2135 Gas, Turf Special, Nice Clean Tractor
  - MF T030, Ag Tires, New Paint
  - JD 950 2WD, w/Cab & Loader
  - JD M w/Loader, Runs Good
  - Farmall H Nice Shape
  - Farmall Cub w/Front Sweeper Broom & Belly Mower (yellow & white)
  - 184 Cub LowBoy w/Cab & 5 Ft. Mower
  - Farmall Cub Lowboy w/Fast Hitch (Nice)
  - Farmall Cub w/Chains & Blade
  - Farmall Cub w/5 ft. Sickle Bar
  - Farmall F20 (Restored)
  - Farmall A w/1-Bottom Plow, Nice Shape, Needs Paint
  - Case 400 Gas (Restored) Nice
  - Farmall BN w/Bucksaw (Restored)
  - Yammar 187, PS, 2WD w/80" Woods, Nice Shape
- COMBINES:**
  - IH 744 Wide Cornhead for 715, (For Parts)
  - MF 44 4RW, CH, Nice Shape
- COMMERCIAL TURF EQUIP.:**
  - Brouwer Turf Equip. Vac 5.1 Cu. Yard Hyd Dump Demo/Rental
  - Brouwer Turf Equip. 5 Gang Vertical Mower PTO Drive Demo/Rental
  - Brouwer Turf Equip. 5 Gang 5 Blade Reel Mower PTO Drive Demo/Rental
  - Brouwer Turf Equip. TR130 Turf Roller Hydro Drive 828 Lb. Wet Demo
  - Brouwer Turf Equip. Sod Harvester 3000 Ford Tractor w/16" Folding Unit
  - Howard Plice 1260 10'6" Wing Mower Rental \$17,000
  - Howard Plice 17 HP w/52" Floating Deck Hydro Drive New \$3,150
  - Howard Price 14 HP w/48" Floating Deck Hydro Drive New \$2,779
  - Howard Price 727 Diesel w/3 Gang Hyd Reel Mower Used \$4,895
  - National 5 Gang Reel Mower w/11 HP Engine Pull Type Used
  - National 3 Gang 84" cut Reel Mower 12 HP Kohler Used
  - Jacobson Blitzer Reels Off F10 Nice Shape \$250.00 Each 5 Avail.
  - Toro Reels with Frame 7 Available for Parts \$75.00 Each
  - Gravelly 5665 12 HP Electric Start 2 Wheel Walk Behind w/50" Deck Used
  - Gravelly 12 Hp Commercial w/2 Wheel Sulky & Blade Used
  - Kubota GF1800 2 WD 60" Deck w/Bagger Front Deck Used
  - Grasshopper 721 Gas 21 HP 61" Deck w/Bagger.....Coming In
- OUTDOOR POWER EQUIP.:**
  - JD 260 w/Deck
  - Kubota G5200 del Hydro w/48" Deck
  - Cub Cadet 1810 w/50" Mower
  - Cub Cadet 1572 Diesel w/50" Deck & 460 Track-Vac, Nice Shape..... \$4,000
  - Cub Cadet 782 w/44" Mower
  - Cub Cadet 1861 w/46" Deck (Like New)
  - Honda 4514 Hydro 38" Deck Bagger Attachment (Like New)
  - Toro 7 Gang Pull-Type Golf Course Mower (for parts)
  - Dixon ZTR w/30" Cut & Bagger, Nice
  - Good Selection Of Older Cub Cadet Lawn & Garden Tractors, All Makes and Models!
- HAY & FORAGE:**
  - NI 272 Cudhloner
  - IH 440 Baler w/Thrower
  - IH 990, 9 Ft. Mower Conditioner, Field Ready
  - Heaton 4500 Wire Baler w/Thrower
  - NH 411 Discbine
  - NH 479 Haybine Good Rolls, New Wobble Box
- MISCELLANEOUS:**
  - JD Ground Drive Spreader (Needs Wood)
  - Wood 60" Trailing Mower
  - Woods 208 3 pt. Hitch Mower
  - Woods RM59 Mower 3 pt. Hitch.....\$750
  - Woods RM306 6 ft. 3 pt. Finish Mower
  - MF 5 Ft. 3 Pt. Mower
  - 3 Pt. Hitch Goosen Bale Chopper
  - FMC 500 Gal. Trailing Sprayer w/Boom Piston Pump 12 HP Kohler Engine, Stainless Steel Tank
  - Huber Highway Roller, 8-Ton
  - Used Meyers Snow plows
  - Myers 7' Snow Plow For 3600 Ford Tractor
  - Curtis Tractor Cab for 3600 Ford
- TILLAGE:**
  - Hugo 10 ft. Harrow Roller
  - Hyd. Transport.....\$1,500

**• Used Cub Cadet Parts In Stock •  
ERB & HENRY EQUIP., INC.**

One Mile North of Boyertown, New Berlinville, PA

Hours: Daily 7:30 to 5; Sat. 7:30 to 3

**610-367-2169 Fax 610-367-6715.**

**WE SHIP UPS DAILY**

**KUBOTA KUBOTA KUBOTA KUBOTA KUBOTA KUBOTA KUBOTA KUBOTA KUBOTA**