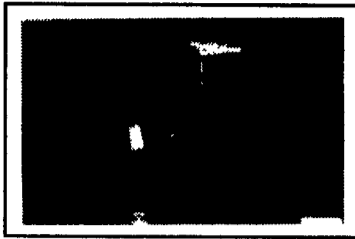


# Best Buys in Used Equipment

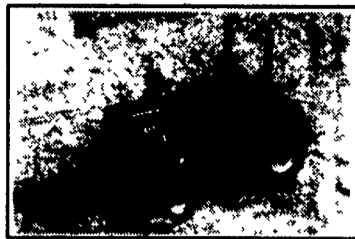
## USED TRACTORS



IH 5088 Tractor 2WD, 1982, 5160 Hrs, 20 8x38 Tires, 540/100 PTO, 3 Hyd Valves (20585)



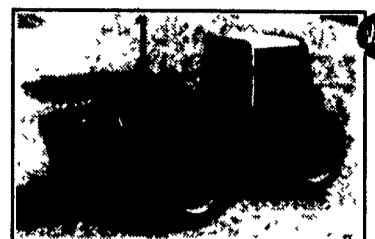
IH 1086 Tractor, 1976 Yr., 20 8-28, 2 Hyd Valves, 540/1000 PTO, Cab w/AC, Heat, Radio (W9190)



CIH 485 2WD Tractor 42 HP Diesel, 1990 Yr, 4074 Hrs, 14.9x28 Tires New, Shuttle Trans, 540 PTO, 1 Hyd. Valve, 3 Pt Hitch (20673)



IH 656 Tractor, 6250 Hrs., Hydro Trans., 2 Valves, 15.3x38 Tires, Diesel Eng. (20269)



IH 3388 2+ Tractor, 1979 Yr., 2724 Hrs, TA Good, 16.9x38 Tires, Rear Duals, 540/1000 PTO, 3 Pt Hitch (20744)

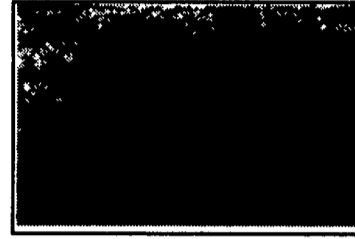
## USED TILLAGE



DMI Tiger II Subsoiler, 7 Shank 15' 10" Tiger Points, Auto-Spring Trip Price \$9500 (20048)



Krause 3118 Landsman 18' Working Width, Rear Hitch, 5 Row Spike, Tandem Axle Center (T1376)



Brillion Chisel Plow 9 Shank (20726)

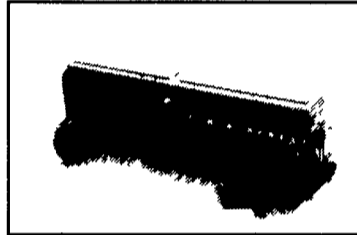


## USED FORAGE

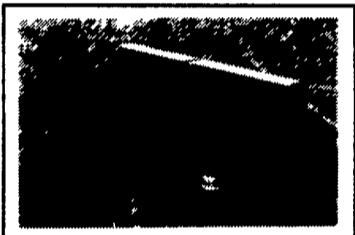


Dron Blower, Model S45, Good Cond. (20572)

## USED DRILLS



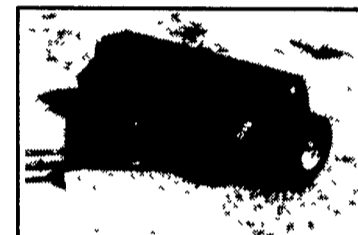
GP 15' 3 Pt Drill 26x7, 13" DD Openers, 4" Press wheels, 700 Ac Use (V8486)



GP 15' Drill, 3 Pt Hitch, 26x7 DD Openers (V9436)



JD 455 Folding Drill, 24' Conven. Grass Seed Attach., Markers, DD Openers w/Pw, Planted 1500 Ac. (20183)



CIH 5100 Drill, 24x6, DD Openers, Hyd. Cyl, 3x13 P.W. (V1193)



Hesston Forage Harvester, Model 7155 w/ 2 R Cornhead, Hay Pick Up (20571)

### JUST TRADED

- CIH 1660 Combine (20553)
- JD 6620 Combine (20573)
- JD 5460 Forage Harvester (20576)
- GP 30' Conventional Drill (20439)
- IH 5100 Drill (20469)
- Unverferth Rolling Harrow H (20481)
- IH 1480 Combine (20624)
- Krause 4129 Field Cultivator (20667)
- Versatile 276 Tractor (20687)
- Keweenaw Field Cultivator (20707)
- Krause 2410-20' Disc (20709)
- Farmall C Tractor (20731)
- John Deere 750-15' NT Drill (20738)
- John Deere 750-15' NT Drill (20739)
- John Deere 235-21' Disc (20741)
- IH 3388 2+2 Tractor (20744)

### USED TRACTORS

- CIH 485 Tractor 1990 Yr 4765 Hrs 9.5Lx15 & 14.9x28 New Tires Rops 540 PTO 3 Pt Shuttle Trans Block Heater (20673)
- IH 656 Tractors 6252 Hrs 15.5x38 & 9.5x14 Tires WFE 540/1000 PTO Hydro Gear 2 Hyd Valves (20269)
- IH Tractor 161 HP 20.8x38 Tires 3 Pt Cab 2 Hyd Valves (W8757)
- IH 5488 2WD Tractor 1982 Yr 3186 Hrs 20.8x38 & 14.9x16 Tires Cab w/AC Heat WFE 3 Pt T/A, 10 Bolt Hub (20603)
- IH 5488 2WD Tractor 1982 Yr 4327 Hrs Cab w/AC 14.9x16 & 20.8x38 Tires WFE 1000 PTO 3 Hyd Valves (20588)
- CIH 5140 MFD Tractor 1991 Yr 1600 Hrs Cab w/AC/Heat 14.9x24 & 18.4x38 Tires 540/1000 PTO 3 Pt Power Shift Top Link Calcium Cold Start, Am/Fm Radio (20482)
- IH 1086 Tractor 1980 Yr 5000 20.8x38 Tires 2 Hyd Valves 540/1000 PTO (W1157)
- IH 3588 Tractor 150 HP 1979 Yr (W1297)
- IH 656 Tractor 1967 Yr 5428 Hrs 3 Pt Hitch 2 Valves (W9823)
- CIH 7120 2W Tractor 1992 Yr 1650 Hrs 18.4x42 Tires 3 Hyd Valves 540/1000 PTO 12 Wts (20243)
- Steiger 251 Single 30 5x12 Tires (1713)
- IH 140 Tractor w/ Snow Blade Tire Chains (20367)

- CIH 5140 MFD Tractor (100 Hp), 1991 Yr, 1600 Hrs, PS Transmission, 18.4x38 Rear, 14.9x24 Ft 3 Hyd Valves, Air Seat (20482)

- IH 1086 Tractor, 1977 Yr, 11 00x16 & 20 8R38 Tires, Radio, Wt Brkt, REar Wts, 2 Hyd Vavles, Cab w/Heat/AC, 3 Pt, 540/1000 RPM, Top Link (20331)

- IH 1086 Tractor, 1976 Yr, 4567 Hrs, 20 8x38 Tires 2 Hyd Valves, 540/1000 PTO, Cab w/AC, Heat, Radio (W9190)

- Versatile 256 4WD Tractor, 1985 Yr, 3300 Hrs, 16 9x28 Tires, Diesel, Cab w/Heat, AC, 540/1000 PTO, 3 Pt, Hydro, Top Link, 3 Hyd Valves w/Loader (20592)

- IH 826 Tractor, 5000 Hrs, WFE, 3 Pt, 2 Valves (20633)

### USED TILLAGE

- DISC**
- IH 500 Disk, Standard, 13 Cut, 15' Trans 10' Spacing, Blades 18" Front/20" Rear, Scrapers, Cyl/Hoses, Center Duals (20657)

- Krause 2413 Disc, 26', 13 4' Trans Width, Spacing 9' Front/10' Rear, Rockflex, Blades 20 Front/22" Rear (20668)

- IH 470 12 Disc, 8' Spacing, Blades - 17 Front, 17 1/2 Rear (20461)

- Kr 4927 Rockflex Disc, 25' Cut Width 9' Spacing, 17 Blades (T20299)

- NH TD 200 Disc, 12' Cut H D Rockflex Gangs 21 Blades (T1207)

- JD 220 Disc 20 Cut Width, 13' Transport \$3,000 (12035)

- Krause 2413 Rockflex Disc, 23' Cut Width, H D Cutting Disc 10' Blade (T9552)

- JD 235 Disc Dura-Cushion 21 Cut Width 9 Spacing Blade Size 18" FTG 20' R (T1027)

- IH 770 Offset Disc (20012)

- IH 770 Disc, 20', 24' Blades, 10 5' Spacing, 11Lx15 Tires, Scrapers, Cyl/Hoses, Center Duals Furrow Fillers (20403)

### OTHER

- Dunham Lehr 25' Cultimulcher, Danish Shanks, 14' Trans Width, 20" Packers Center Duals, Hyd Lift, Hyd Wing Fold (20480)

- IH 12 Field Cultivator (20661)

- IH 720 Plow 5-16" w/Coulters (T9527)

- IH 720 Plow 5-18" (T8769)

- WR Field Cultivator, 24' Width Hyd Fold (12820)

### USED MISC.

- C T Header Gear, Price \$950 (20197)
- Yale 80UF Fork Lift (V1483)

### USED COMBINES

- AC Gleaner L2 Combine, 1978 Yr, Hydro, Monitor, AHHC w/6RCH, 16 SPF (U1043)
- GL L3 Combine, 3111 Hrs, 4WD, w/320 Flex Price \$29,900 (13075)

- MF 550 Combine, 1980 Yr, 1475 Hrs, Var Speed Trans, AHC, Chopper, 4 RN Cornhead, 13' Flex, Opt Ex (20230)

- MF 550 Combine, 4R Wide Cornhead, 13' Platform (U9184)

- CIH 1660 Combine, 1987 Yr, 2135 Hrs, 30 5x32 Tires, Std Rotor, AHC, Feeder Rev, Chaff Spreader, Uptime Done 1996 (20325)

- JD 7720 Combine, 2WD, 1980, 2700 Hrs (U9841)

- JD 7700 Combine, 1977 Yr 4000 Hrs Hydro, 23 1x26 Tires, AC/Heat (U9639)

- JD 6600 Combine, 1976 Yr, Hydro (U9922)

- IH 1440 Combine, 1979 Yr 5875 Hrs, 28Lx26 Tires FT 18 4x16 1 Tires RR, AHC AM/FM (U9518)

- IH 1480 Combine, 1984 Yr, 3587 Hrs, 30 5x32 Tires, Spec Rotor, GLM, AHC (20240)

- IH 1440 Combine, 1979 Yr (U9712)

- CIH 1660 Combine, 1991 Yr, 2500 Hrs, Spec Rotor, Rock Trap, Feeder Rev, GLM, AHC, For/Aft Reel, Field Tracker (20193)

- IH 1480 Combine, 1983 Yr, 5000 Hrs, Spec Rotor (U1001)

- IH 715 Combine, 1976 Yr (20357)

- CIH 1660 Combine, 1986 Yr, 6021 Hrs, 24 5x32 & 18 4x16 1 Tires, Spec Rotor, Rock Trap, Fdr-Rev, GLM, AHC, Fdr cutoff, Reel to Ground, Fore & Aft, Radio (20426)

- CIH 1660 Combine, 1987 Yr, 2679 Hrs, Field Tracker, 30 5x32 Tires, 3rd Cyl, Feeder-Reverser, Spec Rotor, Hyd Reel Fore & Aft, Rock Trap, Reel to Ground, AHC (U1260)

- CIH 1680 Combine, 1990 Yr, 1900 Hrs, Long Sieve, Rock Trap (U1219)

- JD 9600 Combine, 1993 Yr, 2500 Hrs, 30 5x32 & 14 9x24 Tires, Rock Trap, Feeder-Reverser, Grain Loss Monitor, Fore/Aft Reel, AHC, Reel to Ground (20098)

- JD 6600 Combine 1977, 3041 Hrs, Sidehill, 23 1x26 Tires (U9764)

- JD 8820 Combine, 1983 Yr (20550)

### USED HAY & FORAGE

#### BALERS

- JD 336 Baler w/Kicker (U9859)
- CIH 8570 Baler, 1995 Yr (20465)
- JD 346 Baler w/Kicker, Super Sweep Pickup (U1424)

#### MOWER CONDITIONERS

- IH 1490 Mower Conditioner, 12' Cut, Titor Rolls, Hydro-Swing Hitch (U9857)
- Vicon KM 321 Disc Mower Cond 10 1/2' Cut (U9731)
- CIH 812 Mower Conditioner w/Titor Rubber, 11Lx15 Tires, High Skid Shoes (20467)

#### MOWERS

- Woods 120 mower, 10' offset (U6970)
- Bush Hog 20' Batwing 1000 PTO, Laminates Tires, Stump Jumper (V9289)

#### OTHER

- NH 28 Blower (U1137)
- Hesston 7155 Forage Harvester (20571)
- Dron Blower (20572)
- CIH 8830 Windrower w/12' Auger Header (U9799)

### USED DRILLS & PLANTERS

#### DRILLS

- GP 24' NT Drill, 1996 Yr, 800 Acres Folding, 7 1/2" Spacing, 38 Rows, 3x13 Press Wheels, Cyl/Hoses, D D Openers, Folding Walkboard, Markers, Monitor (20651)
- IH 5100 21x7 Drill, 7" Spacing w/Fert (V9748)
- GP 15' NT Drill w/Coulter Hitch, Rebuilt IN 5-96 (V1307)
- GP 10' NT Drill, 7 1/2 Spacing, 2700 Acres, Wt Bar & Brackets, Gradd Seed Attach (20143)
- IH 510 Drill, 21x7 D D Openers, Press Wheels (V1236)
- CIH 5100' 21x7 Drill, Conventional, Press Whls, Walkboard (20618)

#### PLANTERS

- CIH 900 Planter, Liquid Fert, 6 Row-30" Insecticide, Chain & Rock Guards (20548)
- IH 800 Planter, 12 Row (20590)

All New & Used Products  
Backed By  
Hooper Parts & Service  
**(717)768-8231**

**HOOPER**  
C. B. HOOPER & SON INC.  
INTERCOURSE, PA