

### N.E. Weekly Shell Egg Report

April 22

Report Supplied by USDA

PRICES PAID PER DOZEN GRADE "A" BROWN EGGS IN CARTONS DELIVERED TO RETAIL STORES:

|               | EX. LARGE | LARGE     | MEDIUM  | SMALL   |
|---------------|-----------|-----------|---------|---------|
| MAINE         | 1.06      | 1.00      | .83     | .67     |
| NEW HAMPSHIRE | .99-1.03  | .93-.97   | .76-.80 | .60-.64 |
| MOSTLY        | 1.01-1.02 | .95-.96   | .78-.79 | .62-.63 |
| RHODE ISLAND  | 1.02-1.06 | .96-1.00  | .79-.83 | .63-.67 |
| MOSTLY        | 1.02      | .96       | .79     | .63     |
| VERMONT       | 1.09-1.10 | 1.03-1.05 | .85-.86 |         |
| MOSTLY        | 1.09      | 1.03      | .86     |         |

#### LANCASTER FARMING .. STAFF ..

Everett R. Newswanger  
Managing Editor

Lou Ann Good, Staff

Andy Andrews, Staff

Vernon Achenbach Jr., Staff

Ephrata Office Phone

(717) 626-1164

#### NEWS CORRESPONDENTS

Joyce Bupp, York County  
Seven Valleys (717) 428-1865

Carolyn Moyer, Bradford County

Tloga & Susquehanna

Roaring Branch (717) 324-2482

Randy Wells, Indiana

Marion Center (412) 397-2529

Judith Patton, Union

Mifflinburg (717) 966-4770

Gail Strook, Mifflin

Huntingdon & Juniata

Belleville (717) 935-5675

Linda Williams, Bedford,

Bedford (814) 623-5745

Gay Brownlee, Somerset

Salisbury (814) 662-2127

David Hiebert, Westmoreland

Scottsdale (412) 887-5929

James Martin, Mercer

Sandy Lake (412) 376-2682

Beth Miller, Cumberland

Newville (717) 776-6571

Lois Szymanski, Maryland

Westminster (410) 848-5241

Karen Butler, Maryland

Frederick (301) 698-5436

#### Heinsey's Poultry

Roots, East Petersburg

Tuesday, April 22, 1997

Report supplied by USDA

Muscovy Ducks, Drakes: 1.06-1.28.  
Muscovy Ducks, Hens 1.30-1.56.  
Pekin Ducks, not enough.  
Red Fowl: 4-4.5# .30-.48, 5-6# .40-.64.  
Crossbred Fowl 5-9# .30-.72.  
Crossbred Roosters 4-6# .60-1.32, 7-11# .60-1.18.

Guinea Fowl 1.70-2.20.  
Banty Roosters 4.00-7.00 each.  
Banty Hens 2.50-4.25 each.  
Leghorn Hens .10-.18.  
Leghorn Roosters, not enough.  
Silkies 2.50-3.25 ea.  
Geese 9-14# .30-.54.  
Pigeons 2.00-2.75 ea.  
White Pigeons 5.50-6.75 ea.  
Rabbits 4-6# 1.40-1.72, 7-11# 1.40-1.68.  
Bunnies 1.50-4.00 ea.  
Guinea Pigs 1.00-4.50 ea.  
Goats 45.00-70.00 ea.  
Kid Goats 25.00-45.00 ea.  
Doves 5.00-6.50 ea.  
Chukars, not enough.  
Pullets 4-6 lbs. .60-.74.  
840 coops.

#### E. PA & NJ Poultry

APRIL 21, 1997

Majority prices were unchanged to slightly higher than a week earlier. Demand was moderate to good. Offerings were generally in a range of short to barely adequate. Finished products sales remained steady at unchanged values.

HEAVY TYPE HENS (7 POUNDS AND UP) \* FINAL PRICE, CENTS PER LB., GENERALLY FOR SLAUGHTER THE WEEK OF 21-APR-97 RANGE MAJORITY WTD AVG AT FARM BUYER LOADING 14-22 CENTS/LB. 16-17.5 17.46 AT FARM PRODUCER LOADING TOO FEW TO REPORT FOB PLANT TOO FEW TO REPORT \* WEIGHTS UNDER 7 LBS. SUBJECT TO DISCOUNT.

#### Hackettstown Poultry & Egg

Hackettstown, N.J.

Report Supplied by Auction

Tuesday, April 22, 1997

Report Supplied by Auction

HEAVY FOWL .65-1.35.  
PULLETS 5.00.  
GEESE .45.  
BANTAMS EACH 5.75.  
ROOSTERS .80-1.50.  
BUNNIES EACH 1.00-4.00.  
DUCKS .80-1.35.  
RABBITS 1.00-1.95.  
PIGEONS EACH 2.50-5.75.  
GUINEAS EACH 5.00-8.50.  
EGGS: WHITE EXTRA LARGE & JUMBO .60-.85, LARGE .68-.75, MEDIUM .56. BROWN EXTRA LARGE & JUMBO .85-.91, LARGE .83-.88.

#### HAY, STRAW & GRAIN SALE

Every Thursday  
at 12 NOON

Vintage Sales  
Stables, Inc.  
(Rt. 30, 10 miles east  
of Lancaster  
in Paradise, PA)

For info.  
(717) 442-4181 bus.  
(610) 458-8518 home

### Weekly New York Egg Market Northeast Quotes

|                           | From April 18-24 |      |       |      |        |
|---------------------------|------------------|------|-------|------|--------|
|                           | FRI.             | MON. | TUES. | WED. | THURS. |
| WHITE                     |                  |      |       |      |        |
| JUMBO                     | .79              | .79  | .79   | .79  | .79    |
| EX. LARGE                 | .79              | .79  | .79   | .79  | .79    |
| LARGE                     | .76              | .76  | .76   | .76  | .76    |
| MEDIUM                    | .66              | .66  | .66   | .66  | .66    |
| PULLETS                   | .59              | .59  | .59   | .59  | .59    |
| OFF GRADE                 | .64              | .64  | .64   | .64  | .64    |
| BROWN                     |                  |      |       |      |        |
| EXTRA LARGE               | .85              | .85  | .85   | .85  | .85    |
| LARGE                     | .83              | .83  | .83   | .83  | .83    |
| MEDIUM                    | .72              | .72  | .72   | .72  | .72    |
| UNDERGRADES<br>AND CHECKS | .30              | .30  | .30   | .30  | .30    |

BREAKING STOCKS: MON. 42-44 LBS. .36-.38, 48-50 LBS. .43-.45, 50 LBS. AND UP .45-.46.

#### New York Egg Market

APRIL 23, 1997

Prices to retailers were unchanged. The market tone was steady. Demand ranged light to good, mostly moderate. Supplies were adequate or available with mediums and smalls occasionally difficult to locate.

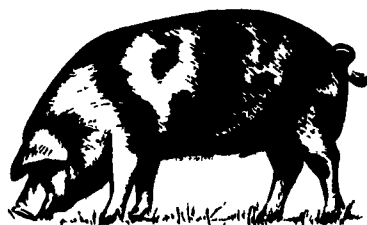
PRICES TO RETAILERS, SALES TO VOLUME BUYERS, USDA GRADE A AND GRADE A, WHITE EGGS IN CARTONS, DELIVERED STORE DOOR, CENTS PER DOZEN.

RANGE EXTRA LARGE 74-76  
LARGE 71-74 MEDIUM 61-64

#### National Egg Market

APRIL 23, 1997

Prices were unchanged. The market tone was generally steady. Demand covered the full range, and was mostly moderate. Supplies were adequate or available with large still the most available, and small sizes were sometimes tight. Breaking stock supplies were adequate from regular sources, and additional offerings received limited interest. Offerings of light type fowl were adequate for full plant schedules.



#### LEBANON VALLEY LIVESTOCK MARKET, INC.

1 mile East of  
Fredericksburg  
along Rt. 22

Every Tues. and  
Fri. (Starting  
Jan. 3) at 1:30 pm

Cattle Sale  
2nd & 4th Tues.

Special  
Fed Cattle Sale

Dave Brubaker  
(717) 865-2881

#### Pressure Washing

- Poultry Houses • Hog Barns
- Dairy Barns • Veal Pens

Reliable Service Low Hourly Rate  
Free Estimates We Will Bid Jobs  
References Available

Barry L. Garber • 717-367-3649

## Heritage

Providing Optimum  
Performance Management  
and Investment Services  
to the Egg Layer Industry

RD #1, Box 213 • Annville, PA 17003  
717-867-8366

#### Northeast Agri Systems Your Authorized Distributor

CHORE-TIME

- Cage Systems
- Poultry & Swine Feeding
- Bins & Augers

Shenandoah

- Space Heaters
- Incinerators
- Brooders
- Nests

#### HIRED-HAND

Agricultural Heating and Ventilation Systems  
HEATERS AND CONTROLS

Poultry, Dairy & Swine  
Buildings & Equipment

TOLL FREE CUSTOMER SERVICE  
NUMBER: 1-800-673-2580



Northeast Agri Systems, Inc.  
Flyway Business Park  
139A West Airport Road  
Litzitz, PA 17543  
Ph (717) 569-2702



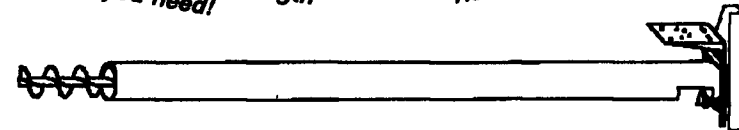
Dekmarva Store  
305 University Ave  
Fredericksburg MD  
(formerly Long Lumber)  
1-800-735-6361

Manufactured by  
**automatic farm systems**  
608 E. Evergreen Road, Lebanon, PA 17042  
Phone: 717-274-5333

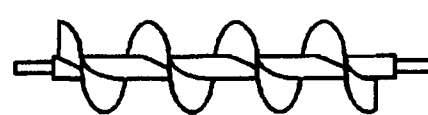
## Augers

Custom made to the length  
you need!

Heavy Duty Construction

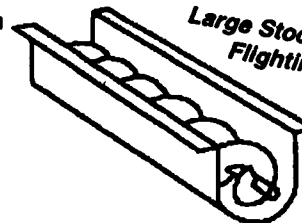


Galvanized - Carbon - Stainless



Flighting Available in  
All Sizes

Large Stock of Replacement  
Flighting & Parts



U-TROUGHS

#### AUGER INSTALLATIONS

- ✓ In feedlots
- ✓ In drying systems
- ✓ Commercial applications
- ✓ At feedmills or elevators
- ✓ Around poultry & dairy barns
- ✓ At your grain bins or bulk tanks
- ✓ Replacement Augers for feed mixers and farm equipment

#### Standard Auger Specifications

|                  | 4"    | 6"    | 8"    | 10"  |
|------------------|-------|-------|-------|------|
| Tube Gauge       | 16    | 14    | 14    | 12   |
| Flight Thickness | 3/16" | 3/16" | 3/16" | 1/4" |
| Bu./Hr.          | 250   | 850   | 2000  | 3000 |
| RPM              | 431   | 431   | 431   | 431  |

Call Us For Custom Specifications

#### WE CUSTOM MANUFACTURE.

Painted, Galvanized and Stainless Steel  
Fabrication, Feed Bins, Feeders, Hoppers, Covers, Dump Pits,  
Augers, and Controls Systems to Automate Your Operation.

#### SUBSCRIPTION INFORMATION

Subscription Price:

\$28.00 per year; \$55.00- 2 years

\$38.00 per year outside of:

PA, NJ, MD, DE, NY, OH, VA & WV

\$75.00 - 2 Years

Non-Refundable

Lancaster Farming (ISSN 0023-7485) is published weekly for \$27.50 per year; \$53.00 - 2 years by Lancaster Farming, P.O. Box 609 1 E. Main Street, Ephrata, PA 17522. Periodicals postage paid at Ephrata, PA 17522. POSTMASTER: Send address changes to LANCASTER FARMING, 1 East Main Street, P.O. Box 609, Ephrata, PA 17522

Phone: Litzitz (717) 626-1164 or Ephrata (717) 733-6397, Lancaster (717) 394-3047.  
FAX 717-733-6058

For address change form or new subscription see near Mailbox Markets.

Members of National Association of Agricultural Journalists Pa Newspaper Publishers Association, and National Newspaper Association. National Advertising Representative J.L. Farmakis, Inc. Phone (203) 966-1746

#### PUBLISHER'S LIABILITY FOR ERROR

The publisher shall not be liable for slight changes or typographical errors that do not lessen the value of an advertisement. The publisher's liability for other errors or omissions in connection with an advertisement is strictly limited to publication of the advertisement in any subsequent issue or the refund of any monies paid for the advertisement.