



HOG MARKETS

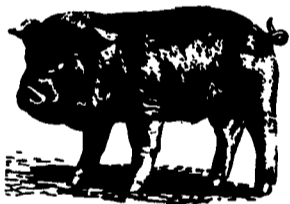
Hatfield Direct

Hatfield, Pa.
Reports Supplied by Packer
For Monday, April 21, 1997
And Wednesday, April 23, 1997
MONDAY: 6325
LAST MONDAY: 6542.
TREND: COMPARED TO LAST
MONDAY: 2.34 HIGHER.
55.5%-56.4% 216-269 LBS. BASE
57.67.
56.5%-58.4% 216-269 LBS.
58.46-59.25.
58.5%-60.4% 216-269 LBS.
60.04-60.84.
FEW 216-269 LBS. 61.63.
GOOD'S RECEIVING
MONDAY CASH: 57.75

WEDNESDAY
TOTAL HOGS: 6339
LAST WEEK: 6532
TREND: COMPARED TO LAST WED-
NESDAY: 1.75 HIGHER.
55.5%-56.4% 216-269 LBS.: BASE:
57.25.
56.5%-58.4% 216-269 LBS.:
58.04-58.83.
58.5%-60.4% 216-269 LBS.:
59.62-60.42.
FEW 216-269 LBS.: 61.21.

Middleburg Hog Report

Middleburg, Pa.
April 21 & 22
Report supplied by auction
233 HEAD. BULK OF SUPPLY SOLD
ON MONDAY AND REPORTED BY
THE ACUTION. BARROWS AND
GILTS 1.50 HIGHER. BARROWS AND
GILTS STRONG TO 1.50 HIGHER.
BARROWS AND GILTS US#1-2 225-260
LBS. 53.75-56.00, US#1-3 225-290 LBS.
50.00-53.10; US#2-3 175-215 LBS.
45.00-49.00.
SOWS: US#1-3 350-495 LBS.
39.50-43.50, 500-640 LBS. 46.25-48.75;
US#2-3 275-350 LBS. 39.50-40.75,
MEDIUM 255-425 LBS. 31.00-35.50.
BOARS FEW 225-245 LBS.
41.00-45.00.



**FEEDER
CATTLE**
Tues., April 29
7:30 P.M.
Bring a Load - Buy a Load
CARLISLE
Livestock Market, Inc.
Exit 12 off I-81 Turn South
(717) 249-4511 or
evenings, Jim
(717) 249-2359

New Holland Feeder Pigs

New Holland, PA
Wed., April 23, 1997
Report Supplied by USDA
TODAY 594 HEAD
LAST WEDNESDAY 723
LAST YEAR 570 HEAD
TREND: COMPARED TO LAST
WED. FEEDER PIGS 30.00-40.00 HIGH-
ER. SUPPLY INCLUDED 59 PERCENT
SOLD FOR SLAUGHTER. ALL PIGS
WEIGHED ON ARRIVAL AND SOLD
BY THE HUNDRED WEIGHT.
US#1-2: 39 HEAD 22-27 LBS.
150.00-155.00, WEIGHTED AVERAGE
25.38, WEIGHTED PRICE 151.44; 50
HEAD 30-39 LBS. 135.00-175.00,
WEIGHTED AVERAGE 33.70,
WEIGHTED PRICE 148.87; 40 HEAD
43-48 LBS. 135.00-155.00, WEIGHTED
AVERAGE 44.38, WEIGHTED PRICE
144.23; 40 HEAD 53-58 LBS.
120.00-155.00, WEIGHTED AVERAGE
57.00, WEIGHTED PRICE 128.14; 9
HEAD 68 LBS. 90.00.
UTILITY: 49 HEAD 21 LBS.
125.00-140.00, WEIGHTED AVERAGE
21.00, WEIGHTED PRICE 136.50.
SLAUGHTER: 17 HEAD 22-27 LBS.
185.00-195.00, WEIGHTED AVERAGE
25.59, WEIGHTED PRICE 192.47; 27
HEAD 34 LBS. 160.00.
AS IS: 61 HEAD 19-31 LBS.
100.00-115.00, WEIGHTED AVERAGE
25.41, WEIGHTED PRICE 104.79; 171
HEAD 35-73 LBS. 30.00-65.00,
WEIGHTED AVERAGE 56.25,
WEIGHTED PRICE 49.20.
ALL PIGS CONSIGNED TO WED.
FEEDER PIGS SALE MUST ORIGI-
NATE FROM A QUALIFIED NEGA-
TIVE OR MONITORED HERD.

New Wilmington Graded Feeder Pig Sale

New Wilmington, PA
April 18, 1997
FEEDER PIGS 285. 46.0 LBS. PER
PIG; 136.24 PER HUNDRED WEIGHT.
ALL PRICES PER HUNDRED WEIGHT.
US#1-2: 30-40 LBS. 150.00-167.50,
40-50 LBS. 125.00-160.00, FEW 200.00;
50-60 LBS. 125.00-190.00; 60-70 LBS.
105.00-160.00.
US#2: 20-30 LBS. 115.00-130.00; 30-40
LBS. 130.00-175.00; 40-50 LBS.
140.00-150.00; 50-60 LBS. 115.00-140.00.
US#2-3: 20-30 LBS. 80.00-90.00, 30-40
LBS. 110.00-125.00, 40-50 LBS. FEW
100.00-125.00.

New Holland Hogs

NEW HOLLAND, PA
APRIL 21, 1997
TODAY 771
LAST MONDAY 1195
LAST YEAR 1231
TREND: Compared to last Monday bar-
row and gilts 2.00-2.50 higher.
BARROWS AND GILTS: US 1-2
220-275 lbs 57.00-57.60 Few 190-215 lbs
55.50-56.75 US 1 225-255 lbs 57.75-58.25
US 2-3 220-270 lbs 55.25-56.00 Few
295-310 lbs 51.00

Lancaster Hogs

Lancaster Stockyards
Wednesday, April 23, 1997
Report supplied by USDA
HOG MARKET TODAY 674 HEAD;
LAST WEDNESDAY 744; LAST YEAR
1478.
BARROWS AND GILTS: .50-.75
LOWER.
US#1-2 220-260 LBS. 56.50-57.25;
US#1-3 215-270 LBS. 55.00-56.00.
SOWS STEADY. US#1-3 300-500
LBS. 42.00-43.00; 500-625 LBS.
46.00-47.00; MEDIUM 1-2 300-450 LBS.
37.00-38.00.
BOARS: 300-600 LBS. 37.00-38.00.

Indiana Hogs

SPRINGFIELD, IL
APRIL 23, 1997
Tuesday actuals 28,800 Week to date
85,100 Today's estimate 27,000 Same pd
week ago 83,900 Wednesday week ago
29,100 Same pd year ago 128,400 Wed-
nesday year ago 43,000
Barrows and Gilts: Near Steady Late.
Demand moderate on a light to moderate
movement.
Country: Plants: US 1-2 230-260 lbs.
54.00-55.50 Few 53.50 55.00-56.50 2-3
220-260 lbs. 50.00-54.00 210-230 lbs.
45.00-50.00
Sows: Mostly Steady. US 1-3 300-450
lbs. 40.00-43.00
450-500 lbs. 43.00-44.50 500-600 lbs.
44.00-46.50 Few over 600 lbs. 47.00-48.00
Boars: 38.00-40.00
Eastern Cornbelt Direct Hog Trade Hot
Carcass Value Information Trend: Steady to
1.00 Lower, mostly Steady to .50 Lower
Estimated receipts 29,600 as of 11:00 am
Lean Value Evaluation Summary: % Lean
43-44 45-46 47-48 49-50 51-52 53-54
55-56 Lean Value * Carcass wt* 65.19 *
70.32 * 73.25 * 73.25 * 76.18 * 77.50 *
78.75 * 170-191# * 74.75 * 76.75 * 76.75
* 77.01 * 81.75 * 83.75 * 83.75 * Backfat:

10th rib <1.39 * <1.24 * <1.14 * <.99 * <
.89 * <.74 * <.59 * Last rib <1.40 * <1.29
* <1.19 * <1.09 * <.99 * <.79 * <.59 * SB
51.00-55.00 SG 53.50-55.50 SL
50.00-53.50 SZ 45.00-48.00 SC
55.00-56.50 SH 52.50-54.50 SW
40.00-43.00 TA 38.00-40.00 SD
54.00-55.50 SJ 45.00-50.00 SX
43.00-44.50 SF 50.00-54.00 SK
50.00-54.00 SY 44.00-46.50

Diffenbach Auction Center

New Holland, Pa.
Monday, April 21, 1997
Report Supplied by Auction
TOTAL LOADS: 214.
ALFALFA: 115.00-235.00.
MIXED HAY: 60.00-245.00.
TIMOTHY: 100.00-190.00.
CLOVER: 110.00.
MEADOWGRASS: 65.00.
ORCHARDGRASS: 115.00-195.00.
STRAW: 85.00-165.00.
STUBBLE HAY: 70.00.
EAR CORN: 92.00-120.00.
CORN FODDER: 45.00.
SOYBEAN STALKS: 22.00.
OATS: 2.30-3.10.
HAYLAGE: 56.00.

Good's Hay

Leola, Pa.
Wed., April 23, 1997
Report Supplied by Auction
TOTAL LOADS: 95.
STRAW: 90.00-130.00.
ALFALFA: 87.00-225.00.
TIMOTHY: 92.00-175.00.
GRASS: NONE.
CORN: 90.00-100.00.
MIXED HAY: 60.00-220.00.
OATS: 2.70 BU.

The Windmill

Penn Yan, N.Y.
Friday, April 18, 1997
Report Supplied by Auction
20 LOADS.
GRASS: 1ST CUTTING 60.00-106.00.
CLOVER: 1ST CUTTING 81.00, 2ND
CUTTING 115.00.
ALFALFA TIMOTHY: 1ST CUTTING
95.00, 2ND CUTTING 145.00.
ALFALFA: 2ND CUTTING
95.00-132.00.
STRAW: 123.00-130.00.
BROOM GRASS: 1.75-2.00 BALE.
LARGE ROUND BALES 18.00-20.00
ACH.
TIMOTHY SEED: 20.00-21.00 BU.
BEGINNING MON., MAY 2 HAY
AUCTION, 9 A.M. SHARP. PRODUCE
AUCTION 10 A.M.

Middleburg Hay

Middleburg, PA
Tues., April 22, 1997
Report supplied by PDA
89 LOADS TOTAL, 53 LOADS OF
HAY.
ALFALFA: 10 LOTS, 110.00-175.00.
MIXED HAY: 32 LOTS, 85.00-170.00.
TIMOTHY: 7 LOTS, 115.00-125.00.
ORCHARD GRASS: 4 LOTS
115.00-175.00.
STRAW: 8 LOTS, 60.00-107.50.
EAR CORN: 15 LOTS, 82.50-95.00.
OATS: 12 LOTS, 2.75-3.25 BU.

Regional Hay

April 21, 1997
Eastern Pa.
HAY & STRAW MARKET FOR
EASTERN PA. (ALL HAY NO. 2 AND
BETTER. PRICES PAID BY DEALERS
AT THE FARM & PER TON.) HAY AND
STRAW STEADY.
ALFALFA 90.00-150.00 FEW
REPORTED 170.00; MIXED HAY
75.00-135.00 FEW REPORTED 160.00;
TIMOTHY 80.00-120.00 FEW
REPORTED 140.00; STRAW
60.00-90.00; MULCH 25.00-40.00.
SUMMARY OF LANCASTER CO.
HAY AUCTIONS FOR WEEK ENDING
04/18/97. PRICES PER TON: LOADS:
368 HAY, 67 STRAW & 13 EAR CORN.
ALFALFA 120.00-230.00; MIXED
HAY 90.00-217.00; TIMOTHY
115.00-180.00; STRAW 117.00-157.00;
EAR CORN 100.00-119.00.
SUMMARY OF CENTRAL PA HAY
AUCTIONS FOR WEEK ENDING
04/18/97. PRICES PER TON: LOADS:
238 HAY, 28 STRAW & 21 EAR CORN.
ALFALFA 115.00-175.00; MIXED
HAY 75.00-150.00; TIMOTHY
65.00-132.50; STRAW 60.00-95.00; EAR
CORN 82.00-92.50.

Green Dragon Hay

Ephrata, Pa.
Friday, April 18, 1997
Report Supplied by Auction
92 TOTAL LOADS.
MIXED HAY: 38 LOTS, 70.00-220.00.
ALFALFA: 16 LOTS, 122.00-230.00.
TIMOTHY: 9 LOTS, 132.00-202.00.
STRAW: 16 LOTS, 78.00-162.00.
EAR CORN: 3 LOTS, 101.00 AND
102.00.
ORCHARD GRASS: 6 LOTS,
122.00-180.00.
CORN FODDER: 60.00 LOAD.
OATS: 2.90 BU.
STUBBLE HAY: 65.00 LOAD.
WOOD SHAVINGS: 1.20 BAG.

Kirkwood Hay Auction

Kirkwood, Pa.
Tuesday, April 22, 1997
Report Supplied by Auction
73 LOADS OF HAY.
MIXED HAY: 1ST CUTTING
90.00-167.00, 2ND CUTTING
142.00-199.00.
TIMOTHY: 99.00-200.00.
ALFALFA: 1ST CUTTING
147.00-195.00, 2ND 76.00-260.00, 3RD
CUTTING 127.00-136.00.
CLOVER: 130.00.
BALAGE: 47.00 Ton.
GRASS: 79.00-180.00.
WHEAT STRAW: 102.00-127.00.
BARLEY STRAW: 99.00-128.00.

PENNFIELD GRAIN BANK

Pennfield Offers A
Sound Program For
The Dairy Farmer To
Use His Grain
"Same As Cash" To
Reduce His Monthly
Feed Bill And To
Avoid Having To
Take "Harvest Price"
For His Grain

Prices Week Of 4/28/97
Corn \$3.35 Bu.
Soybeans \$8.35 Bu.
Barley \$3.25 Bu.

- No Storage Charges
- Prices Updated Weekly
- Grain Bank Balance Shown On Each Invoice
- No Hidden Charges

For every ton of qualifying
dairy feed purchased you will
receive one ton of grain bank
hauled at no charge

CUSTOMER SERVICE DEPT
OPEN 24 HOURS A DAY

Call
1-800-732-0467
penfield feeds



INDEX

Four Sections

DEPARTMENTS

Editorial A10
Farm Calendar A10
Farm Forum A10
Futures A16
Mailbox Markets B20
Sale Reports B25
Public Auction Register B42
Classified Ads C 9, D 2
Business News C 4

FEATURES

Bottle Bill A21
Corn Field Day A23
Distinguished Alumni A26
Earth Day A30
Farm Women President B 2
EFNEP Exchange B11
Bone Up On Calcium B12
Log Cabin Llamas B14
Frederick Farm Women B18
Animal Survey C 6

COLUMNS

Now is the Time A10
On Being A Farm Wife B 4
Family Living Focus B 5
Consuming Thoughts B 7
All Garden's B 9
Ida's Notebook B16
Poultry Pointers C 3, C 5

HOME AND YOUTH

Homestead Notes B 2
Home On The Range B 6
Cook's Question Corner B 8
Kid's Korner B10
You Ask, You Answer B16
FFA Happenings B19
4-H Happenings B19

DAIRY

Dairy Week A20
Jersey Sale A25
DHIA Focus A35
Cow Longevity A38

HERE TODAY • HERE TO STAY
For Buying or Selling Livestock
Call Dunlaps at (717) 397-5136

Slaughter Cattle
Every Monday 9:30 AM

Graded Sow & Boar Sales
May 6 & 20

Feeder Cattle
EVERY FRIDAY
DURING APRIL

Receiving
Market Hogs
Wednesday
6:30 AM

Sheep & Goat
Consignments Welcome
for Mondays

New Sheep & Goat Manager
Jim Hunsicker
717-397-5136 or 717-656-4264

(1st & 3rd Tues. of month)
Receiving 6:00 AM to Noon
SALE - 2:00 PM (INDIVIDUALS)
2:30 PM - Large Lots (TELE-AUCTION)

Sows to be graded & weighed in 50 lb increments
PROBLEM SOWS SOLD SEPARATELY

Walter M. Dunlap and Sons
LANCASTER STOCKYARDS
An Old Line Commission Firm Dedicated to
Livestock Marketing for the 21st Century!