



## HOG MARKETS

### New Holland Feeder Pigs

New Holland, PA  
Wed., April 16, 1997  
Report Supplied by USDA  
TODAY 723 HEAD  
LAST WEDNESDAY 359  
LAST YEAR 774 HEAD  
TREND: COMPARED TO LAST WED. FEEDER PIGS 20.00-30.00 LOWER. SUPPLY INCLUDED 33 PERCENT SOLD FOR SLAUGHTER, AND MOST OF THESE WERE AS IS PIGS. ALL PIGS WEIGHED ON ARRIVAL AND SOLD BY THE HUNDRED WEIGHT.

US#1-2: 11 HEAD 18-25 LBS. 90.00-120.00, WEIGHTED AVERAGE 21.82, WEIGHTED PRICE 101.25; 99 HEAD 31-39 LBS. 100.00-115.00, WEIGHTED AVERAGE 34.85, WEIGHTED PRICE 107.83; 74 HEAD 42-49 LBS. 95.00-107.00, WEIGHTED AVERAGE 45.88, WEIGHTED PRICE 101.47; 107 HEAD 50-57 LBS. 95.00-112.00, WEIGHTED AVERAGE 54.86, WEIGHTED PRICE 104.27; 4 HEAD 63 LBS. 107.00.  
US#2: 52 HEAD 27-29 LBS. 75.00-85.00, WEIGHTED AVERAGE 28.27, WEIGHTED PRICE 80.37; 63 HEAD 30-39 LBS. 70.00-90.00, WEIGHTED AVERAGE 34.37, WEIGHTED PRICE 78.59; 33 HEAD 42-47 LBS. 60.00-90.00, WEIGHTED AVERAGE 43.33, WEIGHTED PRICE 69.93.

SLAUGHTER: 61 HEAD 19-26 LBS. 55.00-80.00, WEIGHTED AVERAGE 21.56, WEIGHTED PRICE 64.09; 35 HEAD 35 LBS. 145.00.  
AS IS: 69 HEAD 29-102 LBS. 30.00-95.00, WEIGHTED AVERAGE 49.49, WEIGHTED PRICE 62.91.  
ALL PIGS CONSIGNED TO WED. FEEDER PIGS SALE MUST ORIGINATE FROM A QUALIFIED NEGATIVE OR MONITORED HERD.

### S & J Villari Livestock Feeder Pig Sale

Millsboro, Del.  
April 14, 1997  
Report Supplied by Auction  
458 HEAD  
30-39 LBS. 103.00-140.00; 40-49 LBS. 111.00-135.00; 50-59 LBS. 100.00-130.00; 60-69 LBS. 100.00-120.00; 70-79 LBS. 87.00-90.00.

### Middleburg Hog Report

Middleburg, Pa.  
April 14 & 15  
Report supplied by auction  
250 HEAD. BARROWS AND GILTS STRONG TO 1.50 HIGHER. BARROWS AND GILTS US#1-2 220-250 LBS. 51.50-54.50, US#1-3 220-270 LBS. 45.75-50.10; US#2-3 155-205 LBS. 41.00-42.00.  
SOWS: US#1-3 350-480 LBS. 39.00-43.00, 500-600 LBS. 41.50-44.75, FEW TO 47.00; US#2-3 310-360 LBS. 22.50-34.00.  
BOARS: 325-430 LBS. 20.50-35.50, FEW 600-700 LBS. 36.00-36.50.

### New Holland Hogs

NEW HOLLAND, PA  
APRIL 14, 1997  
TODAY 1195  
LAST MONDAY 1129  
LAST YEAR 1110  
TREND: Compared to last Monday barrow and gilts 1.50-2.25 higher.  
BARROWS AND GILTS: US 1-2 225-255 lbs 54.75-55.25 US 1 220-245 lbs 55.35-56.25 US 1-3 215-260 lbs 53.75-54.75 US 2-3 270-290 lbs 50.25-50.85 US 3-4 280-310 lbs 47.50-48.50

### State Graded Feeder Pig Sale

Carlisle Livestock Market, Inc.  
Friday, April 11, 1997  
RESULTS ON 782 PIGS. TREND: COMPARED TO MARCH 27 STATE GRADED SALE, PIGS WERE ACTIVE; STEADY WITH 40 POUNDERS 15.00 HIGHER, AND 60 POUNDERS 12.00 LOWER. ALL PIGS ARE FROM QUALIFIED OR MONITORED HERDS; THEY WERE WEIGHED ON ARRIVAL AND SOLD BY THE HUNDREDWEIGHT.  
US#1&2: 647 HEAD. 151 HEAD 40-49 LBS. 136.00-156.00; 250 HEAD 50-59 LBS. 130.00-145.00; 198 HEAD 60-69 LBS. 110.00-133.00; 42 HEAD 73-79 LBS. 100.00-108.00; 6 HEAD 82 LBS. 80.00.  
US#2: 118 HEAD. 4 HEAD 37-39 LBS. 130.00; 30 HEAD 42-49 LBS. 111.00-149.00; 44 HEAD 53-59 LBS. 119.00-120.00; 39 HEAD 62-69 LBS. 109.00-110.00; 1 HEAD 110 LBS. 76.00.  
AS IS/UTILITIES: 17 HEAD 55-59 LBS. 21.00-26.00.  
NEXT STATE GRADER FEEDER PIG SALES FRIDAY APRIL 25 AND MAY 9. RECEIVING 7 A.M.-11 A.M. SALE 1:30 P.M. SHARPI

### Lancaster Graded Sow And Boar Sale

Lancaster, Pa.  
Report Supplied by USDA  
For Tuesday, April 15, 1997  
TOTAL HOGS: 110.  
GRADE SOWS 1-3: 5 HEAD 324 LBS. 41.50; 7 HEAD 414-432 LBS. 43.75; 19 HEAD 473-483 LBS. 46.50-46.75; 27 HEAD 524 LBS. 48.00; 9 HEAD 596 LBS. 49.00.  
MEDIUM 1-2: 11 HEAD 407 LBS. 37.50.  
GILTS US#2-3 12 HEAD 339 LBS. 42.85; 4 HEAD 358-425 LBS. 42.50.  
BOARS: 6 HEAD 300 LBS. 37.25; 6 HEAD 630 LBS. 37.75.

### Hatfield Direct

Hatfield, Pa.  
Reports Supplied by Packer  
For Monday, April 14, 1997  
And Wednesday, April 16, 1997  
MONDAY: 6542  
LAST MONDAY: 7367.  
TREND: COMPARED TO LAST MONDAY: 2.00 HIGHER.  
55.5%-56.4% 216-269 LBS. BASE 55.33.  
56.5%-58.4% 216-269 LBS. 56.12-56.90.  
58.5%-60.4% 216-269 LBS. 57.69-58.47.  
FEW 216-269 LBS. 59.26.  
GOOD'S RECEIVING  
MONDAY CASH: 54.75

WEDNESDAY  
TOTAL HOGS: 6532  
LAST WEEK: 7215  
TREND: COMPARED TO LAST WEDNESDAY: 2.42 HIGHER.  
55.5%-56.4% 216-269 LBS.: BASE: 55.50.  
56.5%-58.4% 216-269 LBS.: 56.29-57.07.  
58.5%-60.4% 216-269 LBS.: 57.86-58.64.  
FEW 216-269 LBS.: 59.43.

### Diffenbach Auction Center

New Holland, Pa.  
Monday, April 14, 1997  
Report Supplied by Auction  
TOTAL LOADS: 163.  
ALFALFA: 100.00-295.00.  
MIXED HAY: 65.00-245.00.  
TIMOTHY: 70.00-230.00.  
ORCHARDGRASS: 70.00-157.00.  
STRAW: 130.00-157.00.  
EAR CORN: 85.00-125.00.  
CORN FODDER: 65.00.  
OATS: 3.05.  
WOOD SHAVINGS: 1.90 BAG.  
HAYLAGE: 50.00.



## HAY & GRAIN MARKETS

### Good's Hay

Leola, Pa.  
Wed., April 16, 1997  
Report Supplied by Auction  
TOTAL LOADS: 109.  
STRAW: 110.00-147.00.  
ALFALFA: 90.00-207.00.  
TIMOTHY: 70.00-180.00.  
GRASS: 115.00-185.00.  
CORN: 95.00-122.00.  
MIXED HAY: 55.00-202.00.

### Green Dragon Hay

Ephrata, Pa.  
Friday, April 11, 1997  
Report Supplied by Auction  
103 TOTAL LOADS.  
MIXED HAY: 43 LOTS, 57.00-230.00.  
ALFALFA: 18 LOTS, 137.00-220.00.  
TIMOTHY: 10 LOTS, 117.00-210.00.  
STRAW: 14 LOTS, 120.00-155.00.  
EAR CORN: 7 LOTS, 90.00-106.00.  
ORCHARD GRASS: 8 LOTS, 110.00-207.00.  
CORN FODDER: 64.00.  
STUBBLE HAY: 55.00.

### Westminster Hay

Westminster, Md.  
Tuesday, April 15, 1997  
Report Supplied by Auction  
ALFALFA: 1.50-3.60 BALE, 27.00 AND 125.00 LARGE ROUND.  
TIMOTHY: 97.50, .75-3.30 BALE.  
MIXED HAY: 100.00, .65-2.60 BALE, 21.00-24.00 LARGE ROUND.  
GRASS: 80.00, .75-2.80 BALE, 12.00-25.00 LARGE ROUND.  
STRAW: 1.15-2.35 BALE.

### Vintage Hay

Paradise, PA  
Thurs., April 17, 1997  
Report Supplied by Auction  
ALFALFA: 76.00-177.00.  
TIMOTHY: 120.00.  
MIXED HAY: 79.00-129.00.  
CORN FODDER: 87.00.  
20 LOTS TOTAL.

### Middleburg Hay

Middleburg, PA  
Tues., April 15, 1997  
Report supplied by PDA  
77 LOADS TOTAL, 52 LOADS OF HAY.  
ALFALFA: 102.50-185.00.  
MIXED HAY: 80.00-195.00.  
TIMOTHY: 120.00-132.50.  
STRAW: 8 LOTS, 72.50-95.00.  
EAR CORN: 9 LOTS, 73.00-92.00.  
OATS: 8 LOTS, 3.00-4.30 BU.

### The Windmill

Penn Yan, N.Y.  
Friday, April 11, 1997  
Report Supplied by Auction  
20 LOADS.  
GRASS HAY: 1ST CUTTING 45.00-110.00.  
ALFALFA TIMOTHY: 1ST CUTTING 64.00-89.00.  
ALFALFA: 2ND CUTTING 60.00-136.00.  
CLOVER: 2ND CUTTING 122.00-152.00.  
STRAW: 107.00-120.00.  
BROOM GRASS: 1.75 BALE.  
HAY: LARGE ROUND BALES 19.00-23.00 EACH.  
CLOVER SEED: 45.00 50 LBS.  
BEGINNING MAY 2 HAY AUCTION AT 9 A.M. PLANTS AND PRODUCE 10 A.M.

### Leinbach's Hay

Shippensburg, PA  
April 12 and 15  
Report Supplied by Auction  
97 LOADS.  
ALFALFA: 72.00-215.00.  
MIXED HAY: 64.00-160.00.  
TIMOTHY: 58.00-127.00.  
BROMEGRASS: 97.00-125.00.  
ORCHARDGRASS: 55.00-117.00.  
STRAW: 46.00-96.00.  
EAR CORN: 86.00-118.00.  
OATS: 2.60-3.25.  
MULCH HAY: 5.00-54.00.  
FIREWOOD: 27.00-40.00 LOAD.  
CORN FODDER: 60.00.

### Kirkwood Hay Auction

Kirkwood, Pa.  
Tuesday, April 15, 1997  
Report Supplied by Auction  
94 LOADS OF HAY.  
MIXED HAY: 1ST CUTTING 65.00-190.00, 2ND CUTTING 123.00-212.00.  
TIMOTHY: 54.00-200.00.  
ALFALFA: 1ST CUTTING 90.00-192.00, 2ND 80.00-179.00, 3RD CUTTING 139.00-195.00.  
CLOVER: 111.00-123.00.  
GRASS: 61.00-177.00.  
WHEAT STRAW: 90.00-137.00.  
BARLEY STRAW: 118.00-136.00.  
CORN FODDER: 28.00-42.00.

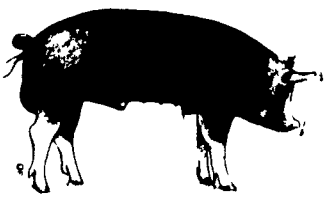
### Dewart Hay

Dewart, PA.  
Monday, April 14, 1997  
Report Supplied by Auction  
HAY: 60.00-162.50.  
STRAW: 80.00-91.00.  
WOOD: 25.00-50.00 LOAD.  
CORN: 77.00-92.00.  
OATS: 2.40-2.75 BU.

**Carlisle Livestock Market, Inc.**  
**GREEK EASTER LAMB/GOAT SALE**  
Tues., April 22<sup>ND</sup> 7 PM  
Receiving 9 AM to 5:30 PM  
Exit 12 off I-81 Turn South  
Market (717) 249-4511  
Jim (717) 249-2359

**HAY, STRAW & GRAIN SALE**  
Every Thursday at 12 NOON  
Vintage Sales Stables, Inc.  
(Rt. 30, 10 miles east of Lancaster in Paradise, PA)  
For info.  
(717) 442-4181 bus.  
(610) 458-8518 home

**PIGS**  
STATE GRADED SALE  
RECEIVING 7-11 AM  
FRIDAY  
APRIL 25  
1:30 P.M.  
AT  
**Carlisle**  
LIVESTOCK MARKET, INC.  
Exit 12 Off I-81 turn South  
(717) 249-4511 or  
Evenings Jim, 249-2359



### PENNFIELD GRAIN BANK

Pennfield Offers A Sound Program For The Dairy Farmer To Use His Grain "Same As Cash" To Reduce His Monthly Feed Bill And To Avoid Having To Take "Harvest Price" For His Grain

Prices Week Of 4/21/97  
Corn \$3.37 Bu.  
Soybeans \$8.28 Bu.  
Barley \$3.35 Bu.

- No Storage Charges
  - Prices Updated Weekly
  - Grain Bank Balance Shown On Each Invoice
  - No Hidden Charges
- For every ton of qualifying dairy feed purchased you will receive one ton of grain bank hauled at no charge

CUSTOMER SERVICE DEPT.  
OPEN 11 HOURS A DAY  
CALL 732-4367  
penfield feeds

**Lancaster Farming**

INDEX

Five Sections

<b>COLUMNS</b>		<b>DEPARTMENTS</b>	
Now is the Time.....	A10	Editorial .....	A10
Family Living Focus.....	B 4	Farm Calendar.....	A10
On Being A Farm Wife.....	B12	Futures .....	A16
All Garden's.....	B15	Mailbox Markets.....	B17
Ida's Notebook.....	B16	Sale Reports .....	B20
Livestock Ledger .....	C 2	Public Auction Register.....	B25
Poultry Pointers.....	D 6	Classified Ads .....	C14, D 6
		Business News .....	D 4
<b>FEATURES</b>		<b>HOME AND YOUTH</b>	
Int'l Trade Show .....	A19	Homestead Notes .....	B 2
Grange Week Preview .....	A24	Home On The Range .....	B 6
Grange Legislation.....	A25	Cook's Question Corner .....	B 8
Soybean Winner.....	A37	Kid's Korner .....	B10
Farm Mom Enters.....	B 2	You Ask, You Answer.....	B28
Cake Decorating.....	B13		
Nutrition Message.....	B14	<b>DAIRY</b>	
Ag Education .....	B14	Jersey News .....	A27
FFA Leadership .....	C 3	DHIA Focus.....	A29
<b>SPECIAL SECTION</b>		Fed. Order Consolidation.....	A38
Foraging Around		Top PA DHIA.....	C10

**HERE TODAY • HERE TO STAY**  
**For Buying or Selling Livestock**  
**Call Dunlaps at (717) 397-5136**

**Slaughter Cattle**  
Every Monday 9:30 AM

**Feeder Cattle**  
EVERY FRIDAY DURING APRIL

Receiving Market Hogs Wednesday 6:30 AM

Sheep & Goat Consignments Welcome for Mondays

**New Sheep & Goat Manager . . . Jim Hunsicker**  
717-397-5136 or 717-656-4264

**Graded Sow & Boar Sales**  
May 6 & 20  
(1st & 3rd Tues. of month)  
Receiving 6:00 AM to Noon  
SALE - 2:00 PM (INDIVIDUALS)  
2:30 PM - Large Lots (TELE-AUCTION)

Sows to be graded & weighed in 50 lb increments  
**PROBLEM SOWS SOLD SEPARATELY**

**Walter M. Dunlap and Sons**  
**LANCASTER STOCKYARDS**  
An Old Line Commission Firm Dedicated to Livestock Marketing for the 21st Century!