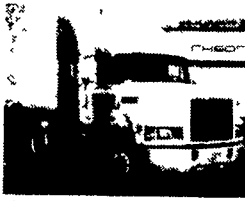


LESHER *Mack* SALES & SERVICE

27th & Cumberland St.
Route 422 West

Lebanon, Pa
17042



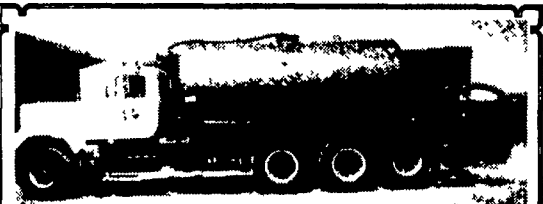
(6) 1993 Mack CH 613 E7-350 V-Mac, RTX 14709H, 12 Frt, 38 Rear, Air Ride, 4 11 Ratio, 192" WB, St-Disc Wheels, 42" Sleeper

(2) 1991 MACK CH613, Em 7-300, T2050 - 5-speed, Reyco Spring Suspension, 5.55 Ratio, 188" WB

717-273-4535

'92 Chevy 1500 Cheyenne, 1/2 ton, 4.3 V6, auto, PS, PB, AM-FM, 64,000 one owner miles, new radials, red, excellent condition, \$7,950. 717-733-2873

Mack 80 U 600, 237 5 speed, Mack tandem rears, good motor, trans & rears, cab is fair. Has power steering. No 5th wheel. \$4,000 OBO. (302)284-8774.



1985 Mack, E-9-450 Mack Engine, 12 sp. Mack trans. 58,000 lb. Mack rears. 18,000 lb. steering axle. Equipped with 4700 gal. pres./vac. tank, 8" load and unload valves, 350 CFM Walley Vac./press. pump powered with F3L-1011 Deutz, 4 shank Sunflower sub-soiler injector system.

\$48,500 w/chisels

Can buy without chisels

Lanc. Co., Pa.

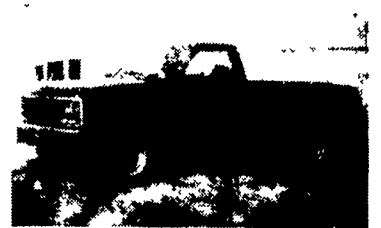
717-733-8528

USED TRUCKS



'94 Chevy Silverado 8600 GVW 4x4 6.5 turbo diesel 5 sp PS, PB, PW, PL, Cruise Tilt, AM/FM Cassette. 66,000 mi, teal & silver

\$18,400



'93 Chevy HD 3/4 Ton 4x4 8600 GVW 350 fuel injected 5 speed PS, PB, A/C, AM/FM 57,000 mi

\$15,700

MARTIN'S AUTO SALES

1025 W. Main St., New Holland, PA 17557

(717) 656-6621

R & R CAR AND TRUCK CENTER

1657 Rohrerstown Road, Lancaster, PA



1988 IHC S1954,
DT466, 5.2 spd, P/S, A/B, A/C, 30,000 GVW 143" CA, 18" C&C New Recent Eng O/H, Paint & Insp Very Clean **\$12,500**

1980 GMC GENERAL
T/A, D D 270 HP, 9 Spd, P/S, A/B, Reyco Susp., 4100 Gal Alum Tank 46,000 GVW, New Insp **CALL FOR DETAILS**



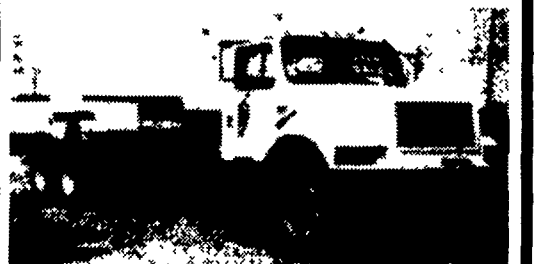
1984 FORD E-350
14' Reeler Hi Cube 351 V8 A/T P/S P/B Dual Wheel 9 800 GVW T/K Unit With 115V Sidby **\$5,200**

89 FORD LT 9000
NTC 300 13 Spd Engine Brake P/S A/C Hend Spring Susp 162" WB Very Clean New Paint & Insp **only \$13,900 Reduced To \$12,900**

Call Ray Leed 717-560-4901



1988 IH 1754 Under CDL 170 HP Turbo Diesel, Auto, P/S, New 12' Contractor Dump, New Paint, 171,000 Miles **\$16,900**



1990 IH F4900 52,000 GVW 126,000 Orig. Miles, 210 HP, 7 Speed, D. Frame, New Tires, Paint, Insp. **\$22,700**

K.T. Graham
Rt. 272, Akron, PA
717-859-3168



1994 Chev G20 Beauville, 8 pass, FI 350, ATO, Dual A/C & Heat, PW, PL, Tilt, Cruise, Privacy Glass, 45 K #12340



1996 Chev G30 Beauville, 12 pass, FI 350, ATO, A/C, PW, PL, Tilt, Cruise, 36K #12347



1994 Ford E150 XLT 8 pass, EFI 351, ATO, AC, PW, PL, Tilt, Cruise, Privacy Glass, 56K #23366



1996 Ford E350 XLT 15 pass, EFI 351, ATO, Dual AC & Heat, PW, PL, Tilt, Cruise, 15K, #2389



1995 Ford E250 Cargo w/Bins, EFI 351, ATO, AC, 46K #12375



1995 Ford E350, Dual Wheel, Hi Cube, 10,700 GVW, Power Stroke Diesel, Extra Clean, ATO, AC, 80K

717-354-3199 Fax 717-355-0625

**A LESSON
WELL
LEARNED...
LANCASTER
FARMING'S
CLASSIFIED
ADS
GET RESULTS!**

Huntingdon Equipment

Rentals
Available

GOOD
USED EQUIPMENT

Huntingdon Valley, PA • 215-672-9667 • 1-800-543-3833 • Eddie



Vermeer M-470 Trencher with backhoe
This is one of six units we have all ready to work Starting at \$4,500.



Flat Bed - Diesel 8 2 - 5 speed auto with 2 speed rear GVW - 26,000



1986 Chevy 5 Man Cab Dump, 3208 Cat - 5/2, Air Brakes Dump with Lift Gate Dump 14' Long, GVW 34,000 pounds.



Material Handler Bucket Truck - 42 Bucket with Jib 1981 and 1982 Diesel Engine - Auto or Stick - Spring Special \$9,995



Stake Body Boom Truck - 45' Height 14,000 lbs cap. 1985 GMC - Gas - 5 Speed - 2 Speed Rear



Roll Back - 1982 International with DT-466 Diesel - 5 Speed Auto. GVW 43,000 lbs - Former Utility Company Truck Only - \$13,877 26' Bed.

DIGGER DERRICKS/AERIAL BUCKETS/UTILITY EQUIPMENT

- 93 Chevy Lumina APV 7/Pass, White, V-6, AT, Loaded, Dual-AC, ABS, 57,224 Mi..... **\$10,500**
- 93 Chevy Beauville 12/Pass, White, 350, V-8, AT, Loaded, Dual-AC, 73,183 Mi... **\$12,900**
- 92 Ford Mark III Hi-Top Conv. Van, 7/Pass, Black, V-8, AT, AM-FM Cass, AC, PW, PL, CC, Dual-AC, Airbag, 70,100 Mi... **\$14,600**
- 92 Toyota Camry SE, 4dr, Maroon, V-6, 5sp, Loaded, PWR-Sunroof, Airbag, CD-Tape, 57,796 Mi..... **\$10,900**
- 92 Pontiac Bonneville SSEI, 4dr, Supercharged, White, V-6, AT, PWR-Sunroof, Gray-Leather, Trac-Control, Airbags, Hud, 79,687 Mi..... **\$10,900**
- 91 Jeep Cherokee Limited, 4dr, 4x4, H.O., Dk Maroon, 4.0, 5cl, AT, Loaded, Dual-Pwr-Seats, Tan Leather Int, 67,416 Mi. **\$12,800**
- 89 Isuzu Trooper 4x4, Blue, V-6, 5sp, AM-FM-Cass, AC, 77,443 Mi **\$6,900**
- 89 Jeep Wrangler Islander Softtop, 4x4, Yellow, 4cyl, 5sp, 85,896 Mi..... **\$6,600**
- 88 Chevy 2500 Ext Cab, 4x4, P.U., Blue, 305, V-8, AT, AM-FM ST, AC, 139,109 Mi... .. **\$7,900**
- 87 Chevy Suburban 2500, 4x4, Sierra Classic Black, 350, V-8, AT, Loaded, 9/Pass, 98,659 Mi..... **\$9,500**
- 86 Chevy 10 Silverado, 4x4, Brown, 305, V-8, 4sp, Loaded, Dual-Tanks, 49,893 Mi..... **\$6,600**

Brubaker's Auto Sales
Myerstown, PA
717-866-5237