

Central U.S.

Carlot

Beef Report
April 16, 1997

Report supplied by USDA

USDA NATIONAL CARLOT BEEF REPORT (INCLUDES MAJOR PRODUCTION AREAS IN THE MIDWEST AND TX) AS OF 3 P.M.

COW AND BULLS CARCASS FOB OMAHA

3.0 LOADS REPORTED

COMPARED TO APRIL 15 REPORT: UTILITY COW CARCASSES 1.00 HIGHER; CUTTER NOT TESTED. DEMAND MODERATE ON LIGHT OFFERINGS.

UT, BRK 2-4 450 LBS. AND UP, 1.0 LOADS, RANGE 68.00, LATEST ESTB. MKT. 68.00.

UT, BNG 1-3 400 LBS. AND UP, 2.0 LOADS, RANGE 72.00, LATEST ESTB. MKT. 72.00.

CUTTER 1-2 350 LB. AND UP, UNQUOTED. BULLS YG1 500 LBS. AND UP, UNQUOTED.

COW AND BULL CARCASSES CAF WEST COAST

MARKET FOR WEEK ENDED APRIL 11.

UT, BNG 1-3 400 LBS. AND UP, RANGE 70.00.

CUTTER 1-2 350 LBS. AND UP, RANGE 70.00.

BONELESS PROCESSING BEEF/BEEF TRIMMINGS

149.0 LOADS REPORTED

FRESH PROCESSING BEEF MOSTLY STEADY. DEMAND LIGHT FOR LIGHT TO MODERATE OFFERINGS. BEEF TRIMMINGS HIGHER ON FAIRLY GOOD DEMAND AND MODERATE OFFERINGS.

FOB OMAHA BASIS

90% FR, 13 LOADS, RANGE 103.0-104.5 WT. AVG. 103.81.

90% FZ, RANGE 105.0, WT. AVG. 105.29 C.

85% FR, 10 LOADS, RANGE 97.0, WT. AVG. 97.00.

85% FZ, UNQUOTED.

75% FR, 4 LOADS, RANGE 81 0-82.0, WT. AVG. 81.75.

75% FZ, UNQUOTED.

65% FR, 2 LOADS, RANGE 67.00, WT. AVG. 67.00.

65% FZ, UNQUOTED.

50% FR, 100 LOADS, RANGE 49.00-52.00, WT. AVG. 50.60.

50% FZ, 50% BX, AND BULL 92-94, UNQUOTED.

FOB EAST TX & OK

90% FR, 2 LOADS, RANGE 104 0, WT. AVG. 104.00.

90% FZ, UNQUOTED.

85% FR, UNQUOTED.

85% FZ, 75% FR, 75% FZ, 65% FR, AND 65% FZ, UNQUOTED.

CAF NE AREAS

90% FR, 18 LOADS, RANGE 105 0-107.0, WT. AVG. 106.17.

90% FZ, UNQUOTED.

85% FR, WT. AVG. 99 0, WT. AVG. 99.00 E.

85% FR, UNQUOTED.

85% FR, 75% FR, 75% FZ, 75% FR, UNQUOTED.

65% FR AND 65% FZ, UNQUOTED.

CAF WEST COAST BASIS

WEEK ENDED 4/11/97

90% FR, UNQUOTED.

90% FZ, UNQUOTED.

85% FR, RANGE 93.0, WT. AVG. 93.00.

85% FZ, UNQUOTED.

75% FR, UNQUOTED.

75% FZ, UNQUOTED.

65% FR, RANGE 63.0-66.0, WT. AVG. 64.45.

65% FZ, UNQUOTED.

50% FR, RANGE 43.00-48.5, WT. AVG. 45.61.

50% FZ, UNQUOTED.

\*\*ABCDE AFTER QUOTES REPRESENTS DAYS SINCE LAST ACTUAL MARKET TEST. QUOTES ARE DROPPED AFTER 5 DAYS OF NO TEST OR BEFORE IF THEY NO LONGER REFLECT CURRENT MARKET CONDITIONS.\*\*

SOURCE: USDA MARKET, DES MOINES, IA.

Jersey Shore Livestock Market, Inc.

Auction every Thursday

at 4:00 p.m.

Jersey Shore, Pa.

Report supplied by Auction

Thursday, April 17, 1997

RETURN TO FARM CALF

60.00-105.00.

GOOD VEAL: 40.00-60.00.

COMMON VEAL: 8.00-39.00.

CHOICE STEERS: 66.00-69.50.

SELECT STEERS: 63.00-65.00.

COMMON STEERS: 44.00-62.00.

COMMERCIAL COWS: 36.00-46.00.

CANNERS-CUTTERS: 30.00-35.00.

SHELLS: 24.00-29.00.

CHOICE HEIFERS: 64.00-69.00.

SELECT HEIFERS: 60.00-63.00.

COMMON HEIFERS: 42.00-59.00.

GOOD FEEDERS: 55.00-70.00.

COMMON FEEDERS: 40.00-54.00.

BULLS: 38.00-44.00.

GOOD HOGS: 48.00-52.00.

HEAVY HOGS: 45.00-49.00.

SOWS: 40.00-43.50.

Pennsylvania Livestock

WAYNESBURG, PA
APRIL 17, 1997

CATTLE:

SLAUGHTER COWS: Utility & Commercial 36.00-44.25; Cutter & Boning Utility 30.00-39.50; Canner & Low Cutter 28 00-34.50; Shells 28.00 & down.

BULLS: Yield Grade 1 1500/2000 lbs, 42.00-50.50; Yield Grade 2 1000/1400 lbs, 35.00-46.00.

FEEDER STEERS: M&L 1 300/500 lbs, 50.00-83.50; 350/380 lbs, 48.00-80.00; M 600/900 lbs, 45.00-71.50; HEIFERS: M 1&L 300/500 lbs, 35.00-73.50; L 1 400/650 lbs, 38.00-70.00; BULLS: M&L 1 300/620 lbs, 42.00-80.00. CALVES: Veal: Prime 40.00-85.00; Choice 38.00-62.50; Good 35.00-48.00; Farm Calves: #1 Holstein Bulls 90/120 lbs, few 35.00-65.00; #2 Holstein Bulls 80/100 lbs, 20.00-40.00; Beef X Bulls & Hfrs/Hd 20.00-100.00.

HOGS: Barrows & Gilts: #1-2 210/255 lbs, 45.00-51.50; #2-3 255/280 lbs, 45.00-47.50; Sows: #1-2 300/500 lbs, 30.00-48.00; Feeder Pigs: 1-3 15/20 lbs, 5.00-17.00/Hd; 1-3 25/35 lbs, 10.00-45.00/Hd.

LAMBS: High Choice 80/100 lbs, 90.00-128.00; Choice 70/90 lbs, 80.00-172.00; Feeder Lambs: Good 75.00-105.00; Sheep 20.00-58.00; Fat Sheep 40.00 and down.

GOATS: Large 60.00-80.00/Hd; Medium 30.00-55.00/Hd; Small 10.00-40.00/Hd.

HORSES: Horses 35.00-64.00; Ponies 20.00-44.50.

Indiana Farmers

HOMER CITY, PA
APRIL 17, 1997

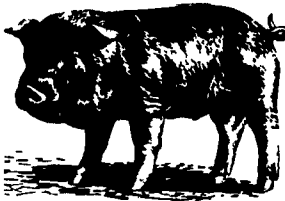
CATTLE: 215: Steers & Heifers: Steady to 3.50 lower; Cows: Steady to 1.00 lower. STEERS: Choice 1200/1490 lbs, 62.75-65.75; Select 55.00-62.00; Standard 43.25-55.75; Holsteins: Select few 49.00-52.75; Standard 39.75-48.25.

HEIFERS: Choice 995/1375 lbs, 61.75-65.00; Select 55.50-61.00; Standard 42.00-54.75.

COWS: Breaking Utility and Commercial 37.00-43.50, few to 44.50; Cutter and Boning Utility 32.00-36.50; Canner & Low Cutter 24.75-30.00; Shells down to 19.00.

BULLS: Few Yield Grade 1695/2330 lbs, 43.00-48.75.

FEEDER CATTLE: Few STEERS:



DID YOU KNOW...

A 24' x 80' silo is leaning 4' to 5' toward a house?

★ STAR SILOS ★

630 E. Lincoln Ave., Myerstown, PA 17067
717-866-5708 or 1-800-431-7709

GOOD'S AG SERVICE

Liquid Fertilizer 9-18-9
100% Ortho 5-15-15
3-18-18

Poly & Ortho Liquid Fertilizer

6-24-6 11-37-0
10-34-0 7-21-6

- CFS Waxy Corn Seed
CFS Soybeans Seed
CFS Alfalfa Seed
Nutri-Cal Liquid Calcium
Liquid Calcium
30% Liquid Nitrogen
Ammonium Thiosulfate Liquid 12-0-0-26s
Agri-SC Soil Conditioner
Boron 10% Liquid
Bivert
Maxi-Crop Liquid
Compostore Pit Additive
Kelp Meal
Agrox Seed Box Treatment
Custom Corn Planting
Custom Liquid Fertilizing
Soil Sampling/Nutrient Recommendations

For More Information Call
DALE GOOD 717-949-2371
Ask About EARLY DISCOUNTS

JAMES & CLARK, LLP
Attorneys-At-Law

Mark L. James James R. Clark

Estate Planning for Farm Families

- Wills, trusts and tax planning
Charitable giving

Business Planning for Farm Families

- Farm partnerships and corporations
Succession Planning/Farm Transfers

Real Estate

- Tax-free exchanges of real estate
Real estate settlements
Tax planning for sale of conservation easement

Estate Settlements

- Prompt settlement (most completed in 3 months)
Tax planning during settlement

54 Queen Road, P.O. Box 497
Intercourse, PA 17534
(717)768-7100
Office also in:
New Holland
(717)354-6083

Maryland Fruit Crop Damaged

WESTMINSTER, Maryland—The record cold temperatures we experienced last week have prompted numerous questions from consumers, news media and agricultural department personnel, concerning the effects on Maryland's fruit crop. The National Weather Service predicted that a Canadian air mass was headed our way trailing the earlier "Nor-Easter Storm" which brought snow to the New England States. This air mass arrived mid-week as predicted. Unlike typical spring frosts in our area, this air came in with high winds which lasted during most of the cold front. The ground and air were very dry for this time of year. Because the humidity was very low, the dew point was also quite low. These conditions (dry cold air) are more like the type of weather we experience in January and February.

On Wednesday morning (April 9), low temperatures dipped to 24-28°F from Central Maryland (Westminster) west. This was followed by a second blow Wednesday night and Thursday morning with temperatures ranging from 18-22°F. Areas east of Westminster were warmer and escaped the extreme temperatures with lows around 30 degrees.

We know from years of research and experience that about 10 percent of open blooms are killed at 28 degrees. More blooms are killed with every degree the temperature drops below 28. Because our mild temperatures in March encouraged fruit bud development, cherries, peaches, and apples were running approximately 7-10 days ahead of schedule. As a result cherries were in full bloom

(Turn to Page A25)

FARM FLY PROGRAM

REDUCE
Animal Suffering
Disease Transmission
Milk Contamination

IMPROVE
Overall Barn and Pipeline Cleanliness
Milking Conditions

WE PROVIDE

- Customized Treating Equipment
Specialized Training
Money Back Guarantee
Convenience
Insurance
Free Extra Services
No Risk Investment

THE TERMINIX COMMITMENT

At Terminix, we value you as a customer. We will provide your farm with the highest quality products and service at a fair price Guaranteed. Call now for a FREE Estimate.

TERMINIX® Lancaster
717-291-1241

Calf-tel

100,000 STRONG

To celebrate this achievement, Lance Hampel, Hampel Corp President is pleased to announce... The mold is paid for! SPECIAL PRICE

\$249-239-229-219-209-199...

SATISFIED CUSTOMERS OWN 1 TO 700

Volume Discounts Apply
Leasing Available

Calf-tel

For more information, the location of your local dealer or to place an order please call Brian at: 1-800-558-8558

