

Greencastle Livestock Market

April 3 and 7
Hay & Straw
Report Supplied by Auction
35 LOADS.
ALFALFA: 110.00-236.00.
TIMOTHY HAY: 66.00-115.00.
MIXED HAY: 62.00-158.00.
BROME GRASS: 87.50.

Belleville Hay

Wednesday, April 9
Belleville, PA
Report Supplied by Auction
ALFALFA HAY: 15 LOTS, 102.50-155.00.
MIXED HAY: 46 LOTS, 62.50-160.00.
STRAW: 4 LOTS, 67.50-97.50.
EAR CORN: 4 LOTS, 75.00-80.00.
OATS: 2.40-3.20 BU.

Middleburg Hay

Middleburg, PA
Tues., April 8, 1997
Report supplied by PDA
97 LOADS TOTAL, 56 LOADS OF HAY.
ALFALFA: 13 LOTS, 85.00-155.00.
MIXED HAY: 34 LOTS, 80.00-165.00.
TIMOTHY: 8 LOTS, 90.00-120.00.
ORCHARD GRASS: 62.50.
STRAW: 7 LOTS, 75.00-95.00.
EAR CORN: 16 LOTS, 70.00-90.00.
OATS: 17 LOTS, 2.20-5.80 BU.

Leesport Livestock

LEESPORT, PA
APRIL 9, 1997
CATTLE 336... PDA ... Supply included 134 slaughter steers and heifers and 64 feeder cattle ... Compared with last Wednesday's sale... all steers steady to 1.00 lower, cows .25 to 1.00 higher.
STEERS: Choice 1125/1400 lbs. 62.50-64.75, one 66.75, Select 57.00-62.00, few Standard 52.75-57.25.
HOLSTEINS: High Choice and Prime 1240/1655 lbs. 61.00-64.00, Choice 1240/1700 lbs. 56.00-61.75, Select 51.75-56.75, Standard 43.00-48.50.
HEIFERS: few Choice 1005/1215 lbs. 62.00-68.75, Select 57.00-62.50, few to 55.00, Standard 47.00-53.00.
COWS: Breaking Utility and Commercial 39.50-44.25, high dressing 47.25, Cutter and Boning Utility 35.00-38.75, Canner and Low Cutter 31.75-35.75. Shells down to 26.00.
BULLOCKS: couple Select 48.00 & 53.75.
BULLS: Yield Grade No. 1 1075/1875 lbs. 45.50-47.25, one 49.50, few No. 2 900/1700 lbs. 42.00-45.00.
FEEDER CATTLE: STEERS: Medium & Large Frame No. 1 440/660 lbs. 66.00-69.00, one lot 10 head 75.00, Large Frame No. 2 465/825 lbs. 50.00-60.00; HEIFERS: few Medium Frame No. 1 400/550 lbs. 65.00-65.50, few Large Frame No. 2 425/500 lbs. 45.00-58.00; BULLS: Large Frame No. 2 435/665 lbs. 62.00-64.00.

CALVES 157... VEALERS: one Choice 97.50, Standard and Good 75/115 lbs. 20.00-36.00, Utility 60/70 lbs. 14.00-21.00.
SLAUGHTER CALVES: Choice 450/670 lbs. 55.00-71.00.
FARM CALVES: Holstein bulls 10.00 to 30.00 higher, heifers steady to 7.00 higher... No. 1 Holstein bulls 90/125 lbs. 87.50-102.50, 80/90 lbs. 72.00-90.00, No. 2 80/120 lbs. 40.00-75.00, No. 1 Holstein heifers 95/125 lbs. 120.00-155.00, one 100.00, No. 2 80/100 lbs. 37.50-52.50. Beef cross bulls and heifers 80/125 lbs. 75.00-100.00.
HOGS 88... Barrows and gilts steady to 2.00 higher, sows steady to 1.00 higher.
BARROWS AND GILTS: US 1-2 225/260 lbs. 50.00-52.25, US 1-3 230/285 lbs. 48.00-49.25, US 2-3 240/280 lbs. 40.00-46.00, few US 1-3 200/205 lbs. 41.00-45.00.
SOWS: US 1-3 370/450 lbs. 38.00-42.00, 515/755 lbs. 41.00-46.50, few Medium 325/650 lbs. 25.00-35.00.
BOARS: few 260/370 lbs. 35.00-36.00.
FEEDER PIGS 99... US 1-3 20/25 lbs. 145.00, 40/70 lbs. 85.00-90.00, lot 127.50, few US 2-3 35/70 lbs. 70.00-87.50. --- per cwt.
SHEEP 65... SLAUGHTER LAMBS: Choice 35/55 lbs. 130.00-180.00, one lot 200.00, few 80/130 lbs. 122.50-142.50, Good and Choice 30/45 lbs. 95.50-137.50.
OLD CROP LAMBS: Choice 65/135 lbs. 102.50-122.50.
SLAUGHTER SHEEP: 32.50-57.50, Yearlings to 77.50.
GOATS 19... Few Large 80.00-137.50, few Medium 37.50-70.00, Large Kids 40.00-50.00, Small Kids 35.00-37.50. --- per head.

New Holland Sales Stables Goat and Sheep Sale

Monday, April 7, 1997

	Calves	Sheep	Goats
Today	164	650	549
Last Week	99	299	6741

CALVES: VEALERS STEADY, ALTHOUGH WEIGHTS OVER 120 LBS. NOT TESTED; SLAUGHTER CALVES 10.00-15.00 HIGHER. DEMAND FAIR FOR HOLSTEIN BULLS AND HEIFERS TO RETURN TO FARM.
VEALERS: HIGH GOOD AND LOW CHOICE 80-120 LBS. 18.00-32.00.
SLAUGHTER CALVES: CHOICE 300-400 LBS. 70.00-80.00; GOOD 250-500 LBS. 50.00-65.00.
RETURNED TO FARM: BULK 90-120 LB. HOLSTEIN BULLS 55.00-66.00; SMALL FRAME 85-110 LBS. 35.00-45.00. SMALL SUPPLY 85-115 LB. HOLSTEIN HEIFERS 110.00-140.00.
SHEEP: SLAUGHTER LAMBS AND SLAUGHTER EWES FULLY STEADY. SUPPLY INCLUDED 50 PERCENT SLAUGHTER LAMBS WITH THE BALANCE SLAUGHTER EWES.
SLAUGHTER LAMBS: CHOICE 1-2 60-80 LBS. 120.00-135.00, 85-120 LBS. 110.00-125.00, 120-150 LBS. 90.00-100.00.
NEW CROP LAMBS: CHOICE 1-2 35-50 LBS. 140.00-175.00, 50-80 LBS. 135.00-150.00, 80-110 LBS. 120.00-135.00.
YEARLINGS: CHOICE 80-120 LBS. 70.00-100.00.

SLAUGHTER EWES: CHOICE 1-2 60.00-80.00; UTILITY AND GOOD 1-3 40.00-60.00; FEW BUCKS UP TO 70.00.
GOATS: ALL GOATS SOLD BY THE HEAD. BILLIES LARGE 100.00-150.00, FEW 150.00-185.00; MEDIUM LARGE 75.00-100.00; MUTTON LARGE 85.00-110.00; NANNIES MEDIUM AND LARGE 60.00-90.00; KIDS CHOICE 40.00-60.00; GOOD 20.00-40.00.

New Holland Dairy

New Holland Sales Stables
Wednesday, April 9, 1997

Report supplied by auction
108 DAIRY COWS; 45 HEIFERS; 10 BULLS. MARKET STADY.
LOCAL FRESH 735.00-925.00.
FRESH HEIFERS 650.00-925.00.
LOCAL SPRINGERS 777.00-1135.00.
UPSTATE LOADS FRESH 1000.00-1350.00.
HERDS ALL STAGES 520.00-1110.00.
SPRINGING HEIFERS LARGE 985.00-1210.00, SMALL 650.00-800.00.
SHORTBRED HEIFERS 650.00-1035.00.
REGISTERED HEIFERS OPEN 500.00-985.00.
OPEN BREEDING AGE HEIFERS 610.00-685.00.
SMALL OPEN HEIFERS 250.00-585.00.
BULLS 200.00-325.00, PUREBREDS 510.00-775.00.

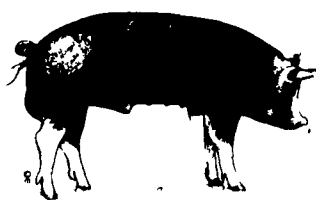
EFFECTIVE MONDAY, APRIL 7, 1997

To Better Serve You During The Busy Planting Season
EXTENDED PARTS DEPT. HOURS
APRIL - MAY - JUNE

MON. ★ TUES. ★ THURS. ★ FRI.
7:00 AM - 8:00 PM SAT. 7:00 AM - 3:00 PM

BINKLEY-HURST BROS. INC.

133 Rothsville Station Rd.
P.O. Box 0395
Lititz, PA 17543-0395
(717) 626-4705
1-800-414-4705



LATE CONSIGNMENT NEW HOLLAND SALES STABLES

For **HORSE SALE**

SATURDAY, APRIL 19

2 STANDARD BRED TROTTERS

1 Solid Black, 1 Bay Standing 16-2

Consigned by: Levi S. Stoltzfus

See Additional Consignments Page E34 of this Issue



SPECIAL LAMB, GOAT & SHEEP SALE

for the

ETHNIC HOLIDAY

Mon. April 14 10:00 A.M.

LAMB and KID GOAT SALE
for GREEK EASTER

Mon., April 21 10:00 A.M.

At The

New Holland Sales Stables Inc.
12 Miles East of Lancaster on Rt. 23,
New Holland, PA

Ken Smoker, Sheep & Goat Manager
Norman & David Kolb 61L

Ph: 717-354-4341 FAX # 717-355-0706



Diffenbach Auction Inc.

100 West Jackson Street • New Holland, Pennsylvania 17557
Office: (717) 355-7253 • FAX: (717) 355-9547

HAY & GRAIN SALE EVERY MONDAY - 10:00 A.M.

WED	MAY 7	WINROSS TRUCKS & TOYS	6 30 PM
FRI	MAY 9	FARM EQUIP, TRACTORS & FARM SUPPLIES	9 00 AM
TUES	MAY 20	QUILT, CRAFT & BUGGIES	9 00 AM
WED	MAY 21	QUILT & CRAFT	9 00 AM

EQUIPPED FOR AN AUCTION AT YOUR PLACE OR OURS
ALAN DIFFENBACH AUCT.-AU2258-L

LEBANON VALLEY ENTERPRISES, INC.
Manufacturing • Powder Coating • Precast

Headlock with Downed Cow Auto Release!



Finished with TGIC Polyester Powder Coating
• 20 year Rust thru Guarantee
• Heavy-duty Construction
• Adjustable Neck Opening
• Individual Locking Capability

Call us for your nearest Dealer

P.O. Box 187, Myerstown, PA 17067 • (717) 866-2030

NEW HOLLAND SALES STABLES INC. THE ACTION AUCTION

Livestock Is Our Only Business

MONDAY

SLAUGHTER HOGS
EARLY BIRD HOG SALE
7:30 A.M.

Sell Your Hogs At New Holland Sales Stables, Inc
See them weighed, sold and pickup your check

10:00 A.M.

HORSES
MULES

10:00 A.M.

SHEEP, GOATS & CALVES

1:30 P.M.
BEEF SALE

THURSDAY

Beef Auction 10:00 A.M.

BULLS, STEERS,
BEEF COWS

1:00 P.M.

STOCKERS & FEEDERS

10:30 A.M.

GOATS, SHEEP
CALVES

WEDNESDAY

HEIFER SALE 11:00 A.M.
COW SALE 12:00 NOON

HEIFERS
BULLS



DAIRY
COWS

We have the usual run of 50 to 100 Heifers, all ages
Loads of fresh cows and springers from our regular
shippers. Also some local fresh cows and springers

1:30 P.M.
FEEDER PIG SALE



Pigs are accepted after 6:30 A.M. State graded from 8 to 12 Dairy
Barn and Feeder Pig Barn are cleaned and disinfected weekly for
your protection

NEW HOLLAND SALES STABLES, INC.
12 Miles East of Lancaster Off Route 23, New Holland, Penna.

MANAGERS

Norman & David Kolb- 717-397-5538

Sale Barn Office Manager:

Roger Floyd- 717-354-4341

FAX #717-355-0706

Order Buyer:

Paul Good - 215-445-8662

Field Representatives For Beef and Feeders:

Luke Eberly - 215-267-8608 738-1685

Homer Eberly- 215-267-3047

Nevin Martin 717-354-7186

Ron Ranck - 717-856-9849

Field Representatives For Goats, Sheep & Calves:

Ken Smoker - 610-593-2123