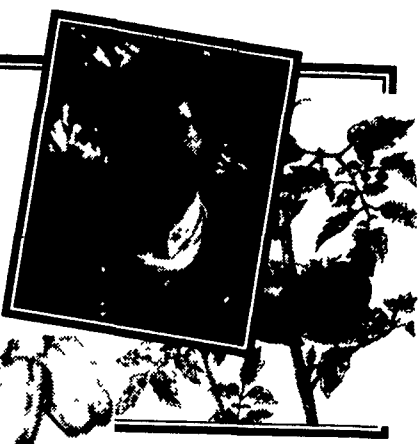


**All Gardens  
Great & Small**  
by  
York Co.  
Horticultural Agent  
**Tom Becker**



#### Blue And Purple Perennials Add Color

The best selection of perennials occur in the early spring. If you want a specific color, choose a named cultivar at a local nursery or garden center.

Perennials with blue, purple, and black flowers are growing in popularity. Examples include Bergenia, Lungwort, hellebores and Jacob's ladders. There are early Spring shade-loving perennials. In addition, hostas have violet and lilac flowers that bloom well into the summer.

For moist soils, choose blue and purple flowering perennials like Japanese Iris, Siberian iris, Great blue lobelia, Virginia bluebells, bee balm, Japanese primrose, or spiderwort. For dry soils, select perennials like baptisias, globe thistle, tall gay feather, statice, blue flax, blue sage, or lamb's ear.

Perennials with strikingly blue, grey or dark purple foliage,

include Ajuga, artemisia or huechera.

One perennial with strikingly unique color is Salvia "May Night". It has dark blue-black flower spikes. Salvia "Mainacht" is so good, it was selected as the 1997 Perennial Plant of the Year by the Perennial Plant Association. It has a long season beauty, and is adaptable to most landscape soils.

Salvia "May Night" is a late-spring blooming perennial. Its dark blue-black flower spikes work well as a specimen plant or in perennial borders or mass plantings. Plant Salvia in a sunny spot that has soil that is not too dry or wet. Once established, this salvia withstands even severe summer droughts.

Salvias are members of the large mint family. As a result, the fragrant foliage is minty to the touch. Its flowers are attractive to bees and other garden-flower pollinators.

## Save Money With A Phone Call

RUTGERS, N.J. — Many people complain that they have no time to do comparative shopping for services and products. In some cases, money saving opportunities are just a phone call away. Here are four ways to cut costs and let your fingers do the walking.

Cut your long-distance bills without getting caught up in the long-distance wars. You can frequently save money without even switching carriers. Chances are your current long distance company has a wide choice of calling plans. Let them figure out which plan is best for you. Your current

Salvias do best in rich soils. A spring application of an organic fertilizer or 10-10-10 or 10-6-4 at the rate of 1-2 lbs per thousand square feet is adequate.

Salvia "May Night" is especially good in combination with Achilla "Coronation Gold" or with pink or red herbaceous peonies. When mature, the plants are 2 to 2 1/2' tall and 1-2 feet across. Bloom time extends from May to July.

Salvia "May Night" also looks great with other blue-flowering perennials, such as ladybells, carpathian bell flower, balloon flower, catmint and speedwell. It also looks great among yellow-flowering daylilies, coreopsis and all types of yarrow.

carrier will bend over backwards to keep you as a customer. Have them analyze your calling patterns and tell you which of their plans will save you the most money. Also inquire about any special reward programs that you might be eligible for.

Find the best deal of life insurance. Life insurance can take a big bite out of a family's budget. Comparison shopping of policies can be a hassle. However, you can let someone else do the homework by making several phone calls. Insurance Quote (800-972-1104 - free) and Select Quote (800-343-1985 - free) will compare dozens of companies for which they serve as agent to get you the best price on a policy. Insurance Information (800-472-5800 - Cost \$50) will research several hundred companies and is an agent for none.

Save big \$ when you buy a car. Using a car buying service levels the playing field by putting an experienced negotiator on your side. A car buying service can do all the research to find the best price for the car that you want and then ne-

gotiate with the new car salesman for you. This is not a free service, but most fees are under \$100. More than likely, you'll save a lot more than that from savings on the price of a car. Available car buying services include:

- American Car Buying Service (800-223-4882; \$75 retainer fee)
- Autovantage (800-999-4CAR; 3-month trial membership \$1; Regular membership \$49)
- Consumer's Car Club (800-CAR-CLUB; \$69 membership)

Locate the best mortgage for your home. You can get the best deal on your next mortgage (or refinance) by having HSH Associates do the research for you. Simply call 1-800-UPDATES. The \$20 cost includes a 54-page booklet on shopping for a mortgage and gives you a computerized list of names and telephone numbers of lenders in your area with current mortgage interest rates, points and terms.

Saving money does not have to involve a lot of work. Just pick up the phone and let someone else do the work for you.

# got milk?

**Ham, Oyster &  
Oyster Pie Supper**  
Saturday, April 26

4:00-7:00 PM

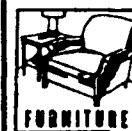
\$8.00 - Take Out Avail.

**Christ Lutheran Church**

Stouchsburg, PA

Along Rt. 422 between Myerstown and  
Womelsdorf

**610-589-2202**



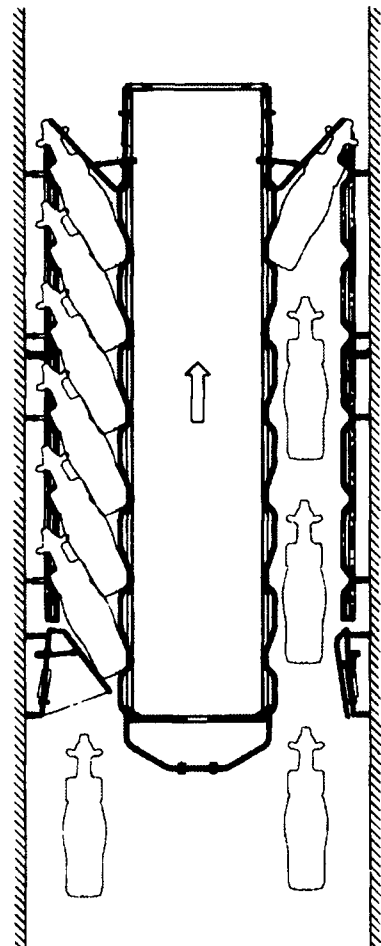
CLOSED SUNDAYS, NEW YEAR,  
EASTER MONDAY, ASCENSION DAY,  
WHIT MONDAY, OCT. 11, THANKSGIVING,  
CHRISTMAS & DECEMBER 26TH

**FISHER'S FURNITURE, INC.**

NEW AND USED FURNITURE  
USED COAL & WOOD HEATERS  
COUNTRY FURNITURE & ANTIQUES

BUS. HRS. BOX 57  
MON.-THURS. 8-5 1129 GEORGETOWN RD.  
FRI, 8-8, SAT. 8-12 BART, PA 17503

# If you think you can't afford to build a parlor, you probably can't afford not to build a parlor



The bottom line in milking is making the most with what you've got. And if you thought that making the most of your current dairy operation would cost you an arm and a leg, then you need to find out more about

an Alfa Laval Agri parlor. Talk to your local independent Alfa Laval Agri dealer about how you can milk more cows per hour, save the labor of one complete person and upgrade your existing stanchion barn

to an Alfa Laval Agri parlor, for a price you can live with, and feel good about.

Why settle for less, when you can have more with a parlor from Alfa Laval Agri.

## Alfa Laval Agri™

J.B. Zimmerman  
& Sons, Inc.  
P.O. Box 337  
Lancaster County  
Blue Ball, PA 17506  
717-354-8030

Erb and Henry  
Equipment, Inc.  
22-26 Henry Avenue  
New Berlinville, PA 19545  
610-367-2169

Franklin Hess  
Ent., Inc.  
Rt. 2, Box 130  
Orangeville, PA 17859  
717-925-6939

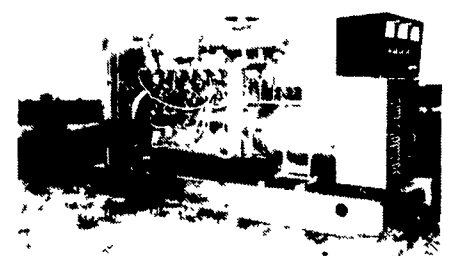
Witmer Implement  
Service  
1896 Bedford Rd.  
Shippensburg, PA 17257  
717-532-6139

Potamic Valley  
Supply  
11606 Greencastle Pike  
Hagerstown, MD 21740  
301-223-6877

People Sales  
and Service  
Oakland Mills, PA 17076  
717-463-2735  
717-436-2735

H.B. Duvall, Inc.  
901 E. Patrick St.  
Frederick, MD 21701  
301-662-1125  
Out of State: 800-423-4032

# MARTIN MACHINERY



### GENERATORS

**Sales ★ Service ★ Rentals**  
★ Complete Generator Systems  
★ PTO ★ Portables ★ 2-1600 KW  
"We Service It If You Have It  
And Sell It If You Need It"

34 W. Mohler Church Rd.  
Ephrata, PA 17522

Tel: 717-738-0300  
Fax: 717-738-4329