

Central U.S. Carlot

Beef Report
 April 9, 1997
 Report supplied by USDA
 USDA NATIONAL CARLOT BEEF REPORT (INCLUDES MAJOR PRODUCTION AREAS IN THE MIDWEST AND TX) AS OF 3 P.M.
COW AND BULLS CARCASS FOB OMAHA
3.0 LOADS REPORTED
 COMPARED TO APRIL 8 REPORT: UTILITY CARCASSES STEADY; CUTTER NOT ESTABLISHED. DEMAND AND OFFERINGS MODERATE.
 UT, BRK 2-4 450 LBS. AND UP, 1.0 LOADS, RANGE 67.00, LATEST ESTB. MKT. 67.00.
 UT, BNG 1-3 400 LBS. AND UP, 2.0 LOADS, RANGE 71.00, LATEST ESTB. MKT. 71.00 C.
 CUTTER 1-2 350 LB. AND UP, LATEST ESTB. MKT. 68.00 C.
 BULLS YGI 500 LBS. AND UP, UNQUOTED.
COW AND BULL CARCASSES CAF WEST COAST MARKET FOR WEEK ENDED APRIL 4.
 UT, BNG 1-3 400 LBS. AND UP, RANGE 69.00.
 CUTTER 1-2 350 LBS. AND UP, RANGE 69.00.

BONELESS PROCESSING BEEF/ BEEF TRIMMINGS
187.0 LOADS REPORTED
LEAN BONELESS BEEF GENERAL- LY WEAK; 85% AND 75% GENERALLY STEADY; 65% 1.00 LOWER. DEMAND LIGHT TO MODERATE FOR MODERATE OFFERINGS. BEEF TRIMMINGS GENERALLY STEADY ON MODERATE DEMAND AND OFFERINGS.
FOB OMAHA BASIS
 90% FR, 14 LOADS, RANGE 100.0-102.0 WT. AVG. 101.07.
 90% FZ, RANGE 105.0, WT. AVG. 105.00 C.
 85% FR, 16 LOADS, RANGE 93.0, WT. AVG. 93.00.
 85% FZ, UNQUOTED.
 75% FR, 5 LOADS, RANGE 80.0-81.5, WT. AVG. 80.60.
 75% FZ, UNQUOTED.
 65% FR, 16 LOADS, RANGE 63.00-64.00, WT. AVG. 63.25.
 65% FZ, UNQUOTED.
 50% FR, 91 LOADS, RANGE 44.50-45.00, WT. AVG. 44.71.
 50% FZ, 50% BX, AND BULL 92-94, UNQUOTED.
FOB EAST TX & OK
 90% FR, 15 LOADS, RANGE 101.5-102.5, WT. AVG. 102.00.
 90% FZ, UNQUOTED.
 85% FR, UNQUOTED.
 85% FZ, 75% FR, 75% FZ, 65% FR,

AND 65% FZ, UNQUOTED.
CAF NE AREAS
 90% FR, 28 LOADS, RANGE 103.0-104.0, WT. AVG. 103.66.
 90% FZ, UNQUOTED.
 85% FR, 2 LOADS, WT. AVG. 99.0, WT. AVG. 99.00.
 85% FR, UNQUOTED.
 85% FZ, 75% FR, 75% FZ, 75% FR, UNQUOTED.
 65% FR AND 65% FZ, UNQUOTED.
CAF WEST COAST BASIS WEEK ENDED 4/04/97
 90% FR, UNQUOTED.
 90% FZ, UNQUOTED.
 85% FR, RANGE 93.0-93.5, WT. AVG. 93.30.
 85% FZ, UNQUOTED.
 75% FR, UNQUOTED.
 75% FZ, UNQUOTED.
 65% FR, RANGE 64.0-67.5, WT. AVG. 64.78.
 65% FZ, UNQUOTED.
 50% FR, RANGE 44.75-46.0, WT. AVG. 45.15.
 50% FZ, UNQUOTED.
****ABCDE AFTER QUOTES REPRESENTS DAYS SINCE LAST ACTUAL MARKET TEST. QUOTES ARE DROPPED AFTER 5 DAYS OF NO TEST OR BEFORE IF THEY NO LONGER REFLECT CURRENT MARKET CONDITIONS.****
 SOURCE: USDA MARKET, DES MOINES, IA.

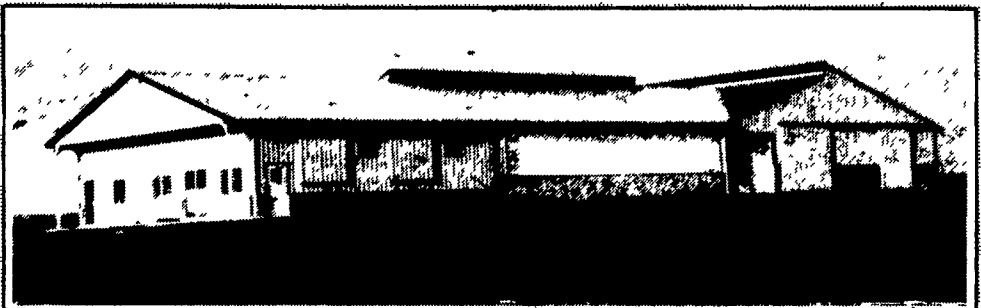
Eighty-Four Livestock

EIGHTY FOUR, PA APRIL 7, 1997
CATTLE 426... PDA ... Compared with last week's sale...cows steady to 2.00 higher, bulls steady to 3.00 higher.
STHERS: few Select 55.00-61.00, few Standard 44.00-54.00.
HIFERS: few Select 55.00-62.00, Standard 37.00-49.00.
COWS: Breaking Utility and Commercial 36.50-42.50, few 44.00, Cutter and Boning Utility 32.00-36.00, Canner and Low Cutter 25.00-31.00. Shells down to 20.00.
BULLS: Yield Grade No. 1 900/1975 lbs. 46.00-55.50, No. 2 1050/1200 lbs. 37.50-44.00.
FEEDER CATTLE: STHERS: Medium & Large Frame No. 1 525/750 lbs. 63.50-75.00, 350/500 lbs. 64.50-83.00, Medium & Large Frame No. 2 275/500 lbs. 40.00-63.00, 525/915 lbs. 39.00-61.50; HIFERS: Medium & Large Frame No. 1 300/775 lbs. 54.00-68.00, Medium & Large Frame No. 2 525/935 lbs. 32.50-48.00, 225/500 lbs. 39.00-52.00; BULLS: Medium & Large Frame No. 1 525/700 lbs. 64.00-73.50, 275/500 lbs. 65.00-75.00, Medium & Large Frame No. 2 500/875 lbs. 39.00-60.00, 325/500 lbs. 40.00-56.50.
CALVES 154...VEALERS: Choice 125/230 lbs. 57.50-103.00, Good 125/245

lbs. 44.00-52.50, Standard and Good 90/115 lbs. 34.00-44.00, 60/85 lbs. 27.50-43.00.
FARM CALVES: Holstein bulls steady to 10.00 higher. No. 1 90/120 lbs. 60.00-86.00 mostly 63.00-75.00, No. 2 85/120 lbs. 41.00-60.00; No. 1 Holstein heifers 90/100 lbs. 102.50-140.00, No. 2 75/110 lbs. 55.00-82.50. Beef cross bulls and heifers 75/115 lbs. 42.50-77.50.
HOGS 80...Barrows and gilts steady to 2.00 higher.
BARROWS AND GILTS: US 1-3 205/265 lbs. 49.00-52.00, US 2-3 275/295 lbs. 47.00-51.50 US 1-3 140/200 lbs. 42.00-47.00.
SOWS: US 1-3 350/425 lbs. 36.00-41.50.
BOARS: few 570/645 lbs. 37.75-38.00.
FEEDER PIGS 0...NO MARKET TEST!
SHEEP 91...Slaughter lambs steady to 15.00 higher.
SLAUGHTER LAMBS: Choice 90/110 lbs. 117.50-129.50, 55/60 lbs. 147.50-157.00, 30/50 lbs. 130.00-165.00, Good and Choice 55/75 lbs. 107.50-108.00.
FEEDER LAMBS: Good and Choice 30/50 lbs. 90.00-110.00.
SLAUGHTER SHEEP: 28.00-56.00.
GOATS 40...Large 105/150 lbs. 56.00-69.00. --- per cwt. Medium 50.00-64.00, Small 22.00-45.00, Small Kids 15.00-20.00. --- per head.

KEYSTONE CONCRETE PRODUCTS INC.

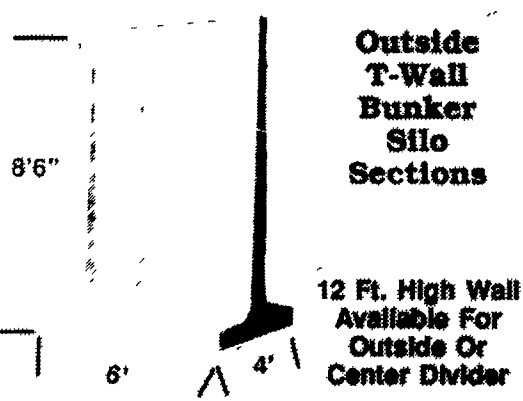
477 East Farmersville Rd.
 New Holland, PA 17557
(717) 355-2361



Concrete Slatted Free Stall Barn



Long Core Cattle Waffle Slats

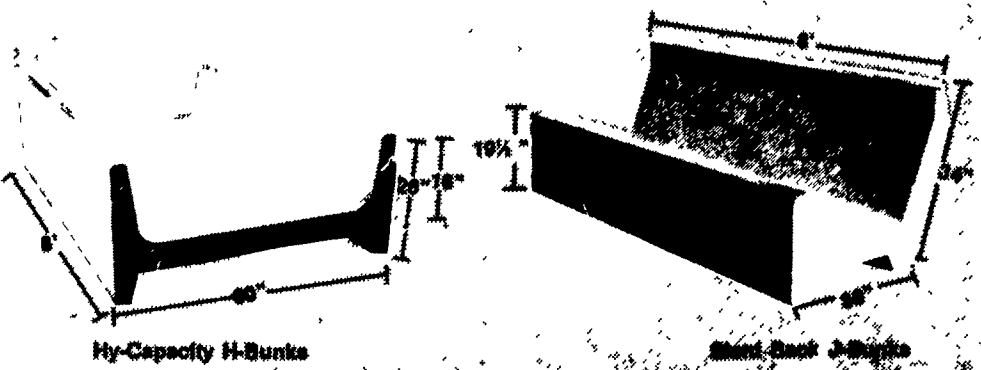


Outside T-Wall Bunker Silo Sections

12 Ft. High Wall Available For Outside Or Center Divider



Slatted Beef Barn



Hy-Capacity H-Bunks

Smart-Bunk J-Bunks

End Sections Available For Feed Bunks

Give us a call for more information on hog, beef, dairy and heifer barns.

MULTIVATOR HIGH CLEARANCE



ROTARY TILLERS

Cultivate during growing season • Custom assembled
 Incorporate crop residue • Strip till before planting
 15 to 150 HP tractors • 1 to 8 row options

For vegetable, fruit, nursery and field crops — when you need a cultivator, think MULTIVATOR!

For literature and the name of your local dealer, contact:

J.S. WOODHOUSE CO., INC.

572 Industrial Drive, Lewisberry, PA 17339
 (717) 938-5100 • FAX (717) 938-8769

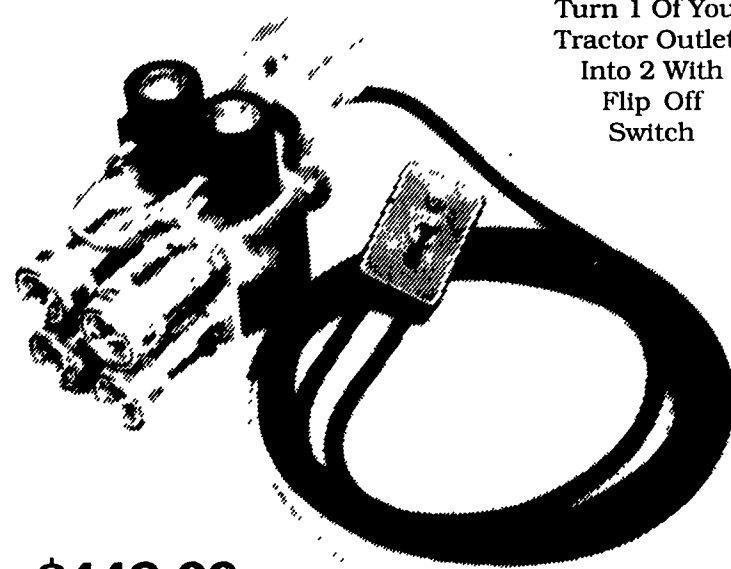
HOOPER

- C.B. HOOPER & SON, INC. • Intercourse, PA 717-768-8231
- HOOPER EQUIPMENT INC. • Middletown, DE 302-378-9655
- C.B. HOOPER & SON, INC. • McAlisterville, PA 717-463-2191

THREE LOCATIONS
The Saving Place

THE DOUBLER

Turn 1 Of Your Tractor Outlets Into 2 With Flip Off Switch



\$449.00
 #1510

WE SHIP PARTS DAILY

Via. FED. EXP. - UPS - PPSH - BUS - AIR FREIGHT, ETC.

HOURS
 Mon.-Fri. 7 AM-5PM; Sat: 7 AM-Noon

CALL US...
It Could Be We Have It

CASE IH
 Authorized UPS Station

YOU STAY PUT

Pick Up Your Phone And Place Your Parts Order With Us