

HAMILTON EQUIPMENT

WHOLESALE DISTRIBUTORS

P.O. Box 478, EPHRATA, PA 17522 PHONE 717-733-7931

For Your Nearest Dealer Please Call Us!

500 and 600 gallon TANDEM AXLE HPT SERIES SPRAYERS

from *Demco*



Model Shown
HPT600DF
60' Truss Boom

Reliable Sprayers

- ◆ 500 or 600 gallon elliptical polyethylene tank with baffle and deep sump for complete drainage.
- ◆ Jet agitation for thorough mixing and excellent chemical suspension
- ◆ Large 16" fillwell with 4" center cap.
- ◆ Adjustable wheel spacings of 60", 70", or 80" centers. (120" optional)
- ◆ Walking tandem axle trailer with ground clearance settings of 23" or 29", three ton hubs and spindles and 15" x 10" wheels.
- ◆ Large front mounted step, platform, and safety rail for easy filling.
- ◆ Three section boom control.
- ◆ 2½ gal. clean water tank for safety.
- ◆ Available with 28', 30', 40', 45' or 60' heavy duty truss booms with boom skids, ¾" boom plumbing, and diaphragm check nozzles.
- ◆ **DBFT** Flotation boom mount is standard on truss booms

◆ Available with 60' or 80' wheeled booms with ¾" boom plumbing, diaphragm check nozzles, and 4.80x12" boom carrier wheels with built in suspension

Pump Packages

- ◆ Demco single or double piston pump with electric shut-off.
- ◆ Hypro belt driven centrifugal pump
- ◆ Hypro gear driven centrifugal pump.
- ◆ Ace hydraulic driven centrifugal pump



Large front mounted step, platform and safety rail for easy filling of the tank. Clean water tank is standard.

Available With Hydraulic Fold Booms

Best loader buy for tractors in 15-230 hp range



The right loader doubles the working capabilities of your tractor. SMC/Schwartz has over 15 models to choose from to match your tractor size and builds 'em tough. All the latest Quick Tach Series can be mounted or removed in matter of minutes without use of

parking stands. Every Q Series Loader model features plated steel oil lines, double acting cylinders with chrome plated rods and all pivot points greaseable with plated anti-rotation pins. SMC/Schwartz Loaders are designed to handle most farm and general lifting, loading and moving chores with attachments to fit specific needs.



Tailor-made mounting to fit a wide range of tractor models, two and four wheel drive.

WE BUILD AUGERS... AND WE BUILD 'EM RIGHT.

Westfield grain augers are built right from the ground up. They're designed and engineered to be tough, durable and dependable - by people whose only business is augers.

Westfield offers a choice of several electric gas or PTO drive styles (SD Model shown) in lengths from 26 to 71 feet and diameters of 6, 7, 8 and 10 inches.

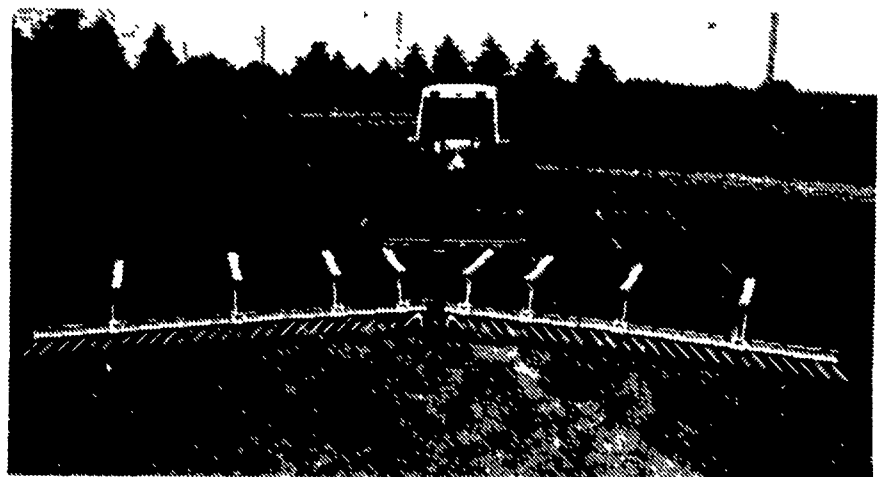
Our new MK Series in 8, 10 and 13 inch models feature a simple PTO driven internal mechanical drive - powering both the main auger and intake swing hopper - plus a labour saving hydraulic lift - to make light work of grain handling chores.

When you buy Westfield, you know you're getting the best auger your money can buy.

See your Westfield dealer today for an auger built just right for you.



WESTFIELD



For fuel economy and better incorporation put a "Buster-Bar" on your chisel plow, disk, field cultivator or plow. The **NEW** design provides easy adjustment for working or transport positions. The 7/8" diameter teeth bust clods before they dry and harden. Mounted to wing section to fold with unit.