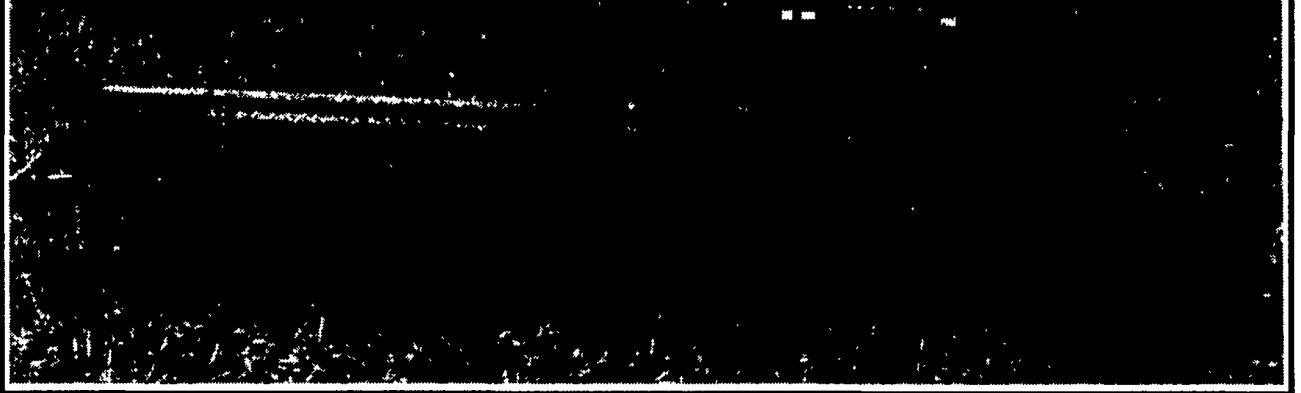


SPECIALISTS IN THE SCIENCE OF SEED PLACEMENT



The successful germination of any seed depends on the environment in which you place it... and increasingly, that environment includes a world of residue. Great Plains Drills have been shaped by years of experience. We've been building min-till drills since 1981 and no-till drills since 1982. Regardless of which tillage practice or condition you face, accurate seed placement is important. Every Great Plains Drill seeds with a time-proven technique we call the Science of Seeding.



GREAT PLAINS DRILLS SEED IN NO-TIL AND CONVENTIONAL TILLAGE CONDITIONS...

THE LITTLE THINGS MAKE THE DIFFERENCE

1

DOUBLE DISC OPENERS with PARALLEL LINKAGE available on most models



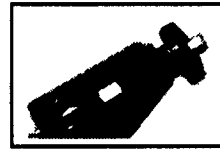
2

SPEED-CHANGE GEARBOX makes seeding rate changes easier



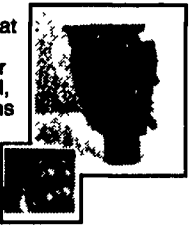
3

DIAL-A-DEPTH system makes changing planting depth quick & easy



4

FLUTED SEED CUPS - a Great Plains exclusive - deliver outstanding accuracy. Whether the seed you're drilling is small, large or fragile, the Great Plains time-proven metering system will deliver the rate you choose evenly and gently - without scuffing.



DRILLS AVAILABLE FOR SPRING DELIVERY We're taking Orders Now!

10' End Wheel No-Til - 12' End Wheel No-Til - 24' Folding No-Til - 32' Folding No-Till

All New & Used Products
Backed By
Hooper Parts & Service
(717) 768-8231

HOOPER

C. B. HOOPER & SON INC.
INTERCOURSE, PA

Best Buys in Used Equipment

JUST TRADED

IH 5488 Tractor (20603)
Brillion 19' Packer (20608)
GP 14' NT Drill (20609)
Krause 4924 Disc (20616)
IH 800 Planter (20617)
CIH 5100 21x7 Drill (20618)
IH 1480 Combine (20624)
IH 826 Tractor (20633)
Dunham Lehr 25' Cultmulcher (20480)

USED TRACTORS

CIH 5240 MFD Tractor, 1993 Yr, 2223 Hrs., Cab, 14.9x24 & 18.4x38 Tires, 540/1000 PTO, Radio, 2 Remotes, Drawbar Hstp, Bar Axle (20555)
CIH 7110 MFD Tractor, 1993 Yr., 3069 Hrs., Powershift, 16.9x28 & 20.8x42 Tires, 540/1000 PTO, Radio, 3 Remotes, Drawbar Hstp (20560)
IH 5488 2WD Tractor, 1982 Yr., 4327 Hrs., Cab w/AC, 14Lx16 1 & 20.8x38 Tires, WFE, 1000 PTO, 3 Hyd Valves (20588)
IH 5088 2WD Tractor, 1982 Yr., 5160 Hrs., Cab w/AC/Heat, 20.8x38 Tires, WFE, 540/1000 PTO, 3 Pt., 10 Bolt Hubs (20585)
CIH 5140 MFD Tractor, 1991 Yr., 1600 Hrs., Cab w/AC/Heat, 14.9x24 & 18.4x38 Tires, 540/1000 PTO, 3 Pt., Power Shift, Top Link, Calcium, Cold Start, Am/Fm Radio (20482)
IH 1086 Tractor, 1980 Yr., 5000 20.8x38 Tires, 2 Hyd Valves, 540/1000 PTO (W1157)
IH 1086 Tractor, 1976 Yr., 20.8-28, 2 Hyd Valves, 540/1000 PTO, Cab w/AC, Heat, Radio (W9190)
IH 3588 Tractor, 150 HP, 1979 Yr (W1297)
IH 656 Tractor, 6250 Hrs., Hydro Trans., 2 Valves, 15.3x38 Tires, Diesel Eng (20269)
IH 656 Tractor, 1967 Yr., 5428 Hrs., 3 Pt Hitch, 2 Valves (W9823)
CIH 7120 2W Tractor, 1992 Yr., 1650 Hrs., 18.4x42 Tires, 3 Hyd Valves, 540/1000 PTO, 12 Wts (20243)
Steiger 251 Single 30.5x32 Tires (1713)
IH 140 Tractor w/ Snow Blade Tire Chains (20367)
CIH 5140 MFD Tractor (100 Hp), 1991 Yr., 1600 Hrs., PS Transmission, 18.4x38 Rear, 14.9x24 Ft 3 Hyd Valves, Air Seat (20482)
IH 1086 Tractor, 1977 Yr., 11.00x16 & 20.8R38 Tires, Radio, Wt Brkt, REAR Wts, 2 Hyd Vavles, Cab w/ Heat/AC, 3 Pt., 540/1000 RPM, Top Link (20331)

IH 1086 Tractor, 1976 Yr., 4567 Hrs., 20.8x38 Tires, 2 Hyd Valves, 540/1000 PTO, Cab w/AC, Heat, Radio (W9190)

IH 656 Hydro Tractor, 1971 Yr., 7.5x15 & 15.5x38 Tires, Rear Wts., ROPS, 3 pt., 540 RPM (W1415)

USED IMPLEMENTS

IH 470 12' Disc, 8" Spacing, Blades - 17" Front, 17 1/2" Rear (20461)
DMI Tiger II Subsoiler, 7 Shank 15' 10" Tiger Points, Auto-Spring Trip Price \$9500 (20048)
Kr 4927 Rockflex Disc, 25' Cut Width, 9" Spacing, 17" Blades (T20299)
Krause 1577 Rockflex Disc 18' Cut, 20" Blades (T1288)
N H TD 200 Disc, 12' Cut, H.D Rockflex Gangs, 21" Blades (T1207)
Sunflower 1232 Disc, Rockflex, 24' Cut, With Duals, Wing Gauge Wheels, Like New (T9730)
JD 220 Disc 20' Cut Width, 13' Transport \$3,000 (12035)
Krause 2413 Rockflex Disc, 23' Cut Width, H D Cutting Disc, 10" Blade (T9552)
JD 235 Disc, Dura-Cushion, 21' Cut Width, 9" Spacing, Blade Size 18" FTG 20" R (T1027)
JD 235 Disc Duracushion, 18' Cut, 21 1/2" Blades (T1191)
Krause 3118 Landsman 18' Working Width, Rear Hitch, 5 Row Spike, Tandem Axle Center (T1376)
WR Field Cultivator, 24' Width, Hyd Fold (12820)
IH 770 Offset Disc (20012)
IH 770 Disc, 20', 24" Blades, 10.5" Spacing, 11Lx15 Tires, Scrapers, Cyl/Hoses, Center Duals, Furrow Fillers (20403)
JD 310 Disc, 12', Standard, 20" Blades, Yellow Gang, Scrapers, cy/Hoses, Center Duals, Furrow Fillers, Packer Hitch & Hoses (20229)

USED MISC.

C.T. Header Gear, Price \$950 (20197)
Yale 80UF Fork Lift (V1483)

USED COMBINES

AC Gleaner L2 Combine, 1978 Yr., Hydro, Monitor, AHHC w/6RCH, 16.5PF (U1043)
GL L3 Combine, 3111 Hrs, 4WD, w/320 Flex Price \$29,900 (13075)

MF 550 Combine, 1980 Yr, 1475 Hrs., Var. Speed Trans., AHC, Chopper, 4 RN Cornhead, 13' Flex, Opt Ex. (20230)

MF 550 Combine, 4R Wide Cornhead, 13' Platform (U9184)

CIH 1660 Combine, 1987 Yr., 2135 Hrs., 30.5x32 Tires, Std Rotor, AHC, Feeder Rev, Chaff Spreader, Uptime Done 1996 (20325)

JD 9600 Combine, 1993 Yr., 2500 Hrs., 30.5x32 Tires, Rock Trap, Feeder Rev, AHC, GLM, Auto Reel/Gro Sp For/Aft Reel Am/FM Chopper (20098)

JD 7720 Combine, 2WD, 1980, 2700 Hrs (U9841)

JD 7700 Combine, 1977 Yr., 4000 Hrs., Hydro, 23.1x26 Tires, AC/Heat (U9639)

JD 6600 Combine, 1976 Yr., Hydro. (U9922)

IH 1440 Combine, 1979 Yr. 5875 Hrs., 28Lx26 Tires FT, 18.4x16.1 Tires RR, AHC AM/FM (U9518)

IH 1480 Combine, 1984 Yr., 3587 Hrs., 30.5x32 Tires, Spec. Rotor, GLM, AHC (20240)

IH 1440 Combine, 1979 Yr. (U9712)

CIH 1660 Combine, 1991 Yr., 2500 Hrs., Spec. Rotor, Rock Trap, Feeder Rev., GLM, AHC, For/Aft Reel, Field Tracker (20193)

IH 1480 Combine, 1983 Yr., 5000 Hrs., Spec Rotor (U1001)

IH 715 Combine, 1976 Yr (20357)

CIH 1660 Combine, 1986 Yr., 6021 Hrs., 24.5x32 & 18.4x16.1 Tires, Spec Rotor, Rock Trap, Fdr-Rev, GLM, AHC, Fdr cutoff, Reel to Ground, Fore & Aft, Radio (20426)

CIH 1660 Combine, 1987 Yr., 2679 Hrs., Field Tracker, 30.5x32 Tires, 3rd Cyl., Feeder-Reverse, Spec Rotor, Hyd Reel Fore & Aft, Rock Trap, Reel to Ground, AHC (U1260)

CIH 1680 Combine, 1990 Yr., 1900 Hrs., Long Sieve, Rock Trap (U1219)

JD 9600 Combine, 1993 Yr., 2500 Hrs., 30.5x32 & 14.9x24 Tires, Rock TRap, Feeder-Reverser, Grain Loss Monitor, Fore/Aft Reel, AHC, REel to Ground (20098)

JD 6600 Combine 1977, 3041 Hrs., Sidehill, 23.1x26 Tires (U9764)

USED HAY & FORAGE

Bush Hog 20' Batwing 1000 PTO, Laminated Tires, Stump Jumper (V9289)
IH 1490 Mower Conditioner, 12' Cut, Titor Rolls, Hydro-Swing Hitch (U9857)
Vicon KM 321 Disc Mower Cond. 10 1/2' Cut (U9731)
JD 336 Baler w/Kicker (U9859)
CIH 8830 Windrower, w/ 12' Cut, 1004 Hrs., 3" Knife (U9799)

BALERS

CIH 8570 Baler, 1995 Yr. (20465)
JD 346 Baler w/Kicker, Super Sweep Pickup (U1424)

MOWER CONDITIONERS

CIH 8312 Mower Conditioner w/Titor Rubber, 11Lx15 Tires, High Skid Shoes (20467)

MOWERS

Woods 120 mower, 10' offset (U6970)

OTHER

NH 28 Blower (U1137)
Heaston 7155 Forage Harvester (20571)
Dion Blower (20572)

USED DRILLS & PLANTERS

GP 15' 3 Pt Drill 26x7, 13" DD Openers, 4" Press wheels, 700 Ac Use (V8486)

GP 15' Drill, 3 Pt. Hitch, 26x7 DD Openers (V9436)

JD 455 Folding Drill, 24' Conven, Grass Seed Attach., Markers, DD Openers w/Pw, Planted 1500 Ac (20183)

GP 15' NT Drill w/Coulter Hitch, Rebuilt IN 5-96 (V1307)

GP 10' NT Drill, 7 1/2 Spacing, 2700 Acres, Wt. Bar & Brackets, Gradd Seed Attach. (20143)

IH 510 Drill, 21x7 D.D. Openers, Press Wheels (V1236)

CIH 5100 Drill, 24x6, DD Openers, Hyd. Cyl., 3x13 P.W. (V1193)

GRAIN DRILLS

GP 30' Drill (V8224)

GP 14' NT Drill w/CP Hitch (V8362)

Krause 5213 EWNT Drill, 13' (20274)

PLANTERS

IH 800 Planter, 12 Row (20590)

All New & Used Products
Backed By
Hooper Parts & Service
(717) 768-8231

HOOPER

C. B. HOOPER & SON INC.
INTERCOURSE, PA