

Estimated Daily Livestock Slaughter

Under Federal Inspection

April 2, 1997

	CATTLE	CALVES	HOGS	SHEEP
WEDNESDAY 04/02/97 (EST)	126,000	7,000	361,000	14,000
WEEK AGO (EST)	124,000	7,000	363,000	16,000
YEAR AGO (ACT)	127,000	6,000	360,000	20,000
WEEK TO DATE (EST)	373,000	20,000	930,000	46,000
SAME PD LT WK (EST)	371,000	20,000	1,033,000	49,000
SAME PD LT YR (EST)	382,000	19,000	1,056,000	62,000

PREVIOUS DAY ESTIMATED TUESDAY, STEER AND HEIFER 102,000, COW AND BULL 24,000.

***REVISION ON TUES.'S CATTLE SLAUGHTER...126,000.

Central U.S.

Carlot

Pork Report

April 2, 1997

Report supplied by USDA

COMPARED TO APRIL 1, 3 P.M. CLOSE: FRESH LOINS AND BUTTS UNEVENLY STEADY; SKND. HAMS 17-20 LBS. STEADY, 20-26 LBS. STEADY TO 1.50 LOWER; BELLIES 1.00 HIGHER; LEAN TRIMMINGS WEAK. TRADING SLOW TO MODERATE, WITH LIGHT TO MODERATE DEMAND AND OFFERINGS.

LOADS PORK CUTS: 84.25
LOADS TRIM/PROCESS PORK: 36.5
LOINS, REG., FRESH
14-18 LBS. *, 17.0 LOADS, RANGE 104.00-122.00, WGHTD. AVG. 115.53.
1/2" TRIM 14-18 LBS., 5.0 LOADS, RANGE 123.00-142.00, WGHTD. AVG. 135.50.

1/2" TRM/LESS 14-18 LBS., 12.0 LOADS, RANGE 130.00-146.00, WGHTD. AVG. 140.42.
18-22 LBS. * RANGE 109.00, WGHTD. AVG. 109.00 A.
1/2" TRM 18-22 LBS., RANGE 127.00, WGHTD. AVG. 127.00 A.

COMBOS 22 LBS. AND UP, 1.5 LOADS, RANGE 86.50, WGHTD. AVG. 86.50.
LOIN, BNLS, CNTR CUT
5-9 LBS. STRAP-ON, 1.0 LOADS, RANGE 228.00, WGHTD. AVG. 228.00.
5-9 LBS. STRAP-OFF, RANGE 258.00-267.00, WGHTD. AVG. 266.00 E.

BNLS SIRLOIN .75-1 LB.
1.5 LOADS, RANGE 123.00-139.00, WGHTD. AVG. 137.25.
TENDERLOIN
3.25 LBS. AND DOWN, RANGE 353.00-386.00, WGHTD. AVG. 355.54 E.

BOSTON BUTT
4-8 LBS. *, 6.5 LOADS, RANGE 71.00-82.00, WGHTD. AVG. 77.08.
1/2" TRIM 4-8 LBS., 6.5 LOADS, RANGE 90.00-100.00, WGHTD. AVG. 95.23.

COMBOS, 8 LBS. AND UP, RANGE 70.00, WGHTD. AVG. 70.00 D.
SPARERIBS, FRESH
1.5-3.5 LBS., 3.0 LOADS, RANGE 128.00-134.00, WGHTD. AVG. 132.00.
SPARERIBS, FROZEN
3.5-5.5 LBS., RANGE 119.00, WGHTD. AVG. 119.00 D.

LOIN BACKRIB (BOXED) FRSH/FRZN
1.75 LBS. AND DOWN, RANGE 277.00, WGHTD. AVG. 277.00 B.
1.75 LBS.-2 LBS., .03 LOADS, RANGE 247.00, WGHTD. AVG. 247.00 .
LOIN BACKRIB (COMBOS)
1.5 LBS. AND DOWN, RANGE 278.00, WGHTD. AVG. 278.00.
HAM, SKINNED, SELECTED
FRESH 17-20 LBS., 3.0 LOADS, RANGE 61.00, WGHTD. AVG. 61.00.
FRESH 20-26 LBS., 45.0 LOADS, RANGE 52.00-55.50, WGHTD. AVG. 53.82.

HAM, SKINNED, COMMODITY
FRESH 17-20 LBS., RANGE 60.00, WGHTD. AVG. 60.00 B.
FRESH 20-26 LBS., RANGE 52.00-54.00, WGHTD. AVG. 53.75 A.
FRESH 32 LBS. AND UP, RANGE 56.00, WGHTD. AVG. 56.00 D.
BELLY, SDLS, SKIN-ON, FRESH
FRESH 10-12 LBS., RANGE 63.00, WGHTD. AVG. 63.00 A.
FRESH 12-14 LBS., 1.0 LOADS, RANGE 75.00, WGHTD. AVG. 75.00.
FRESH 14-16 LBS., 1.5 LOADS, RANGE 75.00, WGHTD. AVG. 75.00.
FRESH 16-18 LBS., 0.5 LOADS, RANGE 73.00, WGHTD. AVG. 73.00.
FRESH 18-20 LBS., 0.5 LOADS, RANGE 68.00, WGHTD. AVG. 68.00.
FRESH 20-25 LBS., 0.5 LOADS, RANGE 64.00, WGHTD. AVG. 64.00.

PORK TRIMMINGS/
BONELESS PROCESSING PORK (CHEMICAL LEAN)
COMBO 42% FRESH, 6.5 LOADS, RANGE 29.00-31.00, WGHTD. AVG. 29.46.
BOXED 42% FROZEN, 1.0 LOADS, RANGE 36.00, WGHTD. AVG. 36.00.
COMBO 72% FRESH, 24.0 LOADS,

RANGE 57.00-60.00, WGHTD. AVG. 57.46.

BOXED 72% FROZEN, RANGE 63.00, WGHTD. AVG. 63.00 C.

PICNIC CUSHION MEAT
COMBO 92% FRESH, RANGE 119.00, WGHTD. AVG. 119.00 A.

BOXED 92% FROZEN, RANGE 120.00, WGHTD. AVG. 120.00 A.

BONELESS PICNIC MEAT
COMBO 72% FRESH, 4.0 LOADS, RANGE 61.00-65.00, WGHTD. AVG. 62.00.

BOXED 72% FROZEN, UNQUOTED. SKINNED JOWLS
COMBO FRESH, 1.0 LOADS, RANGE 26.00, WGHTD. AVG. 26.00.

BOXED FROZEN, RANGE 30.00-31.00, WGHTD. AVG. 30.38 D.
NOTE: (*) REFLECTS 1/2" OR 3/4" TRIMMED PRODUCT BROUGHT BACK TO A REGULAR COMMODITY BASIS.

USDA PORK CARCASS CUTOUT WED., APRIL 2
ESTIMATED GROSS CUTOUT VALUES OF A 175 LB. HOG CARCASS BASED ON USDA CUTTING YIELD TESTS AND CARLOT PRICES.

TUESDAY'S CARCASS GRADES AND PRICES PER CWT.:
US#1 72.58, CHANGE FROM TUES.'S VALUE -0.21; US#2 70.72, CHANGE FROM TUES.'S VALUE -0.19; US#3 68.86, CHANGE FROM TUES.'S VALUE -0.17; US#4 67.00, CHANGE FROM TUES.'S VALUE -0.15.

TODAY'S CALCULATIONS FOR US #2 175 LB. PORK CARCASS:
SKINNED HAMS 14-20 LBS., 21.01% OF CARCASS, 61.00 FOB VALUE; LOINS, 1/2" TRIM 14-22 LBS., 20.33% OF CARCASS, 135.00 FOB VALUE, -1.00 CHANGE FROM TUES.

BELLIES, SDLS. 12-14 LBS., 13.90% OF CARCASS, 74.00 FOB VALUE, 1.00 CHANGE FROM TUES.; SPARERIBS 3.5 LBS. AND DOWN, 3.03% OF CARCASS, 130.00 FOB VALUE.

PICNICS, 8-12 LBS., 10.31% OF CARCASS, 42.00 FOB VALUE, -1.00 CHANGE FROM TUES.; BUTTS, 1/2" TRIM 4-8 LBS., 7.25% OF CARCASS, 96.00 FOB VALUE.

JOWL, 2.85% OF CARCASS, 26.00 FOB VALUE; NECKBONES, 1.52% OF CARCASS, 13.00 FOB VALUE.

FEET, 1.05% OF CARCASS, 23.00 FOB VALUE; TAILS, 0.22% OF CARCASS, FOB VALUE 65.00.

TRIM 72%, 2.19%, 57.50 FOB VALUE; LARD, 10.85% OF CARCASS, 21.75 FOB VALUE.

TOTAL CARCASS 94.51%.
US#2 CARCASS VALUE PER CWT 70.72.
NOTE: VALUE MAY CHANGE WITHOUT ADEQUATE TEST.

Central U.S.

Carlot

Beef Report

April 2, 1997

Report supplied by USDA

USDA NATIONAL CARLOT BEEF REPORT (INCLUDES MAJOR PRODUCTION AREAS IN THE MIDWEST AND TX) AS OF 3 P.M.

COW AND BULLS CARCASS FOB OMAHA
4.0 LOADS REPORTED
COMPARED TO APRIL 1 REPORT: UTILITY COW CARCASSES 1.00 LOWER; CUTTER NOT ESTABLISHED. DEMAND LIGHT TO MODERATE FOR MODERATE OFFERINGS.

UT, BRK 2-4 450 LBS. AND UP, 2.0 LOADS, RANGE 67.00, LATEST ESTB. MKT. 67.00.
UT, BNG 1-3 400 LBS. AND UP, 2.0 LOADS, RANGE 71.00-71.00, LATEST ESTB. MKT. 70.00 C.

CUTTER 1-2 350 LB. AND UP, LATEST ESTB. MKT. 70.00 C.
BULLS YG1 500 LBS. AND UP, UNQUOTED.

COW AND BULL CARCASSES CAF WEST COAST
MARKET FOR WEEK ENDED MARCH 28.
UT, BNG 1-3 400 LBS. AND UP, RANGE 73.00.
CUTTER 1-2 350 LBS. AND UP, RANGE 73.00.

BONELESS PROCESSING BEEF/ BEEF TRIMMINGS
188.0 LOADS REPORTED
LEAN BONELESS BEEF 2.50-3.50 LOWER IN THE MIDWEST, BUT IN TEXAS 5.50-6.50 LOWER; 85% 1.50-2.50 LOWER; 75% WEAK; 65% 1.00-2.00 LOWER. DEMAND LIGHT TO MODERATE FOR MODERATE TO HEAVY OFFERINGS. BEEF TRIMMINGS WEAK ON LIGHT TO MODERATE DEMAND AND MOSTLY MODERATE OFFERINGS.

FOB OMAHA BASIS
90% FR, 21 LOADS, RANGE 98.0-100.5 WT. AVG. 99.05.
90% FZ, UNQUOTED.
85% FR, 26 LOADS, RANGE 92.0, WT. AVG. 92.00.
85% FZ, UNQUOTED.
75% FR, 3 LOADS, RANGE 80.0, WT. AVG. 80.00.
75% FZ, UNQUOTED.
65% FR, 17 LOADS, RANGE 63.0-64.0, WT. AVG. 63.44.
65% FZ, UNQUOTED.
50% FR, 77 LOADS, RANGE 43.00-44.00, WT. AVG. 43.36.
50% FZ, 50% BX, AND BULL 92-94, UNQUOTED.

FOB EAST TX & OK
90% FR, 18 LOADS, RANGE 99.5-101.0, WT. AVG. 99.89.
90% FZ, UNQUOTED.
85% FR, UNQUOTED.
85% FZ, 75% FR, 75% FZ, 65% FR, AND 65% FZ, UNQUOTED.

CAF NE AREAS
90% FR, 24 LOADS, RANGE 102.0-103.0, WT. AVG. 102.29.
90% FZ, UNQUOTED.
85% FR, 2 LOADS, WT. AVG. 98.0.

WT. AVG. 98.00.
85% FR, UNQUOTED.
85% FZ, 75% FR, 75% FZ, 75% FR, UNQUOTED.
65% FR AND 65% FZ, UNQUOTED.
CAF WEST COAST BASIS
WEEK ENDED 3/28/97
90% FR, RANGE 106.5, WT. AVG. 106.50.
90% FZ, UNQUOTED.
85% FR, RANGE 94.5, WT. AVG. 94.50.
85% FZ, UNQUOTED.
75% FR, UNQUOTED.
75% FZ, UNQUOTED.
65% FR, RANGE 65.0-67.0, WT. AVG. 65.83.
65% FZ, UNQUOTED.
50% FR, RANGE 45.0-47.5 WT. AVG. 45.94.
50% FZ, RANGE 49.0, WT. AVG. 49.00.

ABCDE AFTER QUOTES REPRESENTS DAYS SINCE LAST ACTUAL MARKET TEST. QUOTES ARE DROPPED AFTER 5 DAYS OF NO TEST OR BEFORE IF THEY NO LONGER REFLECT CURRENT MARKET CONDITIONS.
SOURCE: USDA MARKET, DES MOINES, IA.

GRANTSVILLE LIVESTOCK
Grantville, Maryland
Report Supplied by Auction
Sat., March 29, 1997

STOCK BULLS AND STEERS 200-500 LBS. 50.00-81.00.
STOCK HEIFERS 40.00-71.00.
SLAUGHTER STEERS GOOD TO CHOICE, NONE AVAILABLE; MEDIUM TO GOOD 45.00-62.00.
HOLSTEIN STEERS GOOD, NONE AVAILABLE; LIGHT 30.00-37.50.
SLAUGHTER HEIFERS GOOD TO CHOICE, NONE AVAILABLE; MEDIUM TO GOOD 42.00-57.00.
BULLS HEAVY 39.50-46.50, LIGHT 30.00-52.00.

COWS UTILITY HOLSTEINS 34.00-39.50, CANNERS 26.00-33.75, CULLS 25.00 AND DOWN.
VEALS GOOD TO CHOICE UP TO 80.00, MEDIUM TO GOOD 35.00-55.00.
BOB CALVES: 20.00 AND DOWN.
HOLSTEIN BULL CALVES RETURN TO FARM 90-120 LBS. 30.00-48.00.
HOLSTEIN HEIFER CALVES RETURN TO FARM UP TO 111.00; BEEF X CALVES RETURN TO FARM UP TO 100.00.

HOGS: TOP QUALITY 45.00-52.00, HEAVY 47.00-51.00, LIGHT 41.00-46.00, FEEDER PIGS BY THE HEAD, UP TO 59.00.
SOWS: UP TO 47.00.
MALE HOGS: UP TO 37.00.
LAMBS: 70-85 LBS. UP TO 120.00; 85-125 LBS. UP TO 115.00; 30-60 LBS. UP TO 140.00; CULLS 60.00 AND DOWN.
SHEEP: UP TO 42.00.
GOATS: ALL BY THE HEAD, LARGE 50.00-80.00; MEDIUM 20.00-72.00; SMALL 8.00-38.00.
EASTER LAMB AND GOAT SALE SAT., APRIL 19.

PRODUCE PRODUCE PRODUCE PRODUCE

Randall G. Renninger

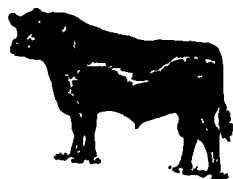
Certified Public Accountant

Specializing in agriculture and construction industries

"We help business people discover ways to cut costs, save taxes, and be more profitable"

Call about our FREE seminars

100 Foxshire Drive, Lancaster, Pa 17601
(717) 560-5720 ◊ Fax (717) 560-5721



WALTER M. DUNLAP & SONS

Lancaster Stockyard

717-397-5136

1147 Lititz Pike, Lancaster, PA

FEEDER CATTLE SALE

Friday, April 18

- 80 Head Angus Calves out of New York State
- 30 Head Angus & Charolais from Chester Co., PA
- 100 Head out of the Eastern Shore

Plus 250 Head of Local Cattle

Slaughter Cattle Consignments are also welcome.

PRODUCE PRODUCE PRODUCE PRODUCE

KIRKWOOD AG AUCTION

(Produce Auction)

- * Bedding Plants
- * Potted Flowers
- * Nursery Stock
- * Hanging Baskets
- * Early Vegetables

Auction will open Wed., April 16, 1997

Sale Days Wednesday and Friday,

10 am

(til Further Notice)

Location: 472 and Noble Road, Kirkwood, PA

(717) 529-6416 office

(717) 529-2748 evenings

PRODUCE PRODUCE PRODUCE PRODUCE