

New Milk Sample Delivery System In New York

ITHACA, N.Y. — Dairy Producers, Northeast DHIA Technicians and Milk Handlers in New York State that use Milk Check Laboratories have had their delivery service substantially upgraded. All parts of New York are now serviced by a sample delivery truck three times a week. Previously this area was serviced by the temperature controlled trucks no more than twice each week. Another boost to service results from the truck routes now being completed in one day. Pre-

viously these longer routes took two days.

"We are very pleased with the improved service," according to Bill Hulslander, Director of the Northeast DHIA Farm Service, "I expect that members in New York will notice a shorter and more consistent turnaround time on their DHIA results. We did not have to risk mail or UPS shipping to get it." Bill went on to explain that it is really important to minimize sample agitation and control the temperature of samples for consistently reliable results. The only

way Northeast DHIA feels it can assure dependable results on their farm samples, month after month, is by using the temperature controlled delivery system. Since the transportation system also handles producer payment and quality samples, temperature and handling are underscored as issues.

This change was brought about by the newly former Cooperative

"Dairy One." This Cooperative was formed with the mission to get needed change done in the dairy industry. "This is a genuine win win situation," according to Nelvin Empet, Chief Operating Officer of Dairy One. "A substantial share of customers get improved service and by combining the previous Dairy One and Northeast DHIA sample delivery

system we are controlling the cost. This is a good example of how we can reduce redundancy and inefficiency and improve service."

Milk Check Laboratories provide DHI, producer payment and research milk analysis as well as prepare calibration and quality control samples for other milk laboratories throughout the greater Northeast.

Consumers Benefit

POTTSVILLE (Schuylkill Co.) — USDA administers commodity programs through the local Farm Service Agency located in the Ag Center on the Gordon Nagle Trail.

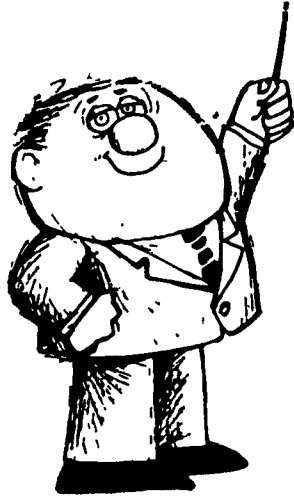
Approximately 20,000 acres of corn are grown in Schuylkill County. More than 100 million pounds of livestock feed are harvested from this acreage annually.

This feed generates milk, eggs, and meat distributed locally through farmers markets and grocery stores. Many products found on grocery store shelves are manufactured using grain, dairy

products, or eggs.

Programs administered by USDA today encourage farmers to make planting decisions on market conditions. If corn prices are high farmers plant more corn. If prices are low, plantings are decreased. The "so-call" giveaway programs meet your food needs by assuring your farm community stays in business. Stable farm income assures a stable food supply.

If you wish to have more information on the Farm Service Agency and USDA programs, call (717) 622-1555.



FISHER'S PAINTING & FISHER'S PAINT OUTLET STORE
QUALITY PAINTS @ REASONABLE PRICES
■ ALL TYPES OF INTERIOR & EXTERIOR PAINTING

■ SANDBLASTING N ROOF COATING
■ RESTORATION & WATERPROOFING ON STONE & BRICK BUILDINGS

HOUSES - BARNs - FENCES - FACTORIES - ETC.

Specialists In Sand Blasting/Spray Painting Farm Buildings, Feed Mills, Roofs, Tanks, Etc. With Aerial Equipment

WE NOW REPAIR SPRAY GUNS AND PUMPS

4056A Newport Rd., Kinzers, PA 17535 717-768-3239
On Rt. 772 Across From Pequea Valley School

Brush, Roll Or Spray - We'll Do It Either Way
For Jobs Large Or Small - Our Men Will Do It All



Petersheim's Cow Mattresses

Rubber Filled Cow Mattresses

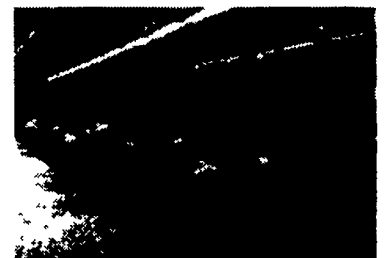
117 Christiana Pike (Route 372)
Christiana, PA 17509

Pasture Mat

The Golden Standard
In Cow Comfort



- Fits Any Stall
- Reduces Bedding Costs
- Polypropylene Bag Filled with Rubber



- Sewn Every 4" To Prevent Shifting
- Easier For Cows To Get Up And Down
- **NEW!** Non-woven 50 oz. Top Cover - Less Abrasive

INSTALLATION AVAILABLE. CALL FOR DETAILS

SAM PETERSHEIM

610-593-2242

"CONSIDER THE POSSIBILITY!"

ONE TOWER SILO CORN SILAGE FOR 500 COW DAIRY.

BIG-JIM QUANTUM UNLOADER:

- * TON-A-MINUTE FILLING
- * FEED DELIVERY -10 MINUTES DRIVE-THRU OPTION:
- * MAXIMUM CONVENIENCE.

ESTIMATED CAPACITIES LARGE TOWER SILOS

CORN SILAGE

HEIGHT	INSIDE DIAMETERS				
	30'	34'	36'	38'	40'
100'	2384 T.	3063	3434	3826	4239
104'	2480	3186	3571	3979	4409
108'	2575	3308	3709	4132	4578
112'	2670	3431	3846	4285	4748
116'	2765	3553	3983	4438	4917
120'	2861	3676	4121	4591	5087

Capacities vary depending upon: moisture, length of cut, distribution, rate of filling, types of forage.



We still build a lot of 16', 18', 20' and 24' diameter silos.

SOLLENGERGER SILOS CORP.

2294 Molly Pitcher H'wy, S. Chambersburg, PA 17201
717-262-2907

Bob Francis, Nat. Sales Mgr.

"Your Source For Large Capacity Concrete Tower Silos."

MILLER DIESEL, INC.

FUEL INJECTION & TURBO SPECIALIST

6030 JONESTOWN ROAD, HARRISBURG, PA 17112
(717) 545-5931 • 1 (800) 296-5931

Since 1957

MEMBER
ADS
ASSOCIATION OF
DIESEL SPECIALISTS

Specializing in:

FARMING & AGRICULTURAL
Factory Authorized Diesel Fuel Injection
Sales, Service & Parts

Miller Diesel, Inc. offers:

- * Diesel Fuel Injection Pumps, Injectors, Turbochargers
- * Factory Trained & Authorized for complete services on: Stanadyne (Roosa Master), Lucas CAV, Simms, Robert Bosch, Ambac (American Bosch), etc.
- * Instant Exchange or Rebuild (Fast Turn Around Time)
- * Feed Pumps (John Deere & Most All Applications)
- * Quality Workmanship, Experience, Troubleshooting.
- * Free Pick Up & Delivery (100 mile radius of Hbg.) Daily UPS Shipping

MILLER DIESEL, INC.

WE WANT TO BE YOUR FUEL INJECTION SPECIALIST