

TRUCK INCLUDING 5000 lbs
lime sower on 75 Int. 290
Cummins, good cond, sell
w/ or w/out truck.
(717)752-2837

Two 1969 Chevy 60 series
truck, 1 dump, 1 flatbed, 1
no engine. Not inspected,
\$600 to \$1200 each obo.
Also 6 truck tires for 60 series
Chevy. Some on rims,
\$100 obo. (717)336-5515

Deutz diesel BF6L912
turbo, 6-cylinder, air
cooled, \$3500.
215-572-7700

ENGINES FOR SALE:
Mack 285 237
Cat 3208 & DT 466 Int.
DETROIT: 6V53 318,
8V92; V871 & 671.
Gas Engine: Ford 391;
361; Chevy 366; 427; 350.
Many other parts at reasonable
prices.
HAP'S TRUCKS & PARTS
1-800-839-3338

Farm pickup trailers;
5800gal walker, 5600gal
heil, 4 Budd hubs for Prop
axles, 10 10-hole
11-22.5 rims.
(717)867-2995

Ford tri-axle dump truck,
400 Cummins, 13-speed,
good, \$15,000.
717-532-9271 evenings.

Fruehauf 28' dump trailer
w/Surloc tarp, new brakes,
rubber, inspected. Adams.
7 1 7 - 5 2 8 - 4 1 3 4
717-528-4687

89 Chev K-Blazer
Full Size 4x4,
6.2L Diesel,
Automatic, Loaded,
Tow Package,
Clean, Low
Mileage, Rebuilt
Transmission
and Brakes
\$9,995
Call (215)723-8445

1992 Templete
hopper bottom
trailer, 42', new
tires, new brakes,
ex. cond,
Asking \$18,000.
(908) 996-4101

KEYSTONE TARPS

SERVICE & SALES

Is A Manufacturer Of Custom Tarps

- Systems
- Load Straps
- Tarps
- Tarp Straps
- Storage Covers
- Gloves
- Used Railroad Ties

1-800-798-TARP (8277)

FAX 717-435-0036 717-435-0752

Transport Leasing Inc.

Specialized Trailer Rentals
Daily-Weekly-Monthly

Attention Dump Trailer Operators
Dump Trailers Now Available

Call for info & Account Set-up
610/326-5579

MOTORS
New & Rebuilt
350, 366, 427, 454
6.2 Diesels
Rebuilt & Used
Will Install
Roll Back Service,
(at cost)
717-762-6415

EBY
USED
EQUIPMENT

BODIES

- (3) 10' Eby Cattle Bodies
- (1) 12' Eby Cattle Bodies
- (1) 16' Wooden Cattle Body
- (1) 25' Eby Cattle Body

GOOSENECK

- 1995 Stoll 16'x8' Steel Flatbed
- 1995 Eby 20x8 Ruffneck
- 1993 Kiefer 2-Horse
16'x6'x7'3"
- 1993 Eby 24'x8'x6'10"
- 1988 Barrett 26' x 8' x 7'
w/4' Tack Room
- 1988 Featherlite 20'x7'x6'8"

BUMPERHITCH

- 1995 Feather Lite Aluminum
12'x6'6"x7'Bumper Hitch
- 1994 Eby 18'X8' Flat Bed
2-Horse Bumper Hitch

M.H. Eby, Inc.

1194 Main Street (Route 23)
Blue Ball, PA 17506
(717) 354-4971 (800) 292-4752
FAX: (717) 355-2114
4435 State Route 29
West Jefferson, OH 43162
(614) 879-6901 (800) 752-0507
FAX: (614) 879-6904

**IN ALUMINUM BODIES
EBY BUILDS IT**

M.H. Eby custom-builds aluminum truck bodies for the agri-transportation market. Nobody offers more sizes and options in:

- FLATBED BODIES - Lengths to 32', choice of 5 widths.
- GRAIN BODIES - Lengths to 24', landscape and general purpose dumps to 12'.
- LANDSCAPE BODIES - Lengths to 12', We'll build to your specs!

For greater payload capacity, Eby's aluminum design is equal in strength to steel and up to 40% lighter. Our corrosion-resistant components never need painting. That means minimum maintenance, improved appearance and higher resale value.

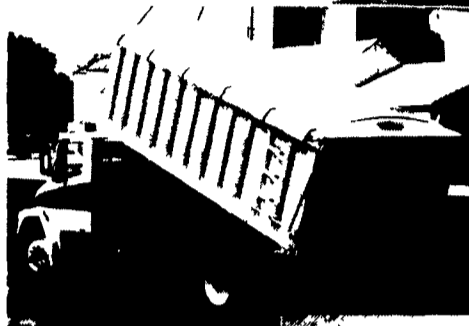
Eby products have superior standard features. And we offer customer options for virtually any application. Agriculture is your business - building bodies to haul it is ours.



1194 Main Street
Blue Ball, PA 17506



Let EBY
custom build
one for you.



800-292-4752

PHONE
717-274-2000

Toll Free
1-800-650-1420

RTE. 422 WEST
LEBANON, PA

(Across From Lebanon
Valley Mall)

CAR VILLAGE

HEAVY DUTY TRUCKS

Business Hours
Mon.-Fri. 9-9
Sat. 9-4

THIS IS ONLY A PORTION OF OUR HUGE INVENTORY



HEAVY DUTY 3/4 TON
90 FORD F250 4X4
351 I.I. V8, 5 sp O/D, Lock out hubs, Drives
like a Dream. Works like a truck



HEAVY DUTY 3/4 TON 93 FORD F250 4X4
7.3 Diesel AT, A/C, XLT Pkg., All options,
Very nice. Only 67,000 miles



2 WHEEL DRIVE CREW CAB
94 CHEVY 3500
Beautiful, Perfect 1 owner 30,000 miles, 350 I.I.
V8 AT - O/D, A/C, Pool - 4:10 gears Tow Pkg.



90 DODGE CLUB CAB 4X4
Nice & Clean, 70,000 Miles, 318 V8 - AT - A/C
\$12,900



MECHANIC'S SPECIAL
88 FORD F250 SUPER CAB 4X4
7.3 Diesel 5 sp A/C Good Body \$10,000



SUPER DUTY CHASSIS 96 FORD
Powerstroke Turbo Diesel, Auto, Long 161
W.B., Dual tanks, only 8,000 Miles
Heavy 15,000 GVW



DEISEL 1 TON 4X4'S
FORD F350'S
Powerstroke Turbo Diesel, 5 Available, Auto
& 5 sp, Call for Details



WORKHORSE 4X4 94 DODGE 3500 DUALY
Ready to pull the Big Load. Cummins Turbo
Diesel Power Auto A/C



LONG CHASSIS CAB
88 CHEVY C-30
Long 161 W.B., Strong 454, V8 - 4 sp, A/C



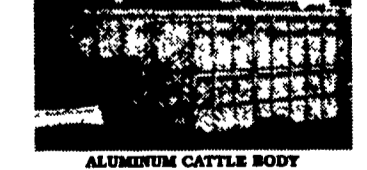
4X4 DIESEL SUPER CAB 95 FORD H.D. F250
Powerstroke Turbo Diesel, AT, A/C, Captain
Chairs, Aluminum Wheels, Swing Out, Mirrors,
33,000 miles



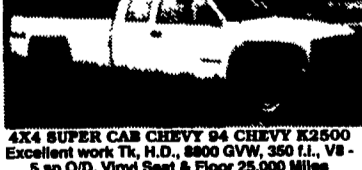
4X4 CLUB CABS
95 DODGE 2500 SLT LARAMIE
Cummins Turbo Diesel, Auto, A/C,
Tow Pkg., Very Nice.



96 CHEVY K2500 4x4
3/4 Ton, 360 V8, Auto, A/C, Excellent Body &
Paint \$10,900



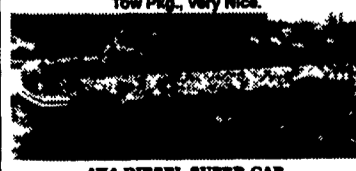
ALUMINUM CATTLE BODY
Eby Quality \$3,500



4X4 SUPER CAB CHEVY 94 CHEVY K2500
Excellent work Tk, H.D., 8800 GVW, 350 I.I., V8 -
5 sp O/D, Vinyl Seat & Floor 25,000 Miles
\$18,900



4X4 CHASSIS 96 FORD F350
Powerstroke Turbo Diesel 5 sp O/D A/C Limited
Slip, 4:10 gear, 23, 000 Miles



4X4 DIESEL SUPER CAB
90 FORD F250 XLT
A Nice One. Only 65,000 original miles, 7.3
Diesel, Auto, A/C, Drive It



4X4 CREW CAB DUALY
88 FORD F350 XLT
The nicest anywhere. 50,000 Original Miles, V8,
Auto, A/C, Alloy Wheels, Tow Pkg. It's Perfect.



460 SUPER CAB
94 FORD F250 4X4
One Strong Machine fuel inj 460 - AT - A/C Limited
slip 4:10 gear 31,000 clean miles



5 SP POWERSTROKES 4 WHEEL DRIVE
94 Ford F350 - 94 Ford F250
Call for Details



4 WHEEL DRIVE
96 CHEVY K3500
4 Door Dually, 6.5 Turbo Diesel, AT, A/C,
All Options, New Tk Warranty.



CUMMINS TURBO DIESEL 95 DODGE 2500
4x4 A Nice One, 40,000 Miles, Auto, A/C,
Excellent Fuel Mileage, Very Strong Truck



4X4 SUPER CAB DUALY
96 CHEVY K2500
Perfect. 20,000 Pampered miles 6.5 Turbo Diesel,
AT, A/C, Silverado, All Options, Chrome Wheels.



4X4 CLUB CAB DUALY
96 DODGE SLT LARAMIE
Hard to find - good to own Cummins turbo Diesel,
AT, A/C, 35,000 miles



4X4 STAKE BODY 87 CHEVY
Very Nice, 46,100 miles 360 V8 - 4 sp - A/C 12 ft
Body Removable Stron



FOR THE WORKING MAN
95 FORD F350 XL
4 Wheel Drive, Powerstroke Turbo Diesel, H.D. 5 sp,
Vinyl Seat & Floor 30,000 Miles