

35 TRUCKS & TRAILERS

'76 Clark tanker trailer, (8bin), in working order, \$6900. Montour Co. (717)437-2212

'76 Kenworth W900 for parts, 1693 CAT, 425HP, 13spd, polished alum. tanks. (302)674-8761

'77 Plymouth Voyager Maxi Van, runs good, 360 engine, \$500 obo. (717)626-1824

'78 Int. 18' grain dump, 400bu, good condition, \$7500 OBO. 717/367-0430.

'79 Ford F7000, 14' flatbed dump, CAT Diesel, 5+2 trans, \$8,000. (410)557-8100.

'79 White Roadboss, recent 350 cummins engine, engine brake, 9spd Road Ranger trans, 14' steel dump box, new clutch, new bushing and walking beams, extra tires and rims, Lowboy package w/ air brakes, owner operator truck, ready to work. \$16,500. (717)754-3009

'86 Dodge Royale SE B150 short whl base, 5 pass., 318 auto, PS, PB, air, AM-FM cassette, good condition, \$3,400 717-733-2873

'86 Fontaine flat, 43', 24.5 Budds, fixed tandem, excellent condition, \$4800 OBO. 717-665-4478

'87 Bobcat trailer, walking floor, 42' rollover tarp, GC (717)789-4243

87 Nissan 4x4, 5spd, Ext cab, PST, 127K, \$2850 717/974-4216

'88 F250, 107,000 miles, good condition, 5-spd., \$8000 OBO. 717/423-5774 after 6pm.

'89 Chevy Silverado 1500 Suburban, 350 FI, auto, PS, PB, PW, PDL, cruise, tilt, air, AM-FM cassette, 63,000 one owner miles, new radials, excellent condition, \$10,900. 717-733-2873

'89 Ford F150 4x4, 302 EFI, 5 spd, PS, PB, air, AM-FM cassette, lock-out hubs, 43,000 original one owner miles, like new, charcoal/silver, \$10,500 717-733-2873

'91 Chevy S10 Blazer 4x4 Tahoe, 4.3 V6, loaded incl phone, 1-owner, excellent condition, \$9450 Lanc Co 717/872-0755

'91 Ford XLT Lariat F150, 302 EFI, auto, PS, PB, air, AM-FM, 44,000 original miles, blue & white w/cap, like new, \$10,500. 717-733-2873

'92 Chevy 1500 Cheyenne, 1/2 ton, 4.3 V6, auto, PS, PB, AM-FM, 64,000 one owner miles, new radials, red, excellent condition, \$7,950. 717-733-2873

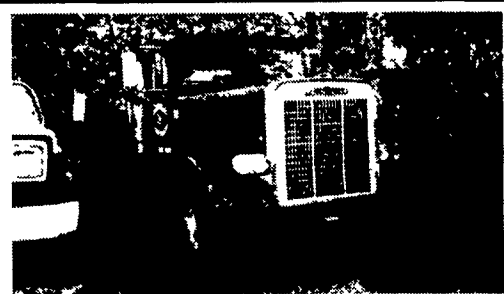
'92 Chevy Scottsdale 2500 HD, 3/4 ton, 2WD, 6.5 turbo diesel, auto, PS, PB, air, AM-FM, 8,600 GVW, 410 ratio, limited slip diff., towing package, 60,000 miles, excellent condition, \$11,995 717-733-2873

'93 Dodge 350, dual whl., cab & chassis, 360 Magnum, auto, PS, PB, AM-FM, 10,500 GVW, new radials, 32,000 miles, blue, excellent condition, \$11,500 717-733-2873

'93 Ford XL HD F150, 300 EFI, 5 spd, PS, PB, AM-FM cassette, dual tanks, 6,250 GVW, black, 26,000 original miles, excellent condition, \$8,975 717-733-2873

'94 Chevy diesel turbo, 5-spd, 12,000 GVW, w/ custom back pack alum. tool box, phone and 9' alum dump bed. 9' 6-way Boss snow plow. Excellent condition, \$24,900. Lanc. Co. 717/872-0755.

'94 Dodge Dakota Sport, 2WD, extended cab, 3.8 magnum, V6, 5 spd, PS, PB, air, AM-FM cassette, aluminum whls., dark green, excellent condition, \$9,900 717-733-2873



1982 FREIGHTLINER-FLD12064 - Cummins 400 H.P., 10 Speed Trans, Reyco Spring Suspension, Conventional - Non Sleeper, 10x20, 38,000 lbs Rears, With Wetline

\$4,990

Call Ray 609-424-6300

New J J N Hyd Tandem Tilt

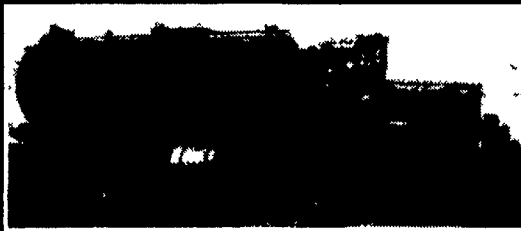


Extra Wide Electric brakes, break-a-way kit, lights, jack, etc.

20', 12,000 lb. GVW, 16" 8-ply tires....\$2,900

Other Sizes, Styles & GVW's Available

717-764-8301



6x6 Oshkosh 4000 gallon tank, 350 hydraulic drive pump, 8" load, 6" unload valves, 15x22.5 dual rear rubber 18x22.5 steering, 285 hp Mack engine.

\$29,500

717-464-5131

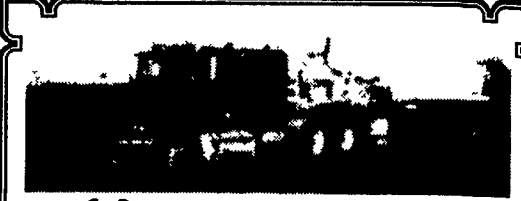


1990 Western Star

26' chassis, 56,000 GVWR, only 133,000 miles, 1-owner, 300 Cat, 8 speed lo-lo double rail, Will shorten, new PA inspection

\$29,900

717-859-3168



(2) 1987 Freightliners

• 1-510,000 miles, rebuilt motor, wetline, new clutch, \$16,500

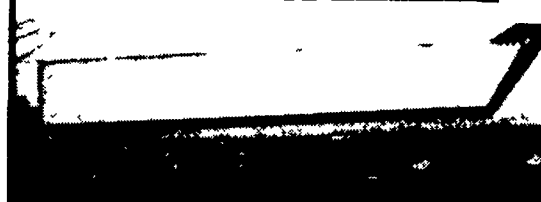
• 1-476,000 miles, new brakes, tires, wet line, \$13,500

1977 Presvac Vacuum trl., 5500 gal. \$12,500

7,000 gal. skin trailer, \$4,000

(610) 323-4721

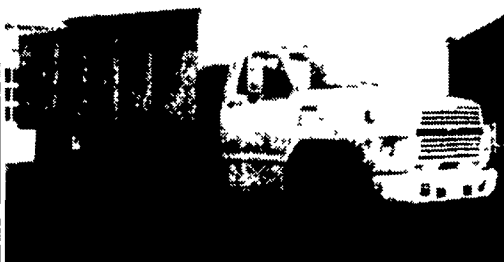
FOR SALE



1993 Trans 45' Walking Floor Trailer Air Ride; Aluminum Wheels; 11'3" side height; Good Condition

(717) 664-2894

FOR SALE



1990 FORD F-700 GRAIN TRUCK
Gas, 32,000 miles, 12 ft. Alum. Bed, 1000x20 Tires, One owner, mint condition
Umbergers of Fontana
717-867-5161 or 800-261-2106

CASH FOR USED DIESEL TRUCKS

- WE NEED 1/2 TON TO ONE TON:
- FORD DIESELS
 - SUPERCABS
 - CREW CABS
 - DODGE CUMMINGS
 - 2WD or 4x4
 - DUALIES
 - DUMPS
 - UTILITY BODY
 - FLAT BEDS
 - CAB & CHASSIS
 - SUPER DUTIES

LOW MILEAGE ONLY PLEASE

Before you sell or trade your diesel in somewhere else for LESS, CALL US!

We Pay More for Used Diesel Trucks Than Anyone.

717-949-2000 TRY US!

610-678-3243

Ask for Smokey or Kay **KELLER BROS.** RD 7, Box 405 Lebanon, PA 17042



1990 Chevy - 9600 GVW - 350 Auto - 8 ft. STB Thermo King Ref. Body - Ex. Condition



1975 IH - V-8 Cat Diesel - 5+2 - 30,000 GVW - A/B - P/S - with or without 20 ft body - 138" C to A - \$3,200



1984 IH 1954 - DT 466 - 210 HP - 5+2 spd - 28,000 GVW - New 11-22.5 tires - with or without 24 ft body - Very Clean



16 ft and 18 ft Reefer Bodies - Also Storage Bodies, Trailers and Lift Gates

Martin's Used Trucks & Equipment Inc.

560 Lampeter Rd. Lancaster, Pennsylvania 17602 (717) 299-6200 (717) 392-6266

PRE-OWNED CARS	PRE-OWNED TRUCKS	PRE-OWNED MPV'S
'95 CHEVY CAVALIER Z-24 A/C, 5 Spd, AM/FM, Cassette	'95 CHEVY 2500 S/CAB Silverado, A/C, A/OD, AM/FM Cass	'95 CHEVY ASTRO CL A/C, A/OD, AM/FM
'96 FORD TAURUS GL SDN. A/C, A/OD, AM/FM Cassette	'94 CHEVY 1500 S/CAB 4X4 Flare, A/C, 5-Spd, AM/FM Cass	'94 CHEVY S-10 BLAZER TAHOE A/C, A/OD, AM/FM Cassette
'96 FORD THUNDERBIRD LX A/C, A/OD, AM/FM Cassette	'94 CHEVY 3500 DUMP 5-Speed	'93 DODGE GRAND CARAVAN A/C, A/OD, AM/FM Cassette
'94 FORD ESCORT LX Wagon, 5-Speed, AM/FM	'96 FORD F-150, 4X4 S/CAB XLT, A/C, A/OD, AM/FM Cass	'95 FORD WINDSTAR GL A/C, A/OD, AM/FM Cassette
'93 FORD MUSTANG LX, A/C	'95 FORD F-150 4X4 S/CAB Eddie Bauer, A/C, A/OD, AM/FM Cass	'95 FORD EXPLORER SPORT A/C, A/OD, AM/FM Cassette
'96 LINCOLN CONTINENTAL A/OD, AM/FM Cassette, Loaded	'95 FORD RANGER XLT 4x4 A/C, 5 Spd, AM/FM Cassette	'95 FORD E350 15-PASS. C/W, 2-AC, A/OD
'94 LINCOLN MARK VIII A/C, A/OD, AM/FM Cass., Luxury Car!	'94 FORD RANGER S/CAB Spalsh, 4x4, A/C, 5-Spd, AM/FM Cass	'94 FORD AEROSTAR EXT. AWD, 2-AC, A/OD, AM/FM Cass
'94 MERCURY GR. MARQUIS LS Sdn, A/C, A/OD, AM/FM, Cass., Leather Interior	'93 FORD RANGER 4X4 S/CAB XLT, A/C, 5-Spd, AM/FM Cassette	'95 JEEP WRANGLER Rio Grande, 5-Speed
'94 SATURN SL-2 A/C, 5-Speed, AM/FM	'92 FORD F-250 HD A/C, A/OD, AM/FM Cassette	'94 JEEP GR. CHEROKEE Laredo, A/C, V-8 Auto, AM/FM Cass
'93 TOYOTA CAMRY LE A/C, A/OD, AM/FM Cassette	'91 FORD F-150 XLT A/C, 5 Speed	'93 JEEP CHEROKEE A/C, Auto, AM/FM Cassette

ENGLE-RISSINGER AUTO GROUP

Midway Between Halifax And Millersburg • 717-896-3421 • 1-800-242-8075

HOURS: Monday-Friday 8:30 AM - 8:30 PM; Saturday 8:30 AM - 3:00 PM

ALL STEEL REPLACEMENT TRUCK BED

7'X70"W or 80"W
8 1/2' Lx80"W or 90"W
10'Lx8"W, 12'Lx8"W

\$750.00

80" Car Dollie

HIGHWAY HYDRAULIC DUMP

5'x8', 3000# \$2,095
6'x10', 7,000# \$3,195
6'x10', 10,000# \$3,495
7'x12', 10,000# \$3,995

Also Available In 4'x7' and 4'x8'

5'x8' Starting at \$650
5'x10' Starting at \$695

UTILITY (TILT OR GATE MODEL) SIZES:
5'x8', 5'x10' 2000# GVW - 5'x10'
6'5" x12', 3000# GVW

REDUCED

LOW PROFILE DUMP TRAILERS

6'x10' GVW low profile dump trailers w/ landscape gate
7,000# \$3,495
10,000# \$3,895

Starting At \$3795 w/4' Adj. Tall

WIDER

UTILITY WITH GATE-SIZES:
16'x77", 18'x77", 7,000# GVW,
20'x81" 12,000# GVW

Over 300 Trailers In Stock Starting At \$475.00 T-Plates DEALERS WANTED

GOOSENECK SIZES: 20'x8' 12,000# or 14,000# GVW, 24'x8' 14,000# GVW

Low Profile construction 16'x77" & 18'x77" 10,000 # GVW

WIDER

CAR HAULER TRAILER:
16'x78" & 18'x78" Includes 5' Beavertail 7,000 lb. GVW 4' self storing ramps

DECK-OVER CONSTRUCTION 20'x8' w/Tail 10,000# GVW \$3,195