

1988 IH 1854, 22' C&C, 32,800 GVW, air brakes, 5-speed, fresh Overhaul, \$12,900. 717-859-3168.

1989 Chevy K1500 Silverado pickup 4x4, 350 engine, automatic, new trans & tires, 90,000 miles, VG condition, \$10,500 OBO. 717/626-2102.

1989 F150 4x4, LX, 302, V8, auto, bedliner, PS, PB, grey, high mileage, current inspection, \$5995. 717-867-1201.

1989 GMC Topkick, dependable, good condition, runs well, \$15,000 OBO. 610/967-2181.

1990 F250 XLT Super Cab, 69K miles, excellent condition, \$11,500. 302/698-9507 after 8pm.

1990 Ford Bronco, Eddie Bauer edition, V-8, automatic, excellent condition, \$6,500. (610)932-5270.

1990 Ford F450 1 1/2 ton diesel cab & chassis, (excellent mechanical condition), 12,000 original miles, 1 owner, 7.3 diesel, 5 spd trans, PTO & hyd pump, \$10,850. (215)257-3616.

1990 IH F4900, 24' C&C, 52,000 GVW, 7-speed, DT466, 126,000 miles, new paint, tires, double rail, \$22,900. 717-859-3168

1991 Ford F-250 4X2 pickup w/snow plow, engine, 351 V-8, auto. trans., good cond. (717)755-2911

1991 Mack truck cap and chassis, long wheel base, double frame. 215/968-5660.

1995 Chevy Ext. cab, V8, 5-speed, AC, 4x4, 19000 miles, Emerald Green custom paint. 814-848-9753

1995 Dorsey flatbed, 48x102, \$13,000. 1991 Trailmobile flatbed, 48x96, \$8,750. 1988 Laurel 48x96, drop deck \$4,000. 1989 Chevy C-60 hot shot w/48x96 flatbed trailer \$8,000. Call (717) 248-3873 (717)242-3331.

1983 Ford C8000, cab, chassis, 50,000 GVW, 210hp, Cat engine w/ Allison trans, PTO, \$6500 OBO. 717-927-9172.

1984 Ford F350 1 ton dump truck, V8 gas, 4 spd. trans. Snow plow frame, \$2,400, runs good, bed rusted. (215)257-3616.

1993 28' Hillsboro Gooseneck flatbed trailer, dovetail, 23,000 GVW, 5th wheel or ball hookup, \$5500 OBO; also plate w/ ball, rear hitch, spare tire & fuel tank for Super Duty Ford. 610/444-1651.

1984 Chevy K-2500 4X4 Extra Cab, 350/V8, 8' Box, AT, PS, PB, AC, PW, PDL, Cruise, Tilt, 33,000 Miles, Tail and Silver, Silverado Package. Schuylkill County. \$21,500. (717)739-2373.

1994 Kenworth W-900L, 425 CAT, 15 spd, new tires, 200,000 mi., very clean loaded truck, 60" bunk, \$57,500; 1988 Ti-brook dump trailer, frameless, 38", air ride suspension, alum. buds, coal chute, swing gate, \$18,900; 1990 w/same specs. \$22,900 (609)698-7721

1991 Mitsubishi turbo F-H, 17,000 GVW, 16' flat dump Hostettler bed, 91,000 mi, \$15,000. Call (814)793-4908

1995 Ford F250 XLT, 4x4, power stroke, diesel, extended cab, aluminum wheels, keyless entry, sun visor. 215-572-7700

1A lots, perk and surveyed in Junita Co., Licking Creek Valley. 717/436-2774 or 436-6890.

24' metal gooseneck stock trailer. New floor, wiring, brakes, paint. (301)384-4646.

28' Gooseneck stock trailer w/side ramp, extra heavy floor mats, \$2400. 410/692-5600.

(2) Aluminum dump Bodyier, (1)-16', (1)-17' high sides, \$3500/ea. Reefer box 20' diesel unit, good condition, \$2000. 610-944-9871 after 6PM.

40' Aluminum Raven flatbed, \$3500. 717-532-9271 evenings. Cumberland Co.

45' van trailers, \$2,750. 28' van trailer, \$1,750. (800)220-6082.


46' City spread axle flatbed w/side kit, \$6,500. 1970 IH single axle tractor w/ wetline, 549-10 speed RR, good condition, \$1,200. Rockwell 411 air ride axle, 20" Dayton wheels \$800. (717)272-9595.

48' Great Dane flatbed trailer, ex cond, \$5500. (717)527-2753

(4) Horse gooseneck trailer with tackroom. This senior citizen in fabulous condition. Ready to haul! \$2500. 610-847-8133.



4WD Stallion, 3208 Cat Turbo like new, MT654CR Allison Automatic, 3400 gallon tank, 350 C.F.M. vacuum-pressure pump, top or bottom-load. Sunflower injectors, field ready. \$34,000 Lancaster Co., PA
717/486-2233




1987 Ford F-250 4x4, ext. cab, diesel, Auto, PS, PB Air, new inspection
\$7,995
Countryside Auto Sales
Manheim, Pa.
717-664-2170




89 Marmon
425 CAT, Jake, RTQ 1215, 10,000 Mi. on a Rebuilt Engine, New Clutch, 370 Eatons, New 24.5 Alum. Wheels, HA Ride, WB 230", Wetline, Locking 5th Wheel. **\$26,500**
(610) 869-8449

1986 International Cargo Star Twin Screw Diesel Truck - Allison Transmission With A 19' Aluminum Dump With Hyd. Tail Gate **Firm Price - \$25,500**
1977 Ford Truck Cab Over Twin Screw With A 3208 Cat. Turbo Diesel 250 H.P. - Allison Transmission Equiped With A 4000 Gallon Manure Tank **Sale Price \$15,500**
1985 Mack Truck M.S. 300 Model - Single Axle 6 Speed Trans - 215 H.P. Rebuilt Engine Diesel w/Turbo, 35000 Lb G.V.W. Equipped With 17' Hewey Steel Dump With Hyd. Tail Gate, 16 Ton Omaha Hoist - 51" Sides With 12" Extension **Sale Price \$18,500**
717/866-6441



1987 Ford F-150 with cap V8 Auto, PS PB low miles. 1 owner
\$4,250
Call **717-865-3488** after 5 p.m.

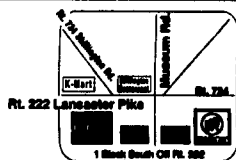


1994 Suburban, 3/4 ton 4x4, turbo diesel, loaded, 50,000 mi, like new cond. \$24,500/OBO 410/557-9559 No Calls After 9:00 p.m.

610-777-1300 or 1-800-397-4041

100 South Museum Road Shillington, Berks Co., PA

DAN PHELPS
BUICK - GMC TRUCKS, INC.



96 Chevy 3/4 Ton 4x4
Cap, Auto, Air, Plow, Only 9700 MI
Stk #97101A \$22,995



95 Dodge 1 Ton 4x4 Ext. Cab Auto,
Turbo Diesel, Dual Rear Wheels, All The
Options, Only 12,000 Miles
Stk #7668A \$29,995



New 97 GMC 3/4 Ton Utility 350 V8,
Auto, Air, 8' Reading Utility Body
Stk #7485 Sale \$20,988



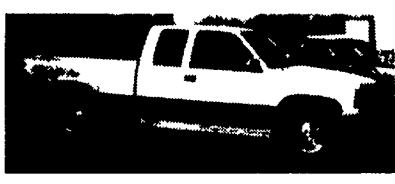
95 Ford Bronco XLT All Pwr. Eq. CD
Player, Sport Pkg., Security Sys., Sharp
Stk #7639A \$19,995



95 Jeep Grand Cherokee
Auto, P/W, PL, Air, Cruise, Tape, Nice
Stk #8751A \$20,995



91 Chev 1/2 Ton
V6, 5-Spd, AM/FM Cass., 50,000 Miles,
Great Shape #7692A \$10,995



94 GMC 1/2 Ton 4x4 Ext. Cab
Shortbed, P/W, P/L, Air, SLE Pkg., Very
Clean Stk. #7402A \$19,995



96 Chev. 1-Ton Dually 4x4
Trailer Hitch, 350 V8, AC, Cruise, Meyer
Plow, Bedliner, Only 8,200 Miles, #7717
\$21,995



94 GMC Safari Cargo Van
Auto, Air, 7 to Choose From Stk. #6239A
Starting At \$8,995



93 Chevy 3/4 Ton 4x4 Suburban
All the Seats 454 V8, Ex. Cond. Stk. #7644A
\$22,995



93 Chevy Beauville
15 Pass Van, Air, Only 26,000 MI.
Stk. #6499A \$17,995



New 95 GMC 1/2 Ton Shortbed
V6, 5 Spd., Air, Full Factory Warranty
Stk. #6990 \$14,288



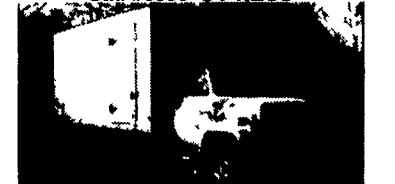
92 Chevy C-10 Ext. Cab
Auto, Air, V6, Cap, Only 47K
Stk. #7136A \$13,995



92 Chevy Walk-In
16 Ft. Aluminum Body, Excellent Condition
Stk. #7008A \$12,995



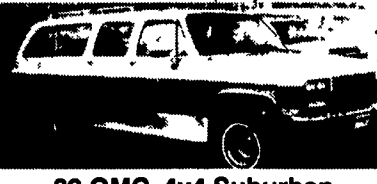
91 GMC Topkick Cab & Chassis
26,000 GVW, Suitable For 16' Box, 366 V8,
5 Spd., Stk. #7458A \$11,995



90 GMC C6 Van 16' Morgan Reefer
Body (No Unit), 25080 GVW 8.2 Diesel,
5 Spd. Stk. #7629A \$7,875



90 GMC 1/2 Ton 4x4
P/W, P/L, Air, 350, Sharp, Clean
Stock #7636A \$12,995



89 GMC 4x4 Suburban
9 Pass., Tri. Pkg, Great Shape, Only 65K
Stk. #7635A \$12,995



89 International 16 ft. Reefer Truck
DTA 360 Engine, 5-Spd. Trans., 2-Spd. Rear,
28,000 GVW, #7601A \$12,900



77 International Dump
27,500 GVW, 404 V8, 5 Spd, Only 23,000 MI.
Runs Great, Stk. #7091A \$5,995