



Indiana Hogs

SPRINGFIELD, IL
MARCH 6, 1997
 Barrows and Gilts: Mostly 1.00 Lower. Demand light on a moderate movement. Country Plants US 1-2 230-260 lbs. 46.50-48.00 Few 48.50 47.50-49.25 US 2-3 230-260 lbs. 41.00-46.50 210-230 lbs. 36.00-41.00
 Sows: Weak to 1.00 Lower. US 1-3 300-450 lbs. 39.00-43.00 450-500 lbs. 42.00-45.00 500-650 lbs. 45.00-49.00
 Boars: 37.00-38.50
 Preliminary estimate: 34,000 * Receipts have changed due to change in reporting base.



HAY & GRAIN MARKETS

New Holland Feeder Pigs

New Holland, PA
 Wed., March 5, 1997
 Report Supplied by USDA
TODAY 575 HEAD
LAST WEDNESDAY 383
LAST YEAR 319 HEAD
 TREND: COMPARED TO LAST WED., FEEDER PIGS 10.00-15.00 HIGHER. SUPPLY INCLUDED AROUND 35 PERCENT SOLD AS IS. ALL PIGS WEIGHED ON ARRIVAL AND SOLD BY THE HUNDRED WEIGHT.
 US#1-2: 6 HEAD 16 LBS. 180.00; 46 HEAD 23-27 LBS. 140.00-175.00, WEIGHTED AVERAGE 25.76, WEIGHTED PRICE 155.76; 15 HEAD 31-35 LBS. 150.00-162.00, WEIGHTED AVERAGE 32.67, WEIGHTED PRICE 156.00; 71 HEAD 40-49 LBS. 110.00-145.00, WEIGHTED AVERAGE 44.30, WEIGHTED PRICE 132.07; 40 HEAD 51-54 LBS. 115.00-132.00, WEIGHTED AVERAGE 53.00, WEIGHTED PRICE 123.83.
 SLAUGHTER: 29 HEAD 18-19 LBS. 162.00-165.00, WEIGHTED AVERAGE 18.10, WEIGHTED PRICE 163.17; 30 HEAD 23-28 LBS. 115.00-165.00, WEIGHTED AVERAGE 26.17, WEIGHTED PRICE 135.54; 69 HEAD 32-38 LBS. 135.00-168.00, WEIGHTED AVERAGE 34.93, WEIGHTED PRICE 161.34.
 AS IS: 30 HEAD 19-22 LBS. 130.00-140.00, WEIGHTED AVERAGE 19.45, WEIGHTED PRICE 134.88; 28 HEAD 17 LBS. 85.00; 109 HEAD 17-65 LBS. 30.00-55.00, WEIGHTED AVERAGE 33.90, WEIGHTED PRICE 39.81.
 ALL PIGS CONSIGNED TO WED. FEEDER PIG SALE MUST ORIGINATE FROM A QUALIFIED NEGATIVE OR MONITORED HERD.

Hatfield Direct

Hatfield, Pa.
 Reports Supplied by Packer
 For Monday, March 3, 1997
 And Wednesday, March 5, 1997
MONDAY: 7073
LAST MONDAY 6623
TREND: COMPARED TO LAST MONDAY .50 HIGHER.
 55.5%-56.4% 216-269 LBS. BASE 51.17.
 56.5%-58.4% 216-269 LBS. 51.94-52.70.
 58.5%-60.4% 216-269 LBS. 53.46-54.22.
 FEW 216-269 LBS. 54.99.
GOOD'S RECEIVING
MONDAY CASH: 50.75.

WEDNESDAY

TOTAL HOGS: 7147
LAST WEEK: 6631
TREND: COMPARED TO LAST WEDNESDAY: .91 LOWER.
 55.5%-56.4% 216-269 LBS.: BASE: 51.17.
 56.5%-58.4% 216-269 LBS.: 51.94-52.70.
 58.5%-60.4% 216-269 LBS.: 53.46-54.22.
 FEW 216-269 LBS.: 54.99.

Lancaster Hogs

Lancaster Stockyards
 Wednesday, March 5, 1997
 Report supplied by USDA
HOG MARKET TODAY 489 HEAD;
LAST WEDNESDAY 903; LAST YEAR 978.
BARROWS AND GILTS .50-1.00 LOWER. US#1-2 220-260 LBS. 50.50-51.00; US#1-3 220-270 LBS. 49.50-50.50.
SOWS AND BOARS NOT TESTED.

New Holland Hogs

NEW HOLLAND, PA
MARCH 3, 1997
TODAY 825
LAST MONDAY 919
LAST YEAR 1072
 TREND: Compared to last Monday barrow and gilts 3.00-4.00 higher.
BARROWS AND GILTS: US 1-2 235-265 lbs 52.00-52.60 US 1 230-275 lbs 53.00-54.50 US 1-3 220-270 lbs 50.25-51.50 us 2-3 220-280 lbs 48.00-50.00 295-320 lbs 47.75-48.50

Middleburg Hog Report

Middleburg, Pa.
 March 3 and 4
 Report supplied by PDA
243 HEAD. BARROWS AND GILTS US1-2 240-260 LBS. 49.00-51.00, 220-235 LBS. 48.00-49.00. SOWS US#1-3 300-400 LBS. 38.00-50.00, 400-500 LBS. 40.00-45.00, OVER 500 LBS. 45.50-48.00; BOARS 200-650 LBS. 35.00-40.50.

Middleburg Hay

Middleburg, PA
 Tues., March 4, 1997
 Report supplied by PDA
81 LOADS TOTAL, 56 LOADS OF HAY.
ALFALFA: 77.50-170.00.
MIXED HAY: 67.50-160.00.
TIMOTHY: 75.00-105.00.
CLOVER HAY: 67.50.
TIMOTHY SEED: 22.50 BU.
SHELLED CORN: 2.75 BU.
STRAW: 11 LOTS, 77.50-125.00.
EAR CORN: 8 LOTS, 75.00-87.50.
BARLEY: 3.25.
OATS: 6 LOTS, 2.30-2.50 BU.

Kirkwood Hay Auction

Kirkwood, Pa.
 Tuesday, March 4, 1997
 Report Supplied by Auction
59 LOADS OF HAY.
MIXED HAY: 1ST CUTTING 117.00-164.00, 2ND CUTTING 130.00-131.00.
TIMOTHY: 75.00-155.00.
ALFALFA: 1ST CUTTING 136.00-175.00, 2ND 160.00-165.00, 3RD 130.00-195.00, 4TH 137.00-159.00.
CLOVER: 74.00-133.00.
NEW SEEDING: 147.00-175.00.
HAY, ROUND BALES: 18.00-31.00 EACH.
GRASS: 85.00-160.00.
WHEAT STRAW: 89.00-115.00.
BARLEY STRAW: 90.00-100.00.
CORN: 3.15 BU.
STARTING TIME 11 A.M.

Good's Hay

Leola, Pa.
 Wed., March 5, 1997
 Report Supplied by Auction
TOTAL LOADS: 111.
ALFALFA: 62.00-212.00.
STRAW: 76.00-128.00.
TIMOTHY: 65.00-155.00.
CORN: 85.00-100.00.
GRASS: 87.00-155.00.
MIXED HAY: 60.00-202.00.
OATS: 2.95 BU.
ALFALFA STUBBLES: 89.00.
ROUND BALES 42.00-52.00 EACH.

Green Dragon Hay

Ephrata, Pa.
 Friday, February 28, 1997
 Report Supplied by Auction
130 TOTAL LOADS.
MIXED HAY: 48 LOTS, 80.00-175.00.
ALFALFA: 18 LOTS, 86.00-195.00.
TIMOTHY: 12 LOTS, 75.00-135.00.
STRAW: 25 LOTS, 70.00-115.00.
EAR CORN: 9 LOTS, 93.00-100.00.
ORCHARDGRASS: 9 LOTS, 50.00-122.00.
OATS: 5 LOTS, 2.45-3.00 BU.

The Windmill

Penn Yan, N.Y.
 Friday, Feb. 28, 1997
 Report Supplied by Auction
20 LOADS.
MIXED GRASS: 1ST CUTTING 65.00-88.00, 2ND CUTTING 120.00.
ALFALFA/TIMOTHY: 1ST CUTTING 40.00-115.00, 2ND CUTTING 104.00-145.00.
ALFALFA: 1ST CUTTING 83.00-95.00, 3RD 115.00-125.00.
STRAW: 96.00-109.00.
OATS: 2.80 BU.
TIMOTHY SEED: 29.00 50 LBS.
CLOVER SEED: 60.00 50 LBS.
AUCTION THURS., MARCH 27 REPLACES MARCH 28 GOOD FRIDAY.

Regional Hay

March 3, 1997
 Eastern Pa.
HAY & STRAW MARKET FOR EASTERN PA - (ALL HAY NO. 2 AND BETTER. PRICES PAID BY DEALERS AT THE FARM & PER TON.) HAY AND STRAW STEADY TO 10.00 LOWER.
ALFALFA 100.00-140.00 FEW REPORTED 170.00; MIXED HAY 90.00-140.00 FEW REPORTED 150.00; TIMOTHY 90.00-140.00; STRAW 70.00-90.00 FEW REPORTED 100.00; MULCH 25.00-40.00.
SUMMARY OF LANCASTER CO. HAY AUCTIONS FOR WEEK ENDING 02/28/97. PRICES PER TON: LOADS: 356 HAY, 88 STRAW & 28 EAR CORN. ALFALFA 95.00-195.00; MIXED HAY 75.00-195.00; TIMOTHY 75.00-160.00; STRAW 72.00-140.00; EAR CORN 85.00-102.00.

SUMMARY OF CENTRAL PA HAY AUCTIONS FOR WEEK ENDING 02/28/97. PRICES PER TON: LOADS: 332 HAY, 50 STRAW & 34 EAR CORN. ALFALFA 75.00-158.00; MIXED HAY 72.50-150.00; TIMOTHY 75.00-148.00; STRAW 55.00-100.00; EAR CORN 65.00-95.00.

Diffenbach Auction Center

New Holland, Pa.
 Monday, March 3, 1997
 Report Supplied by Auction
TOTAL LOADS: 157.
ALFALFA: 92.00-225.00.
MIXED HAY: 75.00-225.00.
TIMOTHY: 85.00-175.00.
ORCHARDGRASS: 77.00-155.00.
STRAW: 45.00-110.00.
EAR CORN: 93.00-100.00.
FIREWOOD: 60.00 LOAD.

Vintage Hay

Paradise, PA
 Thurs., March 6, 1997
 Report Supplied by Auction
ALFALFA: 128.00-152.00.
TIMOTHY: 132.00.
MIXED HAY: 115.00-135.00.
GRASS: 97.00-110.00.
STRAW: 97.00-98.00.
12 LOADS TOTAL.

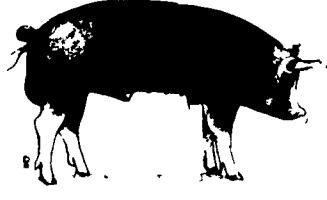
Greencastle Livestock Market

Feb. 7 and March 3
 Hay & Straw
 Report Supplied by Auction
34 LOADS.
ALFALFA: 105.00-160.00.
TIMOTHY HAY: 59.00-95.00.
MIXED HAY: 70.00-135.00.
BROME GRASS: 70.00-90.00.
MULCH HAY: 40.00-60.00.
STRAW: 60.00-70.00.
FIREWOOD: 45.00 LOAD.

WRAPPING SILAGE BALES & DRY BALES
 Buy Direct From Distributor
 Shipped Nationwide Quantity Discounts Available. Dealerships Available #1 Tested Quality
BALEGARD®
 PRESTO STRETCH FILM
 3184 Oregon Pike
 Leola, PA 17648 (Lancaster County)
800-831-9919

PIGS
 STATE GRADED SALE
 RECEIVING 7-11 AM
FRIDAY
MAR 14 & 28
1:30 P.M.
 AT
Carlisle
 LIVESTOCK MARKET, INC.
 Exit 12 Off I-81 turn South
 (717) 249-4511 or
 Evenings Jim, 249-2359

FEEDER CATTLE
 Tues., March 11
 7:30 P.M.
 Bring a Load - Buy a Load
CARLISLE
 Livestock Market, Inc.
 Exit 12 off I-81 Turn South
 (717) 249-4511 or
 evenings, Jim
 (717) 249-2359



PENNFIELD GRAIN BANK
 Pennfield Offers A Sound Program For The Dairy Farmer To Use His Grain "Same As Cash" To Reduce His Monthly Feed Bill And To Avoid Having To Take "Harvest Price" For His Grain
 Prices Week Of 3/10/97
 Corn \$3.41 Bu.
 Soybeans \$8.18 Bu.
 Barley \$3.60 Bu.
 • No Storage Charges
 • Prices Updated Weekly
 • Grain Bank Balance Shown On Each Invoice
 • No Hidden Charges
 For every ton of qualifying dairy feed purchased you will receive one ton of grain back hauled at no charge
 CUSTOMER SERVICE DEPT
 OPEN 24 HOURS A DAY
 Call 1-800-732-0467
 pennfield feeds

Lancaster Farming
INDEX
 Five Sections
COLUMNS
 Now is the Time..... A10
 On Being A Farm Wife..... B 3
 Consuming Thoughts..... B 4
 All Garden's..... B 5
 Taking Time..... B 7
 Ida's Notebook..... B17
 4-H Happenings..... B19-21
 Young Farmer News..... C 6
 Poultry Pointers..... D 2
 FFA Happenings..... E 3
DEPARTMENTS
 Editorial..... A10
 Farm Calendar..... A10
 Farm Forum..... A10
 Futures..... A16
 Mailbox Markets..... B22
 Classified Ads..... C 7, D 8
 Business News..... D 6
 Sale Reports..... E 4
 Public Auction Register..... E10
HOME AND YOUTH
 Homestead Notes..... B 2
 Home On The Range..... B 6
 Cook's Question Corner..... B 8
 Kid's Korner..... B10
 You Ask, You Answer..... B14
FEATURES
 Tobacco Growers..... A19
 Pa. Custom Rates..... A29
 Acres Conference..... A35
 Poultry Assoc. Dinner..... B 1
 Goats Galore..... B10
 Wood Mizer..... B12
 Bread Baking..... B16
DAIRY
 DHIA Focus..... A28
 Top Pa. DHIA Herds..... C 4

HERE TODAY • HERE TO STAY
For Buying or Selling Livestock
Call Dunlaps at (717) 397-5136
Slaughter Cattle
 Every Monday 9:30 AM
Feeder Cattle
 March 21
 April 4 & 18
Receiving Market Hogs
 Wednesday 6:30 AM
Sheep & Goats Auction
 Mondays - 9:30 AM
Graded Sow & Boar Sales
 March 18, 1997
 April 1 & 15
 (1st & 3rd Tues. of month)
 Receiving 6:00 AM to Noon
SALE - 2:00 PM (INDIVIDUALS)
2:30 PM - Large Lots (TELE-AUCTION)
 Sows to be graded & weighed in 50 lb increments
PROBLEM SOWS SOLD SEPARATELY
Walter M. Dunlap and Sons
LANCASTER STOCKYARDS
 An Old Line Commission Firm Dedicated to
 Livestock Marketing for the 21st Century!