

**35 TRUCKS & TRAILERS**

1988 Chevy pickup, 2x4, step side, 6 new mounted tires, new brakes, battery, clutch, AM/FM cassette stereo, sunroof, bedliner, inspected 3/98, 146K, \$3900 OBO. 610-793-2194.

1988 Freightliner conventional w/sit-in bunk, excellent 350hp big cam Cummins w/Jake, 9-spd, 355 rears, 22.5 tires on Buds, aluminum fronts, PS. Must Sell. \$11,900. 717/538-2324.

1988 International tractor, model S1900 single screw, DT466 diesel, 5+2 speed, WB172", CA102", 170K miles, 63K miles on engine, asking \$9800. 610-377-2460.

1989 Dodge 1-ton 4WD, 4-spd, 360 engine, PTO driven winch, dump bed, 89,000 miles, \$8500. 717/536-3572.

1989 F150 4x4, LX, 302, V8, auto, bedliner, PS, PB, grey, high mileage, current inspection, \$5995. 717-867-1201.

1989 F250 Supercab 4x4, 7.3L diesel XLT Lariat, tow package, loaded, 110,000 miles, 8800 GVW, excellent condition, \$11995 firm 610-286-0003 anytime. Chester Co.

1989 Ford E-350 Clubwagon, 15 passenger, 7.3 diesel, 72,000 miles, dual tanks, dual air electric windows and locks, blue, \$7800 OBO. 410-575-7074 Edward Green

1989 GMC Topkick, dependable, good condition, runs well, \$15,000 OBO. 610/967-2181.

1989 Volvo/White WIA64TES, 425hp, 12.7L Series 60 engine w/Jake, Fuller RTX-14609B trans, 12,000 front axle, alum buds front, 11x24.5 tires, dual 125 gal. alum. tanks, Rockwell SQ100, 4.33 ratio, 38,000 rears, air ride, PS, AC. 1 owner, extra clean, very good condition, \$20,900. Call 717/393-6868 after 3pm or leave message.

1990 Ford F250 HD, 4x2, V8, 350, XLT, fully loaded, bedliner, new tires, 44,000 miles, excellent condition, \$10,600. 610-488-7060.

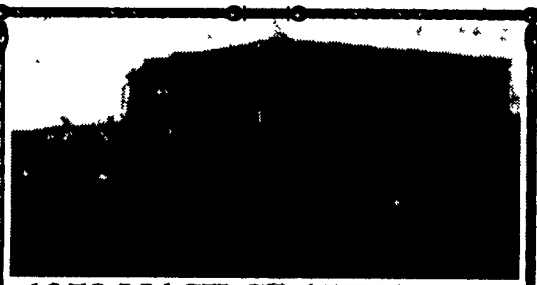
1990 Ford F450 Super duty, 7.3 diesel, automatic, 5th wheel setup, 98,000 miles, \$7,500. (717)868-6237.

1992 26' aluminum truck box w/clear roof \$2,500. 1987 Iveco 340 truck and frame \$2,000 OBO. (717)694-9091.

1992 Eager-Beaver, 20 ton new tires, good brakes, \$6,500. (215)348-1137.

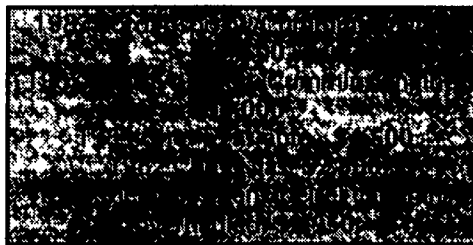
1992 Ford F350 4WD XLT dsl pickup, 5-spd, 65,000 miles, \$15,950 OBO. 717/945-5902.

1993 Dodge W250 club cab, Cummins dsl, 4x4, 5-spd, LE package, lots of extras, 80,000 miles, very good condition, \$18,500. 717/292-6620 before noon.



**1978 MACK GRAIN TRUCK**  
DIESEL 237 - 5 SPD TRANS, 20' SCOTT GRAIN BODY - 614BU 68,500 GVW, CURRENT INSPECTION  
CALL EVENINGS  
**610-323-2547**  
**\$16,000 OBO**

(4) 17' Large Capacity Aluminum Curbside Step Vans. Perfect for route sales & distributors or large maintenance van. Large amount of interior shelving already installed for display or storage.



**RFD AMERICA**  
496 Solanco Road, Quarryville, PA  
717/786-1304, 717/786-5127



**1981 Kenworth tractor 8V92, 13 speed, air ride, wet line, with Removeable 2 piece Flat bed 19 ft.**  
**\$15,000 nice set up.**  
**717-349-7737**



**77 MACK**  
3800 Gal. Vac Tank, 300 Mack Engine, 6 Sp. Trans., Double Frame, Heavy Rears, Engine, Transmission, Rears, and Vacuum Pump In Very Good Working Condition  
**Asking \$18,000**  
**610-286-7378**



**1989 IHC 19545 Model DT466 90,000 Rebuilt Eng., 5 Speed Trans., Single Speed Rear, Air Brakes, 32,000 GVW, Total Miles On Truck 194,000 Miles**  
**16' Morgan Cold Plate Refer Body, 220 Volts, 3 Phase Elec., Maintains 32° to 45°**  
**Phone 717-898-0683**  
CHARTER ENTERPRISES, LTD.  
270 HOSTETTER ROAD, MANHEIM, PA



**1991 Ford Super duty Dump w/Reading Rev-Pac tool boxes, very good condition, 65,000 miles**  
**\$15,000**  
**(610) 754-7760**  
after 6 p.m.



**International Truck with new Manure Spreader Tank, Front Motor Driven Hydraulics, Not PTO**  
**Curry Supply Co., Curryville, Pa.**  
**1-800-345-2829**  
Ask For Joe

**Used Truck Bodies**



Installed on NEW or Old Truck  
"Makes your Old Truck Look Like NEW!"  
• Dry Van Bodies 10' to 24' • Reefer Bodies  
• Flat Bodies  
(Completely Refurnished Bodies in Most Cases - Same Day Service!)  
**Phone 717-898-0683**  
CHARTER ENTERPRISES, LTD.  
270 HOSTETTER ROAD, MANHEIM, PA

**CASH FOR USED DIESEL TRUCKS**

WE NEED 1/2 TON TO ONE TON:  
• FORD DIESELS • DUALIES  
• SUPERCABS • DUMPS  
• CREW CABS • UTILITY BODY  
• DODGE CUMMINGS • FLAT BEDS  
• 2WD or 4x4 • CAB & CHASSIS  
• SUPER DUTIES

LOW MILEAGE ONLY PLEASE  
Before you sell or trade your diesel in somewhere else for LESS, CALL US!  
We Pay More for Used Diesel Trucks Than Anyone.  
**717-949-2000 TRY US!**  
or **610-678-3243** **KELLER BROS.** RD 7, Box 405 Lebanon, PA 17042  
Ask for Smokey or Kay

**R & R CAR AND TRUCK CENTER**  
1657 Rohrerstown Road, Lancaster, PA



**89 FORD LT 9000**  
NTC 300, 13 Spd, Engine Brake, P/S, A/C, Hand Spring Susp, 162" WB Very Clean, New Paint & Insp  
only **\$13,900**



**88 FORD F-700**  
14' Flatbed Dump, 370 V8 Gas, 5+2 23,100 GVW, Only 51,048  
**\$11,500**

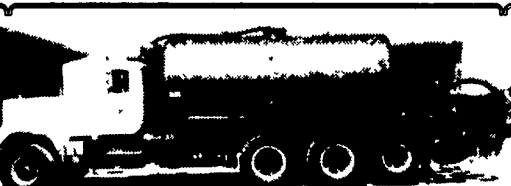


**1980 WHITE ROAD EXP. II**  
238 D D, 9 Spd, P/S, A/B Tandem Axle, D D Frame 22 C&C, Alum Wheels, Hand Susp, 48,000 GVW  
only **\$6,900**



**1980 GMC TOPKICK**  
3208 Cat, 582 Spd, P/S, Hyd Brakes, 30,200 GVW, 16" C&C New Insp & Paint  
**Reduced To \$5,900**

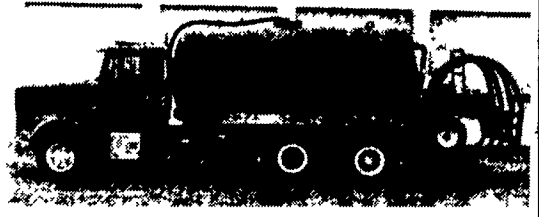
Call Ray Leed 717-560-4901



**1985 Mack, E9-450 Mack Engine, 12 sp. Mack trans. 58,000 lb. Mack rears. 18,000 lb. steering axle. Equipped with 4700 gal. pres./vac. tank, 8" load and unload valves, 350 CFM Walley Vac./press. pump powered with F3L-1011 Deutz, 4 shank Sunflower sub-soiler injector system.**  
**\$49,500**  
**Lanc. Co. Pa.**  
**717-733-8528**



**1975 GMC "Big Wheels" Tanker**  
4-53 Detroit, Allison auto, P.S. steel tank, front tires 48x2500-20 NHS, Back tires 66x4300-25 NHS. Air brakes 28,000 GVW  
We also have suction trailers and alum. tanker trailers!  
**(610) 269-1298**

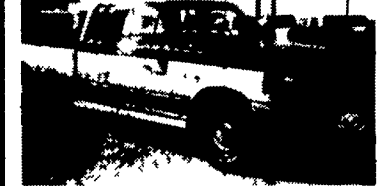


**1988 Freightliner 350 CAT 8LL Flotation Tires, 4500 Gal, 350 cfm vac pump**  
**1989 Mack 110 13 speed Flotation Tires, 4500 Gallon Tank, 350 cfm vac pump**  
**(717) 733-7226**



**16' WALINGA BED FOR SALE.**  
**\$17,500. MOUNTED ON YOUR CHASSIS. TWIN PTO'S NEEDED. FRAME WORK EXTRA.**  
**717/626-8191**

**USED TRUCKS**



'90 F-250 Super Cab 4x4 XLT Lariat, 7.3 Diesel, Auto W/O, PS, PB, PW, PDL, Cruise, Tilt Wheel, AM&FM Stereo Cass, Rear Sliding Window, Dual Tank, Two Tone Black & Silver, 4.10 Rear, 137,000 Miles, 1 Owner  
**\$10,900**



'96 GMC 2500 SLE Ext-Cab 4x4, 8600 GVW 350 Vortec, Auto W/O, 4 10 Limited Slip, PS, PB, PW, PDL, AC, Cruise, Tilt Wheel, AM&FM Stereo Cass, 9,800 Miles, Dr Blue & Silver  
**\$24,500**

**MARTIN'S AUTO SALES**  
1025 W. Main St., New Holland, PA 17557  
**(717) 656-6621**