

Central U.S.

Carlot

Beef Report

February 26, 1997

Report supplied by USDA

USDA NATIONAL CARLOT BEEF REPORT (INCLUDES MAJOR PRODUCTION AREAS IN THE MIDWEST AND TX) AS OF 3 P.M.

COW AND BULLS CARCASS FOB OMAHA

4.0 LOADS REPORTED

COMPARED TO FEB. 25 REPORT: UTILITY CARCASSES MOSTLY 5.00 HIGHER; CUTTER NOT ESTABLISHED. DEMAND AND OFFERINGS LIGHT.

UT, BRK 2-4 450 LBS. AND UP, 1.0 LOADS, RANGE 62.00, LATEST ESTB. MKT. 62.00.

UT, BNG 1-3 400 LBS. AND UP, 3.0 LOADS, RANGE 66.00-67.00, LATEST ESTB. MKT. 66.00-67.00.

CUTTER 1-2 350 LB. AND UP, UNQUOTED.

BULLS YG1 500 LBS. AND UP, UNQUOTED.

COW AND BULL CARCASSES CAF WEST COAST

MARKET FOR WEEK ENDED FEB. 21.

UT, BNG 1-3 400 LBS. AND UP, RANGE 63.00.

CUTTER 1-2 350 LBS. AND UP, RANGE 63.00.

BONELESS PROCESSING BEEF/ BEEF TRIMMINGS

211.0 LOADS REPORTED

FRESH 90% BONELESS BEEF 2.00-5.00 HIGHER IN THE MIDWEST, AND 7.00 HIGHER IN TEXAS; 85% 3.50-6.00 HIGHER; 75% 3.00-4.50 HIGHER; 65% 2.50-3.00 HIGHER. DEMAND MODERATE TO FAIRLY GOOD FOR

LIGHT OFFERINGS. BEEF TRIMMINGS HIGHER ON MODERATE TO FAIRLY GOOD DEMAND AND LIGHT TO MODERATE OFFERINGS.

FOB OMAHA BASIS

90% FR, 40 LOADS, RANGE 96.0-100.0 WT. AVG. 97.54.

90% FZ, 2 LOADS, RANGE 100.0, WT. AVG. 100.00.

85% FR, 19 LOADS, RANGE 86.0-91.0, WT. AVG. 88.68.

85% FZ, UNQUOTED.

75% FR, 3 LOADS, RANGE 73.0-74.0, WT. AVG. 73.50 A.

75% FZ, UNQUOTED.

65% FR, 15 LOADS, RANGE 58.0-61.0, WT. AVG. 58.40.

65% FZ, UNQUOTED.

50% FR, 106 LOADS, RANGE 46.00-48.00, WT. AVG. 47.37.

50% FZ, UNQUOTED.

50% BOX, UNQUOTED.

BULL 92-94, UNQUOTED.

FOB EAST TX & OK

90% FR, 21 LOADS, RANGE 100.0, WT. AVG. 100.00.

90% FZ, RANGE 98.0, WT. AVG. 98.00 A.

85% FR, 85% FZ, 75% FR, 75% FZ, 65% FR, AND 65% FZ, UNQUOTED.

CAF NE AREAS

90% FR, 5 LOADS, RANGE 102.0-103.0, WT. AVG. 102.20.

90% FZ, UNQUOTED.

85% FR, 85% FZ, 75% FR, 75% FZ, 75% FR, 65% FR, 65% FZ, UNQUOTED.

CAF WEST COAST BASIS

WEEK ENDED 2/21/97

90% FR, RANGE 93.5, WT. AVG. 93.50.

90% FZ, UNQUOTED.

85% FR, RANGE 80.5-83.0, WT. AVG. 82.17.

85% FZ, UNQUOTED.

75% FR, RANGE 69.0, WT. AVG. 69.00.

69.00.

75% FZ, UNQUOTED.

65% FR, RANGE 54.0-58.00 WT. AVG. 55.56.

65% FZ, UNQUOTED.

50% FR, RANGE 44.0-46.00 WT. AVG. 44.61.

50% FZ, UNQUOTED.

ABCDE AFTER QUOTES REPRESENTS DAYS SINCE LAST ACTUAL MARKET TEST. QUOTES ARE DROPPED AFTER 5 DAYS OF NO TEST OR BEFORE IF THEY NO LONGER REFLECT CURRENT MARKET CONDITIONS.

SOURCE: USDA MARKET, DES MOINES, IA.

Indiana

Farmers

HOMER CITY, PA

FEBRUARY 27, 1997

CATTLE: 215: Steers: Steady to 5.00 higher; Heifers: Steady to 7.00 higher; Cows: Steady to 1.50 higher.

STEBERS: Choice 1100/1450 lbs, 62.50-71.75; Select 55.00-61.00; Standard 42.25-54.00; Holsteins: Select 47.75-51.00; Standard 36.00-41.00.

HEIFERS: Choice 1000/1475 lbs, 62.00-71.75; Select 55.75-62.00; Standard 35.25-54.75.

COWS: Breaking Utility and Commercial 34.50-43.00; Cutter and Boning Utility 30.50-34.75; Canner & Low Cutter 24.50-30.00; Shells down to 18.00.

BULLS: Few Yield Grade 1 1985 lbs, one at 48.75; Few Yield Grade 2 1050/2365 lbs, 37.00-40.50.

FEBRUER CATTLE: Few STEERS: M-1 285/625 46.00-58.00; M&L-2 375/780 lbs, 34.00-49.00; Few HEIFERS: M-1 265/500 lbs, 52.00-61.50; M&L-2 400/700 lbs,

27.50-48.50; Few BULLS: M&L-2 450/850 lbs, 32.50-44.00.

CALVES: 80: Vealers: Few Choice 150/160 lbs, 51.00-55.00; Good 130/230 lbs, 35.00-40.00; Standard & Good 90/105 lbs, 16.00-25.00; Standard & Good 70/85 lbs, 20.00-25.00; Utility 60/65 lbs, 8.00-10.00; FARM CALVES: Steady to 35.00 Lower; No 1 Holstein Bulls 95/120 lbs, 35.00-42.50; No 2 Holstein Bulls 85/115 lbs, 26.00-35.00; Few No 2 Holstein Heifers 80/95 lbs, 35.00-65.00; Beef

Cross Bulls & Heifers 80/95 lbs, 29.00-47.00.

HOGS: 49: Barrows and Gilts: Steady to 2.00 Lower; 1-3 205/260 lbs, 47.00-48.25; 2-3 230/290 lbs, 45.00-48.85.

SGWS: Few BOARS: 400/450 lbs, 34.00-35.00.

SHEEP: 6: Choice 55/90 lbs, 122.50-125.00; Slaughter Sheep: One at 39.00.

GOATS: 2: Medium 40.00 & 56.00/Hd.

Meeting For Dairy Farmers Interested In Organics Set

CROPP Cooperative, which markets dairy products nationwide under the Organic Valley label will have an informational meeting for dairy farmers in Southeastern Pennsylvania who are interested in becoming members of this growing, member owned and operated cooperative of dairies. The meeting will be Wednesday, March 12, 1997 at 10:30 a.m. at the Harvest Drive Restaurant on Route 340 in Intercourse and will focus on requirements for membership, as well as a discussion of what is involved in transitioning the dairy farm to

organic certification. Aaron Hoover, a CROPP member from Wisconsin will be on hand to share his experience on his organic dairy, and answer questions about what makes CROPP a unique organization with a great deal of experience and a bright future in Pennsylvania. Lunch will be provided.

If you have questions regarding this meeting or if you cannot make it to the meeting but would like more information about this opportunity, please contact Steven Fiscus at (301) 478-2103.

Farmer Boy Ag Systems Inc.

See us for all your SWINE or POULTRY BUILDING REMODELING or RENOVATION We can do the complete job

• Heating • Ventilation • Cooling • Watering • Feeding

FLOORING

Polygrate GRO-MORE Nursery & Weanling Flooring

(for pigs up to 70 lbs.)

Compare the features of POLYGRATE GRO-MORE Flooring and you'll understand why more and more successful producers are making POLYGRATE GRO-MORE their first choice. An ideal combination of 1/2" void and 5/8" wear surface allows for thorough cleaning and maximum life span of floor

• Outstanding Traction POLYGRATE's unique "high-low" finger design provides outstanding traction for pigs of all sizes, while enhancing safety and comfort

Weight

No other plastic floor is comparable to the much heavier "cast iron" approach that separates POLYGRATE from all the others

Safe, Rounded Surfaces

Cost

Dollar for dollar there is no better value for your hog operation than POLYGRATE Flooring and Framing. No other product compares for strength, versatility, ease of assembly, longevity and enhancement of production.

HOG and POULTRY CONTRACTS AVAILABLE Contact Us Today!

We Carry A Full Line Of Replacement Parts for your Poultry, Hog and Cattle Needs...

CHORE-TIME Cumberland Shenandoah HH Hired-Hand

Check Our Warehouse Prices Complete installation of all products we sell!

24 Hour Service

Farmer Boy Ag Systems Inc.

410 East Lincoln Avenue, Myerstown, PA 17067 717-866-7565 • 1-800-845-3374

Hours: Mon-Fri 7 to 5:30 Sat 7:30 to Noon

WE SHIP UPS

BUILDING SUPPLIES

Master Distributor of

Amerimax ROOFING & SIDING

PLYCO CORPORATION DOORS & WINDOWS

We Can Construct The Building You Need



Complete Buildings Supplies for your Agricultural Needs

FEEDING

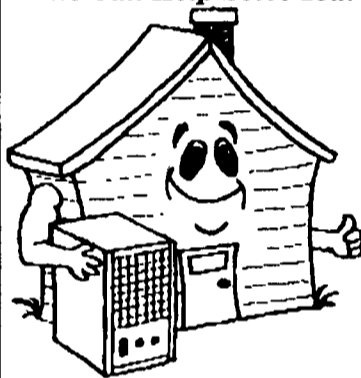
STAINLESS STEEL HOG FEEDERS

From Nursery to Finishing Feeders. Economically priced and available in single-sided or double-sided with feeding capabilities from 4 holes up to 14 holes.



FRESH AIR FOR LIFE

We Can Help Solve Your Indoor Air Quality Problems



Check Out Our Check List:

- ✓ Smoke ✓ Dust ✓ Mold
- ✓ Mildew ✓ Odors
- ✓ Chemical Gases ✓ Bacteria

Residential • Commercial • Light Industrial

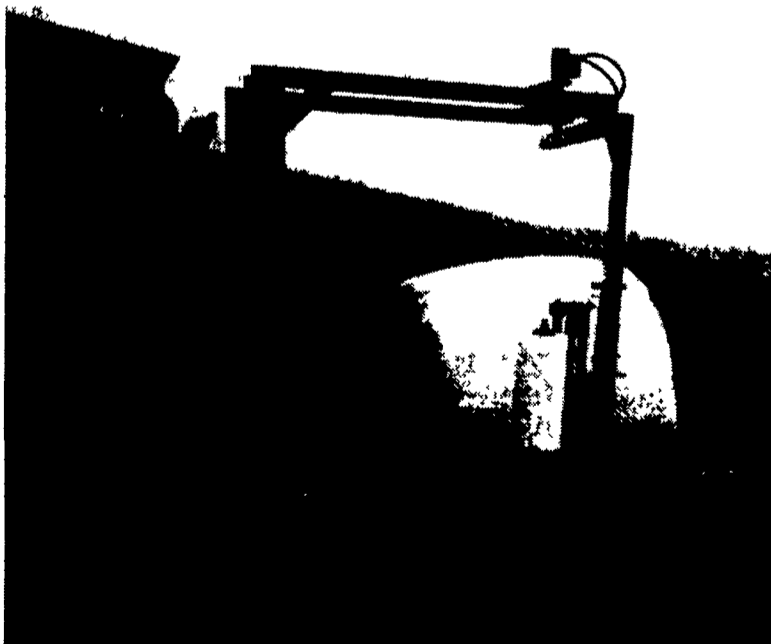
Make a Sick Building Well With the Living Air XL-15

Living Air Purification Systems Produce Fresh Air Electronically

Your Independent Living Air Distributor VAN VEEN ASSOCIATE

CALL TOLL FREE 1-888-822-5225

FARMLUND, INC. ROUND BALE WRAPPER



LOAD-WRAP-TRANSPORT-UNLOAD ONE MAN OPERATION

FOR YOUR LOCAL FARMLUND DEALER CALL:

HAMILTON EQUIPMENT, Inc.

Wholesale Distributor: 567 SOUTH READING ROAD EPHRATA, PA 17522 1-717-733-7951