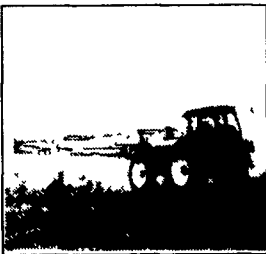


**GVM**  
INCORPORATED

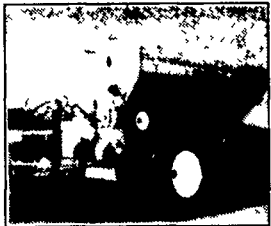
What you need... When you need it!

**NEW!**



**Row-Cat Post Sprayer**

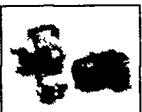
- Self-propelled with speeds of 45-50 mph
- No Hydrastats All Mechanical Drive



**GVM TranSpread**  
2.5 to 8 ton capacity



**Melroe Spra-Coupe**



**Hypro Roller Pumps**



**Simpson Foam Marker**



**Norwesco Tanks**



**Rodney Troxell Parts Sales**

**Call Today For Our 1997 Product Catalog We're Ready To Serve You!**

**GVM**  
INCORPORATED

374 Heildersburg Road, Biglerville, PA 17307

**800-345-3546**

**Don Cowher**  
Equipment Sales

Manufacturer of:  
HydraSpray, Row-Cat  
Crop Sprayer, TranSpread  
Spreaders, Nozzle Alerts  
We accept Visa & MC on all orders

Distributors of:  
Norwesco Tanks, A wide variety of pumps, valves, couplings, fittings & hose. Spraying Systems, Accessories, Melroe Spra-Coupes, Mobility Spreaders, Layco Blenders & Conveyors, Mid-State Tanks, Precision Pull Sprayers, Swinger Loaders

**1586 IH**  
new T.A. and clutch in 96.  
Engine uses oil

**\$9,000**

**717/272-0041**

**REBUILT WISCONSIN ENGINES**



2 & 4 Cyl. Engines  
16-65 H.P.  
With or Without  
4-1 Cl. Rd.  
• 2 Cyl. Baler Engines \$800  
• 4 Cyl. Baler Engine VH4D \$1,250 w/4-1 C/ Rd. \$1,850  
VG4D w 4-1 Cl. Rd. 37 HP - \$1,950

**RECONDITIONED PORTABLE WELDERS**  
Lincoln & Miller  
150-300 Amps  
Check our Prices!

**DELIVERY AVAILABLE IN LANCASTER CO.**  
**FISHER'S FARM SHOP**  
302 Forrest Manor Rd.  
Lincoln Univ., PA 19352  
**610-869-4477**  
Call 8-8:30 AM  
Mon. Thru Fri.

- Int. 1466, nice, Fresh Overhaul.....\$9,800
- Int 1086 cab New T/A, injection pump, Tires.....\$13,000
- MF 1080, New clutch & multipower & paint.....\$7,900
- IH Hydro 100, rebuilt hydro.....\$9,000
- IH 766 Black Stripe, 3000 hrs.....\$10,500
- JD 3140 4WD Ldr, New rods & mains, new tires, 80 hp.....\$18,500
- Farmall 756 High Clear.....\$5,000
- IH 656 WF.....\$4,500
- IH 6740, New Motor, Clutch, Repainted.....CALL
- (2) IH 624 w/Ldr.....\$3,000 & Up
- IH 674D, new engine, clutch, painted.....CALL
- CIH 585 4WD Ldr.....\$17,500
- Int. 504G, WF, Low Hrs.....\$5,000
- Farmall M.....\$1,300
- AC WD-45, Nice.....\$1,800
- IH 434 w/Loader.....\$5,500
- (2) Farmall H, 1 w/loader.....\$1,000 & up
- IH B275.....\$2,500
- Ford 9N, New Motor, Clutch, Painted.....CALL
- Kioti LB 2614 D 4WD, 625 hrs.....\$6,950 O.B.O.
- FNH LX885 skid steer loader, low hrs., excellent cond.....CALL
- Case 1835C Skid Loader, Fresh Overhaul & Paint.....\$12,000
- Massey Harris pony w/attachments.....\$2,300
- Bush Hog 20' Batwing Mower, Used Very Little.....\$8,000
- NI 3810 "V" Spreader.....\$2,000
- Int. 700 5 bottom plow.....\$1,500
- Brillion cultipacker.....\$3,000
- Brillion 15' transport packer.....\$2,500
- White 14' disc.....\$2,500
- AC 15' field cultivator.....\$1,500
- Caretree 40" Digger Head.....\$6,000
- Vermeer 7524 Digger Head.....\$5,000
- Princeton Tree/Shrub Planter w/5 Shoes.....\$2,000
- Irrafance Irrigation System, Complete w/Traveller, Pump, Pipe, Etc., Ex. Cond.....\$18,000
- '86 GMC 3/4 Ton w/Service Box.....\$4,500
- '68" Heil Tanker, 8000 gal.....CALL
- '78 Chevy, 4WD, 1/2 TON, w/Snowplow.....\$4,500

**LOG BARN Equipment**  
109 Quarry Dr., Bloomsburg, Pa. 17815  
(717) 387-1779

**GRINDERS & MIXERS**  
IH 354 w/extension auger  
IH 1150 w/extra screens  
Gehl 120, extra screens, nice

**CORN PLANTERS & DRILLS 30**  
JD 7000, 4R 30", nice \$3,875  
IH 4R air planter w/monitor  
JD FBB DD Grass Seed  
2R, 3 Pt & Pull Type Planters  
4R & 6R Planters

**LOADERS & SNOW BLOWERS**  
JD 3pt 7', \$1,500  
IH 3pt 7', \$1,250  
3pt 8', \$1,650  
IH 3pt, 7', \$1,650  
NH high lift 3pt bale mover w/grab  
Farmall C loader  
9 extra loader buckets  
Used 7' Motor Mount Front End Snow Blower, \$750  
8' Front Snow Plow, \$450  
Ford HD Loader w/Pump & Valves, \$1,500  
(2) Case Loaders Off 310 & 440 Case  
Kelly w/Hyd Bucket & Pump, Valves  
IH Fast Hitch Blades 7' & 8'  
Tractors w/Loaders  
Snow Blades for Loader or Front Mounted  
Sauder Front Mounted Blades

**TRACTORS**  
IH 350 gas, crawler loader, 4N1 bucket  
MF 1155 V8 diesel, cab  
MM UB LP gas, WF, PS,  
1928 AC Green 2035 on factory steel  
Ford 9N, good runner, \$1875  
Farmall 656 diesel, 3pt, WF, nice  
Farmall 300 utility, PS, 3pt, clean  
Ford 860, live PTO, PS, clean  
IH 1466 red cab, diesel, coming in  
MF 1085 diesel w/cab, MF 246 loader clean unit  
JD 630 NF, roll guard, roof, \$5500  
IH 706 diesel WF, \$5,500  
NH L35 gas skid loader, \$3,500  
IH 856 diesel, 18x38 rubber, 3pt, nice  
IH 1066 diesel, 18x38 rubber, nice  
JD high crop, WF sprayer w/dual belly tanks, \$4,500  
IH 1206 diesel, 20 38 rubber & cab  
IH 434 diesel, w/H loader, nice  
Farmall 504 gas, PS, 3pt  
AC D14 WF w/loader, \$2,350  
AC 180 diesel, \$4,500  
IH 340 gas, crawler loader w/bucket & blade \$3,500  
IH 1206 diesel fender tractor  
IH 656 NF gas, w/H 2000 loader  
JD 4040 cab, air, quad, 2,600 hrs., nice  
Case 530 loader backhoe

Oliver 880 Gas, High/Low, PS, 3Pt., Extra Sharp, \$4,500  
JD D, on factory steel  
IH 400 gas, PS, \$2,000  
Case SC w/Eagle Hitch, \$1,000  
JD 620 NF, \$2,850  
JD 620 NF, \$3,500  
AC WD 45, PS & loader  
Case 310 crawler loader, \$3,450  
IH 300 forklift  
AC D15 Diesel, 3 pt, \$1,850  
MF 95 Diesel  
Ford 6000 diesel WF, \$2250  
Oliver 77 Gas, \$1500  
Ford 6000, Diesel

**CONSTRUCTION EQUIPMENT**  
IH 7018 diesel dozer w/10' blade & winch, good clean dozer  
Rear pulley assembly for Cat D4  
IH TD18 dozer, diesel motor w/clutch  
IH TD14 dozer, diesel, motor w/clutch  
GMC 6-cyl diesel motor w/clutch  
(8) 23x5x25 pan or pay loader tires  
Pull Type Road Sweeper w/Motor, Excel \$2500

**WIDE FRONT ENDS & DUAL WHEELS**  
Farmall C200 & 230  
2 Sets IH 5088 & 1566, 20x38 Duals  
2 Sets 20x38, 15x38, 16x38, 18x26, 18x34, 18x38 Duals, \$950

**HAYBINES**  
Case IH 1570 Hydraswing  
NI 299 9' nice  
NH 1495 hydro diesel, cab, air, 12', yellow hood & cab, \$5,500  
Late JD 1209 Nice  
AC 9' discbine, \$3,250  
Deutz AC Discbine  
Hesston 1180 Discbine, \$1,500  
NH 499 Hydro, Swing, 12'  
NH 404 Hay Crusher  
Gehl 440, 9'  
MC Rotary Scythe  
MF Hail Mower  
JD 1209, 9'

**MOWERS/ROTARY MOWERS**  
Woods 14' rotary cutter, nice  
NH 451 w/9' bar \$1,675  
New 5', 6', 7' finish mowers  
Ford 3 Pt Sickle Mower  
Brady 12' Flail stalk cutter  
JD 12' Flail stalk cutter  
IMC 6' 3pt finish mower, \$650  
IH Fast Hitch Belt Drive  
IH Semi Belt Drive  
IH Pull Type Belt Drive  
Brillion 6', pull type, \$675  
Ford 3pt belt drive

(3) IH Semi & Trailer Belt Drive Mowers  
JD 707 14 Rotary Pull-Type Mower  
JD Side Mount Mower Off JD 3010  
JD 950, 3 Pt, Belt Drive, 9' Bar  
5' 3 Pt. Finish Mower, \$685  
JD 7' Trailer, Offset Wheels  
3 Pt 6, 7 & 8'  
JD 14' 1408, 3 pt.

**MISC.**  
IH 3R 30" corn head off IH 830, nice  
NI Elevator w/drag line, real nice  
Soybean Cleaner  
IH Elevator w/Drag Elevator  
IH & JD Mowers

**WAGONS**  
(2) New Country Boy 295 bu gravity bins  
Bale Wagon \$750  
(4) Badger unloading wagons, tandem axle  
w/roof, \$2,300-\$2,650  
(3) Gravity bin wagons, \$750-\$950  
Badger tandem axle w/roof  
Heavy Duty Flat Wagon  
Bin Wagon w/Gear \$750  
IH 120 Single axle w/roof  
Badger tandem axle w/roof  
New Bin Boxes w/Unload Gears

**SPREADERS**  
JD 450 hydro push  
(2) NI 244 tandem axle  
IH 595 tandem axle  
Martin, Tandem, Liq w/hyd gate axle  
Martin, Tandem axle - Liq.  
NI 214, Good Spreader  
Hawk Built Tandem Tank, Right Hand  
NH Tank Spreader  
NH 667 Tank Rt. Hand Throw

**COMBINES**  
Corn Heads & flex heads  
(2) NI 846N, 6R 30"  
AC M or L flex head  
AC N5, N6, 15' flex 6R 30"  
MF 4R 30", 4R, 38", 6R, 30"  
MF 13', 15', 16', 20' flex  
NH 4R 30" & 38", top  
White 4R 30", 4R, 38", 6R, 30"  
White 13', 15' flex  
JD 4R 30"  
JD 13', 15', 18' flex  
IH 430 & 438  
IH 820, 13' to 18'  
IH 810, 13' to 15'  
AC F & F2, 4R 30", 4R 38"  
AC M & L 4 R 30", 4R, 38", 6R, 30"  
AC M & L 13', 15' rdgid  
NI 11' & 13' flex  
Lots more heads in stock!

MF 510 Hydro diesel  
JD 707 14 combine  
COMING IN:  
1975 4400 diesel, nice  
AC K2 gas, NICE  
NI 717 Uni combine, harvester, 200 acres, like new  
Late NH TR85 rotary, hydro Cat diesel, 2700 hrs., nice  
NI 702 gas w/767 harvester, 3 R head & pickup  
NI 702 diesel w/767 harvester, 3R corn & pickup  
NI 705 diesel w/838 husker  
1976 JD 4400 diesel, 2000 hrs., nice  
MF 540 gray cab, REAL CLEAN  
NI 708 Perkins dsl, hydro w/737 husker, nice  
JD 6820 hydro dsl, nice  
JD 55 square back w/cab, 12' flex, 3R 30" corn, 2R 38"  
AC E w/cab, corn & 10' grain head, \$3,000  
NI 702 diesel w/combine  
JD 42 pull type w/10' head  
IH 151 gas w/4R 30" head  
AC F2 diesel, low hours, 1 owner  
Late JD 7700 hydro dsl. w/heads  
JD 4400 Diesel w/heads  
AC K W/10' grain, 3R, 30" corn  
JD 45 square back, w/10' grin, nice  
NH TR70 Ford Diesel Gear  
JD 7720 Hydro, diesel, 2000 hrs  
JD 4400 diesel, late black seat  
Late IH 1440 Rotary Combine  
MF 510 diesel w/heads  
MF 300 Cab, 10' Grain & Corn  
Big 2 wheel PTO grain cart holds between 400-500 bu. w/hyd fold unloading auger, \$3,850  
JD 7700 Diesel w/Head  
1980 JD 6620 Side Hill Hydro Diesel  
IH 315 Hydro, Gas, 10' Grain  
(2) IH 93 w/10'  
1975 6600 Side Hill, Diesel  
NH TR70 Cat Diesel, Hydro  
1976 AC F D w/Choice of Heads

**CORN PICKERS**  
NI 838 husker  
NI 704 gas & NI husker  
NI 323  
Woods 1R  
IH 1PR, 1R  
JD 300, 3R  
NI 325 2R, 30"

**BALERS & RAKES**  
JD rake, \$750  
NH 256 Rake, nice, \$1,850  
NH 276 w/Thrower, nice, \$2,950  
Late Hesston 5540 round baler  
IH 2400 Round Baler, \$3,500  
JD 346 Wire Tie w/Kicker  
NH 273 w/Thrower

JD 1240, 12' off-set \$3,500  
IH 475 hyd. wing disc, 18', \$4,500  
JD 614 rotary hoe, 3 pt, 20' w/transport \$1,850  
IH 12' wheel disc, \$750  
JD 220 18' off-set disc, \$3,550  
12' Bush Hog off-set disc, \$3,500  
IH 350 10' wheel disc, \$475  
20' McKee field cultivator, hyd. wings & basket \$1,850  
12' MF wheel disc, \$1,375  
IH 480 18' wing \$1,850  
JD 220 18' off-set disc \$3,850  
IH 315 12' roller harrow \$1,850  
JD 16' wing wheel harrow \$1,550  
(2) Brillion wing wheel harrows, 15' & 18'  
More disc harrow, packers are here and coming in

**PLOWS & CHISEL PLOWS**  
IH 530 3x16 semi mount  
IH 310 3x16 semi mount  
IH 450, 3b 16" spring reset, \$2250  
IH 6b 18" on-land in-furrow front wheel spring reset  
IH 7x16 spring rest on-land hitch, \$3,000  
IH 7x20, 6b, 16" hill side hitch, toggle trip, \$2,500  
IH 710, 6b, 16" spring reset, \$2,850  
IH 720, 5b, 20" spring reset, \$3,000  
(2) JD 2500 5b 18", 6b 18" spring reset, \$2,700 & \$3,000  
IH 716 on-land hitch trip, \$2,250  
Oliver 6b 16" on-land hitch furrow, wheels, spring reset, \$1,575  
IH 5T ripper, \$2,750  
IH 540, 4b 16" trip, \$850  
IH 700 5b 16" trip, \$950  
Kewanee 9T trailer chisel plow, \$1,450  
AC 10T trailer chisel plow \$1,500  
(2) 3 pt 9T & 10T chisel plows, \$700-\$975  
IH 420, 4b 16" 3 pt trip plow \$675  
White 5b 16" trip plow \$1,450  
Ford 3 pt 2b 12", 2b 14" plow \$175-\$375  
JD 6b 16" trailer trip plow, \$2,250  
IH trailer plows, 2, 3, 4 bottom  
More plow on hand and coming in

**DISMANTLING FOR PARTS:**  
Balers  
Combines  
Cultivators  
Discs  
Drills  
Harvesters  
Haybines  
Mowers  
Pickers  
Planters  
Plows  
Spreader  
Tractors

**EXTRA CORN HEADS & GRAIN HEADS**  
200 To Choose From  
2, 3, 4, 6 Row Corn Heads.  
All Size Grain heads,  
Flex & Rigid

D 7700 or 7720, 4WD drive unit  
1977 Freuhauf 42' Trailer, alum. floor w/side kit & tarp \$6,500  
Low Boy Trailer, new floor, good tires CALL  
DISC & HARROWS & PACKERS  
AC 2600 22' hyd. fold 8, 10, 12, 14 ft packers  
IH 480, 18' hyd. wing, \$3,850  
JD 360 14' off-set \$3,250  
JD 950 10' roller harrow, \$1,650  
Brillion 10' packer w/wheels \$1,150

**COMBINES FOR SALVAGE**  
IH: 1460, 1480, 915, 815, 715, 615, 315, 205, 203, 503, 403, 303, 93, 91, 141, 105, 101, 82, 80, 76, 74, JD: 7720, 7700, 6820, 6600, 4420, 4400, 3300, 105, 95, 55, 45, 40 MF: 660, 700, 750, 510, 410, 300, 205, 35, 92, 82, 72, 90, 80, 70, 80, 27, 28, AC: Gleaser, AC N5, F, P2, L, M, M2, K, G, E, C, C2, A, 60, 66, Oliver: 7600, 545, 535, 525, 430, 40, 35, 33 NI: Uni, 802, 709, 710 Combine, NI 717, Huskers: 705, 702, 701, Combine Shellers & Harvesters, Case: 1190, 980, 700, 680, 600 NH: 1400, 975, 985, TR70, NH TR85, MM: 5297, 3406, MM Uni, White 8800, White 8800, White 8700, Field Boss, 7300, Massey 7500, Straw Spreaders & Choppers: JD 7720, Motors, Transmissions, Tires, Corn & Grain heads, Grain Savers, 1984 JD 6820 Side Hill w/Heavy Steering Axle.  
JD 5480, 5440 8P Harvester, NH 1880 8P, NH 785 Skid Loader, AC Hydro Skid Loader, Parts For IH 1449, 1460 Rotaries & NI 717 Combine, NI 802 w/Harvester, JD 4425 500 Hrs., JD 6800 & 6820 Side Hills

**GOOD RUNNING MOTORS**  
Tractors: JD: 8850, 4448, 4240, 4320, 4020, 4018, 2840, 2810, 2818, 2828, 1010, IH: IH TD18 dozer, diesel motor, IH TD14 dozer, diesel motor, 1088, 866, 856, 808, 758, 708, 658, 560, 480, 408, 480, 584, 574, 684, 544, 504, 348, 308, C, H, M, AC: D15, D17, D19, WD, WC, XT 190, 210, 220, CA, C, Case: 530, 300 Ford: 8N, NAA, 890, 871, 3000, 4000, 5000, 6600, (2) IH 6 cyl. gas w/clutch Chrysler Ind. 8 Cyl., w/Clutch & Cyl. Hercules w/Clutch. Combines: JD: 7720, 7700, 6820, 6600, 4420, 4400, 3300, IH: 1460, 1440, 915, 815, 715, 615, 315, 205, 203, AC: L, M2, F, C2, B, E, MF: 700, 750, 510, 410 300 NI: V8 Gas & Diesel.

**TRACTORS FOR SALVAGE**  
IH: 3414, 1250, 1068, 986, 866, 866 Hydro, 808, 706, 704, 674, 664, 680, 856, 574, 580, T, 544 Hydro, 544 Gear, 504, 404, 480, 450, 444, B 414, 400, 350, 340, 300, 8275, 240, 230, 200, MTA, M, H, C, BN, A, Cub, 154 Cub, F30, F20, F14, F12, JD: G, M, 310, backhoes, 4230, 4020 dsl., 4010, 3020 dsl., 3010, 2240, 2510, 2020 dsl., 2018, 7300, 720, 520, 430, 420, 70, 60, 50, A, B, AC: 5060, AC 200, 190XT, AC 170, AC 175, 180, AC 185, D14, D15, D17, D19, WD, WC, CA, C, B, MF: 1155, 90, 85, 444, 333, 175, 65, 44, 33, 30, 20, Case: 800, 530, 440, 310, 300, DC, SC, VC, VAC, Ford: 9608, 6000, 5000, 4580, 4100, 4000, 3400 ind., 960, 951, 880, 800, 800, 641, 680, 6N, 9N, Ford major, 5908, Oliver: OCS Crawler, OCS, 1908, 1900, 898, 778, 588, 88, 77, 78, 68, 68, 85, David Brown 980, 345 Leyland, Gen, IH TD9 diesel crawler loader.

**KEITER'S FARM MACHINERY**  
Halifax, PA 17032 Rt. 225  
20 mi. north of Harrisburg  
Mon.-Fri. 8-5 • Sat. 8-12  
**PHONE: 717-362-9574**  
POSITIVELY NO OUT-OF-STATE  
PERSONAL CHECKS

**WE DO NOT SHIP**