



Angelique, Alisha, Galen (with Tanner) and Galen II in the award room of the McDonald farm.

Five Family Members Earn American Farmer Degrees

LINDA WILLIAMS

IMLER (Bedford Co.) — Five in one family earned the prestigious American Farmer degree and the next generation is slated to follow in their predecessor's footsteps.

The Galen McDonald family is, without a doubt, an all American farming family. Galen Sr. received the award in 1972 for his work on the farm where he grew up and still resides.

Over the years the McDonald's four children, Angie, Missy, Alicia, and Galen II have participated with their registered Guernseys in the Bedford Fair, Cambria County Fair, Morrison's Cove Dairy Show, Cookport Fair, the All American Dairy Show and have had a junior champion at Louisville, Kentucky.

The American Farmer degree is earned by keeping records from ninth grade until three years following graduation. Records must be kept on all farm projects as well as a show of leadership in the farming community.

You must also have been awarded the state FFA degree and have earned the Greenhand, Chapter, and Dekalb awards.

All four of the McDonald children participated in FFA at Chestnut Ridge High School. Angelique (McDonald) Walason received her American Farmer degree in 1992; Malissa (McDonald) Garth, in 1994; Alicia in 1995, and Galen in 1996.

Still very involved in farming, Angelique, a former Pennsylvania state Guernsey queen, is married to Jeff Walason, and resides on the family farm. She has one child, Tanner. "He's next in line for the award," Angie says with a bright smile.

Angie is the DHIA technician for Bedford and Blair Counties and is the tester for 42 herds.

Malissa, married, another McDonald state Guernsey queen, lives on a farm in Dauphin County and has two daughters. A sign outside of the country decorated home of the McDonalds indicates that "Grandchildren are spoiled here" and the two little girls plus Tanner know exactly what this means.

Alicia is the herdsman for the McDonald farm. Getting up each morning at 5 a.m., she milks the 72 head of registered Guernseys and Holsteins with only some help

from a cousin during the summer months. She also takes care of breeding and stock development.

Galen II is married to Marjorie Leap and they are expecting yet another "American farmer," in April. Galen helps his father farm more than 300 acres during the summer months. He is employed by Rockland Inc.

Alisha, Missy, and Galen serve on the Morrison's Cove Dairy Show board.

Both Alisha and Angie are 4-H leaders in the Southern Cove Dairy Show. Alisha is on the sale crew of the state Guernsey Convention which is held in Bedford in April.

Alisha and Galen Sr. serve on the Bedford County Fair Dairy Committee.

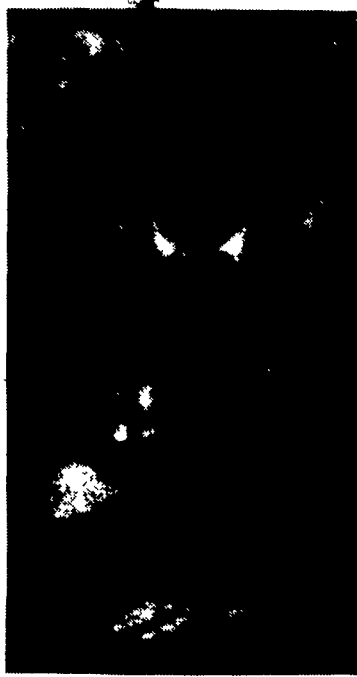
Angie and Alisha has been named outstanding Guernsey youth.

The McDonalds have also won the All-American Dairy Show outstanding display herdsman award.

Meanwhile, Sonja McDonald, is kept busy being a mother, grandmother, and taking care of her creatively decorated farm

home.

The McDonalds have all been active in the Weyant Methodist Church and both Sonja and Galen serve on the church board.



Malissa now lives in Dauphin County but is still a farmer. She is the mother of two daughters.

Farm Woman Testifies At Discrimination Hearing

GROVE CITY (Mercer Co.) — Secretary of Agriculture Dan Glickman called for hearings across the country to allow farmers and ranchers the opportunity to relay to the government any cases of discrimination and lack of service due to either being a minority or a farm woman. American Agri-Women Vice President for Vital Issues, Carol Ann Gregg of Grove City, a farm woman and agriculture advocate, testified on the issue and spoke for the organization which represents more than 50,000 farm, ranch and agribusiness women.

Gregg testified, "As I talked with a number of members across the nation, I found no one who had personally experienced discrimination or harassment in working with USDA staff or officials. Many of these women are farm operators, farm wives and family-

farm corporation officers who have regular dealings with the local Farm Service Agency (FSA) or Natural Resources and Conservation Services (NRCS) personnel with no apparent problems." Gregg went on to praise Secretary Glickman for taking the initiative to correct problems that have been brought to his attention.

Gregg further stated, "More and more women actively participate in their farm operations rather than only provide support for a husband's endeavors. Farm realtors and bankers have begun to look at farm women as contributors to the management of farm operations whether they are sole proprietors, partners or spouses."

For more information regarding American Agri-Women contact Jean Pettibone, President, 6835 Road 2, Kanorado, Kansas, 67741-9400, (913) 399-2204.

SEE YOUR NEAREST



DEALER
FOR DEPENDABLE
EQUIPMENT & SERVICE

PENNSYLVANIA

Abbottstown, PA
MESSICK
EQUIPMENT
RD 1, Box 255A
717-259-6617

Honey Brook, PA
Dependable
Motor Co.
East Main Street
215-273-3131
215-273-3737

Annaville, PA
BHM Farm
Equipment,
Inc.
RD 1, Rte. 934
717-867-2211

New Holland, PA
A.B.C. Groff, Inc.
110 South Railroad
717-354-4191

Carlisle, PA
R&W
Equipment Co.
35 East Willow Street
717-243-2686

Oley, PA
C.J. Wonside
Bros.
R.D. 2
610-987-6257

Elizabethtown, PA
Messick Farm
Equipment, Inc.
Rt. 283 - Rheem's
Exit
717-367-1319

Pitman, PA
Schreffler
Equipment
Pitman, PA
717-648-1120

Halifax, PA
Sweigard Bros.
R.D. 3, Box 13
717-896-3414

Tamaqua, PA
Charles S.
Snyder, Inc.
R.D. 3
717-386-5945

Honey Grove, PA
Norman D. Clark
& Son, Inc.
Honey Grove, PA
717-734-3682
Loysville, PA
717-789-3117

West Grove, PA
S.G. Lewis &
Son, Inc.
352 N. Jennersville
610-869-2214
1-800-869-9029

MARYLAND

Frederick, MD
Ceresville Ford New Holland, Inc.
Rt. 26 East 301-662-4197
Outside MD, 800-331-9122

NEW JERSEY

Bridgeton, NJ
Leslie G. Fogg,
Inc.
Canton & Stow Creek
Landing Rd.
609-451-2727
609-935-5145

Washington, NJ
Smith Tractor
Equip., Inc.
15 Hillcrest Ave.
908-689-7900



Woodstown, NJ
Owen Supply Co.
Broad Street &
East Avenue
609-769-0308