

**Carlisle Livestock Market**

Tuesday, February 4, 1997  
Report Supplied by Auction

SLAUGHTER CATTLE: STEERS CHOICE 1450-1700 LBS. 65.00-70.00, 1100-1425 LBS. 65.50-69.75; SELECT AND LOW CHOICE 1100-1790 LBS. 61.00-65.00; SELECT 900-1050 LBS. 55.00-60.25.

HOLSTEIN STEERS HIGH CHOICE AND PRIME 59.00-61.50; CHOICE 53.50-58.75; SELECT 46.75-51.00.

HEIFERS: CHOICE 64.25-68.00; SELECT AND LOW CHOICE 55.00-64.00.

COWS: BREAKING UTILITY AND COMMERCIAL 35.00-39.00; CUTTER AND BONING UTILITY 34.00-39.00; CANNER AND LOW CUTTER 27.75-33.75; BIG MIDDLE 32.00-34.75; SHELLY 27.00 AND DOWN.

BULLS: YG#1 41.00-44.75; YG#2 38.00-40.50.

FEEDER CATTLE: ACTIVE! FEEDER STEERS MEDIUM AND LARGE #1 450-850 LBS. 55.00-68.00; FEEDER HEIFERS MEDIUM AND LARGE #1 450-700 LBS. 50.00-57.50; FEEDER BULLS MEDIUM AND LARGE #1 375-700 LBS. 55.00-69.00, 750-900 LBS. 42.50-49.50.

CALVES: VEALERS STANDARD AND GOOD 30.00-50.00; HOLSTEIN BULLS #1 95-125 LBS. 73.00-80.00; HOLSTEIN BULLS #2 90-135 LBS. 57.50-70.00; HOLSTEIN HEIFERS #1 90-130 LBS. 90.00-100.00, 75-85 LBS.

52.50-85.00; BEEF X BULLS TO 67.50; BEEF X HEIFERS TO 62.50.

SWINE: HOGS US#1-3 220-280 LBS. 52.25-53.25, 290-350 LBS. 50.50-52.25, 180-210 LBS. 45.00-50.00; US#2-3 51.25-52.00; SOWS ACTIVE US#1-3 300-550 LBS. 47.00-54.00; THIN/WBAK/ROUGH 40.50-46.00; BOARS 375-575 LBS. 36.25-37.25; FEEDER PIGS BY THE HEAD, ACTIVE. 25-55 LBS. 37.00-50.00.

GOATS: BY THE HEAD, MEDIUM TO LARGE NANNIES 59.00-77.00.

LAMBS 95-110 LBS. 110.00-126.00.

SALE EVERY TUES. 5 P.M. FOR PRODUCE, RABBITS, POULTRY AND EGGS; 6:30 P.M. FOR LIVESTOCK. STARTING WITH CALVES, THEN LAMBS, SHEEP, PIGS, FEEDER CATTLE, BOARS, BULLS, FED CATTLE, COWS, HOGS, SOWS.

THE NEXT SPECIAL FED CATTLE SALE TUES., FEB. 18.

EARLYBIRD PENS FOR CATTLE, COWS AND HOGS CLOSE EVERY TUES. AT 2 P.M. FOR PREMIUM PRICES, USE THESE PENS.

PEN LOTS OF CATTLE WILL BE SOLD IN ORDER RECEIVED.

NEXT STATE GRADED FEEDER PIG SALE FRIDAY, FEB. 14 AND 28. RECEIVING 7-11 A.M. SALE TIME 1:30 P.M.

**Leesport Livestock**

LEESPORT, PA  
FEBRUARY 5, 1997

CATTLE 263... PDA... Supply included  
94 slaughter steers ...Compared with last

Wednesday's sale...al. steers steady to 3.00 lower, cows steady to 2.00 lower, heifers steady.

STEERS: Choice 1155/1315 lbs. 61.50-65.00, Select 56.50-62.25, Standard 41.50-52.50.

HOLSTEINS: High Choice and Prime 1505/1650 lbs. 59.25-61.25, Choice 1370/1715 lbs. 56.50-59.75, Select 50.00-55.00, Standard 41.75-48.25.

HEIFERS: few High Choice and Prime 1075/1320 lbs. 65.00-67.25, Choice 950/1525 lbs. 61.75-65.25, Select 55.00-61.00, Select Holsteins 48.00-53.00.

COWS: Breaking Utility and Commercial 36.00-40.00, few 42.75, Cutter and Boning Utility 33.00-36.75, Canner and Low Cutter 29.00-33.50, few 35.00. Shells down to 24.00.

BULLS: Yield Grade No. 1 1190/2010 lbs. 41.00-45.00, one 47.50, few No. 2 1120/1620 lbs. 40.00-41.50.

FEEDER CATTLE: HEIFERS: few Medium Frame No. 1 360/500 lbs. 55.00-60.00.

CALVES 180...Holstein bulls 5.00 lower, heifers steady.

VEALERS: one Choice 90.00, few Good 52.50-60.00, Standard and Good 75/110 lbs. 25.00-34.00, Utility 50/100 lbs. 10.00-22.00.

FARM CALVES: No. 1 Holstein bulls 95/130 lbs. 75.00-90.00, 90/95 lbs. 60.00-75.00, No. 2 80/120 lbs. 42.50-65.00, few 30.00; few No. 1 Holstein heifers 85/120 lbs. 110.00-127.50, few No. 2 80/100 lbs. 42.50-85.00. Few beef cross bulls and heifers 85/100 lbs. 47.50-60.00.

HOGS 80...Barrows and gilts steady to 1.50 higher, sows steady to strong.

BARROWS AND GILTS: US 1-2 230/250 lbs. 53.25-56.00, US 1-3 240/260 lbs. 52.75-53.25, few US 2-3 240/280 lbs. 51.75.

SOWS: few US 1-3 390/540 lbs. 39.50-44.00, few 570/745 lbs. 48.00-52.00.

BOARS: few 265/640 lbs. 36.50-40.00.

FEEDER PIGS 110...US 1-3 20/27 lbs. 125.00-140.00, 30/45 lbs. 90.00-95.00, lot 50 lbs. 120.00, 90/115 lbs. 70.00-72.50. --- per cwt.

SLAUGHTER LAMBS: couple Choice 110 & 120 lbs. 100.00 & 112.50.

SLAUGHTER SHEEP: few 37.50-57.50.

GOATS 22...Few Large 65.00-72.50, one Medium 55.00, few Small 37.50-40.00, Small Kids 15.00-37.50. --- per head.

**Westminster Livestock Auction**

Hagerstown, Md.  
February 4, 1997

Report supplied by auction

SLAUGHTER COWS: 93 HEAD, 2.00 HIGHER TREND. UTILITY 35.00-40.50; HIGH DRESSING 41.00-42.75; CANNERS 29.00-34.50; SHELLY 29.00 DOWN.

BULLS: 11 HEAD, 2.00 HIGHER! YG#1 41.00-45.75, 1 AT 49.75; YG#2 37.00-41.00.

FED STEERS 2.00 LOWER. NO HIGH CHOICE OR PRIME. CHOICE 1200-1500 LBS. 63.00-64.00; LOW CHOICE 59.00-62.00; SELECT 51.00-59.00; CHOICE HOLSTEINS TO 57.50; SELECT 43.00-48.00.

FED HEIFERS HIGH CHOICE 1000-1200 LBS. 61.00-64.00; LOW CHOICE 55.00-60.00.

VEAL CALVES: 111 HEAD. CULLS 85-115 LBS. 24.00-34.00; 50-80 LBS. 15.00-25.00.

FARM CALVES: STEADY PRICES. #1 95-120 LBS. 70.00-84.00; #2

45.00-65.00; 80-90 LBS. 35.00-60.00; HOLSTEIN HEIFERS #1 90-120 LBS. 100.00-115.00; #2 80-100 LBS. TO 75.00; BEEF X BULLS AND HEIFERS 35.00-63.00.

BUTCHER HOGS: 20 HEAD, 1.00 LOWER. US#1-3 220-265 LBS. 52.50-53.00; FEW 190-210 LBS. 45.00-46.00.

SOWS: 10 HEAD. 400-600 LBS. 43.00-48.00; THIN 300-450 LBS. 36.00-40.00.

STOCK CATTLE: 121 HEAD, PRICES STEADY. STEERS MEDIUM AND LARGE FRAME 300-600 LBS. 56.00-68.00; 600-700 LBS. 52.00-62.00; 700-800 LBS. 47.00-57.00.

HEIFERS: MEIDUM AND LARGE FRAME FEW OFFERED. 300-500 LBS. 48.00-57.00; 500-700 LBS. 49.00-58.50.

BULLS: MEDIUM AND LARGE FRAME 200-400 LBS. 51.00-61.00; 400-600 LBS. NONE; 600-700 LBS. 50.00-59.00; 700-900 LBS. 42.00-48.00.

LAMBS: 5.00-10.00 HIGHER. CHOICE 100-125 LBS. 92.00-115.00; 70-90 LBS. 100.00-117.00; 2 152 LBS. AT 72.50 AND 90.00.

SHEEP: 100-200 LBS. 50.00-63.00.

GOATS: FEW OFFERED. LARGE 75.00-92.00.

PIGS AND SHOATS: 223 HEAD. SPECIAL GRADED SALE. BY THE LB. #1-2 PIGS, 17 HEAD 25-35 LBS. 91.00-107.00; 25 LBS. 40-49 LBS. 87.00-99.00; 72 LBS. 50-65 LBS. 95.00-101.00; 5 HEAD 90 LBS. 81.00.

**LEESPORT FARMERS MARKET**

North end of Leesport, PA Turn East off Route 61  
"WHERE FRIENDS MEET"

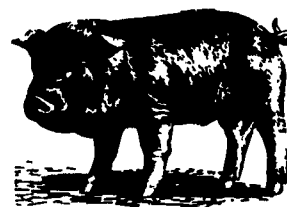
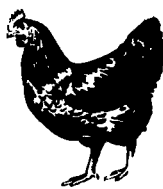
BERKS COUNTY'S ONLY WEEKLY  
CATTLE & SWINE AUCTION -  
WEDNESDAY AT 1 P.M.



FARMER'S MARKET Every Wednesday,  
9 AM TO 8 PM

Garden Fresh Fruits & Vegetables-Bakery Fresh Cakes, Pies and Buns-Butcher Fresh Meats & Cheese-Sporting Goods-Clothing-Furniture - Jewelry - Used Items & Collectibles.

PHONE: 610-926-1307 BILL WEIST & WOODY WEIST, MGRS.



For over 30 years

Telmark has provided

**Lease financing**  
for equipment, vehicles & buildings.



Advantages of leasing your equipment,  
buildings and vehicles from Telmark:

- 100% tax deductible payments
- Guaranteed "True Tax" or fixed purchase option leases available
- Fixed, customized schedules
- Low upfront costs
- Professional, on-site service

Call today for savings with lease financing for equipment, buildings and vehicles.



Ken Darlington  
717-733-3532



Doug Snee  
412-627-5941



Paul Shipper  
302-456-1931



Andrew McLean  
410-827-5052



Elizabeth Anderson  
410-651-4128



Mike Dixon  
814-684-5707



Fred Dixon  
412-346-3455



Lisa Francisco Sonnen  
717-866-9217



Frank Hunter  
716-595-3954



Mike Fullam  
717-966-9202

**Pennsylvania Agricultural Commodities Marketing Association, Inc.**

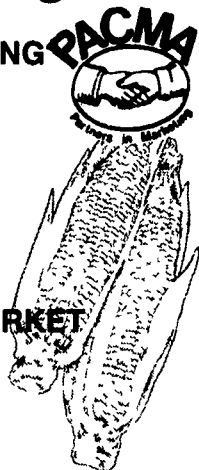
FORWARD PRICING **PACMA** FEED INGREDIENTS

Corn  
Soybeans  
Wheat  
Soybean Meal  
Cottonseed

Hogs  
Cattle

CASH GRAIN MARKET

Feed Grains  
Wheat  
Oilseeds



Soybean Meal  
Distillers Grains  
Hominy  
Cottonseed

RISK MANAGEMENT

Hedging Services  
Market Consultation  
Min./Max. Contracts  
Specialized Contracts

A privately held full service commodity merchandising firm.

Call today to see how PACMA can broaden your marketing efforts whether you're BUYING or SELLING Agricultural Commodities

Rail Facilities are available at Green Castle & Palmyra, PA  
475 East High Street, Palmyra, PA 17078  
800-PACMA Inc. • 717-838-7050

1-800-722-6246

Started by Producers for producers



**TELMARK INC.**

800-451-3322