

Case lawn tractor with 16x8 tires, equipped with 44 in mower, 4ft snow blade, 16 disc, plow, harrow, hydro static drive York Co 717-755-4647.

JDL needs work \$750 JDLA runs \$1350 ACB \$1250 Bill Cumberland Co Day 609-455-1202, eve 445-4664

Snow blower, for Massey Ferguson tractor \$100 Lanc Co 717-484-1045.

Gehl 880 9ft haybine \$450 OBO New Holland 33 chopper \$150 OBO JDB JDA JDMT Berks Co 610-926-8938

200 bales clean barley straw, IH 7' sickle bar mower with steel wheel, needs work \$50 After 4 p.m Berks Co 717-933-4778.

MF 10' plowing disc heavy built \$1500 or trade on field cultivator Somerset Co 814-267-5896

1986 Dodge van 12 passenger 318 V8 new inspection 82,000 miles, gray \$1500. Cumb Co 717-532-8856

International Loadster parts butterfly front end \$150 Axle with springs \$100 Rear with springs \$150 Gas tank \$30 Lehigh Co 610-767-4735

237 John Deere mounted corn picker, good shape Cumberland Co 717-486-3881, or 486-3700

Two brand new Firestone L7215/85R16 Steeltex radials, mounted on Ford 8 hole factory rims, \$100 each Gloucester Co 609-478-6090

1994 Case 1845-C skid loader, low hours, hi flow hydraulics, many extras \$16,500 Power box power \$7500 Bucks Co 215-598-7546

New Holland 275 baler with Super Sweep pickup and thrower Franklin Co 717-532-5911

1944 Ford 1 1/2 ton Marmonis Harrington 4x4 running gear, axles, transfer case, transmission, no motor bro Wash Co 301-824-7477

Approx 40 flush and raised panel masonite door bunks, hinges cut, locksets, drilled some slight damaged \$550 all Lehigh Co 610-767-9373

66 Ford F800 5 yr dump 5/2 runs and works good \$2500 OBO Monro Co 717-629-0190

Old cash register National \$#1068-G from 1940s, Esso station, works fine, but needs ribbon, have keys \$550 OBO PG Co 301-449-6048

880 New Holland harvester with 880w hay head \$900 Juniata Co 717-734-3459

IH 45 Vibershank 3pt 12ft field ready \$850 Call eves Columbia Co 717-683-5359

Snowmobile 1981 El Tigre, 5000 Arctic Cat, 4300 miles, mirrors, hand warmers, cover, garage kept, exc cond Harford Co 410-557-8722

10ft heavy snow plow power angle with under carriage for Ford truck exc cond, make Dierzer \$1500 Middlesex Co 908-251-8895

Two bottom hydraulic 12 ir plow, good cond Jonathar Stollfus, 265 Long Lane alone Pleasant View Rd Honey Brook PA 19344 Chester Co

WANTED
Unusual or Rare Stationary Engines

(1 lunger) paying top dollar
You May Call or Collect Early AM or Late PM
(203) 375-7491
Or Write:
200 River Rd.
Stratford, CT 06494

Auger for 3pt hitch with 24 inch bit \$500 OBO Bucks Co. 215-757-3886.

IH 46 baler. Western saddle, bridle, halter. 1977 Ford pu hub caps 7-50-16" Ford, truck wheel 15" Chev car wheels. Snyder Co. 717-539-8518

Sofa and love seat, matching, dark brown velure loose cushion back \$500 Call eves Berks Co. 610-777-7597.

Unisaw 10" Walker Turner \$300 Air pump \$100 Racine hacksaw \$400 Delta lathe \$125 Belsaw 12" planer w/dust collector Cecil Co 410-398-4313

Gehl 920 two beater forage wagon, exc cond, with flotation tires, shed kept \$1400. Dauphin Co 717-599-5818

Emu eggs, fertile and blown, emu oil products, all natural ingredients, pain reliever, lotion, shampoo, conditioner, also chicks breeders Lanc Co 717-284-5249

Snowplows 8' 7 1/2 7' 6 1/2 6' blades, pumps, frames, parts, buying pumps, working or not, buying frames, for sale Yamaha gold carts. Clinton Co 717-726-7545

Cider press electric drum grinder and juice pump hand hydraulic 400 1/2 gal plastic jug \$900 Lycoming Co 717-584-4055

Maxant 30 frame radial extractor, 40 cyprus 5 frame nuc boxes, used wood frame Lycoming Co 717-995-9288

18 horse power MTD garden tractor 44 inch mower deck 48 inch snow blade, like new York Co 717-244-2219

Books, The Montgomery Co Story PA 1951 \$25 11th edition John Deere Operation of Farm Machinery \$40 sent ppd York Co 717-235-8166

New cedar chests, different styles and sizes, take your pick, Allen Hoover, 1436 Weaverland Rd, East Earl PA 17519 Lanc Co

Oats straw approx 1100 bales Centre Co 814-422-8527

Mercedes diesel engine 4 cyl 121 cu in 60hp farm use, good runner \$90 Centre Co 814-237-4000

Elec poles 9 12-16ft lon 8 28 ft lon \$1 25 a ft if take all will load York Co 717-266-3859

Cashmere goats, flock reduction, 5 does \$100 each \$400 for all 6 wethers \$60 each \$300 for all 4 cashgora \$45 each \$150 for all York Co 717-382-4111

Bolens H16 hydro lawn tractor 16hp, mower, snow blade, new valve job, paint belts, \$1350 OBO Lanc Co 717-684-3129

69 Ambassador, 69 Javelin 72 Gremlin 70 Ambassador will trade for two cylinder John Deere Berks Co 717-933-5096

5000 Ford tractor new tires good cond \$6800 1986 black Blazer good conc \$4700 Lebanon Co 717-865-2529

Meat grinders electric commercial and various sizes Franklin Co 717-749-7110

STOP
Feeding Expensive Feed to Pest Birds



Avitrol treated grain baits successfully remove pest birds from feedlots and farm buildings
HESS AGRI MARKETING
218 Rockpoint Rd., Marietta, PA 17547
(717) 426-3135
EPA Approved
AVITROL
CORPORATION

AKC reg lab pups, black yellow, wormed shots, home raised, many to choose from \$225 Ready 2/8/97 Juniata Co 717-527-4870

Skid loader small one exc cond \$3500 Air brake lathe \$4000 with bench and adapters \$2500 Lebanon Co 717-865-2484

1 pr 700x17 tires gd thread 3 5.50x18 knobby tires 303 British rifle \$85 Heavy duty chain binders \$18 each Dauphin Co 717-545-2086

JD 95 combine with cab 3rn corn head 13ft grain head, needs engine work, make offer Lanc Co 717-626-4157

Free poultry manure, we load, you haul, near Gratz Dauphin Co 717-365-3804

1993 Dodge D350 dually ext cab, diesel auto, loaded, 5th wheel, Reise hitch 55,000 ml factory warranty, 7 yr 70,000 ml exc cond \$18500 Cambria Co 814-948-9769

Pony buckboard, exc cond \$600. Bedford Co 814-842-6783

6ft rotary mower \$100 Home made post hole digger good tree planting 24in auger \$125. Somerset Co 908-326-0151

Pull rite trailer hitch 1975-91 Chev and GMC suburban 10,000 GVW complete Lanc Co 717-653-2721 or 653-4667

Mdl 770JD with 4 wd loader mower low hrs York Co 717-382-4639

1 pair 3 yr old sorrel geldings, white manes green broke, acclimated and sound \$2300 for the pair 1619 Robert Fulton Hwy, Quarryville PA 17566 Lanc Co

1994 Ford 1120 tractor w/708 quick tatch loader 111hrs, Woods RM600 3pt hitch, finish mower 1995 Yamaha blaster Balt Co 410-343-1684

Jacobs ram 1 yr old, pygmy goat kids Lanc Co 717-394-3607

12x4" steel l beams, 18 29 ft long 5 14 5 ft long, black foam block insulation Chester Co 610-932-8348

Fisher snow plow 7ft power angle from Chevy S10, nice shape, works fine \$1000 Chester Co 610-399-1971

Tennessee walkers, exc trail and field trail, several to choose from, 100% sound Cold Springs Farm, after 5 p.m Wapwallopen Co. 717-379-3217

Lumber 4x4 4x6 3x5 12ft long also wheat straw Lanc Co 717-626-9767

Registered belgian mare 4 yr 17 2h, Conquerers and Constrico breeding good

lead horse, John Esh, 362 Osceola Mill Rd, Gordonville PA 17529.

Ford Galaxie 500 1972 351 w PS PB, auto, 4 dr, good shape, asking \$1500 Carroll Co. 410-848-5339.

Extra duty mobile hydraulic crane, 1 ton 54" reach 100 1/2" height extended 300# 96" reach 126 1/2" height \$1100. Lehigh Co. 610-767-9007

3pt 6F mower, IH A295 plow, IH 460 hicrop rough, cub disk rough, IH 140 3-16" rollover plow Bucks Co. 215-968-4808.

Ford F1000 farm dump truck \$750. Delaval style floor milker, 65 pound) \$425. Portable milker vacuum pump \$300 Susquehanna Co. 717-756-2764.

John Deere 750 with loader, weight box turf tires PS, 4x4 low hours \$9500 cash. Pike Co 717-588-6350.

Bench grinder, 6" heavy duty industrial, American made, with two grinding wheels, good cond \$95 Berks Co. 610-488-1476.

1976 Ford 6600 dp remote power adjust wheels, new rubber 2800 hrs, tractor is like new \$9500 Peter New Haven Co. 203-393-0782.

Cub Cadet 982 20hp, hydro, hydraulic lift, 50in mower, new snowblower \$3500. Dauphin Co. 717-329-9848

1 hog slat section 4x10' 25 10' long single slats, can be cut shorter 1/3 new price Lebanon Co 717-865-4932

14x70 and 18x70 silo, both Lancaster brand and Van Dale unloaders 14x18' also 1967 Camaro completely restored great shape Snyder Co. 717-694-3417

Cardboard boxes for sale, 19 1/2" long, 12 1/2" wide, 6" deep, \$25 each Gloucester Co 609-694-1082

Two morgan quarter horse cross, one gelding one mare 3 yrs old, rde, drive single/double After 9 Perry Co. 717-349-7903

Seven puppies, out of purebred Australian shep German shepherd both parents on premises, \$35, call after 8 p.m. Balto Co 410-374-5227

Storm front carriage, good cond, fiberglass box, \$12000. 12 volt lights Jonathan Lantz, 353A Musser School Rd, Gordonville PA 17529.

Case IH 600 forage blower, \$1500 357 NH hammer-mill, \$2000. Gehl 920 forage wagon 3 beater roof ta \$2000 Union Co 717-966-9893

Quarter horse 3 yr old mare 15 3 bay broke sire by deemers dee night not registered \$1200. Berks Co 610-944-6468.

Bandsaw 36" Scmu still in crate planers 13-24" 20" Rockwell never used, Newton boring horz 8" jointer, more Mont. Co 301-384-5376.

Steam cleaner with hot and cold pressure washer combined, mounted on small trailer with hitch, unit almost new. Montgomery Co 215-855-2980.

Donkeys miniature and standard 3 jacks and 2 jennys, very gentle \$300-700 Two with black noses. St Mary's Co. 301-475-8583.

40ft insulated truck trailer, good cond, near 178, Rt61, use on road, storage, farm produce storage, whatever, asking \$2000. Berks Co 610-926-3841.

1982 Bronco, 4x4, 302, 4 sp new insp, tires, paint \$3850 1989 Dodge shadow, auto, needs body work \$900 Mont. Co. 215-723-6496

John Deere 2510 gas tractor NF good over all cond \$6500. 1982 Chevrolet C20 diesel pickup good \$1850. Schuylkill Co 717-648-8075.

Rubber cow mats, good cond \$20 each Lanc. Co. 717-768-7705.

Valve grinder \$200. Power hacksaw \$150. Chain hoist \$100 Large vise \$100. 12x12"x8" oak 10.16 5 Bobcat tires wheels Northampton Co 610-865-4635

Pulsation chlorinator, model LD54SB, electronic metering pump, new, still in box, paid \$418 on sale, sell for \$299 Lebanon Co. 717-865-7440.

Clark forklift 6000 lb, 58 hundred hrs, need bigger one \$5800 4 yr old riding horse Crst. Lanc Co 717-786-3520.

2-28" Ford wheels \$150 2-30" Fordson wheels \$150 Outhouse two separated seats two doors for school/church \$200 Northd. Co 717-648-3872

Miller AC400 AMP DC mobile welder good con, no Sunday calls Lanc Co 717-656-8741

Pequea manure spreader, used on year very good cond \$2800 Leroy Stoltzfus, 225B Centerville Rd, Gordonville PA 17529 Lanc Co.

Electric water heater, oil furnace and water pump Steven Fisher, 96 Creamery Rd, Pequea PA 17565 Make offer. Lanc Co.

Oliver 525 combing with 13ft Hart Carter flex head and 2 row corn head, good cond \$1000 firm. Kent Co 302-284-4783

500 lb Fairbank platform scale, good shape \$75 Washable 46 wall paper \$2 a roll One sofa \$10 Lanc Co. 717-354-0616

Case 580 rubber stabilizers, exc \$250/pr Truck

transmissions RT906 \$100. 15 spd w/PTO \$200 Mounted 10'00x20 trailer caps \$20 each. Lebanon Co. 610-589-2274.

IHC 3 bottom trailer plow \$150 Farmall cub sickle bar mower \$250 Honda Elite 50 motor scuddler 125 miles \$600. After 6 p.m Morris Co. 908-766-5530.

IH 800 no till 4rn corn planter, with monitor, insecticide units, dry fertilizer, with openers, no Sunday calls. Wash. Co. 301-791-6963.

15kw generator PTO driven \$850. 489 New Holland haybine \$1500 Wrapped round bale mover fits front end loader. Huntingdon Co. 814-669-4879.

Oliver 770 N/F, Allis Chalmers, CAN/F, Farmall, 460 WF, Massey Harris 101 N/F, with snow plow, 3pt plows, all good cond Orange. Co. 914-457-1334.

Oliver 2 row corn planter exc shape and shed kept field ready call after 6 p.m 3pt hitch. Calvert Co 410-535-1971.

Used large Polydome calf hutches \$175 OBO Large boiler \$750 Wanted-EFM coal stoker, for parts Lebanon Co 717-949-3998.

AC WD45G NF motor rebuilt all new parts, new f tires, 60% r tires, new paint with 2 bottom mobord plow York Co. 717-292-4886.

Smedley hog feeders, JD 10' cultmulcher, NH 28 blower and pipe, round hay feeder Lanc Co. 717-665-4743

JD flat or round spoke rear wheels, 36" for B, broken hubs are OK, can use steel wheels Chester Co 610-869-2001

Karavan double snowmobile trailer with dump and spare tire very good cond, used three times titled shed kept Cumberland Co 717-776-4310

Tobacco shed 56x32 pine frame and boards 12 in wide slate roof clear gas pole light with 2 gal tank. Lanc. Co. 717-354-9935.

Market wagon, hydraulic brakes, exc cond, also maple dining set with hutch, good cond \$250 Northampton Co 610-588-3797

Nice dry corn fodder chopped with Summit Hill chopper \$60 ton. Elam Fisher, 2816 North Cherry Lane, Ronks PA 17562 Lanc. Co. 717-687-6817.

Quality angus bulls, calving ease with growth, positive carcass EPD sires, good dispositions yearlings and older bulls York Co 717-292-1547.

JD 24 blade disc new 20" blades \$550 Also 2 new IHC round galvanize fertilizer boxes complete Wellsville PA 717-432-4598.

Case Vac rowcrop 18 1/2 hp 4 cyl engine with 7ft sicklebar mower small trailer runs good \$1200 Mont Co. 610-666-0844

Delaval milk meter 10' Aerway propane heater, vented, all good cond, 14' Badger unloader, parts or repair \$300 Cumberland Co 717-776-6552

Pick 2 percheron mares out of five 3-12 yrs, \$1200-1600 all broke Marcus Stauffer, RD1, Box 399, Port Trevorton PA 17864

Air compressor roll about 3 5hp 11 gal Campbell Hausfeld 125 max PSI 120 volts, rarely use, vg cond \$185 Cumberland Co 717-763-1712

Two wheel trailer, good tire and iron needs wood 1st \$50 Sussex Co 201-948-3860

IH 1660 field tracker 30 5x32 3 cyl feeder reverser spec rotor hyd reel for and aft, rock trap, reel to ground ahc Snyder Co 717-658-6253

Mahoning
D outdoor
Furnaces



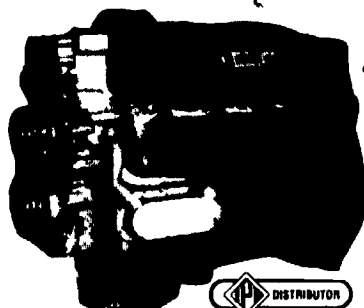
Take The Dirt And Danger Out of Burning Solid Fuels. "The Natural Way To Heat"

- Clean, Safe, Efficient Outdoor Furnaces To Fit Most Residential and Commercial Situations.
- Complete Design, Service and Installation For All Heating Systems.
- Over 25 Years Experience In Heating
- Customer Referral List Available

CALL FOR MORE INFORMATION 800-789-5068

RECON ENGINES
DIESEL PERFORMANCE SPECIALISTS
(717) 354-4801

Specializing In
Used Rebuilt And Exchange 3208 Caterpillar Engines



- SALES
- SERVICE
- PARTS

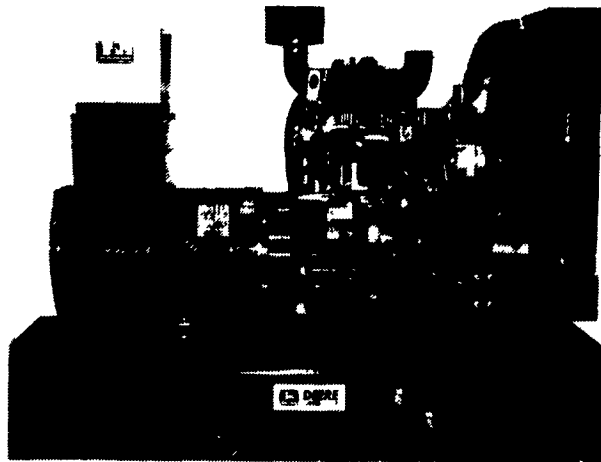
DIESEL POWER SUPPLY

DIESEL ENGINES - POWER UNITS
415 PETERS RD. GORDONVILLE, PA 17529

Misc, New-Used And Trade-In Diesel Engines

Cummins
SPECIALIZING IN
B&C SERIES

GENERATORS



MARTIN ELECTRIC PLANTS • Manufacturer of:
DIESEL, LP GAS, NATURAL GAS, PTO
Automatic & Manual Start Systems
USED UNITS ALSO AVAILABLE

Call Us For All Your Generator Needs!

MARTIN ELECTRIC PLANTS

280 Pleasant Valley Rd., Ephraim, PA 17622-8620
800-713-7968

Tel: 717-733-7968 Fax: 717-733-1981