

FOR SALE: Used desks, files, chairs, drafting table, blue print files, fireproof files, shelving etc. NOLT'S Ephrata, PA (717)859-1617.

OFFICE TRAILER, 10X55, new heater, new c/a, new windows and doors. Sacrifice \$5,000. Call anytime (610)353-9663

Onan generator, Ford industrial gas engine, 223 cu" 6 cylinder, 25EC/3R/316K, 25KW continuous, 31.25 KVA, 130 amps, 120/240 volts AC, 60 cycle 1 phase, 1800 RPMs, low hours, asking \$5,000 OBO. (610)847-5236.

PAYING UP TO \$2.50/sq.ft. for wide walk-smooth attic floor. We remove. Also paying \$.50-\$1.00 for pine and oak siding 1" & thicker. WANTED: Cypress walk boards. 800/765-3966.

Plasma Torch, 1/2", \$950. 717/354-3105.

Portable American circular mill, 4 head block, steel wheels, no power unit, WILL TRADE for smooth mouth mule or Wisconsin power unit. (609)869-4719.

Press Brake, 220 ton, 6', \$10,500. 717/354-3105.

Radial arm saws, 18", 20"; paint shakers; platform scales; 500lb anvil. 609/232-7686 after 5.

Silver stitch stapler, large unit with pedestal, \$750. 717-432-3235.

Stainless Steel Tanks 2500-500, 100hp, electric motors, motorized valves, air driven diaphragm pumps. Some electrical equipment. (908)218-9191.

Toy Truck, farm toy, racing collectible show, 2/23, 8:30am-2pm. Adults \$2.50, kids free. E. Greenville Fire Hall, East Greenville, PA. 70 tables. 15 minutes from Exit 32 PA Turnpike. For info- Bob Schantz, 215/679-2838.

V-4 Wisc. engine, no clutch \$125. Lanc. Co. (717)367-0321 or (717)367-6026 LV message.

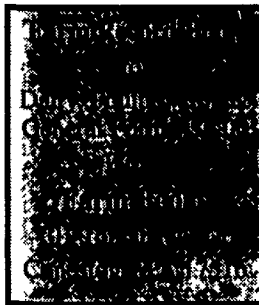
Valby Farni PTO chipper, CH231X, w/hydraulic feed 9" capacity, less than 100 hrs, 3 extra sets of blades, excellent condition, new \$10,095 Sell \$4,750. Contact Joseph Smith, (609)589-3954.

WANTED: Used tools and machinery. Buy, Sell, Trade, Consign or Finder. B.J. TOOL & SUPPLY, RT 422W, Myerstown, PA. 1-800-772-9845.

YOUR BEST BLADE SHAVE EVER! ALLSHAVE gel. Call 1-800-752-9034, 717/541-1804 GUARANTEED.



As soon as your ice melts call us
Koi-R-Us Fish Farm
215-536-6076
But call now for price list!



32a ANTIQUES

JD 720, square WF, 3pt, diesel, pony start, sharp! \$4900 717-679-2820.

John Deere 1943-B spokes, new tires, \$2,100 or BO. Can deliver within reason. (540)785-0470 evenings.

Small Collection of JD tractors, all excellent condition: Models B, BR, G, L, LA, 40, M, H. Also parts. Serious buyers only. 201/579-3595.

WANTED: crank up disc phonographs any condition and parts. Beginner collector. Call after 5pm, (610)469-0452.

1940 Farmall A, excellent condition, w/ground & snow blade, new tires; 1942 Farmall BN, good condition, needs generator. \$1500/each. 717/776-4030.

1957 Int. S160 truck w/SD264 engine, 172" wheel base, 5-spd direct, 3-spd Watson, aux. trans., 16x8 platform, ideal for show or haul your antiques. 516/727-3789 after 5pm.

1967 Ford 2-door hardtop, red, restored, nice classic 2 condition. Lancaster County, (717)626-8257.

55 to 57 Chevy rears drum to drum. 58 to 61 Chevy rear same \$250 each. 57 Chevy powerpack engine #T328FC \$500. 60 Chevy 283 complete w/GR trans \$400. Two 4-barrel manifold w/crabs and progressive linkage \$600. (410)867-4109.

Cast Iron Seat Collection for sale, all excellent condition. Some not in book. Approx. 40 seats. Serious buyers only. 201/579-3595.

JD 290 antique corn planter on rubber, \$150 OBO. Dauphin County, (717)692-4648.

JD 420 crawler/loader, runs good, \$4,200. JD MC crawler w/blade, does not run. \$2,500. (412)945-5324.

JD 420W Serial #108235, 3pt, 5 speed, sharp! \$4300. 717-679-2820.

33 RECREATIONAL VEHICLES

1988 Polaris 400 Indy, new cond; 1980 TXL Polaris 340, ex. cond. (717)426-3135

1992 Left-over Innsbruck, Gulf Stream travel trailer, 28', fully loaded, central air, sway bars & equalizer hitch included. \$9000. 717/336-7829.

WANTED: Honda 3 wheelers, any size, any year, any condition. Cash paid! 610-970-2399

34 AUTOS

1973 Pontiac Lemans, 4 door, 88,700 original miles, runs good, \$500. 717-626-4224.

1978 Chevy 4x4, 3/4 ton, 350, V8, 4-speed, new body and paint, runs good w/or without cap, \$3500 OBO. 1978 Chevy 1/2 ton, 250, 6-cylinder, 3-speed, runs, \$300 OBO. 717-786-0725.

1982 Chevy Blazer 4x4, V8, auto, PS, PB, inspected to 3/98, very good condition. \$2495. 717/867-1201.

'86 Volvo, 740GL 4-door sedan, perfect body & interior, needs turbo, \$2800 OBO. 610/970-5884.

CHEVY'S, FORD'S, etc. Cars and trucks. Over 300 vehicles. Every Monday 6:30PM. PUBLIC AND DEALERS. YORK SPRINGS PUBLIC AUTO AUCTION, RT 15, York Springs, PA 1-800-222-2038.

(JEEP) '88 Suzuki Samari, 4x4, hardtop, 80K miles, 5spd, excellent, \$2,500. York, after 4pm, (717)428-2874.

SEIZED CARS from \$175. Porsches, Cadillacs, Chevys, BMW's, Corvettes. Also Jeeps, 4WD's. Your area. Toll free 800/218-9000 Ext. A-4687 for current listings.

See Our Ad In Today's Auction Section
Over 1000 Vehicles Auctioned Weekly

35 TRUCKS & TRAILERS

10' Eby aluminum cattle body, roll door, ramp door, w/SD264 engine, 172" wheel base, 5-spd direct, 3-spd Watson, aux. trans., 16x8 platform, ideal for show or haul your antiques. 516/727-3789 after 5pm.

10' stake bed w/tool boxes & ladder rack, complete w/ lights & bumper, red, excellent condition, \$675. 717-733-2873

12' 3,000 lb. MGS trailer, 70"W deck inside, ramp. (717)768-7897.

1954 Ford F750 tanker, 1800 gal., V8, 5-spd, runs, \$500. 717/664-4707.

1960 B67 Mack tractor, single axle. 1946 Chevy 4-door car for sale. 1949 Dodge ton and a half truck, 18,000 miles on rebuilt excellent motor. Leave message, (908)359-3868.

1965 GMC 4000, 16' grain dump with hoist, needs engine, \$950. 610-868-3742.

1966 IH 1600 truck, 6 cyl., 4 speed, good condition. 717-788-1486.

1967 Mack R model, 33,000 GVW, w/1982 9 ton Eager-Beaver trailer, both excellent shape, MUST SELL! \$11,900. (610)584-2772.

1971 LN750 Bucket Truck, 330 gas, auto trans, air brakes, height 30', \$3200; 1972 GMC step van 12', V8 automatic, \$2000; Tailgate lift for pickup truck, \$450. 215/340-2244, 215/441-5863, ask for Frank.

1972 Ford N-600, like new utility body, excellent condition, "A Welders Dream" \$5000 OBO. 717-265-2914.

1973 LTS 9000 tri-axle, 290 Cummins, Jake, 9 speed, overdrive, w/19' Thiele nice aluminum dump, 74" sides, \$10,000. 717-529-2196.

1973 White Freightliner, Cummins engine 335HP, good engine, good trans., needs clutch, parts truck. \$900. (717)530-8089

1975 Summit 29' alum. dump trailer, good cond., 22" rubber. Call (410)877-9889 or (410)877-0773

1978 Ford F150 XLT Ranger, red and white, tutone, factory rebuilt, 351m w/16,500 miles, 4-speed, no air, other new parts, some rust, good tires, inspected till 2/97, \$2500 OBO. 3/4 ton red truck bed trailer, \$150 OBO. 717-426-2805 leave message Columbia, Lanc.

1978 Kenworth W900A, BC290, 15-speed, 4.33R, K.W. 4-sprag w/wetline, runs good, 480,000 miles, \$5500. 609-259-3094.

1979 Chevy 10,000 GVW, enclosed body, side and roll-up rear doors, 350, V8, auto, trans, newer inspection, good condition, \$2200 OBO. 215-453-7567.

1980 Kenworth COE aerodyne, 375 Cat, air-ride, PS, new paint, looks and runs very good, \$4,500 OBO. (717)992-9287.

1980 Mack cab over, 300+, 10spd, Neway air ride, good cond., \$3800. (717)582-2348 After 6pm

1981 Mack F model, 300 Cummins, big Cam w/ Jake, 9-speed trans, runs good, \$5500. 610-921-1971

1982 GMC 5000, V8, 4-speed, 16,000 GVW, 14' flatbed, 24K, AM/FM, \$7000. 717-656-3081.

1983 Ford LT 9000 tri-axle 16' steel dump, trans. ALL8LL, engine 240 Cummins, tagged for 73,280 GVW. (717)755-2911 Ask for Joe Sheetz or Bill Martz

1983 Ford F150 4x4, V8, auto, PS, PB, inspected to 11/97, 55,000 miles on rebuilt engine, \$2995. 717/867-1201.

1983 MS200 Mack, cab and chassis, 5 speed, P/S, 192wb, 170ca, new paint, new brakes, 11R22.5 steel Budds, 179,000 miles, excellent condition, \$6,900. No Sunday calls. (717)463-9200.

1984 F-350, 6.9 diesel, 8' flatbed, parts or fix up. \$1200. (717)933-4442

1984 IH dump, 7.3 diesel, 5+2, w/11' bed, good shape, holds 300 bu. grain, \$750. (717)437-2123.

1985 GMC 7000, 26,000 GVW, no CDL required, new hoist, & 17' bed, Class III hitch, 11-22.5 tires, hyd. brakes, gas, 94K, very good condition, \$7200. 717-786-7902 leave message.

1985 GMC dump truck, new tires, brakes and inspection, single axle, 26,000 GVW, \$8,000. (717)864-3350 or (717)864-3202.

1985 Int. 24' Jerr-Dan rollback w/rear hydraulic stabilizer, DT466 diesel, new PA inspection. Nussbaum's (717)684-0189.

1985 Peterbilt Tractor, good condition, \$12,000 OBO. 610/967-2181.

1986 Ditch Witch T8 trencher trailer, 8300 GVW, inspected, ready to use! \$3900. Toll free 1/888/682-2215.

1986 Ford F250 4x4, 6.9 liter diesel, 4-spd, good condition, \$7000. 301/845-8361.

1987 Chevy W4 cab over truck, 4cyl. Isuzu diesel, 5 spd, 180,000 miles, 12' box, 11,050 GVW, \$6,500. (717)235-5259

1987 Ford LTL tractor w/42" sleeper, engine CAT, 400HP, transmission 13Spd, color black, very good cond. (717)755-2911 Ask for Joe Sheetz or Bill Martz

1987 Ford mobil home transporter, new tires, ready to work, \$18,900 OBO. 412-523-9272.

1987 GMC 7500 series single axle dump w/frame for plow, engine, gas, V-8, 366HP, transmission, 5spd w/2spd axle, GVW, 33,200, 10' steel dump body, color red, under 50,000 mi. (717)755-2911 Ask for Joe Sheetz or Bill Martz

1987 Mack MS 250, turbo charged diesel, 72,000 mi, 24' grove rollback, hyd winch, 32,000 GVW, air brakes. Call (410)877-9889

1988 Chevy 30 Custom Deluxe w/8' JerrDan dump, 454hp, 4-speed trans, 11000 GVW, low miles, red, good condition. 717-393-3633.

1988 Chevy blazer, 4X4, silverado, 350, a/c, AT, Blaupunkt stereo, tow package, new inspection, Goodyear AT, mint cond. \$7,400. (610)926-0262

1988 Freightliner conventional w/sit-in bunk, excellent 350hp big cam Cummins w/Jake, 9-spd, 355 rears, 22.5 tires on Budds, aluminum fronts, PS Must Sell. \$12,900. 717/538-2324.

1986 Eager Beaver tag-along trailer, BODOW, nice. (717)752-2837.

1989 GMC Topkick, dependable, good condition, runs well, \$15,000 OBO. 610/967-2181.

1989 Iveco rollback, 5.9 liter, turbo diesel, 15 1/2' bed, 14,800 GVW, super clean, \$9850. (814)398-8451

1989 Iveco, 12' van, 130 turbo diesel, 16,900 GVW, 5-speed. 717-393-3633.

1990 Ford F150, heavy duty, 4x2, V8, 350, XLT, fully loaded, bedliner, new tires, 44,000 miles, excellent condition, \$10,600. 610-488-7060.

1991 Isuzu NPR Diesel, 125,000 miles, regularly serviced & good condition, P/S, P/B, 14' heated cargo area, fully shelved, 11,000 lb. GVW, no CDL needed. (610)286-6590.

1992 Big Valley 3 horse slant trailer for sale. \$3500. (814)378-8285

1992 GMC 2500, 4x4, extended cab, trailing package, 454 engine, excellent condition, \$13,500. 717-653-1728.

1992 Mitsubishi FR417 w/18' Morgan Van, 23,000 GVW, 200hp, 5-speed. 717-393-3633.

1993 Ford F350 XLT, 7.3D, post driving truck, Kiwi built custom fit equipment, asking \$26,000. 610-644-3762 Stephen Fanelli

1993 Trans 45' walking floor trailer, 11.6' side height, aluminum wheels, good condition. 717-664-2894.

1995 F250, 4WD, HD-XL package, trailer tow package, 7 1/2' snowplow. 410-374-1261.

(2) 1989 C-60 Chevy hot shots, 48X96 flatbeds, \$9500/ea.; 1988 F-700 Ford hot shot, 48X96 drop deck, \$10,000; 48X96 drop deck, \$4500. (717)248-3873 (610)670-1026

(2) 1993 Stainless Steel Utility Trailers, 48'X96" w/ Thermo King Units. (800)345-5808.

21' Swartz rollback off '82 Int. tandem, wood floor, side pockets, good condition. (717)752-2837.

36' Freuhauf flat trailer w/ sides and bows. Berks Co. 610-562-4133.

74 KW conventional 270 CAT, 13 spd., 38,000lb rears, 411 ratio, wetline, inspected, very good cond, wheel base 150", 390,000 miles. BO. (610)987-6348

'76 Int. S/A dump, 549, 5+2, 10' bed, \$2250; '86 18' Ref. w/ThermoKing roll-up door/side door, \$2500. 717-522-0364 after 6pm.

'76 Kenworth W900 for parts, 1693 CAT, 13-speed, 4.11R, all low miles, new power steering box and pump. 302-674-8761.

'77 Freightliner COE, excellent Cummins engine, 9-spd Rockwell rears, 11x24.5 tires, good solid work truck w/new batteries, \$3750. 717/538-2324.

'78 Ford F800 w/Swenson V-Box material spreader, snowplow frame & list, good condition, \$3500. 908/359-5934.

'78 GMC pickup converted from diesel to professionally rebuilt 307 Olds and 400 turbo \$2,650. Mount Joy, 8-6, Mon-Fri, (717)653-5396.

'79 9000 detroit dump body. (610)446-4242


'86 Dodge Royale SE B150 short whl base, 5 pass., 318 auto, PS, PB, air, AM-FM cassette, good condition, \$3,400. 717-733-2873

'87 Nissan 4x4, 5-spd, ext. cab, PST, 127K, \$3500. 717/374-4216.


26' gooseneck trailer, 12,000# GVW, single axle dolly, vacuum or hydraulic brakes, mini 5th wheel attached, \$1200. 717-336-8218 after 6pm.

MAGNETIC SIGNS
12" X 24" 2 FOR \$49
1-800-503-SIGN


For Sale:
1973 Gilmore Dump
29' Frame 28' Box
11R22.5 Rubber
New Brakes- Fresh Paint
Location: Bethel, Berks County, PA
Call
(717) 933-8686
7:00 am - 5:00 pm



1993 MACK CH613 400 HP, 10 SP, 60" DBL BUNK, 10 ALUN WHEELS, NEW TIRES, JAKE, AIR RIDE
LOW MILES, EXTRA NICE
\$53,000 OBO
1-800-332-1759



1994 Dodge 3500 4x4, 5 Speed, Cummins 5.9 Turbo Diesel, Laramie SLT, All Options, 5th Wheel Setup, 57,000 Miles, \$21,400
K.T. Graham Inc.
Rte. 272 So., Akron, PA
717-859-3168



1986 Ford Tandem Truck and 1984 Hill Airslide Lime Trailer
Ready To Work
\$45,000 OBO
717/354-5310


CASH FOR USED DIESEL TRUCKS

WE NEED 1/2 TON TO ONE TON:

- FORD DIESELS
- SUPERCABS
- CREW CABS
- DODGE CUMMINGS
- 2WD or 4x4
- DUALIES
- DUMPS
- UTILITY BODY
- FLAT BEDS
- CAB & CHASSIS
- SUPER DUTIES

LOW MILEAGE ONLY PLEASE

Before you sell or trade your diesel in somewhere else for LESS.
CALL US!
We Pay More for Used Diesel Trucks Than Anyone.

717-949-2000 **TRY US!**
or
610-678-3243 
Ask for Smokey or Kay **KELLER BROS.**

RD 7, Box 405
Lebanon, PA
17042