

OPEN HOUSE

February 17 - 22ND, 1997



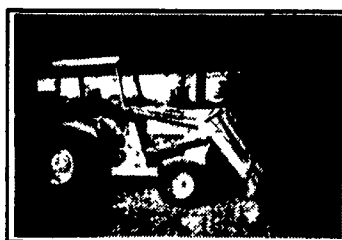
John Deere 2440 Tractor
w/ 146 Loader, 1980



Ford 4630 Tractor
1992, 995 Hours, 8x2 Transmission



Ford A62 Loader
1 1/2 Cu. Yd. Bucket, 1981



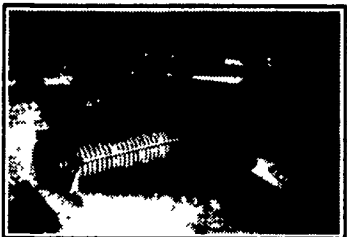
Ford 445C Tractor Loader
1989 Torque Converter



Ford 6640 S Tractor
1992, 1 Remote, 300 Hours



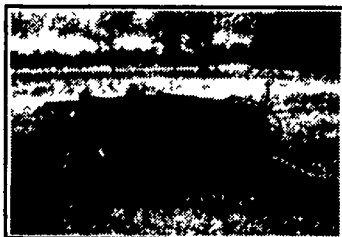
N.H. 415 Discbine
1000 RPM, 1994, Swivel Hitch



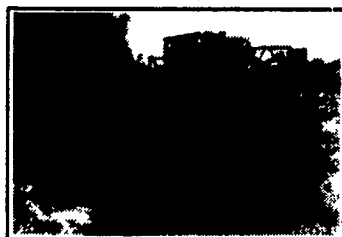
N.H. 311 Baler
1984 w/ 70 Thrower,
Hydraulic Directional



N.H. 650 Round Baler
1994 Wide Pickup, Auto-Wrap



Case 770 12' Offset Disk
25" Disks, Real Sharp
\$6,500



N.H. L783 Skid Steer Loader
1990, Boom Hydraulic, 2650 Hours

USED EQUIPMENT INVENTORY

TRACTORS & LOADERS

(2) Ford 1520 23 HP 4WD
Ford 641 w/Loader
Ford 841 Gas
Ford 4630 55 HP
Ford 6610 II, 70 HP
Ford 6610, 72 HP
(2) Ford 6640S, 76 HP
Ford 7600, 84 HP
Ford 7610, 86 HP
Ford 7710 2WD, 86 HP
Ford 8240 SLE, 2WD, Cab, 96 HP
Ford 345 C w/Loader
Ford 445 w/Loader
Ford 777 B Loader Attachment
Ford A62 Loader
NH L555 Deluxe Skid Steer
NH L783 Skid Steer
(3) NH L785 Skid Steer
AC 6080 w/Loader
Case 310 TLB
Cub Cadet 1572 w/80" Mower 15 HP
IH 2424 2WD, Gas
IH 3200 B Skid Steer
JD 1010 WFE, Gas, 35HP
JD 2440 w/Loader, 80 HP
JD 4230, 100 HP
JD F912, Frt Cut Mower w/80" Deck
Koehring Forklift, 22' Lift Side Shift
Kramer 412E Loader w/Bucket & Forks

Kubota G1900S w/80" Mower, 18 HP
Kubota G5200 w/48" Mower, 14 HP
MF 2135 Gas, 32 HP
Mitsubishi 650G Tractor w/ Front Blade
Yale Forklift, 5000 Lb Lift
Yanmar 187D w/Frt Blade 4WD

HAY & FORAGE

NH 1495 Haybine, Gas, Hydro
NH 1034 Bale Wagon
(2) NH 276 Baler
NH 3RN w/Auger Base & Hay Head
NH 310 Baler
NH 311 Baler w/70 Thrower
NH 70 Thrower
NH 320 Baler w/58 Thrower
NH 485 Disc Mower
(2) NH 488 Haybine
NH 495 Haybine
(2) NH 489 Haybine
NH 492 Haybine
NH 575 Baler w/1/4 Turn Chute
NH 650 Round Baler
NH 770 Harvester 2RN & WPU
NH 849 Round Baler
NH 890 Harvester w/3RN Head
NH 30 Blower
NH 289 Baler w/Thrower
NH 939 N4 Corn Head
NH 144 Inverter
Case IH 8540 Baler *Reduced*

Deutz 360 Rake
Deutz KH500 Tedder
Hesston 1010 Hydroswing Haybine
Hesston 1014 Hydroswing Haybine
MC Rotary Scythe
NI Rake
NI 404 Wheel Rake
NI 4160 Rake w/Dolly Wheel

MISCELLANEOUS

BH 257 7' Rotary Mower
BH 2615 15' Rotary Mower
BH 307 7' Rotary Mower
BH ATH 600 5' Finish Mower
BH SQ84 7' Rotary Mower
BH 109 Rotary Mower
(2) Brillion 12' Packer w/ (2) 5' Pups
Case IH 12' Offset Disk
Dynavet Straw Chopper, 8HP Honda
(2) Ford 3 Bottom Plow
Ford 4 Row Cultivator
IH 45 16' Vibra Chisel
IH 550 5 Bottom Plow
IH 1300 Sickle Bar Mower
(2) JD 4 Bottom Plow
JD 15' Cultimulcher
NH 165 Spreader w/Endgate
NH 520 Spreader w/Endgate
NH 680 Spreader w/Endgate
Wagner Frt Blade
Woods D80 Rotary Mower
Woods RM90 Finish Mower

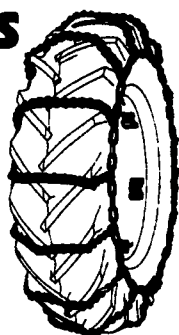


Specials listed on this ad are
"CASH" prices as quoted. ALL other parts
- 10% off "CASH" purchases during the
Open House Week -
February 17-22, 1997 "ONLY"

Size	Price
8.3-24	138.02
9.5-16	148.98
9.5-24	149.83
9.5-28; 11.2-24	163.15
9.5-32; 11.2-28	185.22
11.2-34	245.29
11.2-38	279.00
13.6-16	168.88
12.4-24	187.96
12.4-28; 13.6-24; 13.6-26	223.18
13.6-28; 14.9-24	214.34
14.9-26; 15.5-28; 13.00-24	252.63
14.9-28; 12.4-36; 14.00-24	252.63
12.4-38; 13.9-36; 14.9-30	279.32
12.4-40; 13.6-36; 13.6-38	279.32
15.5-38	315.83
14.9-38	314.44
16.9-24; 17.5-24; 17.5L-24	261.70
16.9-26; 17.5-25	261.70
16.9-28	293.95
16.9-30	293.95
16.9-34; 15.5-38	315.83
16.9-38	357.06

TRACTION CHAINS

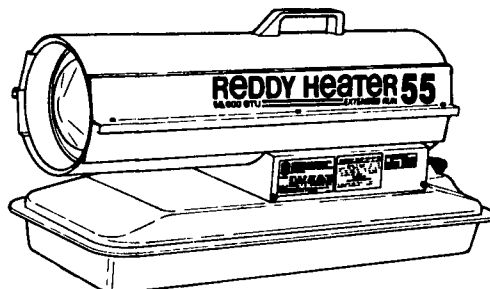
Go
All
Winter
Long!



18.4-26	408.02
18.4-28; 21L-24	407.05
18.4-30; 20.5-25	419.09
18.4-34	448.54
18.4-38	528.76
20.8-38	540.00

* Price per set

REDDY HEATERS



KEROSENE

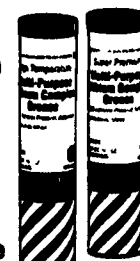
35,000 BTU	DER35BDS	\$158.82
55,000 BTU	DER55DS	\$191.91
70,000 BTU	DER70CTDS	\$211.76
110,000 BTU	DER110DS	\$284.56
150,000 BTU	DER150BDS	\$344.11

LP GAS

35,000 BTU	DERLP35DS	\$158.82
50,000 BTU	DERLP50DS	\$187.93

NEW HOLLAND GREASE

99¢ a tube



New Holland Premium ENGINE OIL



15-40 ENGINE	30W ENGINE
Qt Case \$16.66	2.5 Gal. \$12.49
2.5 Gal. \$13.09	55 Gal. Drum \$238.95
5 Gal. \$25.99	
55 Gal. Drum \$247.95	

SAFEMARK	PRICE
9000 Natural	\$21.95
7200 Natural	\$21.95
16000 Natural	\$23.95
4000 Plastic	\$21.35
7200 Plastic	\$19.90
9000 Plastic	\$19.90
9600 Plastic	\$22.96
20000 Plastic	\$19.05

QUALITY SKID STEER TIRES	PRICE
27/850 - 15/6 Ply	\$62.00
27/1050 - 15/6 Ply	\$78.00
1000 - 16 5/8 Ply	\$75.00
12 - 16.5/8 Ply	\$105.00

HELP YOU GET MORE DONE!

FRONT TRACTOR TIRES	PRICE
400 - 19/4 FT Tires	\$45.00 ea.
600 - 16/6 FT Tires	\$44.00 ea.
750 - 16/6 FT Tires	\$66.55 ea.

FENDER MOUNT AM/FM RADIO w/ Cassette Player 9624252ODS	\$143 ¹⁵
ROOF MOUNT RADIO 9624521DS	\$143 ⁷⁵

New Holland 134 HYDRAULIC OIL	PRICE
Gallon	\$5.69
2.5 Gal.	\$13.74
5 Gal.	\$25.54
55 Gal. Drum	\$245.95

ROLLER CHAIN	PRICE
RC35	\$13.49
RC40	\$11.87
RC41	\$10.44
RC50	\$15.38
RC60	\$18.22
RC60H	\$27.45
RC80	\$37.87
RC2040	\$10.29
RC2050	\$13.90
RC2080	\$16.23

BATTERIES	PRICE
F150 - for (Diesel tractors)	\$108. ⁰⁰
F120 - for (Gas tractors)	\$89. ⁰⁰

NEW 16 GRAIN TESTER	PRICE
FM08015DS	\$210. ⁰⁰

NEW HAY TESTER	PRICE
FM07101DS	\$168. ⁰¹

STARTING FLUID	PRICE
7.502	Reg. \$1.64
Sale \$1. ³⁵	
ANTIFREEZE	
1 Gal.	Reg. 6.25
Sale \$4. ⁹⁵	

AG INDUSTRIAL INC.