

DILLER EQUIPMENT

800-640-4448

Chambersburg, PA
Specializing In Truck Tankers

Complete Tankers



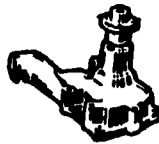
Customized Tanks To Fit Your Truck and Your Needs

- 1500 - 7000 Gallons
- Rugged Steel Fenders
- Optional Fan Locations
- Matching Colors
- 1/4" Steel Tanks
- Large Lid Type Hopper
- Epoxy Coatings Inside & Out

Spring Garden Repair



Isaac S. Stoltzfus
145 Spring Garden Road
Kinzers, PA 17535



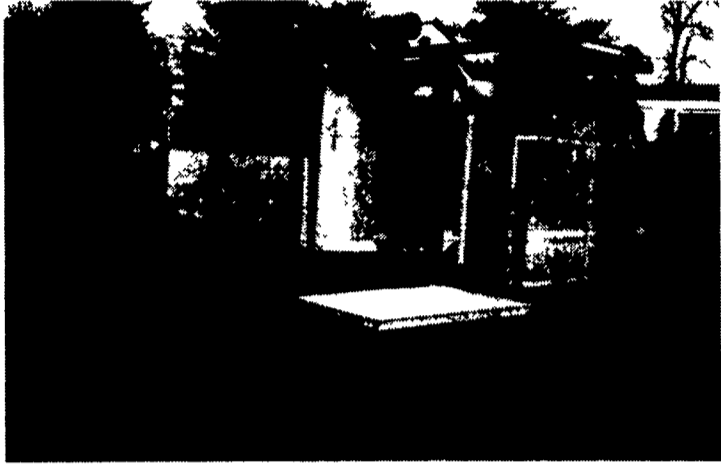
Gas & Diesel Engine Rebuilding
Cast & Aluminum Head Rebuilding & Welding
Block Boring & Sleaving
Flywheel Grinding
Engine Parts
Tractor Pistons & Sleeve Kits
Rebuilt Tractor Heads
New & Rebuilt Water Pumps



IH 544, Gas
Hydro, 3 pt., PTO, ideal loader tractor
\$4,600
Loader Available

Financing & Trucking Available
410-833-9091

MASTER WRAP BALE WRAPPER



- Self-contained with motor to be horse drawn or PTO tractor powered
- Handles round bales, large or small square bales
- Available with steel or rubber wheels

CALL FOR INFO ON SPECIAL WINTER PRICING!

Manufactured By:

MILLERS WELDING & REPAIR

- Industrial and Farm Equip. Repair • Stainless & Aluminum Welding
- Custom Fabrication to Your Specs

54 Christiana Pike, Christiana, PA 17509 • 610-593-6112

TRACTORS

- 1845 Case diesel skid loader, new rubber
- JD 40 Crawler w/hilift loader
- MF 1085 die. ~~SOLD~~ rubber
- MF 165 diesel w/loader
- MF 245 diesel w/quick tach loader
- MF 150 w/ new paint & rubber, overhauled
- MF 50 gas, nice running tractor
- Ferguson 40, gas, nice running, new paint
- MF 35 diesel tractor
- MF 846 loader, quick-tach, fits MF 398

EQUIPMENT

- New 6' Lorenz snowblower, 3 pth
- Bush Hog TM 6, 6' finish mower
- NH 489 haybine
- NH 514 Manure spreader w/tailgate & sides
- Glenco 10 tooth trail chisel plow
- MF 880 hydraulic reset plow, 5x16
- MF 345 3 pt. ~~SOLD~~ spring reset plow
- Glenco field cultivators 10 1/2 ft and 13'
- Cultpackers: 12', 14' and different sizes
- Used Brillion cultipacker and cultimulcher parts
- Gravity box and gear
- 2 & 3 bottom 3 pt. plows
- Packer pups
- New gates & hay feeders

Special
New Horst
Running Gears
• 8 Ton Gear
for \$650
• 10 Ton Gear
for \$750
• 12 Ton for
\$1,170

New Arrival
for Parts MF 3090

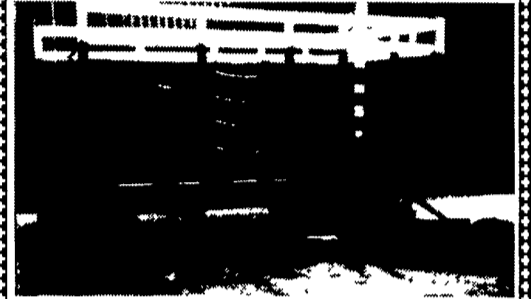
- MF Tractor parts Dismantling 20, 30, 35, 40, 50, 65, 85, 90, 135, 150, 165, 175, 178, 180, 205x4, 265, 283, 285, 399 4WD, 1080, 1085, 1100, 1130, 1105, 1135, 1150, 1155, 2745, 2805, 3680, MH 22, 44.

NOLT'S EQUIPMENT

403 Centerville Rd., Newville, PA 17241
off 81 exit 11, 2 miles N on 233

(717) 776-6242 No Sunday Calls
No Out-Of-State Personal Checks We Ship UPS

February Special on Bale Throwing Bodies



- 18'Lx9 1/2'Wx7 1/2' H Painted, 86"W, 8 ton G adj. tong, no tires \$1,320
- 18'Lx8'Wx7 1/2'H painted.....\$660
- 16'Lx8'Wx7'H painted.....\$560
- 18' Oak Bed, painted.....\$280
- 16' Oak Bed, painted.....\$220
- 16' Oak Bed, 14" popular sides, painted..\$350
- 8-ton gear, 86" track. adj. tong.....\$595
- 8-ton gear, 74" track adj. tong.....\$560
- 6-ton grain head carrier.....\$850
- 6-ton gear, 72", 5 1/2" steel wheels.....\$635
- New and used tires.....CALL

Ivan, Noah and Ammon Hoover
7 a.m. to 7 p.m. 717-733-6825

New Owners

We're Back!

BADGER

Call Us, We Never Quit!!

Badger & Silo-Matic Parts and Service



Show-Ease Stall Co.

573 Willow Road, Lancaster, PA
Ph. 717-299-2536 • Fax 717-299-1074

