



FEBRUARY 3-9, 1997

NEW MOON, FEB. 7.

**SHIP REPAIRS IN ORDER**

According to the ancients, the fourth of February is considered an auspicious day for the repair of ships. In case you haven't got a good wooden ship to repair, you can always resort to the next best thing — reading about them. Some of the classic possibilities include Robert Louis Stevenson's *Treasure Island*, Jack London's *The Sea Wolf*, Joseph Conrad's *Lord Jim*, and Rudyard Kipling's *Captains Courageous*. If you want a whole string of sea yarns by a single author, launch yourself on the novels of Patrick O'Brian. But reader beware! Once you get hooked on O'Brian's seafaring adventures, you may never surface for air!



Any book worth reading by children is also worth reading by grown-ups. — Arthur Ransome

**TIP OF THE WEEK**

Always keep a book with you in the car, in case of unplanned delays.

**CREAMED CRAB**

- 4 ounces cream cheese, softened
- 1/2 cup cream, divided
- 1-1/2 tablespoons butter
- 2 teaspoons flour
- 3/4 cup milk
- 1/2 teaspoon salt
- pinch of cayenne
- 1 pound flaked, cooked crabmeat (fresh or frozen)
- 2 large egg yolks



cream. Set aside. Melt butter and stir in flour, then slowly stir in milk. Cook over low heat, stirring until thick; then remove from heat. Add seasonings, cream cheese mixture, and crabmeat. Beat egg yolks with remaining cream, then mix with the crabmeat. Heat briefly but do not allow to boil. Serve immediately over rice or toast.

Makes 4 servings.

*The OLD FARMER'S WEATHER PROVERBS*



When the Moon runs low (Feb. 4, this month), expect warm weather.

Hawks flying high means a clear sky; when they fly low, prepare for a blow.

North and south (wind), the sign of drought, east and west, the sign of blast.

**OK City Feeder Cattle**

OKLAHOMA CITY, OK  
JANUARY 29, 1997

Compared to last Monday: Feeder steers and heifers 1.00 lower after recovering half of early losses. Calves and stockers firm. Feeder demand moderate early, good after noon. Most feedlots trying to bring cattle more in line with projected slaughter market and higher cost of gains as winter weather takes a toll on feedlot performance. Demand remains very good for stockers and calves despite -20 degree wind chill. Quality of supply plain thru attractive, mostly average. Weigh-ups gaunt to average. Slaughter cows 1.50-3.00 higher. Slaughter bulls 1.50 higher. Packer demand very good for lighter numbers as cow run begins the seasonal decline. Total of 385 cows and bulls sold with 65 percent going to packers. Receipts this week 14,300; last week 15,585; last year 10,756. Supply consisted of 72 percent yearlings over 600 lbs; 25 percent calves under 600 lbs; 3 percent cows and bulls. Prices follow with weighted average weight and price in parenthesis. Feeder Steers: Medium and Large 1 350-400 lbs (374 lbs) 85.50-90.00 (87.90); 400-500 lbs (450 lbs) 77.00-84.25 (81.20); 500-550 lbs (529 lbs) 75.00-80.50 (77.49); 550-600 lbs (565 lbs) 70.50-78.50 (76.22); 600-700 lbs (650 lbs) 69.00-72.50 (70.98); 700-800 lbs (750 lbs) 68.00-72.00 (69.76); 800-850 lbs (816 lbs) 66.50-72.00 (69.38); 850-900 lbs (870 lbs) 65.75-70.00 (67.11); 900-1000 lbs (950 lbs) 62.00-66.50 (64.82); 1050 lbs 64.00. Holstein Steers: Large 2: 445 lbs 48.00; 550 lbs 49.00; 640 lbs 50.00. Feeder Heifers: Medium and Large 1 350-400 lbs (368 lbs) 64.50-69.25 (67.46); 400-500 lbs (450 lbs) 64.50-70.00 (67.71); 500-600 lbs (550 lbs) 63.75-66.75 (65.55); 600-700 lbs (650 lbs) 64.25-66.75 (65.24); 700-800 lbs (750 lbs) 63.50-66.50 (65.34); 800-900 lbs (850 lbs) 62.00-65.25 (63.27); 930 lbs 61.75. Slaughter Cows: Average dressing: Cutters 30.00-32.00, Utilities 34.00-37.50, over 1300 lbs 35.50-38.25; high dressing: Cutters 33.00-35.00, Utilities 35.50-38.50, indiv 40.00; low dressing: Cutters 26.00-29.50, Utilities 30.50-32.75. Canner and low Culler over 800 lbs 25.00-28.50, light weights 22.00-25.75. Estimated dressed cost at Oklahoma National Stockyards: Cutters 68.25; Boners 72.40; Breakers 69.25; Cannors 64.85. Bulls 73.90. Slaughter Bulls: Yield Grade 1 1350-2400 lbs average dressing 40.00-42.50; high dressing 43.00-46.50, high dressing/high boning 45.50-47.50; low dressing 35.50-37.50.

63.50-66.50 (65.34); 800-900 lbs (850 lbs) 62.00-65.25 (63.27); 930 lbs 61.75. Slaughter Cows: Average dressing: Cutters 30.00-32.00, Utilities 34.00-37.50, over 1300 lbs 35.50-38.25; high dressing: Cutters 33.00-35.00, Utilities 35.50-38.50, indiv 40.00; low dressing: Cutters 26.00-29.50, Utilities 30.50-32.75. Canner and low Culler over 800 lbs 25.00-28.50, light weights 22.00-25.75. Estimated dressed cost at Oklahoma National Stockyards: Cutters 68.25; Boners 72.40; Breakers 69.25; Cannors 64.85. Bulls 73.90. Slaughter Bulls: Yield Grade 1 1350-2400 lbs average dressing 40.00-42.50; high dressing 43.00-46.50, high dressing/high boning 45.50-47.50; low dressing 35.50-37.50.

**Friend's Stockyard Inc.**

Accident, Md. 21520  
Report Supplied by Auction  
January 27, 1997

STOCK BULLS AND STEERS (200-500 LBS.) 40.00-58.50.  
STOCK HEIFERS: 30.00-51.00.  
SLAUGHTER STEERS: GOOD TO CHOICE 64.50-68.10; MEDIUM TO GOOD 57.00-62.50, HEAVY CHOICE OVER 1450 LB. 55.00-66.00.  
HOLSTEIN STEERS: HEAVY CHOICE 41.00-52.50, LIGHT 34.00-44.00.

SLAUGHTER HEIFERS: GOOD TO CHOICE 63.00-67.10; MEDIUM TO GOOD 50.00-62.50.

BULLS: HEAVY 32.00-41.75, LIGHT 28.00-37.00.

COWS: UTILITY (HOLSTEIN) 30.00-38.50, COMMERCIAL TO GOOD 26.00-31.00, CULL COWS 25.00 AND DOWN.

VEALS: GOOD TO CHOICE 40.00-65.00, MEDIUM TO GOOD 20.00-44.00.

BOB CALVES: 20.00 AND DOWN. HOLSTEIN BULL CALVES — RETURN TO FARM (90 TO 120 LB.)- 50.00-87.00.

HOLSTEIN HEIFER CALVES — RETURN TO FARM (100 TO 120 LB.) - UP TO 100.00.

BEEF CROSS CALVES — RETURN TO FARM UP TO 27.00.

HOGS: TOP QUALITY UP TO 55.50, HEAVY UP TO 52.50, LIGHT 30.00-47.00.

SOWS: 35.00-48.50. MALE HOGS: 24.00-39.00.

LAMBS, LIGHT, NONE AVAILABLE; FEEDER LAMBS, NONE AVAILABLE.

SHEEP: NONE AVAILABLE. LIVESTOCK PRICES ARE ALL GIVEN PER HUNDRED WEIGHT!

**PARADISE SALES BARN**

where you get the most for your tobacco  
**11th Anniversary of The Tobacco Auction!**

LAST SALE 2/7, 10 am  
Receiving: 2/6, 2/7 until Noon

If you have any tobacco to move after sale, please contact Paradise

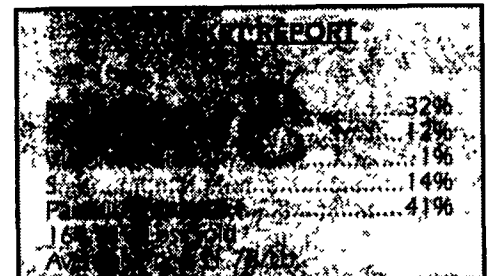
Contract tobacco is now sold and we are now closer to what the auction farmers wanted.

CONTRACT TOBACCO HANGOVER IS NOW OVER.

5,000,000 lb - \$1 60/Lb - Contract Farmers  
5,000,000 Lb - \$1 92/Lb - Auction Target  
10,000,000 Lb. - \$1.75/Lb. Average

Why do country buyers always change bids after auction? Can't country buyers go ahead of auction anytime?

If you need a contract for \$1.80/Lb. tobacco, call Paradise Sales Barn.



Call Mitch for trucking  
Mitch Ashby, auctioneer AU002616-R  
**717-687-0990**



**PARS, INC.**

(POSITIVE APPROACH FOR REVITALIZING SOILS)  
805 MILTON GROVE ROAD SOUTH • ELIZABETHTOWN, PA 17022-9648

DISTRIBUTORS OF:



Call our office for the salesman nearest you.  
1-800-929-2676  
Dealer Inquiries Welcome

**WHAT'S AHEAD FOR CATTLE & HOGS**

- We Deal In Futures And Options
- Our Only Business is Commodity Futures And Options
- In Allentown Area and Same Principals For Over 20 Years
- When Buying options, your risk is limited to the loss of the premium paid plus all transaction costs. Buying futures and options have inherent risks and should be done only with risk capital.

FOR INFORMATION...LITERATURE...  
CHARTS...PLEASE CALL

(610) 366-7979 or 800-543-8939

LEHIGH VALLEY FUTURES INC.

Commerce Plaza, Suite 249, 5000 Tilghman Street,  
Allentown, Pa 18104

The risk of loss in trading futures and options on futures can be substantial. Futures and options trading may not be suitable for everyone. You should carefully consider the risks in light of your financial condition in deciding whether to trade.



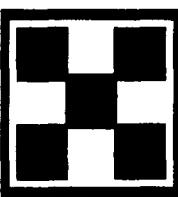
**NEEDED For SPRING CONSTRUCTION**

**POPULATION SUMMER AND FALL OF 97**  
**1000-4000 HEAD HOG FINISHER FACILITIES**

We Provide:

- Single source of pigs
- High Health pigs
- Fixed contract payment plus bonus
- Assistance in obtaining financing
- Successful record in industry

Hog Finsher Ownership Benefits:  
Steady, positive cash flow  
Building equity in facilities

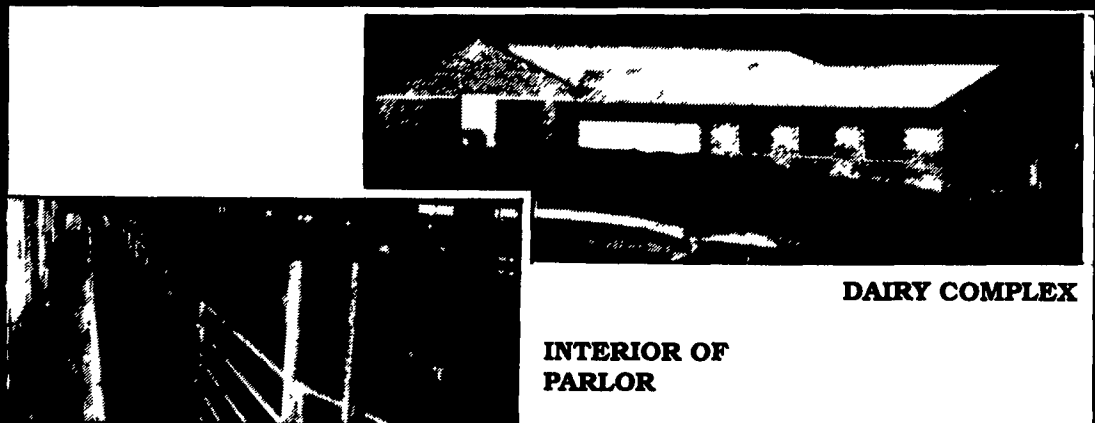


Contact

**Purina Mills, Inc.**  
**1-800-873-5300**

**AGRI-INC.**

Custom Built Farm Buildings  
Designed To Your Needs



DAIRY COMPLEX

INTERIOR OF PARLOR

Let Our Experience Work For You

- Site Layout • Building Design • Construction

- Dairy Complexes And Replacement Stock Facilities
- Horse Stall Barns And Riding Arenas
- Workshop And Machinery Storage Buildings
- Timber Column Building For Light Commercial



**AGRI-INC.** The Construction Professionals



Serving The Agriculture Industry For Over 25 Years

151 E. Farmersville Road, Ephrata, PA 17522 • (717) 354-4271