

**National Egg Market**

**JANUARY 29, 1997**

Prices were unchanged. The market tone was steady. Demand covered the full range and was mostly moderate. Supplies on the West Coast remained short from local production, and elsewhere, supplies were generally te. Breaking stock supplies were about adequate, shortest in the South, and some plants ran reduced schedules due either to insufficient shell supplies or slow finished product sales. Live hen supplies remained adequate.

**New York Egg Market**

**JANUARY 29, 1997**

Prices were unchanged. The market tone was steady. Demand was fair to good, best where features were in progress. Supplies were adequate.

PRICES TO RETAILERS, SALES TO VOLUME BUYERS, USDA GRADE A AND GRADE A, WHITE EGGS IN CARTONS, DELIVERED STORE DOOR, CENTS PER DOZEN.

RANGE EXTRA LARGE 93-95  
LARGE 90-93 MEDIUM 83-86

**Delmarva Broiler**

**JANUARY 29, 1997**

Movement of ready-to-cook whole birds remained light to fair at best. Seller offerings were fully adequate to ample and were generally more readily available on the lighter weight sizes. Live supplies were at least moderate; weights were mixed and irregular. Processing schedules were moderately heavy. Less than trucklot asking prices were unchanged at 56 to 70 cents. Trade sentiment was steady to weak. All parts were generally noted in a range of fully adequate to available for immediate delivery. Leg items were in the closest balance.

ESTIMATED SLAUGHTER OF BROILER/FRYERS IN DELMARVA (000) ESTIMATED ACTUAL AVG. WEIGHT ACTUAL AVG. WEIGHT 01/29 01/27 01/27 01/22 01/20 2,353 2,048 4.91 2,390 5.03 \*BROILER/FRYER CURRENT NEGOTIATED PRICES FOR IMMEDIATE DELIVERY INCLUDES MOSTLY MULTIPLE-DROP SHIPMENTS OF BRANDED AND WING TAGGED TO NEW YORK CITY FROM DELMARVA

BRANDED U.S. GRADE A RANGE 55-71 WEIGHTED AVERAGE 59.04 NO. OF BOXES 7,112 \*8 of 9 plants reporting.

**NE Chicken Pts 1&2**

**JANUARY 29, 1997**

Trucklot buying activity was light and unaggressive with most traders cautious. Offerings were usually in good balance to easily handle current trade needs. Retail and distributive movement was mostly reported as typical for the last week of the month. The market tone remained barely steady to weak.

PRICES PAID PER POUND, ICE PACKED AND CO2 PACKED BROILER/FRYER PARTS, DELIVERED TO FIRST RECEIVERS IN POOL TRUCKLOT AND TRUCKLOT QUANTITIES. ITEM CURRENT NEGOTIATED TRADING\* BREAST - B/S (W & W/O TENDERS) 150-155 BREAST - WITH RIBS 77-78 BREAST - LINE RUN 77 LEGS 46-47 LEG QUARTERS (BULK) 31-32 DRUMSTICKS 49-50 THIGHS 40-41 WINGS (WHOLE) 67-68 BACKS AND NECKS (STRIPPED) 12-14 LIVERS (5 POUND TUBS) 20

GIZZARDS (HEARTS) 40 INCLUDES NEW YORK CITY METROPOLITAN AREA, NORTHERN NEW JERSEY, MASSACHUSETTS, CONNECTICUT, RHODE ISLAND, AND PENNSYLVANIA (NORTHEAST OF HARRISBURG).

(CENTS PER POUND IN 30 LB. CONTAINERS) TRUCKLOTS LTL (MIN. 25 CONT.) RANGE MOSTLY RANGE WHOLE 59-62 61 63-73 BLENDS (/) TBEWR 80-95 WHITES 39-42 40-41 43-55 SUGARED YOLKS (MIN 43%

**NY Phil Frozen Eggs**

**JANUARY 24, 1997**

Prices were unchanged. The market tone was steady to instances fully steady as raw material prices trended higher. Demand was mostly fair, and many buyers had secured commitments for product through the end of March. Frozen product floor stocks were adequate. Shell egg supplies remained tight when sought, and most plants limited breaking schedules to process regularly committed supplies only rather than look for extra eggs. Liquid and frozen eggs (ingredients included) processed under federal inspection in the East for the week ending January 18, 1997 were 15% less than last week, and 30% more than last year (same week).

WHOLESALE SELLING PRICES

**North Atlantic Shell Eggs**

**January 30, 1997**

Atlanta, Ga.

PRICES WERE UNCHANGED. THE MARKET TONE WAS STEADY. RETAIL DEMAND WAS MIXED, MODERATE TO GOOD, BEST WHERE FEATURES WERE IN PROGRESS. SUPPLIES WERE ADEQUATE. BREAKING STOCK SUPPLIES WERE ADEQUATE TO FULLY ADEQUATE.

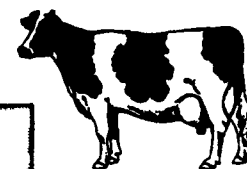
PHILADELPHIA, PRICES TO RETAILERS, SALES TO VOLUME BUYERS, USDA GRADE A AND GRADE A, WHITE EGGS IN CARTONS, DELIVERED STORE DOOR, EXTRA LARGE .89-.93, LARGE .87-.91, MEDIUM .79-.83.

**MAKE YOUR RESERVATIONS NOW!!!**

**PENNFIELD DAIRY DAYS**

**The Family Dairy Farm**

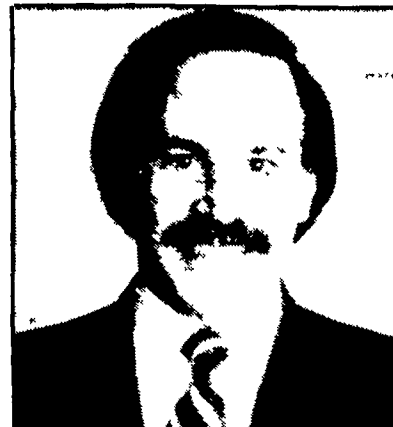
**Profitable and Enjoyable**



**Featured Speakers**

**Timothy Snyder, Ph.D. PAS**  
Mgr., Dairy Nutrition,  
Pennfield Corp.

**Roger L. Saltman, DVM, PAS**  
Senior Technical Services Manager  
Hoffmann - La Roche Inc.



**Meeting Agenda**

9:30 AM	Milk, Coffee and Donuts Visit Four Dairy Display Areas	
10:00 AM	Where Are the Profit Opportunities? Don Mahlandt, Director of Dairy Sales	
10:20 AM	<b>Opportunity #1:</b> Birth to 6 Mos.	Dr. Saltman
10:40 AM	<b>Opportunity #2:</b> Pre-Fresh - Post Fresh	Dr. Snyder
11:00 AM	<b>Opportunity #3:</b> Optimum Udder Health	Dr. Saltman
11:20 AM	<b>Opportunity #4:</b> High Performance Feeding, Forage and Grain Processing	Dr. Snyder
11:40 AM	Lunch - Visit Displays	
1:00 PM	<b>Opportunity #5:</b> High Performance Feeding, Balancing Proteins, Energy, Amino Acids	Dr. Snyder
1:20 PM	<b>Opportunity #6:</b> Improving Reproduction	Dr. Saltman
1:40 PM	Questions & Answers - Door Prizes	
2:00 PM	Adjourn	

**1997 Dairy Meetings**

Monday	Feb. 3	New York Region Dibble's Inn	Vernon, NY
Tuesday	Feb. 4	Kauffman Center	Greencastle, PA
Wednesday	Feb. 5	Howard Johnson Rest.	Millington, MD
Thursday	Feb. 6	Plain & Fancy Rest.	Bird-In-Hand, PA
Friday	Feb. 7	Camelot Restaurant	Milroy, PA

**Ladies Welcome:** The information presented at these meetings will be directed towards the FAMILY DAIRY FARM and its future. Since many wives play a key role in the Family Farm Operation, we would strongly urge both husband and wife to attend as the information presented will be for the "Management Team".

TO MAKE RESERVATIONS CALL 1-800-732-0467

Transportation Available

**pennfield feeds**



*Thriving in a Global Economy*

1997 MID-ATLANTIC  
DAIRY MANAGEMENT  
CONFERENCE

February 28 - March 1, 1997



Hershey Lodge & Convention Center  
Hershey, Pennsylvania

For more information, call:  
Michael O'Connor (814-863-3913)  
Sandy Gunsallus (814-865-5491)  
or FAX message (814-865-7442)