

NY Phil Frozen Eggs

JANUARY 17, 1997

Price ranges were unchanged, and the majority of yolk trading occurred at unchanged to lower levels. The market tone was mostly steady. Demand decreased from last week's active inquiry, and was mostly moderate. Floor stocks of frozen products were adequate. Shell egg supplies tightened under a steady to firm trade sentiment, but overall, breaking plants had adequate shell floor stocks to run full to instances overtime schedules. Liquid and frozen eggs (ingredients included) processed under federal inspection in the East for the week ending January 11, 1997 were 41% more than last week, and 56% more than last year (same week).

WHOLESALE SELLING PRICES (CENTS PER POUND IN 30 LB. CONTAINERS) TRUCKLOTS LTL (MIN. 25 CONT.) RANGE MOSTLY RANGE WHOLE 59-62 61 63-73 BLENDS (J) TFEWR 80-95 WHITES 39-42 40-41 43-55 SUGARED YOLKS (MIN 43% SOLIDS) 92-97 94-95 98-106 SALTED

YOLKS (MIN 43% SOLIDS) 90-94 90-92 95-105 (J) - WHOLE PLUS YOLK PLUS SWEETENER, GENERALLY 28-32% EGG SOLIDS.

NE Chicken Pts 1&2

JANUARY 23, 1997

Trucklot buying activity was generally light and disappointing. Offerings were increasing in their availability and attracting limited buyer interest. Retail and distributive movement was mostly reported as no better than fair. The market tone was cautiously steady.

PRICES PAID PER POUND, ICE PACKED AND CO2 PACKED BROILER/FRYER PARTS, DELIVERED TO FIRST RECEIVERS IN POOL TRUCKLOT AND TRUCKLOT QUANTITIES. ITEM CURRENT NEGOTIATED TRADING* BREAST - B/S (W & W/O TENDERS) 150-155 BREAST - WITH RIBS 77-78 BREAST - LINE RUN 77 LEGS 46-47 LEG QUARTERS (BULK) 31-32 DRUMSTICKS 49-50 THIGHS 40-41 WINGS (WHOLE) 72-73 BACKS AND NECKS (STRIPPED) 12-14 LIVERS (5 POUND TUBS) 20 GIZZARDS (HEARTS) 40 INCLUDES

NEW YORK CITY METROPOLITAN AREA, NORTHERN NEW JERSEY, MASSACHUSETTS, CONNECTICUT, RHODE ISLAND, AND PENNSYLVANIA (NORTHEAST OF HARRISBURG).

Hackettstown Poultry & Egg

Hackettstown, N.J.

Report Supplied by Auction Tuesday, January 21, 1997

Report Supplied by Auction

HEAVY FOWL .90-1.15.
MIXED FOWL 1.20.
SILKIES EACH 3.00.
BANTAMS EACH 1.00-4.00.
ROOSTERS 1.10-2.10.
DUCKS .60-1.25.
RABBITS 1.25-1.60.
PIGEONS EACH 2.50-3.10 each.
GUINEAS EACH 5.75-6.50.
EGGS: WHITE EXTRA LARGE & UMBO .72-.96, LARGE .67-.88.
ROWN EXTRA LARGE & JUMBO '4-.95, LARGE .65-.80, MEDIUM .62.

New York Egg Market

JANUARY 22, 1997

Prices were higher. The market tone continued firm. Demand was fair to good, mostly moderate. Supplies of the large sizes were tight to instances adequate, and light weight sizes were generally adequate.

PRICES TO RETAILERS, SALES TO VOLUME BUYERS, USDA GRADE A AND GRADE A, WHITE EGGS IN CARTONS, DELIVERED STORE DOOR, CENTS PER DOZEN. E 92-94 LARGE 89-92 MEDIUM 81-84

National Egg Market

JANUARY 22, 1997

Prices were unchanged to higher east of the Rockies, and unchanged on the West Coast. The market tone was steady to firm, and remained strongest for the large sizes. Demand was fair to good, best for cartoned eggs where featured; wholesale needs centered on heavy graded or nest run eggs.

Supplies of large sizes were very tight to adequate, and light sizes were generally adequate. Breaking stock supplies were also tight to adequate for a fair to good demand, and the undertone was fully steady. Live hen supplies were sufficient for full plant schedules.

Belleville Poultry

Belleville, Pa.

Wednesday, January 22, 1997

Report supplied by Auction

Geese: none.
Turkeys: none.
Roosters: 4.00-8.00 ea.
Bantams: .25-2.75 ea.
Heavy hens: 2.25-3.00 ea.
Guineas: 3.00 ea.
Silkies: 1.50 ea.
Muscovy hens: 3.00-4.00 ea.
Muscovy drakes: young 3.00-4.00 ea., ld 7.00-8.00 ea.
Mixed ducks: 3.00-4.50 ea.
Barn pigeons: 2.00 ea.
White birds: 3.00-6.00 ea.
Peacocks: none.
Rabbits: under 4 lbs. 1.00-3.75 ea., 4-6 lbs. 4.50-7.00 ea., over 6 lbs. 7.00-12.00 ea.

MAKE YOUR RESERVATIONS NOW!!!

PENNFIELD DAIRY DAYS

The Family Dairy Farm

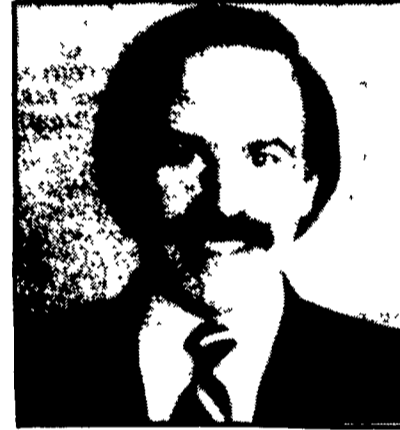
Profitable and Enjoyable



Featured Speakers

← **Timothy Snyder, Ph.D. PAS**
Mgr., Dairy Nutrition,
Pennfield Corp.

Roger L. Saltman, DVM, PAS →
Senior Technical Services Manager
Hoffmann - La Roche Inc.



Meeting Agenda

9:30 AM	Milk, Coffee and Donuts Visit Four Dairy Display Areas	
10:00 AM	Where Are the Profit Opportunities? Don Mahlandt, Director of Dairy Sales	
10:20 AM	Opportunity #1: Birth to 6 Mos.	Dr. Saltman
10:40 AM	Opportunity #2: Pre-Fresh - Post Fresh	Dr. Snyder
11:00 AM	Opportunity #3: Optimum Udder Health	Dr. Saltman
11:20 AM	Opportunity #4: High Performance Feeding, Forage and Grain Processing	Dr. Snyder
11:40 AM	Lunch - Visit Displays	
1:00 PM	Opportunity #5: High Performance Feeding, Balancing Proteins, Energy, Amino Acids	Dr. Snyder
1:20 PM	Opportunity #6: Improving Reproduction	Dr. Saltman
1:40 PM	Questions & Answers - Door Prizes	
2:00 PM	Adjourn	

1997 Dairy Meetings

Monday Feb. 3	New York Region Dibble's Inn	Vernon, NY
Tuesday Feb. 4	Kauffman Center	Greencastle, PA
Wednesday Feb. 5	Howard Johnson Rest.	Millington, MD
Thursday Feb. 6	Plain & Fancy Rest.	Bird-In-Hand, PA
Friday Feb. 7	Camelot Restaurant	Milroy, PA

Ladies Welcome: The information presented at these meetings will be directed towards the FAMILY DAIRY FARM and its future. Since many wives play a key role in the Family Farm Operation, we would strongly urge both husband and wife to attend as the information presented will be for the "Management Team".

Thriving in a Global Economy

1997 MID-ATLANTIC
DAIRY MANAGEMENT
CONFERENCE

February 28 - March 1, 1997



Hershey Lodge & Convention Center
Hershey, Pennsylvania

For more information, call:
Michael O'Connor (814-863-3913)
Sandy Gunsallus (814-865-5491)
or FAX message (814-865-7442)

TO MAKE RESERVATIONS CALL 1-800-732-0467

Transportation Available

pennfield feeds

