

SOONER OR LATER...YOU'LL CHOOSE A

SUNFLOWER

HUNDREDS OF YOUR NEIGHBORS ALREADY HAVE

CHISEL PLOWS • LAND FINISHERS • COULTER RIPPERS • DISKS • FIELD CULTIVATORS

ASK ABOUT OUR 3 YEAR WARRANTIES

THE REASONS ARE OBVIOUS

DURABILITY: Disk Harrows with 1 1/4" dia. axles Built Heavier More Weight for Better Performance

DEALER SERVICE SUPPORT: Binkley & Hurst Bros., Inc. with Experience to meet Your Needs.

RESALE VALUE: Strong SUNFLOWER Resale At Farm Auctions Is A Sign That Sunflower Has What Farmers Are Looking For - And Is Just Another Good Reason Why More Farmers Are Switching To Sunflower Than To Any Other Brand!

The King of the Hill Rock Flex heavy duty cut - plow level to finish with perfection!

Available in sizes 19', 22', 25', 28', 32', 35', up to 45'. With more weight per foot penetration up to 570 lbs. and would you believe this heavy duty machine will level to perfection where most competitive brands won't

See Binkley & Hurst Today



Designed for today's conservation tillage farmer.

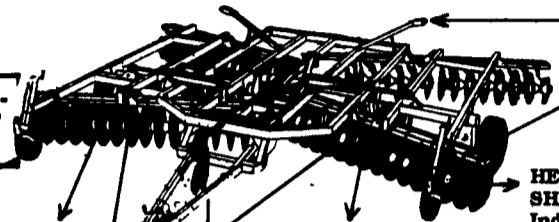
RockFlex model 1200 series

Check Out The Rest - Then Buy The Best! **SUNFLOWER**

WING GAUGE WHEELS Eliminate Gouging

BLADES: 1/2" x22" or 1/2" x24" On 8.5" Spacing 3 Sided Blade Prevents Erosion By Eliminating A Continuous Furrow

DOUBLE OFFSET DESIGN Provides Maximum Leveling Without A Middle Buster Or Center Tooth



Your Choice Of RIGID or C-FLEX BEARING STANDARDS.

SELF-LEVELING WITCH Maintains Level Setting Regardless Of Desired Depth Or Tillage Application

TRANSPORT WIDTH On Wing Units Up To 24'2" Working Width Is A SAFE 12'4" Transport.

3 YEAR WARRANTY On Triple Lip Sealed Trunnion Mounted, Regreassable BEARINGS

HEAVIEST AXLE SHAFTS In The Industry - 1 1/2" Dia. Gange Are Hydraulically Torqued To 1400 Lbs. & Spring-Loaded To Eliminate Loosening, Wear And Breakage.

Go from field working to highway transport in seconds. Transport width on 18'-21'-24' units are only 12'4" barely the width of your dual wheels, leaving plenty of room for traffic to pass. Transport height is within legal limits.

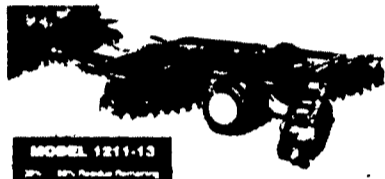
sizes range from: 18 ft, 21 ft, 24 ft, 27 ft, 29 ft & 32 ft.



MODEL 1211

If your tillage program requires the use of a disc harrow, look no further. Sunflower disc harrows are proven performers. The super-stars of the Sunflower lineup! Try one today.

Sizes Available
10' - 12' - 13' and 15 foot



MODEL 1211-13

Heavy Duty Mounted Ripper Units

FROM HARDPAN SHATTERING TO RESIDUE COVERED FINISHED SEEDBEDS...
SUNFLOWER EXCEEDS YOUR TILLAGE NEEDS

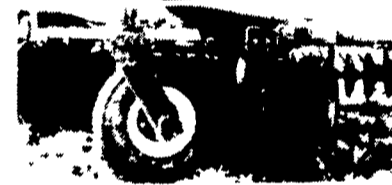
SUNFLOWER RIPPERS

- ★VERSATILE
 - ★ADAPTABLE
 - ★TOUGH
 - ★PROVEN
- Check Out These Features
- ✓ 10 1/8" Frame
 - ✓ 3-9 Shanks On Infinite Spacing From 15"
 - ✓ 36" Under Frame Clearance
 - ✓ Heavy Duty Trip Mechanism Allows Shanks To Trip

- Back 36"
- 10' & 14' Frames In Stock
- We Will Install Your Choice Of Number Or Shanks To Match Your Tractor Horsepower
- ✓ 5100 lb. Max. Point Pressure
- ✓ 2" Slip-In Spindles On 2 Or 4 Wheels
- ✓ 18" Upward Tripping Clearance On Auto Reset Shanks
- ✓ GREAT PRICE VALUE!!



"Belling, uplifting action in the soil allows water to enter and be retained in subsoil, minimizing runoff! Yield increase up to 10 bu more corn per acre," Lancaster Co farmer

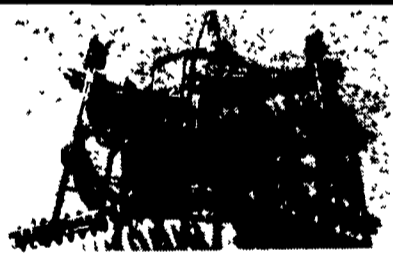


The Secret to a Level Field is the SUNFLOWER GAUGE WHEELS

A trademark on all flexible Sunflower Discs is Front-Mounted Gauge Wheels. This important feature prevents the front gangs of the wing frame from gouging, buckling or cutting deeper than the other gangs, promoting a level ridge or furrow-free field. The heavy duty gauge wheel features a 5-bolt hub and 8.00x10 ply tire & tube.

DOUBLE OFFSET DESIGN

Eliminates center ridging while cutting the entire width at an even depth. Self-leveling hitch provides fore & aft leveling at any working depth.



4212



COULTER CHISEL

8'9" to 18'9" Widths Available!

CHECK OUT THIS SUPERIOR NEW PRODUCT FROM SUNFLOWER!

- New extended frame length for better trash clearance
- Auto-reset trip
- Heavy-duty 4"x6"x1/2" mainframe construction
- Hydraulically controlled coulters gangs (optional) can be adjusted on the go or raised completely in clean soils.

Four inch twisted shovels provide maximum residue incorporation. Optional 2" reversible shovels team with hydraulically-adjustable coulters to give maximum residue cover while "perforating" plow pan to encourage water retention.



SUNFLOWER

Series 6000 LAND FINISHER

The RIGHT combination in one-pass tillage. The New Sunflower 6000 Series Land Finisher performs three operations in one pass. It discs, cultivates, and finishes the seedbed all at once. Working widths from 13 to 37 feet.

PULL TYPE RIPPERS WITH FRONT MOUNTED HYDRAULIC COULTERS

For The Best In Tillage call

1-800-414-4705

OR

717-626-4705

At Binkley & Hurst Bros. Today



Automatic Reset Shanks: These shanks are equipped with special hard-ened replaceable wear bushings in every pivot point and contains grease zerks in required locations. The

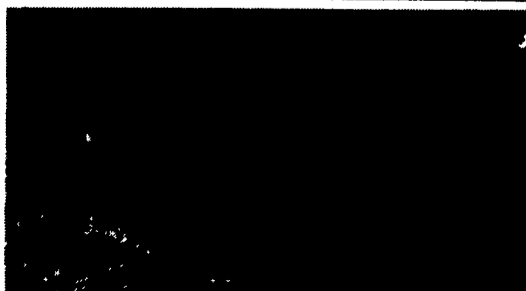
shank features a maximum point load of 5100#, offers a tripping height capable of clearing obstructions and will automatically reset itself after tripping. Each shank is equipped with a replaceable point. It's produced from 1 1/4"x4" hi-strength material and features an on edge design.

SUNFLOWER

5000 Series Field Cultivators range in sizes from 18' to 37' on 3-section models

They may be ordered with the Coil Tine Harrow attached or, the attachment may be added to units already in the field. Either way, the results are well worth the extra cost of a Sunflower Coil Tine Harrow Attachment.

The narrow transport width of the Sunflower 5000 Series Field Cultivator is accomplished quickly, easily and safely from the tractor seat. Wings fold over center to provide maximum stability and excellent road clearance.



BINKLEY-HURST BROS. INC.

183 Rotheville Station Rd.
P.O. Box 0396
Litz, PA 17543-0396
(717) 626-4705
1-800-414-4705



Farm Power
A Service of FPC Financial
Fax 717-626-0996