

ENGINES FOR SALE:
Mack 285 237
Cat 3208 & DT 466 Int
DETROIT 6V53 318,
8V92, V671 & 671
Gas Engine: Ford 391,
361; Chevy 366, 427, 350
Many other parts at reason-
able prices
HAP'S TRUCKS & PARTS
1-800-839-3338

Eby 14' cattle body w/Warn
winch, 3 years old, da-
maged front corner, \$2500
OBO 717-336-7375.

For Sale: 1980 GMC tan-
dem dump truck, newly re-
built 6-71 Detroit, 52,000
GVW Road Ranger trans.,
radials 90%, \$9500
610/759-3290

Inter & Mack cab & chas-
sis, PS, 1-dump Call Ger-
ald 717-463-3701 ext. 212

MACK PARTS FOR SALE
Engines, blocks, heads &
cranks,
cabs, hoods & doors,
trans, rears,
ALL MACK PARTS
REASONABLE PRICES
MACK TRUCKS BOUGHT
(complete or parts)
610-921-1971

C65 Chevy grain truck, 16'
grain body w/hoist, 10-20
tires, PS, PB, good condi-
tion, \$3900. 717-786-1119
evenings

Chevy F-10 pickup, 4 3,
auto, am/fm, electric win-
dows, locks, sunroof, ex,
75,000 mi., \$5900
(717)627-3911

PRE-OWNED CARS	PRE-OWNED TRUCKS	PRE-OWNED MPV'S
'95 CHEVY CAVALIER Z-24 A/C, 5 Spd, AM/FM, Cassette	'95 CHEVY 2500 S/CAB Silverado, A/C, A/OD	'95 CHEVY ASTRO CL A/C, A/OD
'96 FORD TAURUS GL, Sedan, A/C, A/OD, AM/FM Cassette	'94 CHEVY 3500 Dump Truck, 5 Speed	'94 CHEVY S-10 BLAZER Tahoe, A/C, A/OD
'96 FORD CONTOUR GL A/C, A/OD, AM/FM, Cassette	'92 CHEVY 1500 S/CAB 4x4 Silverado, A/C 5 Speed	'93 DODGE GRAND CARAVAN A/C, A/OD
'94 FORD ESCORT LX Coupe A/C, A/OD	'97 FORD F-150 S/CAB Lanal 4x4, A/C A/OD	'95 FORD WINDSTAR GL A/C A/OD
'94 FORD MUSTANG Coupe, 5 Speed	'96 FORD F-150 4X4 S/CAB, XLT, A/C, A/OD	'95 FORD EXPLORER XLT A/C A/OD
'92 FORD TEMPO GL A/C, Auto, AM/FM Cassette	'95 FORD F-350 DUMP Diesel A/C 5 Speed	'94 FORD AEROSTAR Extended AWD 2 AC A/OD
'96 LINCOLN CONTINENTAL Signature A/C A/OD, AM/FM Cassette	'95 FORD F-150 S/CAB Flareside 4x4 A/C A/OD	'92 FORD CLUB WAGON Chateau 2 AC A/OD
'95 MERCURY SABLE GS Sdn A/C, A/OD AM/FM Cassette	'95 FORD F-150 4X4 S/CAB Eddie Bauer A/C A/OD	'95 JEEP GRAND CHEROKEE Laredo, A/C Auto AM/FM Cassette
'93 MERCURY TRACER LTS Sdn A/C A/OD	'94 FORD F-150 XL A/C 5 Speed	'95 JEEP CHEROKEE Sport A/C, Auto
'93 TOYOTA CAMRY LE, A/C A/OD, AM/FM Cassette	'94 CHEVY 1500 S/CAB 4x4 Flare A/C, 5 Speed	'93 JEEP WRANGLER Sahara 2-Tops 5 Spd AM/FM Cassette

ENGLE-RISSINGER AUTO GROUP

Midway Between Halifax And Millersburg • 717-896-3421 • 1-800-242-8075

HOURS: Monday-Friday 8:30 AM - 8:30 PM; Saturday 8:30 AM - 3:00 PM

WHITMOYER

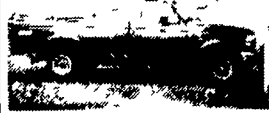
FORD • MERCURY

YOUR FARM & PERSONAL TRUCK HEADQUARTERS

**1992 Ford
Explorer XLT**
4x4, 5 speed
WAS \$13,995
NOW \$12,300



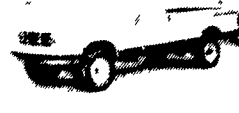
**1996 Ford F150
4x4**
Automatic, 5,000
Miles, Just Arrived



**1994 Geo Tracker
4x4 Conv.**
Auto, AC, Cassette Stock
#1662A Was \$12,995
NOW \$11,200



1997 Ford F250
Heavy-Duty, Reg
Cab, Diesel
2 In
Stock
**TWO IN
STOCK**



**1982 Ford
F250 XLT 4x4**
Auto, V8,
Stock #3676
Mgr. Special
\$4,995



**1993 Ford Explorer
"Eddie Bauer"**
Stock #P6333
Was \$20,495
\$18,100



**1997 Ford 4x4
"Off Road"**
Ext Cab, Auto, V-8,
Loaded
2 In
Stock
**RARE TO
FIND**



**1995 Ford
Explorer XLT**
4 Dr., Low Miles,
Stock #5654A
Was \$24,995
NOW \$22,700



**1995 Ford Club
Wagon XLT**
V-8, 8 Passenger,
Dual AC, Full Power,
Low Mileage
Sale Priced \$19,400



**1997 Mercury
Mountaineer**
3 In Stock



**1997 Ford E250
H.D. Cargo Van**
3 In Stock

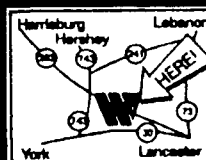


**1997 Ford
Ranger Ext
Cab**
Auto, 6 cyl., Loaded
w/all options



CUSTOMER SATISFACTION WORTH DRIVING FOR

Whitmoyer
FORD • MERCURY
Rt. 283 & Rheems/E-town Exit • Elizabethtown
Sales Hrs: M-F 8:30 am - 9pm • Sat. 9am - 5 pm
717-367-7022 or 1-800-267-2088



www.auto-locate.com/whitmoyerford

e-mail us at: whity@red.rose.net

USED TRUCKS



94 Chev Silverado 4x4 8600 GVW 6 5
Turbo Diesel, PS, PB, 5 spd AC PWPK
Cruise Tilt wheel, Rear Sliding Window
44,000 miles Two Tone Maroon & Silver

\$19,500



94 Chev Silverado 4x4 8600 GVW 350
11 auto O/D PS, PB AC AM & FM
Stereo Sliding Rear Window Dr Blue
65,000 miles

\$17,900

MARTIN'S AUTO SALES

1025 W. Main St., New Holland, PA 17557

(717) 656-6621



**Twin Pine
Auto
Sales**

1928 West Main St. (Rt. 322) Ephrata, PA

717-733-6548

88 TWIN-PINE

PLEASE CHECK OUR PRICES BEFORE YOU BUY



95 CHEV. K2500 SILVERADO
Extend Cab, 4x4, 6.5 Turbo Diesel,
5-Spd, A/C, Loaded, 86000
GVW, 31,000 miles

\$23,900



94 CHEV. K3500 EXT. CAB 4X4
Silverado Dually 6.5 turbo Diesel
AT A/C Loaded Century Conv
88,000 miles

\$19,900



95 BUICK SKYLARK CUSTOM
V6, AT A/C, PS, PB PW PL C, E, Stereo Cass.
33,000 Miles, Black

\$9,500



96 BUICK CENTURY SDN
V6 AT A/C PS PB PL PW C T Cass 21,000 miles
Dark Blue
REDUCED

\$12,500



91 CHEV. ASTRO EXT.
C I AWD 4.3 V6 AT AC PS PB PW PL C T Stereo Cass.
55,000 Miles
SPECIAL SALE ON ALL 4X4 VANS
\$1,000 OFF (6 IN STOCK)

\$10,800



89 FORD F350 EXT. VAN XLT
351 V8 AT Dual AC PS PB PW PL C T Conversion
Pkg. 68,000 miles Good
Condition Blue

FIRM \$8,995
WAS \$10,500

McNAMARA
SUBARU Limerick, PA
1 (800) 753-3123

**DIESEL
LAND**

USED TRUCKS & CARS

- 1996 GMC 2500, ext/ cab, HD, Silverado, 6.5 turbo diesel auto, latest state inspection, red w/grey belt line **\$27,995**
- 1995 FORD F350 CREW CAB, 4x4, XLT, Power Stroke Diesel, Auto, Air, Loaded, Including Power Mirrors **\$28,900**
- 1995 Ford F250 XL, 4x4, ext-a-cab, auto, 351 V-8m 7 1/2 Meyers Plow **\$22,995**
- 1994 Dodge 2500, ST pkg, 4x4, 360 V8, auto, air, 40,000 miles, w/Plow **\$19,995**
- 1994 Chevy 3500, Ext Cab, Dually, 4x4, 5 spd, Silverado, 6.5 Turbo Diesel, Windows, Locks, Tilt, Cruise, 48,000 mi. **\$24,995**
- 1993 Dodge, D150, 4x4, LE pkg., windows, locks, tilt & cruise, 318 V-8, 46,000 mi., pretty truck **\$15,900**
- 1993 Dodge D250, club cab, Cummins turbo diesel, 1 owner, 4x4, 5 spd., LE pkg., window, locks, tilt and cruise, balance of factory warranty **\$18,900**
- 1992 Dodge D250, Cummins turbo diesel, 4x4, automatic, air, LE pkg., windows, locks, tilt & cruise, 70,000 miles, 1 owner, bal. factory warranty, white w/gray trim. **\$17,900**
- 1992 Ford Explorer, XLT Pkg, 4-door, 6 cyl., windows, locks, tilt, and cruise, white w/beige trim **\$12,995**
- 1992 Chevy ext-a-cab short bed, 4x4, Silverado pkg., windows, locks, tilt, cruise, charcoal grey w/red inserts **\$16,900**
- 1991 Chevy 1500, step side, 4x4, Silverado pkg., 77,000 miles, auto, air, 350 V8, new inspection, looks and runs great. **\$13,900**
- 1989 Ford F150, XLT, 4x4, 49,000 miles, 302 V-8, window locks, tilt, and cruise, 7-1/2' Meyers plow **\$12,995**
- 1988 Ford F250 XLT, 4x4, Auto, Air, Brand New Crate Motor, 460 V8, Black & Red, w/8' Fisher Plow **\$12,900**
- 1987 Ford F250 XLT, 4x2, diesel powered, auto, air, 1 owner, well serviced **\$6,995**
- 1986 Toyota, 4 cyl., auto, auto, latest PA state inspection, new tires, new brakes **\$4,995**
- 1985 Ford F250 XLT, extend-a-cab, 460 V8, 4 Speed, air, AM-FM stereo cassette, A Real Work Horse! **\$5,995**

REWARD: Cash paid for any diesel 4x4
Before you trade, see us with your 4x4 diesel