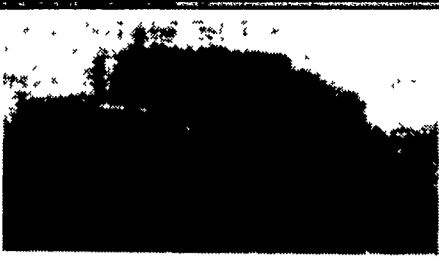




1988 Freightliner
400 hp Big Cam IV Cummins w/C-Brake,
9 speed trans, 23,000 lb. rear axle, air ride susp.,
LP 11R24.5 tires, 40 in. bunk, aluminum frame
(717) 632-7864



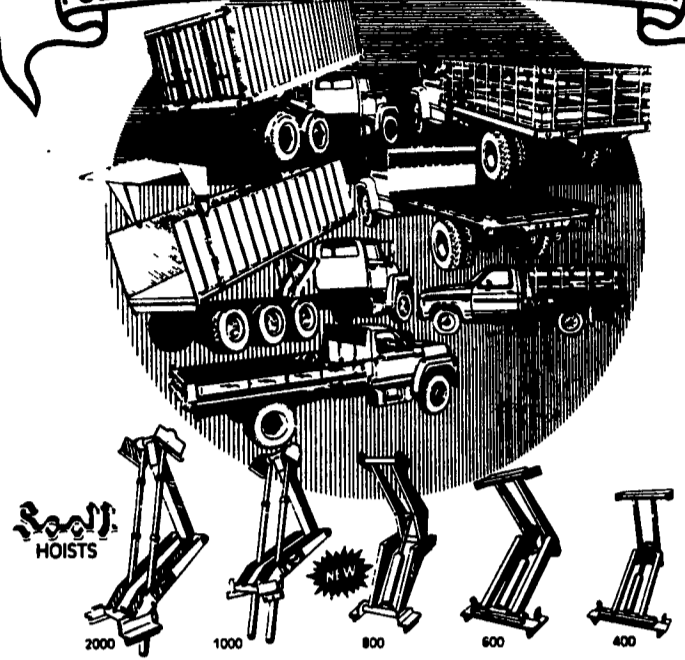
1986 Ford Tandem Truck and
1984 Hill Airslide Lime Trailer
Ready To Work
\$45,000 OBO
717/354-5310

**If You Are Tired Of Poor Quality Come And See The All New
Binkley & Hurst PRO-TOW Utility Trailers!**



16 Foot Deck With Torflex Angles With 225-R15 E Range Tires
On Spoke Wheels, Sealed Beam Lights & Wiring, Pull Out
Ramps, Heavy Duty 10,000 Lb. Jack Stand, Adjustable Hitch
Height, 10,000 GVW, Ideal For Skid Loader Transport And
Many Other Uses. We Also Sell A Full Line Of Truck Hitches &
Brake Controllers With Installation. See Binkley & Hurst Bros.
Today For More Quality!

TAFCO EQUIPMENT COMPANY
SOFT BODIES & HOISTS
YOUR
FULL LINE TRUCK EQUIPMENT MANUFACTURER



Call Today and Ask For Dean!
Truck Bodies In Stock

**BINKLEY-HURST
BROS. INC.**

133 Rothsville Station Rd.
Lititz, PA 17543
(717) 626-4705
1-800-414-4705



ARMY TRUCK PARTS

CHAMBERSBURG, PA

COMPLETE TRUCK INVENTORY
COMPLETE PARTS INVENTORY
THE NATION'S LARGEST ARMY
TRUCK AND PARTS DEALER

Request Our Free Army Truck Parts Catalog

**MEMPHIS
EQUIPMENT**

821 Lincoln Way West
P.O. Box M
Chambersburg, PA 17201

717/263-4194 FAX 717/263-4555



GLENN ALLEMAN, GEN. MGR.
MARK SIPES, PARTS MGR.



6x6 TRUCKS
2½ & 5 TON
UNITS AVAILABLE
ENGINES
TRANSMISSIONS
TRANSFER CASES
DRIVE TRAIN
CAB KITS



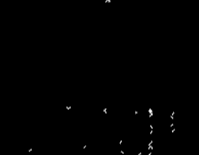
92 FORD F250 SUPER CAB
XLT Lariat, 7.3 Diesel, AT, A/C, Loaded,
70,000 miles, #F579



98 CHEV CREW CAB DUALY
4x4, AT, 454 V8, A/C, PW, PL, C, T,
93,000 Miles #C376



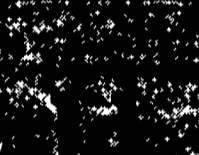
92 GMC K3500 4x4 EXT. CAB DUALY
Loaded, AT, A/C, only 61,000 miles,
white. #G170



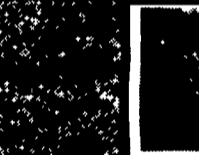
96 DODGE RAM 2500 EXT. CAB
4x4, 360 V-8, 4-Spd. Auto, PW, PL, C, T,
410 L/S Diff., only 11,000 orig. miles.
Bal. Fact. Warranty, Red, #D182



**88 FORD F350
CREW CAB DUALY**
XLT Lariat, 7.3 Diesel, 5-Spd, A/C, only
87,000 Miles, maroon & silver. #F565



94 CHEV. K2500 EXT. CAB
4x4, 6.5 Turbo Diesel, AT, A/C,
silverado, Loaded, Z-71 Pkg., 59,000
miles, Black w/Grey Int., Factory
Warranty. #C384



**87 CHEV. C30 CREW CAB
DUALY 4x4**
454 V8, 4-Spd., 61,000 miles, Extra
Clean for year, #C383 HARD TO FIND



93 FORD F250 4x4
XLT Lariat, 351 V8, AT, A/C, PW, PL, C, T,
All New Tires, 72,000 Miles, Real Nice
#F539



**96 FORD F350 CREW CAB UTILITY BODY,
4x4** Power-Stroke Diesel, AT, A/C, 9200 GVW,
59,000 miles, Red, Bal. Fact. Warranty. #F569



95 DODGE RAM 2500
SLT Laramie, 4x4, Cummins Turbo Diesel, AT,
A/C, PW, PL, C, T, 4400 miles, Dark Green
Metallic, Balance Factory Warranty #D181



94 CHEV 3500 DUMP
350 V8, 5-Spd, PS, PB, 11,000 GVW, Only
23,000 Miles. #C375



94 CHEV. 3500 CREW CAB DUALY 4x4
6.5 Turbo Diesel, 5-Spd., A/C, PW, PL, C,
T, Stereo, Silverado Pkg., 40,000 miles,
Bal. Fact. Warranty, Black, #C382



89 CHEV 2500 CREW CAB
454 V8, AT, A/C, C, T, PW, Silverado
Pkg., 2-tone Red & White, High Miles
but very clean. #C391



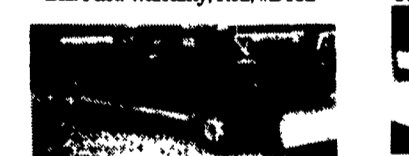
94 DODGE RAM 3500 4x4 Dually
Cummins Turbo Diesel, Laramie SLT, AT,
A/C, PW, PL, C, T, Stereo, 38,000 Miles,
Black & Red. #D183



94 FORD F250 XLT 4x4
7.3 Turbo Diesel, AT, A/C, PW, PL, C, T,
8,600 GVW, 58,000 Miles, #F541



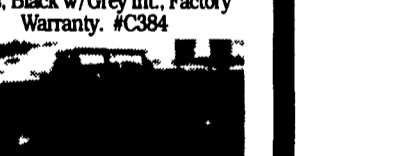
94 CHEV. K2500 EXT. CAB 4x4
454 EFI, AT, A/C, PW, PL, C, T,
66,000 Miles, Silverado, #C390



94 CHEV K3500 DUALY 4x4
6.5 Turbo Diesel, AT, A/C, Conversion Pkg.,
Dark blue w/Sport Pkg., 31,000 Miles, Fact.
Warranty. Very Nice #C382



89 FORD F350 CREWCAB 4x4
w/Powerstroke Diesel, XLT, AT, Loaded,
Alum. Wheels, Only 10K, Balance of Fact.
Warranty (#F576)



94 CHEV 2500 SERIES
Omaha Utility Body, 350, AT, A/C, C, T,
36,000 Miles, Teal-Green, #C387



85 FORD F250 SUPERCAB DUALY
6.9 Diesel, AT, A/C, PS, PB, Fold down
gooseneck Hitch, Hi-Miles but
excellent condition #F563



94 FORD F350 CREW CAB DUALY
7.3 Power Stroke Diesel, XLT, 5-Spd., A/C,
PW, PL, C, 63,000 Miles, Bal. of Factory
Warranty, #F544



96 FORD E350 CLUB WAGON
Power Stroke Diesel, Loaded; with all options,
AT, A/C, Alum. Wheels, 12-passenger,
20,000 miles, Factory Warranty, #F562



90 FORD F350 DUALY
460 V8, AT, A/C, XLT Pkg., Loaded
maroon & silver, only 55,000 Miles #F280



94 FORD F250 SUPER CAB 4x4
7.3 Diesel, AT, A/C, XLT Lariat, PW, PL, C, T,
68,000 Miles. #F568

**OVER
120
TRUCKS**