

Oklahoma City

Feeder Cattle

Oklahoma City, OK

Wed Jan 8, 1997

USDA-OK Dept Ag Market News

Oklahoma National Stockyards - Weekly Cattle Summary

Compared to Dec 16th: Feeder steers steady to 2.00 higher; feeder heifers 2.00-3.00 higher. Calves 2.00-3.00 higher. Demand good for all classes and grades. Quality of supply average to attractive. Weigh condition gaunt to average, few full. Bulk of calves and light yearlings in thin flesh. Feeder cattle in medium to slightly fleshy condition off wheat and rye grass. Slaughter cows weak to 1.00 lower. Demand fairly light for cows. Slaughter bulls 1.50 higher with moderate demand. 900 cows and bulls sold with 70 percent to packers. Receipts this week 12,500; last week no sale; last year 10,699. Supply consisted of 64 percent yearlings over 600 lbs; 30 percent calves under 600 lbs; 6 percent cows and bulls. Prices follow with weighted average weight and price in parenthesis.

Feeder Steers: Medium and Large 1
Calves: 350-400 lbs (374 lbs) 79.50-82.00 (80.91); 400-500 lbs (450 lbs) 72.50-79.00 (75.45); 500-550 lbs (527 lbs) 69.00-74.25 (70.84); 550-600 lbs (575 lbs) 65.50-72.00 (69.50); 600-650 lbs (614 lbs) 66.00-68.50 (66.86); Yearlings: 600-700 lbs (650 lbs) 67.25-70.75 (69.66); 700-750 lbs (725 lbs) 67.00-70.50 (68.77); 750-800 lbs (779 lbs) 65.75-71.00 (68.55); 800-850 lbs (826 lbs) 67.00-71.00 (68.83); 850-900 lbs (879 lbs) 63.50-68.50 (66.68); 900-950 lbs (917 lbs) 62.00-65.25 (64.50); 1000-1050 (1034 lbs) 58.00-59.50 (59.20). Holstein Steers: Large 2 700-750 lbs 45.00-47.25; 840 lbs 46.25; 900-1000 lbs 40.50-41.00.

Feeder Heifers: Medium and Large 1
Calves: 350-400 lbs (385 lbs) 59.00-63.50 (60.96); 400-500 lbs (450 lbs) 59.00-63.75 (61.74); 500-600 lbs (550 lbs) 57.00-62.00

(60.33); Yearlings: 500-600 lbs (550 lbs) 62.00-64.00 (63.07); 600-700 lbs (650 lbs) 60.75-65.00 (63.87); 700-750 lbs (722 lbs) 62.00-65.50 (64.11); 750-800 lbs (763 lbs) 60.50-64.00 (62.50); 800-850 lbs (820 lbs) 59.50-61.75 (60.91).

Slaughter Cows: Average dressing: Cutters 26.00-29.00, Boning Utilities 27.00-30.00, Breaking Utilities 29.50-33.00; **High Dressing:** Cutters and Boning Utilities 30.00-33.00, Breaking Utilities 31.00-35.00; **low dressing:** Cutters and Boning Utilities 24.00-27.75, Breaking Utilities 28.00-29.00. **Canner** 22.00-25.50, light weight or shells 17.00-21.50.

Estimated dressed cost at Oklahoma National Stockyards: Cutters 59.70; Boners 59.00; Breakers 58.95; Canners 55.50. Bulls 68.15.

Slaughter Bulls: Yield Grade 1 1450-2100 lbs average dressing 37.00-39.00; high dressing 40.00-42.00, high dressing/high boning 43.00; low dressing 33.00-36.50.

Replacement Cows: Pretested for Bangs, pregnancy, and age Medium and Large 1 single head sales: 3-6 yr old 1050-1150 lbs 6-7 months bred High quality 500.00-620.00; Avg quality 370.00-440.00; 4-6 yr old 950-1150 lbs 2-5 months bred Avg quality 305.00-350.00.

Eighty-Four Livestock

Eighty-Four, Pa.

Monday, January 6, 1997

CATTLE...276 (PDA)...COMPARED WITH LAST WEEK'S SALE. STEERS, HEIFERS & BULLS STEADY, COWS STEADY TO T.OO LOWER.

STEERES: FEW SELECT 52.00-55.00, FEW STANDARD 40.00-47.50.

HEIFERS: FEW STANDARD 31.50-42.50.

COWS: BREAKING UTILITY AND COMMERCIAL 31.50-34.50, CUTTER & BONING UTILITY 27.00-31.00, CAN-

NER AND LOW CUTTER 20.00-27.00, SHELLS DOWN TO 14.00.

BULLS: YIELD GRADE NO. 1 975-2065 LBS. 36.00-40.50, NO. 2 1085-1930 LBS. 29.00-37.50.

FEEDER CATTLE: STEERS: MEDIUM & LARGE FRAME NO. 1 350-875 LBS. 47.50-65.00, MEDIUM & LARGE FRAME NO. 2 300-695 LBS. 28.00-45.00; **HEIFERS: MEDIUM & LARGE FRAME NO. 1** 300-735 LBS. 40.00-55.00, MEDIUM & LARGE FRAME NO. 2 225-875 LBS. 26.00-41.00; **BULLS: MEDIUM & LARGE FRAME NO. 1** 1250-695 LBS. 42.50-56.00, MEDIUM & LARGE FRAME NO. 2 225-750 LBS. 30.00-42.00.

CALVES: 128. FARM CALVES STEADY TO 8.00 HIGHER.

VEALERS: CHOICE 125-205 LBS. 62.50-80.00, GOOD 135-190 LBS. 36.00-48.00, STANDARD AND GOOD 90-110 LBS. 19.00-24.00, 65-85 LBS. 15.50-24.50, UTILITY 50-70 LBS. 10.00-15.00.

FARM CALVES: NO. 1 HOLSTEIN BULLS 90-120 LBS. 61.00-98.00, NO. 280-110 LBS. 25.00-57.50, ONE NO. 1 HOLSTEIN HEIFER 115 LBS. AT 115.00, FEW NO. 2 75-80 LBS. 25.00-62.50.

FEW BEEF CROSS BULLS AND HEIFERS 75-120 LBS. 20.00-39.00.

HOGS 25: BARROWS AND GILTS: US 1-3 250-290 LBS. 51.50-52.50, US 2-3 225-295 LBS. 48.50-50.25.

SOWS: FEW US 1-3 350-450 LBS. 38.00-42.00, 525-590 LBS. 46.75-50.00. **BOARS: FEW 475-615 LBS.** 38.75-39.25.

FEEDER PIGS 11: US 1-3 41 LBS. AT 41.50 PER HEAD.

SHEEP 101: SLAUGHTER LAMBS: HIGH CHOICE AND PRIME 100-130 LBS. 90.00-96.00, CHOICE 80-90 LBS. 95.00-101.00, 50-75 LBS. 91.00-122.00. **SLAUGHTER SHEEP:** 30.00-51.00.

GOATS: 32 LARGE 105-145 LBS. 48.00-89.00 PER CWT. **MEDIUM** 33.00-59.00, **SMALL** 13.00-26.00 PER HEAD.

Westminster Livestock Auction

Hagerstown, Md.

January 7, 1997

Report supplied by auction

SLAUGHTER COWS: 196 HEAD, STEADY TO 1.00 LOWER. UTILITY 32.00-37.00; HIGH DRESSING 37.50-38.75; **CANNERS** 27.00-31.00; **SHELLY** 26.00 DOWN.

BULLS: 15 HEAD. YG#1 39.00-40.75; YG#2 36.00-38.50.

FED STEERS: HIGH CHOICE TO PRIME 1100-1450 LBS. 68.50-73.00; 1000-1100 LBS. 63.00-66.00; **LOW CHOICE** 55.00-60.00; **HIGH CHOICE HOLSTEINS** 1150-1300 LBS. 3 HEAD 62.00-64.00; **CHOICE** 57.00-58.00.

FED HEIFERS: HIGH CHOICE 900-1150 LBS. 60.00-66.00; **LOW CHOICE** 54.00-60.00.

VEAL CALVES: 158 HEAD. CHOICE 2 HEAD 200-225 LBS. 60.00 AND 68.00; **CULLS** 85-110 LBS. 17.00-25.00; 50-80 LBS. 10.00-20.00.

FARM CALVES: HOLSTEIN BULLS #1 100-125 LBS. 68.00-84.00; 90-100 LBS. 50.00-72.00; #2 80-90 LBS. 25.00-45.00; **HOLSTEIN HEIFERS** #1 90-120 LBS. 100.00-140.00; #2 75-95 LBS. 40.00-85.00.

BUTCHER HOGS: 85 HEAD, 2.00-3.00 LOWER. US#1-2 225-265 LBS. 51.00-52.00; 215-260 LBS. #1&3 50.00-51.00; 13 HEAD 269 LBS. AT 48.50; 20 HEAD 270-300 LBS. 48.00-50.25.

SOWS: 10 HEAD. 300-450 LBS. 42.00-46.00; 450-650 LBS. 46.00-48.00. **BOARS: 8 HEAD. 270-650 LBS.** TO 39.50.

STOCK CATTLE: 185 HEAD, STRONGER DEMAND. **STEERS** 300-500 LBS. 44.00-55.00; 500-700 LBS. 46.00-59.00; 700-900 LBS. 42.00-50.00; 900-1000 LBS. 50.00-58.00.

HEIFERS: 300-500 LBS. 38.00-49.00; 500-700 LBS. 37.00-47.00; 700-900 LBS. 38.00-48.00, 2 AT 50.00-57.50.

BULLS: 200-400 LBS. 42.00-54.00;

Some Markets Not Available Because Of Early Press Farm Show Deadlines

400-600 LBS. 38.00-49.00, FEW 51.00-55.00; 600-900 LBS. 36.00-46.00; 1 950 LB. AT 50.00.

LAMBS: 75 HEAD. CHOICE, STRONG DEMAND. 110-130 LBS. 85.00-96.00; 95-110 LBS. 88.00-100.00; 80-95 LBS. 105.00-120.00; 70-80 LBS. 120.00-130.00.

SHEEP: 30.00-50.00; LIGHT-WEIGHTS TO 67.00.

GOATS: 30 HEAD. FEW LARGE 70.00-90.00; **MEDIUM** 45.00-75.00; **SMALL** 15.00-35.00.

PIGS AND SHOATS: BY THE HEAD, 20-30 LBS. 16.00-21.00; **BY THE LB. GRADED SALE, #1&2 PIGS** 152 HEAD. 12 HEAD 34 LBS. 92.00-103.00; 70 HEAD 45-60 LBS. 95.00-110.00; 17 HEAD 65-75 LBS. 86.00-91.00; 34 HEAD 69-73 LBS. 100.00-103.00; 9 HEAD 138 LBS. 61.00.

New Holland Horses

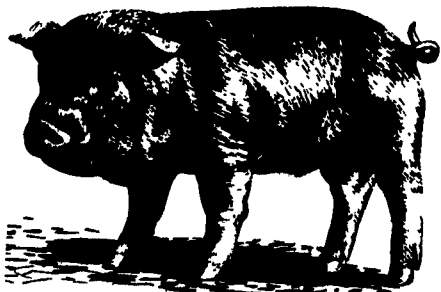
New Holland Sales Stables

New Holland, PA

Monday, January 1, 1997

Report Supplied By Auction

234 HEAD. MARKET LOWER. **PONIES: 135.00-400.00.** **DRIVING** 435.00-910.00. **RIDING** 435.00-910.00. **LARGE PONIES** 450.00-510.00. **COLTS: 140.00-405.00.** **KILLERS, HEAVYWEIGHTS** 635.00-810.00, **LIGHTWEIGHTS** 410.00-590.00. 1 AT 900.00.



Some Markets Not Available Because Of Early Press Farm Show Deadlines

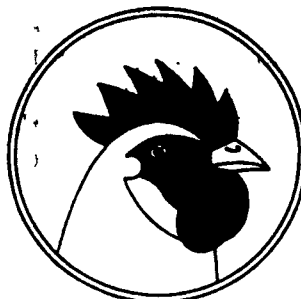
IDEAL LEAF TOBACCO CO.

will be buying Type 609 tobacco in Lancaster County for the 14th consecutive year.

CONTACT JOE IRVING
575-2525 • 575-1044 local
804-223-8101 long distance

RISSEY'S POULTRY INC.

P.O. BOX 52 • LITITZ, PA



Buyers and Haulers of Leghorn, Medium, and Heavy Fowl.

Now using carts for the most efficient means of moving spent fowl.

Over 60 years of prompt payment and dependable service.

Tel. 717-626-5466
FAX 717-627-3599

HOOBER

THREE LOCATIONS
The Saving Place

- C.B. HOOBER & SON, INC. • Intercourse, PA 717-768-8231
- HOOBER EQUIPMENT INC. • Middletown DE 302-378-8555
- C.B. HOOBER & SON, INC. • McAlisterville, PA 717-463-2191

HOOBER HAS UPTIME SERVICE PROGRAMS FOR MOST MAJOR MACHINES ON YOUR FARM AND MONEY-SAVING PARTS SPECIALS TOO!

UPTIME SERVICE

- AXIAL FLOW COMBINE Inspection & Service
- 4-WHEEL DRIVE TRACTORS Inspection & Service
- MAGNUM & MAXXUM TRACTORS Inspection & Service
- BIG SQUARE BALER Inspection & Service
- CYCLO AIR PLANTER Inspection & Service
- WINTER SERVICE SPECIALS

PRE-SEASON PARTS PROGRAM with **Volume Discounts and Special Pre-season Prices**

Call Us today For More Details

LEESPORT FARMERS MARKET

North end of Leesport, PA Turn East off Route 61

"WHERE FRIENDS MEET"

BERKS COUNTY'S ONLY WEEKLY CATTLE & SWINE AUCTION - WEDNESDAY AT 1 P.M.



FARMER'S MARKET Every Wednesday, 9 AM TO 8 PM

Garden Fresh Fruits & Vegetables-Bakery Fresh Cakes, Pies and Buns-Butcher Fresh Meats & Cheese-Sporting Goods-Clothing-Furniture - Jewelry - Used Items & Collectibles.

PHONE: 610-926-1307

BILL WEIST & WOODY WEIST, MGRS.

WE SHIP PARTS DAILY

Via FED. EXP. - UPS - PPSH - BUS - AIR FREIGHT, ETC.

HOURS

Mon.-Fri. 7 AM-5PM; Sat.: 7 AM-Noon



Authorized UPS Station

YOU STAY PUT



Pick Up Your Phone And Place Your Parts Order With Us

CALL US...

It Could Be We Have It